

Product datasheet for **RC209567**

PLA2G4C (NM_003706) Human Tagged ORF Clone

Product data:

Product Type:	Expression Plasmids
Product Name:	PLA2G4C (NM_003706) Human Tagged ORF Clone
Tag:	Myc-DDK
Symbol:	PLA2G4C
Synonyms:	CPLA2-gamma
Mammalian Cell Selection:	Neomycin
Vector:	pCMV6-Entry (PS100001)
E. coli Selection:	Kanamycin (25 ug/mL)



[View online »](#)

ORF Nucleotide Sequence:

>RC209567 ORF sequence
 Red=Cloning site Blue=ORF Green=Tags(s)

TTTTGTAATACGACTCACTATAGGGCGGCCGGGAATTCGTCGACTGGATCCGGTACCGAGGAGATCTGCC
 GCC**CGCATCGCC**

ATGGGAAGCTCTGAAGTTCCATAATTCCTGGGCTCCAGAAAAGAAAAGGCGGCCGTGGAGAGACGAA
 GACTTCATGTGCTGAAAGCTCTGAAGAAGCTAAGGATTGAGGCTGATGAGCCCCAGTTGTTGCTGTGCT
 GGGCTCAGGCGGAGGACTGCGGGCTCACATTGCCTGCCTTGGGGTCTGAGTGAGATGAAAGAACAGGGC
 CTGTTGGATGCCGTCACGTACCTCGCAGGGTCTCTGGATCCACTTGGGCAATATCTTCTCTACACCA
 ATGATGGTGACATGGAAGCTCTCGAGGCTGACCTGAAACATCGATTTACCCGACAGGAGTGGGACTTGGC
 TAAGAGCCTACAGAAAACCATCCAAGCAGCGAGGTCTGAGAATTACTCTGACCGACTTCTGGGCTAC
 ATGTTATCTTAAGCAAACCAGAGAACTGCCGGAGTCTCATTTGTCCAATATGAAGAAGCCCGTGAAG
 AAGGGACTACCTACCGATATTTGCAGCCATTGACAATGACCTGCAACCTTCTGGCAGGAGGCAAG
 AGCACCAGAGACTGGTTCGAGTTCACCCCTCACCACGCTGGCTTCTGCACTGGGGCCCTTTGTTTCC
 ATAACCCACTTCGGAAGCAAATCAAGAAGGGAAGACTGGTCAGAACTCACCTGAGAGAGACTGACTT
 TCCTGAGAGGTTTATGGGGAAGTCTTGGTAACACTGAAGTCATTAGGGAATACATTTTTGACCAGTT
 AAGGAATCTGACCCTGAAAGTTTATGGAGAAGGGCTGTTGCTAATGCTAAAAGCATTGGACACCTTATT
 TTTGCCGATTACTGAGGCTGCAAGAAAGTTCACAAGGGGAACATCTCCCCAGAAGATGAAGGCGGTG
 AGCCTGAACACACTGGCTGACTGAGATGCTCGAGAATTGGACCAGGACTCCCTGGAAAAGCAGGAGCA
 GCCCATGAGGACCCCGAAAGGAAAGGCTCACTCAGTAACCTTGATGGATTTGTGAAGAAAACAGGCATT
 TGCCTTCAAAGTGGGAATGGGGGACCCTCACAACCTTCTGTACAAACCGGTGGCATCCGGGACAAGA
 TAATGACGACCCGGAAGCACCTCCACTGGTGGATGCTGGTTTAGCCATCAACACTCCCTTCCACTCGT
 GCTGCCCCCGACGCGGGAGGTTACCTCATCTCTCTTCGACTTCAGTGCCGGAGATCCTTTCGAGACC
 ATCCGGGCTACACTGACTACTGCCGCCCAAGATCCCTTTCCTCAAGTAGAAGAGGCTGAGCTGG
 ATTTGTGGTCCAAGGCCCGCCAGCTGCTACATCCTGAAAGGAGAACTGGACCAGTGGTATGCATTT
 TCCCCTGTTCAACATAGATGCCTGTGGAGGTGATATTGAGGCATGGAGTGACACATACGACACATTAAG
 CTTGCTGACACCTACTCTAGATGTGGTGGTCTACTCTTGGCATTAGCCAAGAAGAATGTCAGGGAAA
 ACAAGAAGAAGATCCTTAGAGAGTTGATGAACGTGGCCGGGCTCTACTACCCGAAGGATAGTGCCCGAAG
 TTGCTGCTTGCA

ACGCGTACGCGGCCGCTCGAGCAGAAACTCATCTCAGAAGAGGATCTGGCAGCAAATGATATCCTGGATT
 ACAAGGATGACGACGATAAGGTTTAA

Protein Sequence:

>RC209567 protein sequence
 Red=Cloning site Green=Tags(s)

MGSSEVSIIPGLQKEEKAVERRRRLHVLKALKKLRIEADAPVAVLGSGGGLRAHIACLGVLSEMKEQG
 LLDVAVTYLAGVSGSTWAISSLYTNDGDMEALEADLKHRFTRQEWDLAKSLQKTIQAARSENYSLTDFWAY
 MVISKQTRPEPESHLNMMKPVVEEGLPYPIFAAIDNDLQPSWQEARAPETWFEFTPHHAGFSALGAFVS
 ITHFGSKFKKGRQVLRTHPERDLTFLRGLWGSALGNTEVIREYIFDQLRNLTLKGLWRRVANAKSIGHLI
 FARLLRLQESSQGEHPPPEDEGGEPEHTWLEMLNWRTRTSLEKQEPHEDPERKGSLSNLMDFVKKGTGI
 CASKWEGTTHNFLYKHGGIRDKIMSSRKHLHLVDAGLAINTPFPLVLPPTREVHLILSDFDSAGDPFET
 IRATTDYCRRHKIPFPQVEEAELDLWSKAPASCYILKGETGPVVMHFPLFNIDACGGDIEAWSDTYDTFK
 LADTYTLDVVVLLALAKKNVRENKKKILRELMNVAGLYYPKDSARSCLLA

TRTRPLEQKLISEEDLAANDILDYKDDDDKV

Chromatograms:

https://cdn.origene.com/chromatograms/mk6355_e04.zip

Restriction Sites:

Sgfl-Mlul

Cloning Scheme:


ACCN: NM_003706

ORF Size: 1623 bp

OTI Disclaimer: The molecular sequence of this clone aligns with the gene accession number as a point of reference only. However, individual transcript sequences of the same gene can differ through naturally occurring variations (e.g. polymorphisms), each with its own valid existence. This clone is substantially in agreement with the reference, but a complete review of all prevailing variants is recommended prior to use. [More info](#)

OTI Annotation: This clone was engineered to express the complete ORF with an expression tag. Expression varies depending on the nature of the gene.

Components: The ORF clone is ion-exchange column purified and shipped in a 2D barcoded Matrix tube containing 10ug of transfection-ready, dried plasmid DNA (reconstitute with 100 ul of water).

- Reconstitution Method:**
1. Centrifuge at 5,000xg for 5min.
 2. Carefully open the tube and add 100ul of sterile water to dissolve the DNA.
 3. Close the tube and incubate for 10 minutes at room temperature.
 4. Briefly vortex the tube and then do a quick spin (less than 5000xg) to concentrate the liquid at the bottom.
 5. Store the suspended plasmid at -20°C. The DNA is stable for at least one year from date of shipping when stored at -20°C.

RefSeq: [NM_003706.3](#)

RefSeq Size: 2541 bp

RefSeq ORF: 1626 bp

Locus ID: 8605

UniProt ID: [Q9UP65](#)

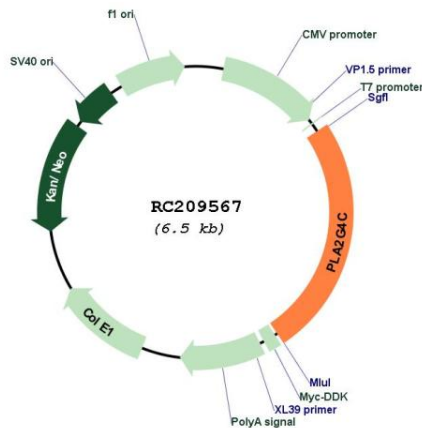
Cytogenetics: 19q13.33

Domains: PLA2_B

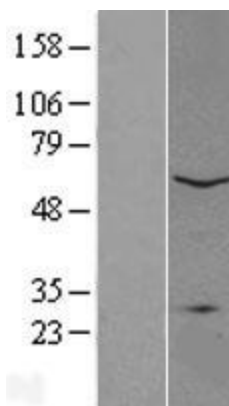
MW: 60.9 kDa

Gene Summary: This gene encodes a protein which is a member of the phospholipase A2 enzyme family which hydrolyzes glycerophospholipids to produce free fatty acids and lysophospholipids, both of which serve as precursors in the production of signaling molecules. The encoded protein has been shown to be a calcium-independent and membrane bound enzyme. Multiple transcript variants encoding different isoforms have been found for this gene. [provided by RefSeq, Apr 2009]

Product images:



Circular map for RC209567



Western blot validation of overexpression lysate (Cat# [LY418486]) using anti-DDK antibody (Cat# [TA50011-100]). Left: Cell lysates from untransfected HEK293T cells; Right: Cell lysates from HEK293T cells transfected with RC209567 using transfection reagent MegaTran 2.0 (Cat# [TT210002]).