

## Product datasheet for **RC209555**

### FGR (NM\_001042729) Human Tagged ORF Clone

#### Product data:

Product Type:	Expression Plasmids
Product Name:	FGR (NM_001042729) Human Tagged ORF Clone
Tag:	Myc-DDK
Symbol:	FGR
Synonyms:	c-fgr; c-src2; p55-Fgr; p55c-fgr; p58-Fgr; p58c-fgr; SRC2
Mammalian Cell Selection:	Neomycin
Vector:	pCMV6-Entry (PS100001)
E. coli Selection:	Kanamycin (25 ug/mL)



[View online »](#)

**ORF Nucleotide Sequence:**

>RC209555 ORF sequence  
 Red=Cloning site Blue=ORF Green=Tags(s)

TTTTGTAATACGACTCACTATAGGGCGGCCGGGAATTCGTCGACTGGATCCGGTACCGAGGAGATCTGCC  
 GCC**CGGATCGCC**

ATGGGCTGTGTCTGCAAGAAATTGGAGCCGGTGGCCACGGCCAAGGAGGATGCTGGCCTGGAAGGGG  
 ACTTCAGAAGCTACGGGGCAGCAGACCACTATGGGCTGACCCCACTAAGGCCCGCCTGCATCCTCATT  
 TGCCACATCCCCAACTACAGCAACTTCTCCTCTCAGGCCATCAACCCTGGCTTCTTATAGTGGCACC  
 ATCAGGGGTGTGTGAGGATTGGGGTGACCCTGTTTATTGCCCTGTACTATGAGGCTCGAACTGAGG  
 ATGACCTCACCTTACCAAGGGCGAGAAGTTCCACATCCTGAACAATACTGAAGGTGACTGGTGGGAGGC  
 TCGGTCTCTCAGCTCCGAAAACTGGCTGCATTCCAGCAACTACGTGGCCCTGTTGACTCAATCCAA  
 GCTGAAGAGTGGTACTTTGAAAGATTGGGAGAAAGGATGCAGAGAGGCAGCTGCTTCCACAGGCAACC  
 CCCAGGGGGCCTTCTCATTTCGGGAAAGCGAGACCACAAAGGTGCCTACTCCCTGTCCATCCGGGACTG  
 GGATCAGACCAGAGGCGATCATGTGAAGCATTACAAGATCCGCAAACTGGACATGGGCGGCTACTACATC  
 ACCACACGGGTTCACTCAACTCGGTGCAGGAGCTGGTGCAGCACTACATGGAGGTGAATGACGGGCTGT  
 GCAACCTGCTCATCGCGCCCTGCACCATCATGAAGCCGACAGCGCTGGGCTGGCCAAGGACGCCTGGGA  
 GATCAGCCGACGCTCCATCACGCTGGAGCGCCGGCTGGGCACCGGCTGCTTCGGGGATGTGTGGCTGGC  
 ACGTGGAAACGGCAGCACTAAGGTGGCGGTGAAGACGCTGAAGCCGGGCACCATGTCCCCGAAGGCCTTCC  
 TGGAGGAGGGCGCAGGTGATGAAGCTGCTGCGGCACGACAAGCTGGTGCAGCTGTACGCCGTGGTGTGCGA  
 GGAGCCCATCTACATCGTGACCGAGTTCATGTGTACGGCAGCTTGTGGATTTTCTCAAGAACCAGAG  
 GGCCAGGATTTGAGGCTGCCCAATTGGTGGACATGGCAGCCAGGTAGCTGAGGGCATGGCCTACATGG  
 AACGCATGAACACATTCACCGCACTGAGGGCAGCAACATCCTGGTTGGGAGCGGCTGGCGTGCAA  
 GATCGCAGACTTTGGCTTGGCGCGTCTCATCAAGGACGATGAGTACAACCCTGCCAAGGTTCAAGTTC  
 CCCATCAAGTGGACAGCCCCAGAAGCTGCCCTCTTTGGCAGATTACCATCAAGTCAAGTCAAGTGTGCTCCT  
 TTGGGATCCTGCTCACTGAGCTCATACCAAGGGCCGAATCCCCTACCCAGGCATGAATAAACGGGAAGT  
 GTTGGAACAGGTGGAGCAGGGCTACCACATGCCGTGCCCTCCAGGCTGCCAGCATCCCTGTACGAGGCC  
 ATGGAACAGACCTGGCGTCTGGACCCGGAGGAGGCCTACCTTCGAGTACCTGCAGTCTTCTGGAGG  
 ACTACTCACCTCCGCTGAACCACAGTACCAGCCCGGGGATCAGACA

**ACGCGT**ACGCGGCCGCTCGAGCAGAACTCATCTCAGAAGAGGATCTGGCAGCAAATGATATCCTGGATT  
 ACAAGGATGACGACGATAAGGTTTAA

**Protein Sequence:**

>RC209555 protein sequence  
 Red=Cloning site Green=Tags(s)

MGCVFCKKLEPVATAKEDAGLEGDFRSYGAADHYGPDPTKARPASSFAHIPNYSNFSQAINPGFLDSGT  
 IRGVSGIGVTLFIALYDYEARTEDDLTFKGEKFHILNTEGDWWEARLSSGKTGCIPSNYVAPVDSIQ  
 AEEWYFGKIGRKAERQLLSPGNPQGAFLIRESETTKGAYLSIRDWDQTRGDHVKHYKIRKLDMGYYI  
 TTRVQFNVSQELVQHMEVNDGLCNLLIAPCTIMKPQTLGLAKDAWEISRSSITLERRLGTGCFGDVWLG  
 TWNGSTKVAVKTLKPGTMSPKAFLEEAQVMKLLRHDKL VQLYAVVSEEPYIVTEFMCHGSLLDFLKNPE  
 GQDLRLPQLVDMAAQVAEGMAYMERMNYIHRDLRAANILVGERLACKIADFLARLIKDDEYNPCQGSKF  
 PIKWTAPEAALFGRFTIKSDVWSFGILL TELITKGRIPYPMNKREVLEQVEQGYHMPGPPGCPASLYEA  
 MEQTWRLDPEERPTFEYLSFLEDYFTSAEPYQPGDQT

**TRTRPLEQKLI**SEEDLAANDILDYKDDDDKV

**Chromatograms:**

[https://cdn.origene.com/chromatograms/mk6167\\_e10.zip](https://cdn.origene.com/chromatograms/mk6167_e10.zip)

**Restriction Sites:**

Sgfl-MluI

**Cloning Scheme:**


**ACCN:** NM\_001042729

**ORF Size:** 1587 bp

**OTI Disclaimer:** The molecular sequence of this clone aligns with the gene accession number as a point of reference only. However, individual transcript sequences of the same gene can differ through naturally occurring variations (e.g. polymorphisms), each with its own valid existence. This clone is substantially in agreement with the reference, but a complete review of all prevailing variants is recommended prior to use. [More info](#)

**OTI Annotation:** This clone was engineered to express the complete ORF with an expression tag. Expression varies depending on the nature of the gene.

**Components:** The ORF clone is ion-exchange column purified and shipped in a 2D barcoded Matrix tube containing 10ug of transfection-ready, dried plasmid DNA (reconstitute with 100 ul of water).

- Reconstitution Method:**
1. Centrifuge at 5,000xg for 5min.
  2. Carefully open the tube and add 100ul of sterile water to dissolve the DNA.
  3. Close the tube and incubate for 10 minutes at room temperature.
  4. Briefly vortex the tube and then do a quick spin (less than 5000xg) to concentrate the liquid at the bottom.
  5. Store the suspended plasmid at -20°C. The DNA is stable for at least one year from date of shipping when stored at -20°C.

**RefSeq:** [NM\\_001042729.2](#)

**RefSeq Size:** 2442 bp

**RefSeq ORF:** 1590 bp

**Locus ID:** 2268

**UniProt ID:** [P09769](#)

**Cytogenetics:** 1p35.3

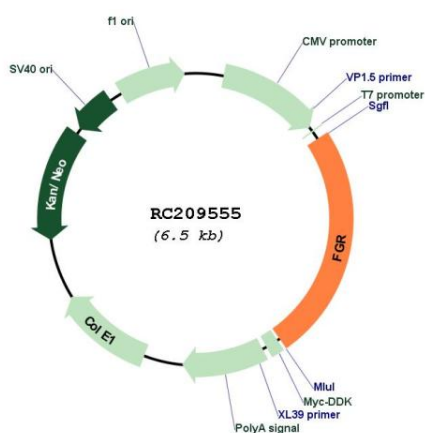
**Protein Families:** Druggable Genome, Protein Kinase

**Protein Pathways:** Chemokine signaling pathway

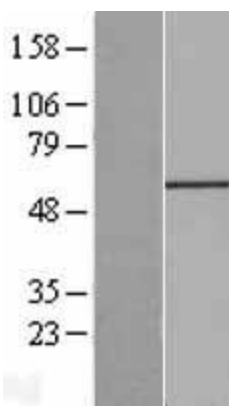
**MW:** 59.5 kDa

**Gene Summary:** This gene is a member of the Src family of protein tyrosine kinases (PTKs). The encoded protein contains N-terminal sites for myristylation and palmitylation, a PTK domain, and SH2 and SH3 domains which are involved in mediating protein-protein interactions with phosphotyrosine-containing and proline-rich motifs, respectively. The protein localizes to plasma membrane ruffles, and functions as a negative regulator of cell migration and adhesion triggered by the beta-2 integrin signal transduction pathway. Infection with Epstein-Barr virus results in the overexpression of this gene. Multiple alternatively spliced variants, encoding the same protein, have been identified. [provided by RefSeq, Jul 2008]

### Product images:



Circular map for RC209555



Western blot validation of overexpression lysate (Cat# [LY420802]) using anti-DDK antibody (Cat# [TA50011-100]). Left: Cell lysates from untransfected HEK293T cells; Right: Cell lysates from HEK293T cells transfected with [RC215016] using transfection reagent MegaTran 2.0 (Cat# [TT210002]).