

Product datasheet for **RC209554**

NAB2 (NM_005967) Human Tagged ORF Clone

Product data:

Product Type:	Expression Plasmids
Product Name:	NAB2 (NM_005967) Human Tagged ORF Clone
Tag:	Myc-DDK
Symbol:	NAB2
Synonyms:	MADER
Mammalian Cell Selection:	Neomycin
Vector:	pCMV6-Entry (PS100001)
E. coli Selection:	Kanamycin (25 ug/mL)



[View online »](#)

ORF Nucleotide Sequence:

>RC209554 ORF sequence
 Red=Cloning site Blue=ORF Green=Tags(s)

TTTTGTAATACGACTCACTATAGGGCGGCCGGAATTCGTCGACTGGATCCGGTACCGAGGAGATCTGCC
 GCC**CGGATCGCC**

ATGCACAGAGCGCCTTCCCCACAGCCGAGCAGCCGCGGGCGGAGGGGACAGCGCCCGCGGACCTGCG
 AGCCAGACTCAAGCCCAGTGCCTGAGCCATGGCACTGCCTCGGACGCTGGGGGAGCTGCAGCTGTACCG
 GGTCTGCAGCGCGCAACCTCCTTTCTACTATGAGACCTTCATCCAGCAGGGAGGGGACGACGTGCAG
 CAGCTGTGTGAGGCGGTGAGGAGGAGTTTCTGGAGATCATGGCACTTGTGGCATGGCCACCAAGCCCC
 TCCATGTCGGCGCCTGCAGAAGGCACTGAGAGAGTGGGCCACCAATCCAGGGCTCTTCAGTCAACCAGT
 GCCTGCTGTTCCCGTCTCCAGCATCCCGCTCTTCAAGATCTCTGAGACTGCGGGTACCCGAAAGGGAGC
 ATGAGCAATGGGCATGGCAGCCAGGGGAAAAGGCAGGCAGTGCCTCGAGTTCAGCCCAAGAGCCCC
 TTGAATTGGAGAGAAGCTATCACCAGTGCCTGGGGACCTGGGGCAGGGGACCCCCGGATCTGGCCAGG
 CCGGAGCACTCCAGAGTCGGACGTTGGGGCAGGAGGAGAAGAGGAGGCTGGCTCGCCCCCTTCTCCCC
 CCTGCAGGGGGAGGAGTCCCTGAGGGGACTGGGGCTGGGGGCTGGCAGCAGGTGGGACTGGGGGTGGTC
 CAGACCGACTGGAGCCAGAGATGGTACGCATGGTGGTGGAAAGTGTGGAGAGGATCTCCGGAGCTTCCC
 AAGGGGGATGCTGGGAGGTACATCCCTGCTAAAGTGAATAAGAAGTGGCAGCGAGCGTTGGGCAC
 ATCTTTGAGATGGATGATAATGACAGCCAGAAGGAAGAGGAGATCCGCAATACAGCATCATCTATGGCC
 GTTTCGACTCTAAGCGCGGGGAGGGCAAGCAGCTCAGCTGCACGAGCTCACCATCAACGAGGCTGCTGC
 CCAGTTCTGCATGAGGGACAACAGCTCTTATTACGGAGAGTGGAGCTCTTCTTTGTCCCGCAAAGTA
 GCCCGAGAGACACCTACTTGTCTCTTGAAGGGCTCCAGGCTTCAACCTGAAGAACTGGGAGGCCCTC
 CACTGAAGAAGCTGAAACAAGAGGTTGGAGAACAGAGTCAACCTGAAATCCAGCAGCCTCCCCAGGCC
 TGAGTCTATGTACCCCATACCGCCCCAGCCTGGAGGAGGACAGCGCCAGCCTGTCTGGGGAGAGTCTG
 GATGGACATTTGACGGCTGTGGGGTGTGTCGAAGGCTGACGCCGCCCTGCTGACCTGCCTCTGGCAT
 TGCCAGCCATGGGCTATGGAGCCGACACATCCTGCAGCAGACTGATGGACGAGGGGCTGCGGCTCGC
 CCGCTCGTCTCCACGACCGCGTGGGCCGCTCAGCCCTGTGTGCTGCGAAGCCACCTCTCGCAGAG
 TTCGAGGAAGGGCTGCTGGACAGATGTCTGCCAGGACCCATCCCGCTGGTGGAGGGTGCAGGA
 GCAGCGTGAAGTGGAGGCTGAGCCAGCCGGCAG

ACGCGTACGCGGCCGCTCGAGCAGAACTCATCTCAGAAGAGGATCTGGCAGCAAATGATATCTGGATT
 ACAAGGATGACGACGATAAGGTTTAA

Protein Sequence:

>RC209554 protein sequence
 Red=Cloning site Green=Tags(s)

MHRAPSPTAEQPPGGDSARRTLQPRLKPSARAMALPRTL GELQLYRVLQRANLLSYETF IQGGDDVQ
 QLCEAGEEEFLEIMALVGMATKPLHVRRLQKALREWATNPGLFSQPVPVPVSSIPLFKISETAGTRKGS
 MSNGHGSPEKAGSARSPKSPLELGEKLSPLPGPGAGDPRIWPGRSTPESDVGAGGEEEAGSPPFSP
 PAGGGVPEGTGAGGLAAGGTGGGPDRLEPEMVRMVVESVERIFRSFPRGDAGEVTSLKLNKKLARSVGH
 IFEMDDNDSQKEEIRKYSIIYGRFDSKRREGKQLSLHEL TINEAAAQFCMRDNTLLRRVELFSLSRQV
 ARESTYLSSLKGSRLHPEELGGPPLKLLKQEVGEQSHPEIQQPPPGPESYVPPYRPSLEEDSASLSGESL
 DGHLQAVGSCPRLTPPPADLPLALPAHGLWSRHILQQLMDEGLRLARLVSHDRVGR LSPCVPAKPLAE
 FEEGLLDRCPPAGPHPALVEGRRSSVKVEAEASRQ

TRTRPLEQKLISEEDLAANDILDYKDDDDKV

Chromatograms:

https://cdn.origene.com/chromatograms/mk6278_a04.zip

Restriction Sites:

Sgfl-MluI

Cloning Scheme:


ACCN: NM_005967

ORF Size: 1575 bp

OTI Disclaimer: Due to the inherent nature of this plasmid, standard methods to replicate additional amounts of DNA in E. coli are highly likely to result in mutations and/or rearrangements. Therefore, OriGene does not guarantee the capability to replicate this plasmid DNA. Additional amounts of DNA can be purchased from OriGene with batch-specific, full-sequence verification at a reduced cost. Please contact our customer care team at custsupport@origene.com or by calling 301.340.3188 option 3 for pricing and delivery.

The molecular sequence of this clone aligns with the gene accession number as a point of reference only. However, individual transcript sequences of the same gene can differ through naturally occurring variations (e.g. polymorphisms), each with its own valid existence. This clone is substantially in agreement with the reference, but a complete review of all prevailing variants is recommended prior to use. [More info](#)

OTI Annotation: This clone was engineered to express the complete ORF with an expression tag. Expression varies depending on the nature of the gene.

Components: The ORF clone is ion-exchange column purified and shipped in a 2D barcoded Matrix tube containing 10ug of transfection-ready, dried plasmid DNA (reconstitute with 100 ul of water).

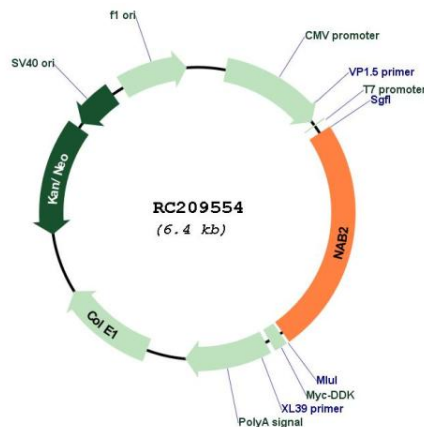
- Reconstitution Method:**
1. Centrifuge at 5,000xg for 5min.
 2. Carefully open the tube and add 100ul of sterile water to dissolve the DNA.
 3. Close the tube and incubate for 10 minutes at room temperature.
 4. Briefly vortex the tube and then do a quick spin (less than 5000xg) to concentrate the liquid at the bottom.
 5. Store the suspended plasmid at -20°C. The DNA is stable for at least one year from date of shipping when stored at -20°C.

RefSeq: [NM_005967.4](#)

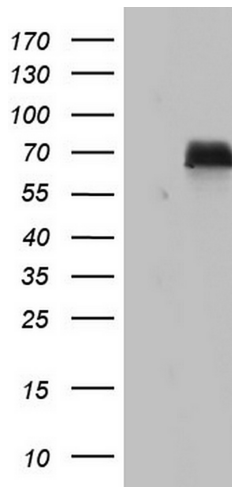
RefSeq Size:	2725 bp
RefSeq ORF:	1578 bp
Locus ID:	4665
UniProt ID:	Q15742
Cytogenetics:	12q13.3
Domains:	NCD1, NCD2
Protein Families:	Transcription Factors
MW:	56.6 kDa

Gene Summary: This gene encodes a member of the family of NGFI-A binding (NAB) proteins, which function in the nucleus to repress transcription induced by some members of the EGR (early growth response) family of transactivators. NAB proteins can homo- or hetero-multimerize with other EGR or NAB proteins through a conserved N-terminal domain, and repress transcription through two partially redundant C-terminal domains. Transcriptional repression by the encoded protein is mediated in part by interactions with the nucleosome remodeling and deacetylase (NuRD) complex. Alternatively spliced transcript variants have been described, but their biological validity has not been determined. [provided by RefSeq, Jul 2008]

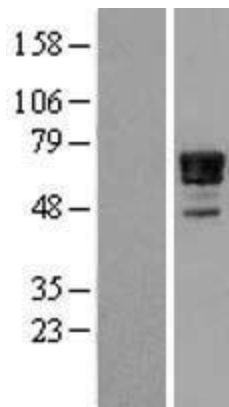
Product images:



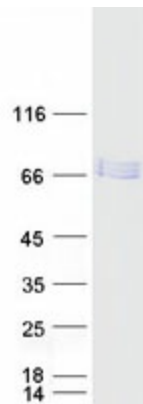
Circular map for RC209554



HEK293T cells were transfected with the pCMV6-ENTRY control (Cat# [PS100001], Left lane) or pCMV6-ENTRY NAB2 (Cat# RC209554, Right lane) cDNA for 48 hrs and lysed. Equivalent amounts of cell lysates (5 ug per lane) were separated by SDS-PAGE and immunoblotted with anti-NAB2(Cat# [TA803848]). Positive lysates [LY416951] (100ug) and [LC416951] (20ug) can be purchased separately from OriGene.



Western blot validation of overexpression lysate (Cat# [LY416951]) using anti-DDK antibody (Cat# [TA50011-100]). Left: Cell lysates from untransfected HEK293T cells; Right: Cell lysates from HEK293T cells transfected with RC209554 using transfection reagent MegaTran 2.0 (Cat# [TT210002]).



Coomassie blue staining of purified NAB2 protein (Cat# [TP309554]). The protein was produced from HEK293T cells transfected with NAB2 cDNA clone (Cat# RC209554) using MegaTran 2.0 (Cat# [TT210002]).