

Product datasheet for RC209547

PMF1 (NM_007221) Human Tagged ORF Clone

Product data:

Product Type: Expression Plasmids
 Product Name: PMF1 (NM_007221) Human Tagged ORF Clone
 Tag: Myc-DDK
 Symbol: PMF1
 Mammalian Cell Selection: Neomycin
 Vector: pCMV6-Entry (PS100001)
 E. coli Selection: Kanamycin (25 ug/mL)
 ORF Nucleotide Sequence: >RC209547 ORF sequence
 Red=Cloning site Blue=ORF Green=Tags(s)

TTTTGTAATACGACTCACTATAGGGCGGCCGGAATTCGTCGACTGGATCCGGTACCGAGGAGATCTGCC
 GCC**CGATCGCC**

ATGGCCGAAGCAAGTAGCGCCAATCTAGGCAGCGGCTGTGAGGAAAAAGGCATGAGGGGTCTCTTCGG
 AATCTGTGCCACCCGGCACTACCATTTTCGAGGGTGAAGCTCCTCGACACCATGGTGGACACTTTTCTTCA
 GAAGCTGGTCGCCCGCCGAGCTACCAGAGATTCAGTACTGCTATAAGTCTTACCAGTTGCAGCCT
 GCGATGACACAGCGAATCTATGACAAGTTATAGCTCAGTGCAGACATCTATCCGGGAGGAAATCTCTG
 ACATCAAAGAGGAGGGGAACCTAGAAGCTGTCTTGAATGCCTGGATAAAAATTGTGGAAGAAGCAAAGT
 CCGCAAAGAGCCAGCCTGGCGCCCCAGCGGGATCCAGAGAAGGATCTGCACAGTGTATAGCACCCCTAC
 TTCCTGCAGAACCGGACACCCTGCGGCCCATGTGCAGAAACAGGAGGCCGAGAACCAGCAGCTGGCAG
 ATGCCGTCTGGCAGGGCGGAGGAGGTGGAGGAGCTGCAGCTACAGGTCCAGGCCAGCAGCAGGCCTG
 GCAGGCTCTACACAGAGAACAGAGGGAGCTGGTTGCTGTGCTGAGGGAGCCTGAG

ACGCGTACGCGGCCGCTCGAGCAGAACTCATCTCAGAAGAGGATCTGGCAGCAATGATATCTGGATT
 ACAAGGATGACGACGATAAGGTTTAA

Protein Sequence: >RC209547 protein sequence
 Red=Cloning site Green=Tags(s)

MAEASSANLGSCEEKRHEGSSSESVPVPGTTISRKLLDTMVDTFQLKVAAGSYQRFTDCYKCFYQLQP
 AMTQRIYDKFIAQLQTSIREEISDIKEEGLNLEAVLNALDKIVEEGKVRKEPAWRPSGIPEKDLHSVIAPY
 FLQQRDLRRHVQKQEAENQQLADAVLAGRRQVEELQLVQVQAWQALHREQLVAVLREPE

TRTRPLEQKLISEEDLAANDILDYKDDDDKV

Chromatograms: https://cdn.origene.com/chromatograms/mk6357_f10.zip



[View online »](#)

Restriction Sites: SgfI-MluI

Cloning Scheme:



ACCN: NM_007221

ORF Size: 615 bp

OTI Disclaimer: The molecular sequence of this clone aligns with the gene accession number as a point of reference only. However, individual transcript sequences of the same gene can differ through naturally occurring variations (e.g. polymorphisms), each with its own valid existence. This clone is substantially in agreement with the reference, but a complete review of all prevailing variants is recommended prior to use. [More info](#)

OTI Annotation: This clone was engineered to express the complete ORF with an expression tag. Expression varies depending on the nature of the gene.

Components: The ORF clone is ion-exchange column purified and shipped in a 2D barcoded Matrix tube containing 10ug of transfection-ready, dried plasmid DNA (reconstitute with 100 ul of water).

Reconstitution Method:

1. Centrifuge at 5,000xg for 5min.
2. Carefully open the tube and add 100ul of sterile water to dissolve the DNA.
3. Close the tube and incubate for 10 minutes at room temperature.
4. Briefly vortex the tube and then do a quick spin (less than 5000xg) to concentrate the liquid at the bottom.
5. Store the suspended plasmid at -20°C. The DNA is stable for at least one year from date of shipping when stored at -20°C.

RefSeq: [NM_007221.3](#), [NP_009152.2](#)

RefSeq Size: 1122 bp

RefSeq ORF: 618 bp

Locus ID: 11243

UniProt ID: [Q6P1K2](#)

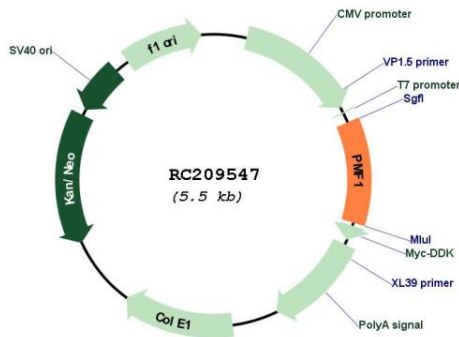
Cytogenetics: 1q22

Protein Families: Stem cell - Pluripotency

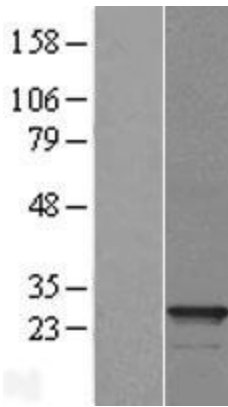
MW: 23.3 kDa

Gene Summary: Part of the MIS12 complex which is required for normal chromosome alignment and segregation and kinetochore formation during mitosis. May act as a cotranscription partner of NFE2L2 involved in regulation of polyamine-induced transcription of SSAT. [UniProtKB/Swiss-Prot Function]

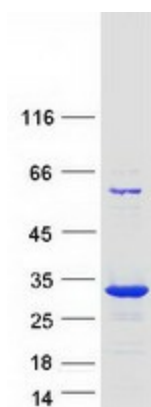
Product images:



Circular map for RC209547



Western blot validation of overexpression lysate (Cat# [LY416111]) using anti-DDK antibody (Cat# [TA50011-100]). Left: Cell lysates from untransfected HEK293T cells; Right: Cell lysates from HEK293T cells transfected with RC209547 using transfection reagent MegaTran 2.0 (Cat# [TT210002]).



Coomassie blue staining of purified PMF1 protein (Cat# [TP309547]). The protein was produced from HEK293T cells transfected with PMF1 cDNA clone (Cat# RC209547) using MegaTran 2.0 (Cat# [TT210002]).