

Product datasheet for **RC209529**

WWP2 (NM_199424) Human Tagged ORF Clone

Product data:

Product Type:	Expression Plasmids
Product Name:	WWP2 (NM_199424) Human Tagged ORF Clone
Tag:	Myc-DDK
Symbol:	WWP2
Synonyms:	AIP2; WWp2-like
Mammalian Cell Selection:	Neomycin
Vector:	pCMV6-Entry (PS100001)
E. coli Selection:	Kanamycin (25 ug/mL)



[View online »](#)

ORF Nucleotide Sequence:

>RC209529 ORF sequence
 Red=Cloning site Blue=ORF Green=Tags(s)

TTTTGTAATACGACTCACTATAGGGCGGCCGGGAATTCGTCGACTGGATCCGGTACCGAGGAGATCTGCC
 GCC**CGCATCGCC**

ATGGCATCTGCCAGCTCTAGCCGGGAGGAGTGGCCCTGCCTTTTGAAGAAGTCTCAGCTCACTTTGAAAG
 TGGTGTCCGCAAAGCCCAAGGTGATAATCGTCAACCTCGAATTAACCTACGTGGAGGTGGCGGTGGA
 TGGACTCCCCAGTGAGACCAAGAAGACTGGGAAGCGCATTGGGAGCTCTGAGCTTCTCTGGAATGAGATC
 ATCATTGTAATGTCACGGCACAGAGTCATTTAGATTTAAAGGTCTGGAGCTGCCATACCTTGAGAAATG
 AACTGCTAGGCACCGCATCTGTCAACCTCTCCAACGTCTTGAAGAACAATGGGGGCAAAATGGAGAACAT
 GCAGCTGACCCTGAACCTGCAGACGGAGAACAAGGCAGCGTTGTCTCAGGCGGAGAGCTGACAATTTTC
 CTGGACGGGCCAACTGTTGATCTGGGAAATGTGCCTAATGGCAGTGCCCTGACAGATGGATCACAGCTGC
 CTTGAGAGACTCCAGTGAACAGCAGTAGCTCCAGAGAACCAGCCAGCCCCAGCACAAACTGCTT
 TGGTGAAGATCCCGGACGCACAGACATTCGGGTGCTTCAGCCAGAACAACCCAGCAACCGGCGAGCAA
 AGCCCCGGTGTCTCGGAGCCGGCACCGCCAGCCCGTCAAGAAGTCAAGGCCACAGTGGCTTGGCCAATGGCA
 CAGTGAATGATGAACCCACAACAGCCACTGATCCCGAAGAACCTTCCGTTGTTGGTGTGACGTCCCCACC
 TGCTGCACCTTGAGTGTGACCCCGAATCCCAACAGCACTTCTCTCCCTGCCACAGCCACACCGGTGAA
 GGAGAGGAACCCAGCACTTCGGGTACACAGCAGCTCCCAGCGGTGCCAGGCCCGGACGCTCTGCCTG
 CTGGATGGGAACAGCGAGAGCTGCCCAACGGACGTGTCTATTATGTTGACCACAATACCAAGACCACCAC
 CTGGGAGCGGCCCTTCTCCAGGCTGGGAAAAACGCACAGATCCCCGAGGCAGGTTTTACTATGTGGAT
 CACAATACTCGGACCACCCTGGCAGCGTCCGACCGGAGTACGTGCGCAACTATGAGCAGTGGCAGT
 CGCAGCGGAATCAGCTCCAGGGGCCATGCAGCACTTCAGCCAAAGATTCTCTACCAGTCTTCGAGTGC
 TTCGACTGACCATGATCCCTGGGCCCCCTCCCTCCTGGCTGGGAGAAAAGACAGGACAATGGACGGGTG
 TATTACGTGAACCATAACACTCGCACGACCCAGTGGGAGGATCCCCGGACCCAGGGGATGATCCAGGAAC
 CAGCTCTGCCCCAGGATGGGAGATGAAATACACCAGCGAGGGGGTGCATACTTTGTGGACCACAATAC
 CCGCACACCACCCTTTAAGGATCCTCGCCCGGGTTTGTAGTGGGGACGAAGCAAGGTTCCCTGGTGTCT
 TATGACCCGAGTTTTCGGTGGAAGTATCACCAAGTCCGTTTCTCTGCCATTCAAATGCCCTACCTAGCC
 ACGTGAAGATCAGCGTTTCCAGGCAGACGCTTTTCAAGATTCTTCCAACAGATCATGAACATGAAACC
 CTATGACCTGCGCCCGGCTCTACATCATCATGCGTGGCGAGGAGGGCCTGGACTATGGGGGCATCGCC
 AGAGAGTGGTTTTCTCTGTCTCACGAGGTGCTCAACCCTATGTATTGTTATTTGAATATGCCGGAA
 AGAACAATTACTGCCTGCAGATCAACCCCGCTCCTCCATCAACCCGGACACCTCACCTACTTTGCTT
 TATAGGCAGATTCATCGCCATGGCGCTGTACCATGGAAAGTTCATCGACACGGGCTTACCCCTCCCTTTC
 TACAAGCGGATGCTCAATAAGAGACCAACCCTGAAAGACCTGGAGTCCATTGACCCTGAGTTCTACAAC
 CCATTGTCTGGATCAAAGAGAACAACCTGGAAGAATGTGGCTGGAGCTGTACTTCATCCAGGACATGGA
 GATACTGGGCAAGGTGACGACCCACGAGCTGAAGGAGGGCGGCGAGAGCATCCGGGTACCGGAGGAGAAC
 AAGGAAGAGTACATCATGCTGCTGACTGACTGGCGTTTCAACCGAGGCGTGAAGAGCAGACCAAGCCT
 TCCTGGATGGCTTCAACGAGGTGGCCCCGCTGGAGTGGCTGCGCTACTTTGACGAGAAAGAGCTGGAGCT
 GATGCTGTGCGGCATGCAGGAGATAGACATGAGCGACTGGCAGAAGAGCACCATCTACCGCACTACACC
 AAGAACAGCAAGCAGATCCAGTGGTTCTGGCAGTGGTGAAGGAGATGGACAACGAGAAGGATCCGGC
 TGCTGCAGTTTGTACCCGTACCTGCCCGCTGCCCGTGGGGGATTTGCCGAACCTCATCGGTAGCAACGG
 ACCACAGAAGTTTTGCATTGACAAAGTTGGCAAGGAAACCTGGCTGCCAGAAGCCACACCTGCTTCAAC
 CGTCTGGATCTTCCACCCTACAAGAGCTACGAACAGCTGAGAGAGAAGCTGCTGTATGCCATTGAGGAGA
 CCGAAGGCTTTGGACAGGAG

ACGCGTACGCGGCCGCTCGAGCAGAAACTCATCTCAGAAGAGGATCTGGCAGCAAATGATATCCTGGATT
 ACAAGGATGACGACGATAAGGTTTAA

Protein Sequence: >RC209529 protein sequence
Red=Cloning site Green=Tags(s)

```
MASASSSRAGVALPFEKSQLTLKVVSAKPKVHNRQPRINSYVEVAVDGLPSETKKTGKRIGSELLWNEI
IILNVTAQSHLDLKVWSCHTLRNELLGTASVNL SNVLKNNGGKMEMNQLTLNLQ TENKGSVVSGGELTIF
LDGPTVDLGNVPNGSAL TDGSQLPSRDSSGTAVAPENRHQPPSTNCFGGRSRTHRHS GASARTTPATGEQ
SPGARSRHRQPVKNSGHSGLANGTVNDEPTTATDPEEPSVVGVTSPPAAPLSVTPNPNTTSLPAPATPAE
GEEPSTSGTQQLPAAAQAPDALPAGWEQREL PNGRVYYVDHNTKTTTWERPLPPGW EKRTDPRGRFYVD
HNTRTTTWRPTAEYVRNYEQWQSQRNQLQGAMQHFSQRFLYQSSSASTDHDPLG LPPGW EKRDNGRV
YYVNHNRTRTTQWEDPRTQGM IQEPALPPGWEMKYTSEGVRYFVDHNTRTTT FKDPRPGFESG TKQGSPGA
YDRSFRWKYHQFRFLCHSNALPSHVKISVSRQTLFEDSFQQIMNMKPYDLRRRLYIIMRGE EGLDYGGIA
REWFFLLSHEVLNPMYCLFEYAGKNNYCLQINPASSINPDHLYFRFIGRFIAMALYHGKFIDTGF TLPF
YKRLMLNRPTLKDLESIDPEFYNSIVWIKENNEEGLLELYFIQDMEILGKVTTH ELKEGGESIRVTEEN
KEEYIMLLTDWRFTRGV EEQTKAFLDGFNEVAPLEWLR YFDEKELEMLCGMQEIDMSD WQKSTIYRHYT
KNSKQIQWFVQVKEMDNEKRIRLLQFVTGT CRLPVGGFAELIGSNGPQKFCIDKVGKETW LPRSHTCFN
RLDLPPYKSYEQLREKLLYAIEETEGFGQE
```

TRTRPLEQKLISEEDLAANDILDYKDDDDKV

Chromatograms: https://cdn.origene.com/chromatograms/mk6524_g07.zip

Restriction Sites: SgfI-MluI

Cloning Scheme:

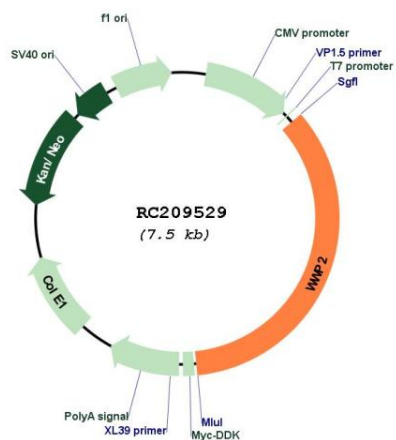
Cloning sites used for ORF Shuttling:



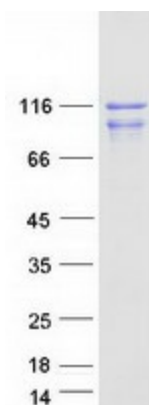
* The last codon before the Stop codon of the ORF

ACCN:	NM_199424
ORF Size:	2613 bp
OTI Disclaimer:	The molecular sequence of this clone aligns with the gene accession number as a point of reference only. However, individual transcript sequences of the same gene can differ through naturally occurring variations (e.g. polymorphisms), each with its own valid existence. This clone is substantially in agreement with the reference, but a complete review of all prevailing variants is recommended prior to use. More info
OTI Annotation:	This clone was engineered to express the complete ORF with an expression tag. Expression varies depending on the nature of the gene.
Components:	The ORF clone is ion-exchange column purified and shipped in a 2D barcoded Matrix tube containing 10ug of transfection-ready, dried plasmid DNA (reconstitute with 100 ul of water).
Reconstitution Method:	<ol style="list-style-type: none">1. Centrifuge at 5,000xg for 5min.2. Carefully open the tube and add 100ul of sterile water to dissolve the DNA.3. Close the tube and incubate for 10 minutes at room temperature.4. Briefly vortex the tube and then do a quick spin (less than 5000xg) to concentrate the liquid at the bottom.5. Store the suspended plasmid at -20°C. The DNA is stable for at least one year from date of shipping when stored at -20°C.
RefSeq Size:	3700 bp
RefSeq ORF:	1296 bp
Locus ID:	11060
UniProt ID:	O00308
Cytogenetics:	16q22.1
Protein Families:	Druggable Genome
Protein Pathways:	Ubiquitin mediated proteolysis
MW:	98.9 kDa
Gene Summary:	This gene encodes a member of the Nedd4 family of E3 ligases, which play an important role in protein ubiquitination. The encoded protein contains four WW domains and may play a role in multiple processes including chondrogenesis and the regulation of oncogenic signaling pathways via interactions with Smad proteins and the tumor suppressor PTEN. Alternatively spliced transcript variants encoding multiple isoforms have been observed for this gene, and a pseudogene of this gene is located on the long arm of chromosome 10. [provided by RefSeq, Jul 2012]

Product images:



Circular map for RC209529



Coomassie blue staining of purified WWP2 protein (Cat# [TP309529]). The protein was produced from HEK293T cells transfected with WWP2 cDNA clone (Cat# RC209529) using MegaTran 2.0 (Cat# [TT210002]).