

## Product datasheet for RC209527

### PRMT6 (NM\_018137) Human Tagged ORF Clone

#### Product data:

Product Type:	Expression Plasmids
Product Name:	PRMT6 (NM_018137) Human Tagged ORF Clone
Tag:	Myc-DDK
Symbol:	PRMT6
Synonyms:	HRMT1L6
Mammalian Cell Selection:	Neomycin
Vector:	pCMV6-Entry (PS100001)
E. coli Selection:	Kanamycin (25 ug/mL)
ORF Nucleotide Sequence:	>RC209527 ORF sequence Red=Cloning site Blue=ORF Green=Tags(s)

TTTTGTAATACGACTCACTATAGGGCGGCCGGAATTCGTCGACTGGATCCGGTACCGAGGAGATCTGCC  
GCC**CGATCGCC**

ATGATCGCGGACCGCTCCGCACCGATGCCTACCGCTGGGTATCCTTCGGAACGGGCAGCACTGCGAG  
GCAAGACGGTACTGGACGTGGGCGGGCACCGCATTCTGAGCATCTTCTGTGCCAGGCCGGGCCCCG  
GCGCGTGTACGCGGTAGAGGCCAGCGCCATCTGGCAACAGGCCCGGGAGGTGGTCCGTTCAACGGGCTG  
GAGGACCGGGTGCACGTCTGCCGGACCAGTGGAGACTGTAGAGTTGCCGGAACAGGTGGATGCCATCG  
TGAGCGAGTGGATGGGCTACGGACTCCTGCACGAGTCCATGCTGAGCTCCGTCTCCACGCGCAACCAA  
GTGGCTGAAGGAGGGCGGTCTTCTCCTGCCGGCCTCCGCCGAGCTTTCATAGCCCCATCAGCGACCAG  
ATGCTGGAATGGCGCTGGGCTTCTGGAGCCAGGTGAAGCAGCACTATGGTGTGGACATGAGCTGCCTGG  
AGGGCTTCGCCACGCGCTGTCTCATGGGCCACTCGGAGATCGTTGTGCAGGGATTGTCCGGCGAGGACGT  
GCTGGCCCCGGCCGAGCGCTTTGCTCAGCTAGAGCTCTCCCGCGCCGGCTTGAGCAGGAGCTGGAGGCC  
GGAGTGGCGGGCGCTTCCGCTGCAGCTGCTATGGCTCGGCGCCCATGCATGGCTTTGCCATCTGGTTCC  
AGGTGACCTTCCCTGGAGGGGAGTCGGAGAAACCCTGGTGTGTCCACCTCGCCTTTTCACCCGGCCAC  
TCACTGGAACAGGCGCTCCTCTACCTGAACGAGCCGGTGCAAGTGGAGCAAGACACGGACGTTTCAGGA  
GAGATCACGCTGCTGCCCTCCCGGACAACCCCGTCGCTGCGGTGCTGCTGCCCTACAAAGTGGGAG  
ACCAGGAGGAGAAGACCAAGACTTTGCCATGGAGGAC

**ACGCGT**ACGCGGCCGCTCGAGCAGAAACTCATCTCAGAAGAGGATCTGGCAGCAAATGATATCCTGGATT  
ACAAGGATGACGACGATAAGGTTTAA



[View online »](#)

**Protein Sequence:** >RC209527 protein sequence  
Red=Cloning site Green=Tags(s)

MIADRVRTDAYRLGILRNWAALRGKTVLDVGAGTGILSIFCAQAGARRVYAVEASAIWQQAREVVRFNGL  
 EDRVHVLPGPVETVELPEQVDAIVSEWMGYLLHESMLSSVLHARTKWLKEGGLLLPASAEFIAPISDQ  
 MLEWRLGFWSQVKQHYGVDMSCLEGFATRCLMGHSEIVVQGLSGEDVLARPQRFQLELSRAGLEQELEA  
 GVGGRFRCSCYGSAPMHGFAIWFQVTFPGGESEKPLVLSTSPFHPATHHWKQALLYLNEPVQVEQDQTDVSG  
 EITLLPSRDNPRLRVLLRYKVGDDQEEKTKDFAMED

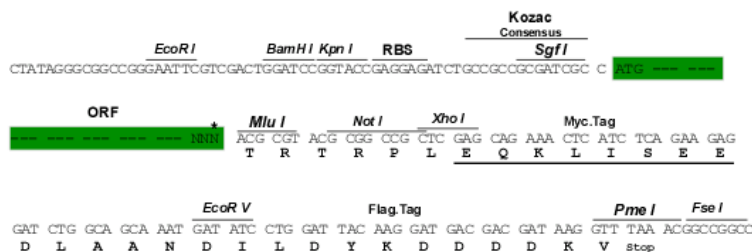
TRTRPLEQKLISEEDLAANDILDYKDDDDKV

**Chromatograms:** [https://cdn.origene.com/chromatograms/mk6268\\_e01.zip](https://cdn.origene.com/chromatograms/mk6268_e01.zip)

**Restriction Sites:** SgfI-MluI

**Cloning Scheme:**

Cloning sites used for ORF Shuttling:



\* The last codon before the Stop codon of the ORF

**ACCN:** NM\_018137

**ORF Size:** 948 bp

**OTI Disclaimer:** The molecular sequence of this clone aligns with the gene accession number as a point of reference only. However, individual transcript sequences of the same gene can differ through naturally occurring variations (e.g. polymorphisms), each with its own valid existence. This clone is substantially in agreement with the reference, but a complete review of all prevailing variants is recommended prior to use. [More info](#)

**OTI Annotation:** This clone was engineered to express the complete ORF with an expression tag. Expression varies depending on the nature of the gene.

**Components:** The ORF clone is ion-exchange column purified and shipped in a 2D barcoded Matrix tube containing 10ug of transfection-ready, dried plasmid DNA (reconstitute with 100 ul of water).

**Reconstitution Method:**

1. Centrifuge at 5,000xg for 5min.
2. Carefully open the tube and add 100ul of sterile water to dissolve the DNA.
3. Close the tube and incubate for 10 minutes at room temperature.
4. Briefly vortex the tube and then do a quick spin (less than 5000xg) to concentrate the liquid at the bottom.
5. Store the suspended plasmid at -20°C. The DNA is stable for at least one year from date of shipping when stored at -20°C.

**Note:** Plasmids are not sterile. For experiments where strict sterility is required, filtration with 0.22um filter is required.

**RefSeq:** [NM\\_018137.1](#), [NP\\_060607.1](#)

**RefSeq Size:** 2665 bp

**RefSeq ORF:** 1128 bp

**Locus ID:** 55170

**UniProt ID:** [Q96LA8](#)

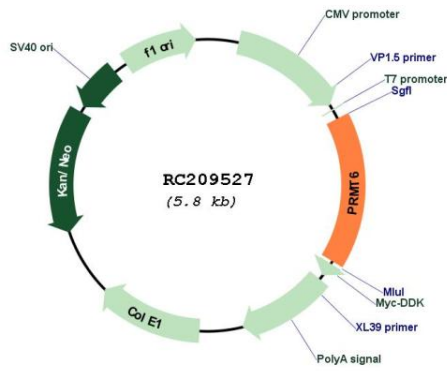
**Cytogenetics:** 1p13.3

**Protein Families:** Druggable Genome

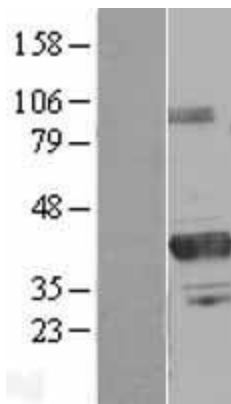
**MW:** 35.2 kDa

**Gene Summary:** The protein encoded by this gene belongs to the arginine N-methyltransferase family, which catalyze the sequential transfer of methyl group from S-adenosyl-L-methionine to the side chain nitrogens of arginine residues within proteins, to form methylated arginine derivatives and S-adenosyl-L-homocysteine. This protein can catalyze both, the formation of omega-N monomethylarginine and asymmetrical dimethylarginine, with a strong preference for the latter. It specifically mediates the asymmetric dimethylation of Arg2 of histone H3, and the methylated form represents a specific tag for epigenetic transcriptional repression. This protein also forms a complex with, and methylates DNA polymerase beta, resulting in stimulation of polymerase activity by enhancing DNA binding and processivity. [provided by RefSeq, Sep 2011]

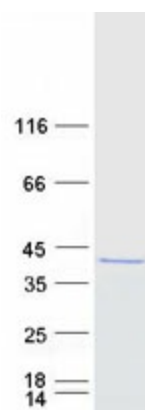
Product images:



Circular map for RC209527



Western blot validation of overexpression lysate (Cat# [LY413290]) using anti-DDK antibody (Cat# [TA50011-100]). Left: Cell lysates from untransfected HEK293T cells; Right: Cell lysates from HEK293T cells transfected with RC209527 using transfection reagent MegaTran 2.0 (Cat# [TT210002]).



Coomassie blue staining of purified PRMT6 protein (Cat# [TP309527]). The protein was produced from HEK293T cells transfected with PRMT6 cDNA clone (Cat# RC209527) using MegaTran 2.0 (Cat# [TT210002]).