

## Product datasheet for **RC209525**

### Septin 11 (SEPT11) (NM\_018243) Human Tagged ORF Clone

#### Product data:

Product Type:	Expression Plasmids
Product Name:	Septin 11 (SEPT11) (NM_018243) Human Tagged ORF Clone
Tag:	Myc-DDK
Symbol:	Septin 11
Synonyms:	SEPT11
Mammalian Cell Selection:	Neomycin
Vector:	pCMV6-Entry (PS100001)
E. coli Selection:	Kanamycin (25 ug/mL)



[View online »](#)

**ORF Nucleotide Sequence:**

>RC209525 ORF sequence  
 Red=Cloning site Blue=ORF Green=Tags(s)

TTTTGTAATACGACTCACTATAGGGCGGCCGGAATTCGTCGACTGGATCCGGTACCGAGGAGATCTGCC  
 GCC**CGGATCGCC**

ATGGCCGTGGCCGTGGGAGACCGTCTAATGAAGAGCTTCGAAACTTGTCTTTGTCTGGCCATGTGGGAT  
 TTGACAGCTCCCTGACCAGCTGGTCAACAAGTCTACTTCTCAAGGATTCTGTTTCAACATCCTTTGTGT  
 TGGTGAGACAGGCATTGGCAAATCCACGTTAATGGACACTTTGTTCAACACCAAATTTGAAAGTGACCCA  
 GCTACTACAATGAACCAGGTGTTTCGGTTAAAAGCCAGAAGTTATGAGCTTCAGGAAAGCAATGTACGGC  
 TGAAGTTAACCATTGTTGACACCGTGGGATTTGGAGACCAGATAAATAAAGATGACAGCTATAAGCCGAT  
 AGTAGAATATATTGATGCCAGTTCGAGGCCTACCTGCAAGAGGAATTGAAGATTAACGTTCTCTCTTC  
 AACTACCATGACACGAGGATCCATGCCTGCCTCTACTTTATTGCCCTACTGGACATTCCTAAAGTCCC  
 TGGATCTGGTACCATGAAAAAGCTGGACAGTAAGGTGAACATCATTCCAATAATTGCAAAAAGCTGACAC  
 CATTGCCAAGAATGAACTGCACAAATTCAGAGTAAGATCATGAGTGAAGTGGTCAAGCAATGGGGTCCAG  
 ATATATCAGTTTCCCACTGATGAAGAAACGGTGGCAGAGATTAACGCAACAATGAGTGTCCATCTCCCAT  
 TTGCAGTGGTTGGCAGCACCGAAGAGGTGAAGATTGGCAACAAGATGGCAAGGCCAGGCAGTACCCCTG  
 GGGTGTGGTGCAGGTTGAGAATGAAAATCATTGCGATTTTGTGAAACTTCGAGAGATGCTGATCCGCGTG  
 AACATGGAGGACTTGCAGAGCAGACTCACACCCGCCACTATGAATTGTACCGACGCTGTAAAGCTTGAAG  
 AGATGGGGTTCAAGGACACTGACCCTGACAGCAAAACCTTCAGTCTTCAGGAGACATATGAAGCAAAAAG  
 GAATGAATTCCTGGGAGAACTGCAGAAGAAAGAAGAAGAAATGAGACAAATGTTTGTATGAGAGTGAAG  
 GAGAAAGAAGCTGAACTTAAGGAGGCAGAGAAAGAGCTTCACGAGAAGTTTGACCTCTAAAGCGGACAC  
 ACCAAGAAGAAAAGAAGAAAGTGAAGACAAGAAGAAGGAGCTTGAGGAGGAGGTGAACAACCTCCAGAA  
 GAAGAAAGCAGCGGCTCAGTTACTACAGTCCCAGGCCAGCAATCTGGGGCCAGCAACCAAGAAAGAC  
 AAGGATAAGAAAATGCAAGCTTCA

**ACGCGT**ACGCGGCCGCTCGAGCAGAACTCATCTCAGAAGAGGATCTGGCAGCAATGATATCCTGGATT  
 ACAAGGATGACGACGATAAGGTTTAA

**Protein Sequence:**

>RC209525 protein sequence  
 Red=Cloning site Green=Tags(s)

MAVAVGRPSNEELRNLSLSGHVGFDSLDPQLVNKSTSQGFNFILCVGETGIGKSTLMDTLFNTKFESDP  
 ATHNEPGVRLKARSYELQESNVRLKLTIVDTVGFQDQINKDDSYKPIVEYIDAQFEAYLQEELKIKRSLF  
 NYHDTRIHACLYFIAPTGHSLKSLDLVTMKKLDSKVNIPIIAKADTIAKNELHKFKSKIMSELVSNVQ  
 IYQFPTDEETVAEINATMSVHLPFVAVGSTEEVKIGNKMAKARQYPWGVVQVENENHCFVKLREMLIRV  
 NMEDLREQTHTRHYELYRRCKLEEMGFKDTDPDSKPFSLQETYEAKRNEFLGELQKKEEMRQMFVMRVK  
 EKEAELKEAEKELHEKFDLLKRTHQEEKKKVEDKKKELEEEVNNFQKKKAAAQLLQSQAAQSGAQQTKKD  
 KDKKNASFT

**TR**TRPLEQKLISEEDLAANDILDYKDDDDKV

**Chromatograms:**

[https://cdn.origene.com/chromatograms/mk6272\\_a12.zip](https://cdn.origene.com/chromatograms/mk6272_a12.zip)

**Restriction Sites:**

SgfI-MluI

**Cloning Scheme:**


**ACCN:** NM\_018243

**ORF Size:** 1287 bp

**OTI Disclaimer:** The molecular sequence of this clone aligns with the gene accession number as a point of reference only. However, individual transcript sequences of the same gene can differ through naturally occurring variations (e.g. polymorphisms), each with its own valid existence. This clone is substantially in agreement with the reference, but a complete review of all prevailing variants is recommended prior to use. [More info](#)

**OTI Annotation:** This clone was engineered to express the complete ORF with an expression tag. Expression varies depending on the nature of the gene.

**Components:** The ORF clone is ion-exchange column purified and shipped in a 2D barcoded Matrix tube containing 10ug of transfection-ready, dried plasmid DNA (reconstitute with 100 ul of water).

**Reconstitution Method:**

1. Centrifuge at 5,000xg for 5min.
2. Carefully open the tube and add 100ul of sterile water to dissolve the DNA.
3. Close the tube and incubate for 10 minutes at room temperature.
4. Briefly vortex the tube and then do a quick spin (less than 5000xg) to concentrate the liquid at the bottom.
5. Store the suspended plasmid at -20°C. The DNA is stable for at least one year from date of shipping when stored at -20°C.

**RefSeq:** [NM\\_018243.4](#)

**RefSeq Size:** 5582 bp

**RefSeq ORF:** 1290 bp

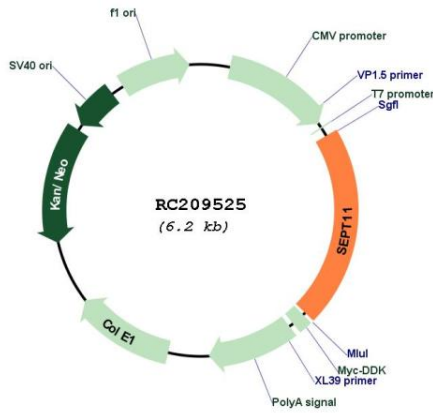
**Locus ID:** 55752

**UniProt ID:** [Q9NVA2](#)

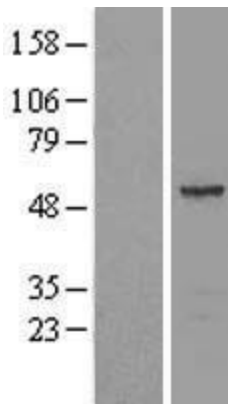
**Cytogenetics:** 4q21.1

**Domains:** GTP\_CDC  
**MW:** 49.4 kDa  
**Gene Summary:** SEPT11 belongs to the conserved septin family of filament-forming cytoskeletal GTPases that are involved in a variety of cellular functions including cytokinesis and vesicle trafficking (Hanai et al., 2004 [PubMed 15196925]; Nagata et al., 2004 [PubMed 15485874]).[supplied by OMIM, Jul 2009]

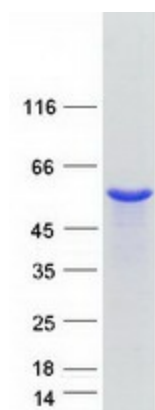
**Product images:**



Circular map for RC209525



Western blot validation of overexpression lysate (Cat# [LY413184]) using anti-DDK antibody (Cat# [TA50011-100]). Left: Cell lysates from untransfected HEK293T cells; Right: Cell lysates from HEK293T cells transfected with RC209525 using transfection reagent MegaTran 2.0 (Cat# [TT210002]).



Coomassie blue staining of purified SEPTIN11 protein (Cat# [TP309525]). The protein was produced from HEK293T cells transfected with SEPTIN11 cDNA clone (Cat# RC209525) using MegaTran 2.0 (Cat# [TT210002]).