

## Product datasheet for RC209519

### ASB6 (NM\_017873) Human Tagged ORF Clone

#### Product data:

Product Type:	Expression Plasmids
Product Name:	ASB6 (NM_017873) Human Tagged ORF Clone
Tag:	Myc-DDK
Symbol:	ASB6
Mammalian Cell Selection:	Neomycin
Vector:	pCMV6-Entry (PS100001)
E. coli Selection:	Kanamycin (25 ug/mL)
ORF Nucleotide Sequence:	>RC209519 ORF sequence Red=Cloning site Blue=ORF Green=Tags(s)

TTTTGTAATACGACTCACTATAGGGCGGCCGGAATTCGTCGACTGGATCCGGTACCGAGGAGATCTGCCGCCCGATCGCC

ATGCCGTTCTGCACGGCTTCCGGAGGATCATCTTCGAGTACCAGCCGCTGGTGGATGCGATTCTGGGCT  
CCCTGGGGATCCAGGACCCCGAGCGGCAGGAGTCTCTGGACCGGCCAGTTATGTCCGACGCGAGGAGAG  
CCGAATCCTTGTCTCACTGAGCTGCTGGAGAGGAAAGCCCACTCTCCCTTTTACCAGGAAGGCGTCAGC  
AACGCCCTGCTCAAGATGGCTGAGCTGGGCTGACGCGGGCGGCCGACGTTCTCTTGCGGCATGGGGCCA  
ATCTCAACTTTGAAGACCCAGTCACTACTACACGGCCTTGACATCGCCGCTCTGCGGAACCCAGCCGCA  
CATGGTGGAGCTGCTGGTGCATCACGGGGCCGACGTTAATCGGAGGGACCGGATCCACGAGAGTAGCCCC  
TTGGACCTGGCCAGCGAGGAGCCTGAGCGCCTGCCTGCCTGCAGCGCCTCCTGGACCTTGAGCTGATG  
TCAATGCCGCTGACAAGCATGGAAAACTGCTCTGCTCCATGCTCTGGCCAGCAGCGACGGGGTGCAGAT  
CCACAATACTGAGAACATTCGTCTTTACTGGAAGGAGGGGACAGCTCAAGGCCACCACCAAAGATGGG  
GACACAGTGTTCACCTGCATCATCTTCTGCTTGGTGGAGACCGTGGGAGGGGACAAAGAGGAGGCCAGA  
TGATCAACCGCTTCTGCTTCCAAGTACACGGCTGCTGCTGGCACACGGGGCCGACCCACGAGTGCCC  
AGCCCAGGAGTCCCTCACCCACATCTGCCTGAAGAGCTTTAAACTGCACTTCCCTCTCCTGCGCTTCCCT  
CTGGAGTCCGGAGCTGCCTACAACCTGCTCCCTGCACGGTGGCTCTGCTGGTCTGGCTTTACATCATCT  
TTGAGAGGCTCTGTTCCACCCAGGCTGCACGGAAGACGAGAGCCATGCGGACCTCCTGCCAAAGCTGA  
GACTGTCTGGATCTCATGGTGACCAACTCTCAGAACTCCAGCTGCCCGAAAATTTCGATATCCACCT  
GTGGGCAGCCTGGCGAAAAGATCCAGGCCCTCCACTTCTCCTTGAGGCAGCTGGAGAGCTATCCCCCGC  
CCCTCAAGCACCTGTGCCGTGTGGCCATCCGGCTCTACCTTACGCGTGGCCTGTGGATGTGAAGGTCAA  
AGCCCTGCCTCTGCCGACAGGCTGAAGTGTACCTCCTTAGCGAGCACAGTGGCTCCGTGGAAGATGAC  
ATC

ACGCGTACGCGGGCGCTCGAGCAGAACTCATCTCAGAAGAGGATCTGGCAGCAAATGATATCCTGGATT  
ACAAGGATGACGACGATAAGGTTTAA



[View online »](#)

**Protein Sequence:** >RC209519 protein sequence  
 Red=Cloning site Green=Tags(s)

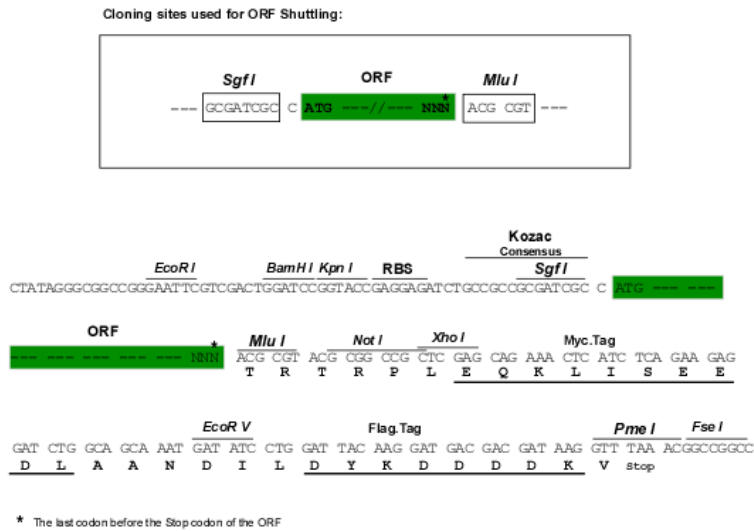
MPFLHGFRRRIIFEYQPLVDAILGSLGIQDPERQESLDRPSYVASEESRILVLTELLERKAHSPFYQEGVS  
 NALLKMAELGLTRAADVLLRHGANLNFEDPVTYYTALHIAVLRNQPDMEVLLVHHGADVNRDRIHESSP  
 LDLASEEPPERLPCLQRLDLGADVNAADKHGKTALLHALASSDGVQIHNTENIRLLLEGGADV KATTKDG  
 DTVFTCIIFLLGETVGGDKEEAQMINRF CFQVTRLLLAHGADPSECPAHESLTHICLKSFKLHFPLLRFL  
 LESGAAYNCSLHGASCWSGFHIIIFERLCSHPGCTEDESADLLRKAETVLDLMTNSQKLQLPENFDIHP  
 VGSLAEKIQUALHFSLRQLESYPPPLKHLCRVAIRLYLQPWPVDVKVKALPLPDRLKWYLLSEHSGSVEDD  
 I

TRTRPLEQKLISEEDLAANDILDYKDDDDKV

**Chromatograms:** [https://cdn.origene.com/chromatograms/mk6355\\_h05.zip](https://cdn.origene.com/chromatograms/mk6355_h05.zip)

**Restriction Sites:** SgfI-MluI

**Cloning Scheme:**



**ACCN:** NM\_017873

**ORF Size:** 1263 bp

**OTI Disclaimer:** The molecular sequence of this clone aligns with the gene accession number as a point of reference only. However, individual transcript sequences of the same gene can differ through naturally occurring variations (e.g. polymorphisms), each with its own valid existence. This clone is substantially in agreement with the reference, but a complete review of all prevailing variants is recommended prior to use. [More info](#)

**OTI Annotation:** This clone was engineered to express the complete ORF with an expression tag. Expression varies depending on the nature of the gene.

**Components:** The ORF clone is ion-exchange column purified and shipped in a 2D barcoded Matrix tube containing 10ug of transfection-ready, dried plasmid DNA (reconstitute with 100 ul of water).

**Reconstitution Method:**

1. Centrifuge at 5,000xg for 5min.
2. Carefully open the tube and add 100ul of sterile water to dissolve the DNA.
3. Close the tube and incubate for 10 minutes at room temperature.
4. Briefly vortex the tube and then do a quick spin (less than 5000xg) to concentrate the liquid at the bottom.
5. Store the suspended plasmid at -20°C. The DNA is stable for at least one year from date of shipping when stored at -20°C.

**RefSeq:** [NM\\_017873.4](#)

**RefSeq Size:** 4657 bp

**RefSeq ORF:** 1266 bp

**Locus ID:** 140459

**UniProt ID:** [Q9NWX5](#)

**Cytogenetics:** 9q34.11

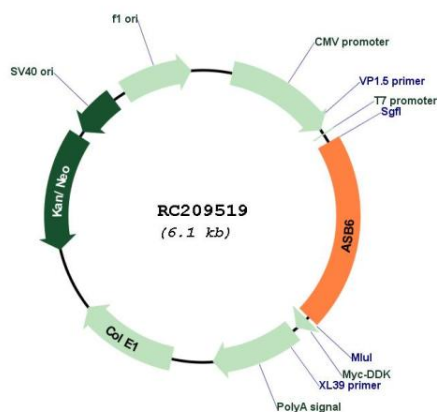
**Domains:** SOCS, ANK

**Protein Families:** Druggable Genome

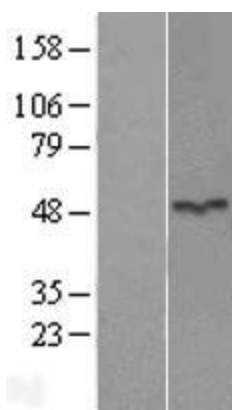
**MW:** 47.1 kDa

**Gene Summary:** The protein encoded by this gene belongs to a family of ankyrin repeat proteins that, along with four other protein families, contain a C-terminal SOCS box motif. Growing evidence suggests that the SOCS box, similar to the F-box, acts as a bridge between specific substrate-binding domains and the more generic proteins that comprise a large family of E3 ubiquitin protein ligases. Alternatively spliced transcript variants have been identified for this gene. [provided by RefSeq, Jan 2011]

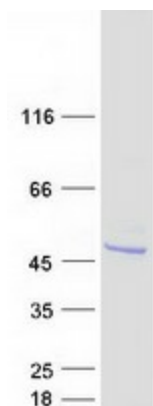
### Product images:



Circular map for RC209519



Western blot validation of overexpression lysate (Cat# [LY413495]) using anti-DDK antibody (Cat# [TA50011-100]). Left: Cell lysates from untransfected HEK293T cells; Right: Cell lysates from HEK293T cells transfected with RC209519 using transfection reagent MegaTran 2.0 (Cat# [TT210002]).



Coomassie blue staining of purified ASB6 protein (Cat# [TP309519]). The protein was produced from HEK293T cells transfected with ASB6 cDNA clone (Cat# RC209519) using MegaTran 2.0 (Cat# [TT210002]).