

Product datasheet for RC209513

CHMP1B (NM_020412) Human Tagged ORF Clone

Product data:

Product Type: Expression Plasmids
Product Name: CHMP1B (NM_020412) Human Tagged ORF Clone
Tag: Myc-DDK
Symbol: CHMP1B
Synonyms: C10orf2; C18-ORF2; C18orf2; CHMP1.5; hVps46-2; Vps46-2; Vps46B
Mammalian Cell Selection: Neomycin
Vector: pCMV6-Entry (PS100001)
E. coli Selection: Kanamycin (25 ug/mL)
ORF Nucleotide Sequence: >RC209513 ORF sequence
 Red=Cloning site Blue=ORF Green=Tags(s)

TTTTGTAATACGACTCACTATAGGGCGGCCGGAATTCGTCGACTGGATCCGGTACCGAGGAGATCTGCC
 GCCCGGATCGCC

ATGTCTAACATGGAGAAACACCTGTTCAACCTGAAGTTCGCGGCCAAAGAACTGAGTAGGAGTGCCAAA
 AATGCGATAAGGAGGAAAAGGCCGAAAAGGCCAAAATTAAGGCCATTCAGAAGGCAACATGGAAGT
 TGCAGGATACACGCCGAAAATGCCATCCGCCAGAAGAACCAGGCGGTGAATTTCTTGAGAATGAGTGCG
 CGAGTCGATGCAGTGGCTGCCAGGGTCCAGACGGCGGTGACGATGGCAAGGTGACCAAGTCGATGGCTG
 GTGTGGTTAAGTCGATGGATGCGACATTGAAGACCATGAATCTGGAGAAGATTTCTGCTTTGATGGACAA
 ATTCGAGCACCAGTTTGGACTCTGGACGTCAGACGCAGCAAAATGGAAGACACGATGAGCAGCAGCAGC
 ACGCTCACCCTCCCGAACAAGTGGATATGCTGCTCCAGGAAATGGCAGATGAGGCGGGCCTCGACC
 TCAACATGGAGCTGCCGAGGGCCAGACCGGCTCCGTGGGCACGAGCGTGGCTTCGGCGGAGCAGGATGA
 ACTGTCTCAGAGACTGGCCCGCCTTCGGGATCAAGTG

ACGCGTACGCGGCCGCTCGAGCAGAACTCATCTCAGAAGAGGATCTGGCAGCAATGATATCCTGGATT
 ACAAGGATGACGACGATAAGGTTTAA

Protein Sequence: >RC209513 protein sequence
 Red=Cloning site Green=Tags(s)

MSNMEKHLFNLKFAAKELSRSAKCDKEEKAIEKAIKKAIQKGNMEVARIHAENAIRQKNQAVNFLRMSA
 RVDAAARVQTAVTMGKVTSMAGVVKSMDATLKTMLNLEKISALMDKFEHQFETLDVQTTQMEDTMSSTT
 TLTTTPQNQVDMLLQEMADEAGLDLNMELPQGQTSVGTGSVASAEQDELSQLRLARLRDQV

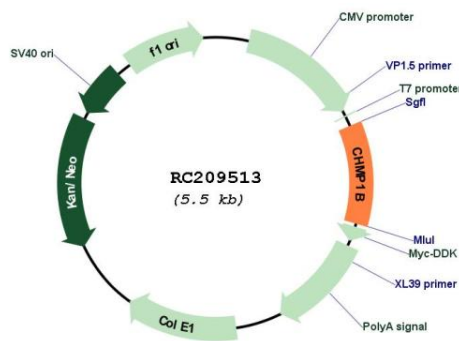
TRTRPLEQKLISEEDLAANDILDYKDDDDKV



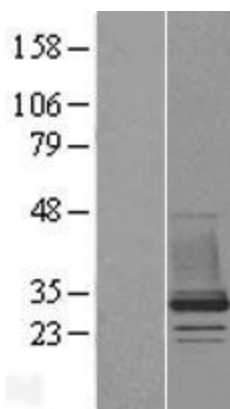
[View online »](#)

UniProt ID:	<u>Q7LBR1</u>
Cytogenetics:	18p11.21
Domains:	DUF279
Protein Families:	Druggable Genome
Protein Pathways:	Endocytosis
MW:	22.1 kDa
Gene Summary:	CHMP1B belongs to the chromatin-modifying protein/charged multivesicular body protein (CHMP) family. These proteins are components of ESCRT-III (endosomal sorting complex required for transport III), a complex involved in degradation of surface receptor proteins and formation of endocytic multivesicular bodies (MVBs). Some CHMPs have both nuclear and cytoplasmic/vesicular distributions, and one such CHMP, CHMP1A (MIM 164010), is required for both MVB formation and regulation of cell cycle progression (Tsang et al., 2006 [PubMed 16730941]).[supplied by OMIM, Mar 2008]

Product images:



Circular map for RC209513



Western blot validation of overexpression lysate (Cat# [LY412493]) using anti-DDK antibody (Cat# [TA50011-100]). Left: Cell lysates from untransfected HEK293T cells; Right: Cell lysates from HEK293T cells transfected with RC209513 using transfection reagent MegaTran 2.0 (Cat# [TT210002]).