

## Product datasheet for **RC209508**

### **TINAGL1 (NM\_022164) Human Tagged ORF Clone**

#### **Product data:**

Product Type:	Expression Plasmids
Product Name:	TINAGL1 (NM_022164) Human Tagged ORF Clone
Tag:	Myc-DDK
Symbol:	TINAGL1
Synonyms:	ARG1; LCN7; LIECG3; TINAGRP
Mammalian Cell Selection:	Neomycin
Vector:	pCMV6-Entry (PS100001)
E. coli Selection:	Kanamycin (25 ug/mL)



[View online »](#)

**ORF Nucleotide Sequence:**

>RC209508 ORF sequence  
 Red=Cloning site Blue=ORF Green=Tags(s)

TTTTGTAATACGACTCACTATAGGGCGGCCGGGAATTCGTCGACTGGATCCGGTACCGAGGAGATCTGCC  
 GCC**GCGATCGCC**

ATGTGGCGATGTCCACTGGGGCTACTGCTGTTGCTGCCGCTGGCTGGCCACTTGGCTCTGGGTGCCCAGC  
 AGGGTCGTGGGCCCGGGAGCTAGCACCGGTCTGCACCTGCGGGGCATCCGGGACGCGGGAGGCCGGTA  
 CTGCCAGGAGCAGGACCTGTGCTGCCGCGGCCGTGCCGACGACTGTGCCCTGCCCTACCTGGGCGCCATC  
 TGTACTGTGACCTTTCTGCAACCGCACGGTCTCCGACTGCTGCCCTGACTTCTGGGACTTCTGCCTCG  
 GCGTGCCACCCCTTTTCCCGCATCCAAGGATGTATGCATGGAGGTCGTATCTATCCAGTCTTGGGAAC  
 GTACTGGACAACGTAAACCGTTCACCTGCCAGGAGAACAGGCAGTGGCAGTGTACCAAGAACCATGC  
 CTGGTGGATCCAGACATGATCAAAGCCATCAACAGGGCAACTATGGCTGGCAGGCTGGGAACCACAGCG  
 CCTTCTGGGGCATGACCCTGGATGAGGGCATTGCTACCGCTGGGCACCATCCGCCATCTTCTCGGT  
 CATGAACATGCATGAAATTTATACAGTGTGAACCCAGGGGAGGTGCTTCCACAGCCTTCGAGGCTCT  
 GAGAAGTGGCCCAACCTGATTATGAGCCTTTCACCAAGGCAACTGTGCAGGCTCTGGGCCTTCTCCA  
 CAGCAGCTGTGGCATCCGATCGTGTCTCAATCCATTCTCTGGGACACATGACGCCTGTCTGTGCCCCCA  
 GAACCTGCTGTCTGTGACACCCACCAGCAGCAGGGCTGCCGCGGTGGGCGTCTCGATGGTGCCTGGTGG  
 TTCCTGCGTCGCGGAGGGGTGGTGTCTGACCACTGCTACCCCTTCTCGGGCCGTGAACGAGACGAGGCTG  
 GCCCTGCGCCCCCTGTATGATGCACAGCCGAGCCATGGGTGGGGCAAGCGCCAGGCCACTGCCCACTG  
 CCCAACAGCTATGTTAATAACAATGACATCTACCAGTCACTCCTGTCTACCGCTCGGCTCCAACGAC  
 AAGGAGATCATGAAGGAGCTGATGGAGAATGGCCCTGTCCAAGCCCTCATGGAGGTGCATGAGGACTTCT  
 TCCTATACAAGGGAGGCATCTACAGCCACAGCCAGTGAAGCCTTGGGAGGCCAGAGATACCGCCGCA  
 TGGGACCACTCAGTCAAGATCACAGGATGGGGAGAGGAGACGCTGCCAGATGGAAGGACGCTCAAATAC  
 TGGACTGCGGCCAACTCCTGGGGCCAGCCTGGGGCGAGAGGGGCCACTTCCGCATCGTGCAGCGGCTCA  
 ATGAGTGCACATCGAGAGCTTCGTGCTGGGCGTCTGGGGCCGCGTGGGCATGGAGGACATGGGTCA  
 C

**ACGCGT**ACGCGGCCGCTCGAGCAGAACTCATCTCAGAAGAGGATCTGGCAGCAAATGATATCCTGGATT  
 ACAAGGATGACGACGATAAGGTTTAA

**Protein Sequence:**

>RC209508 protein sequence  
 Red=Cloning site Green=Tags(s)

MWRCPLGLLLLLPLAGHLALGAQQGRRELAPGLHLRGIIRDAGGRYQEQDLCCRGRADDCALPYLGAI  
 CYCDLFCNRTVSDCCPDFWDFCLGVPPFPPIQGCMHGGRIYPVLGTYWDNCNRCTCQENRQWQCDQEP  
 LVDPDMIKAINQGNYGWQAGNHSAFWGMTLDEGIRYRLGTIRPSSVMMHEIYTVLNPGEVLPATAFEAS  
 EKWPNLIEPLDQGNACGSWAFSTAAVASDRVSIHSLGHMTPVLSQNLSCDTHQQQCGRGRDLGAWW  
 FLRRRGVSDHCYPFSGRERDEAGPAPPCMMHSRAMGRGRQATAHCPNSYVNNNDIYQVTPVYRLGSND  
 KEIMKELMENGVPQALMEVHEDFFLYKGGIYSHTPVSLGRPERYRRHGTHSVKITGWGEETLPDGRTLKY  
 WTAANSWGPWGERGHFRIVRGVNECDIESFVLGVWGRVGMEDMGHH

**TR**TRPLEQKLISEEDLAANDILDYKDDDDKV

**Chromatograms:**

[https://cdn.origene.com/chromatograms/mk6524\\_g08.zip](https://cdn.origene.com/chromatograms/mk6524_g08.zip)

**Restriction Sites:**

Sgfl-MluI

**Cloning Scheme:**


**ACCN:** NM\_022164

**ORF Size:** 1401 bp

**OTI Disclaimer:** The molecular sequence of this clone aligns with the gene accession number as a point of reference only. However, individual transcript sequences of the same gene can differ through naturally occurring variations (e.g. polymorphisms), each with its own valid existence. This clone is substantially in agreement with the reference, but a complete review of all prevailing variants is recommended prior to use. [More info](#)

**OTI Annotation:** This clone was engineered to express the complete ORF with an expression tag. Expression varies depending on the nature of the gene.

**Components:** The ORF clone is ion-exchange column purified and shipped in a 2D barcoded Matrix tube containing 10ug of transfection-ready, dried plasmid DNA (reconstitute with 100 ul of water).

**Reconstitution Method:**

1. Centrifuge at 5,000xg for 5min.
2. Carefully open the tube and add 100ul of sterile water to dissolve the DNA.
3. Close the tube and incubate for 10 minutes at room temperature.
4. Briefly vortex the tube and then do a quick spin (less than 5000xg) to concentrate the liquid at the bottom.
5. Store the suspended plasmid at -20°C. The DNA is stable for at least one year from date of shipping when stored at -20°C.

**RefSeq:** [NM\\_022164.3](#)

**RefSeq Size:** 2252 bp

**RefSeq ORF:** 1404 bp

**Locus ID:** 64129

**UniProt ID:** [Q9GZM7](#)

**Cytogenetics:** 1p35.2

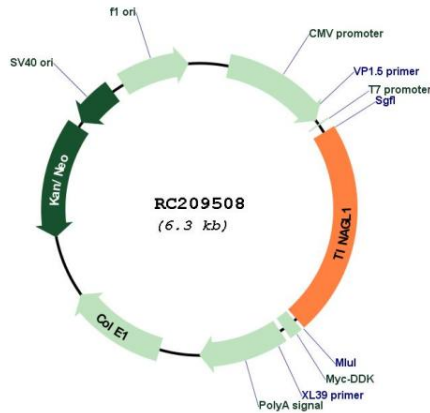
**Domains:** Pept\_C1

**Protein Families:** Druggable Genome, Protease, Secreted Protein

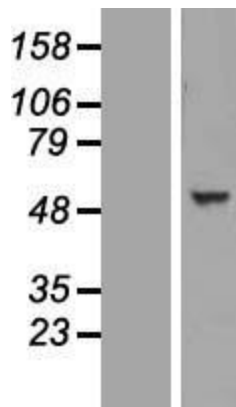
**MW:** 52.4 kDa

**Gene Summary:** The protein encoded by this gene is similar in sequence to tubulointerstitial nephritis antigen, a secreted glycoprotein that is recognized by antibodies in some types of immune-related tubulointerstitial nephritis. Three transcript variants encoding different isoforms have been found for this gene. [provided by RefSeq, Feb 2011]

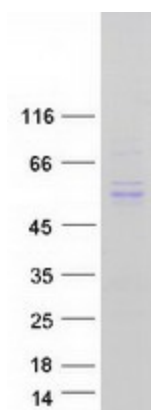
**Product images:**



Circular map for RC209508



Western blot validation of overexpression lysate (Cat# [LY411719]) using anti-DDK antibody (Cat# [TA50011-100]). Left: Cell lysates from untransfected HEK293T cells; Right: Cell lysates from HEK293T cells transfected with RC209508 using transfection reagent MegaTran 2.0 (Cat# [TT210002]).



Coomassie blue staining of purified TINAGL1 protein (Cat# [TP309508]). The protein was produced from HEK293T cells transfected with TINAGL1 cDNA clone (Cat# RC209508) using MegaTran 2.0 (Cat# [TT210002]).