

Product datasheet for **RC209501**

PLBD1 (NM_024829) Human Tagged ORF Clone

Product data:

Product Type:	Expression Plasmids
Product Name:	PLBD1 (NM_024829) Human Tagged ORF Clone
Tag:	Myc-DDK
Symbol:	PLBD1
Mammalian Cell Selection:	Neomycin
Vector:	pCMV6-Entry (PS100001)
E. coli Selection:	Kanamycin (25 ug/mL)



[View online »](#)

ORF Nucleotide Sequence:

>RC209501 ORF sequence
 Red=Cloning site Blue=ORF Green=Tags(s)

TTTTGTAATACGACTCACTATAGGGCGGCCGGGAATTCGTCGACTGGATCCGGTACCGAGGAGATCTGCC
 GCC**CGGATCGCC**

ATGACCCGCGCGGTCCGGGCGGGCCCGGGGCTGCCACAGCCCGCCGCTTCTGCTGCTGCTGCTGC
 TGCCGCTGTTGTTAGTCACCGCGGAGCCGCCGAAACCTGCAGGAGTCTACTATGCAACTGCATACTGGAT
 GCCTGCTGAAAAGACAGTACAAGTCAAAAATGTATGGACAAGAATGGGACGCCTATGGCTTTTACAAT
 AACTCTGTGAAAACCACAGGCTGGGCATCCTGGAGATCAGAGCTGGCTATGGCTCTCAAACCTGAGCA
 ATGAGATCATCATGTTTGTGGCTGGCTTTTGGAGGGTTACCTCACTGCCCCACACATGAATGACCACTA
 CACAAACCTCTACCCACAGCTGATCACGAAACCTCCATCATGGATAAAGTGCAGGATTTTATGGAGAAG
 CAAGATAAGTGGACCCGAAAAATCAAGAATACAAGACTGATTCATTTTGGAGACATACAGGCTATG
 TGATGGCACAAAATAGATGGCCTCTATGTAGGAGCAAAGAAGGGCTATATTAGAAGGGACAAAGCCAAT
 GACCCTGTTCCAGATTCAGTTCCTGAATAGTGTGGAGATCTATTGGATCTGATTCCTCACTCTCTCCC
 ACAAAAAACGGCAGCCTAAAGGTTTTAAGAGATGGGACATGGGACATTGCTCCGCTCTTATCAAGGTTT
 TTCTGGATTTGAGAACATCCTTTTTGCTCACTCAAGCTGGTACACGTATGCAGCCATGCTCAGGATATA
 TAAACTGGGACTTCAACATCATAGATAAAGATACCAGCAGTAGTCGCCTCTCTTTTACAGAGTTACCCA
 GGGTTTTTGGAGTCTCTGGATGATTTTTACATTCTTAGCAGTGGATTGATATTGCTGCAGACCACAAACA
 GTGTGTTAATAAAACCTGCTAAAGCAGGTAATACCCGAGACTCTCTGTCTGGCAAAGAGTCCGCTGT
 GGCCAATATGATGGCAGATAGTGGCAAGAGGTGGCAGACATCTTTCAAATACAACCTGGCACCTAT
 ACAAATCAATACATGGTCTGGACCTGAAGAAAGTAAAGCTGAACCACAGTCTTGACAAAGGCACCTGT
 ACATTGTGGAGCAAATTCCTACATATGTAGAATTTCTGAACAACTGATGTTCTACGGAAGGATATTG
 GCCTCTACAATGTTCCCTTCCATGAAAAATCTACAACCTGGAGTGGCTATCCACTGTTAGTTTCAAGAAG
 CTGGGCTTGGACTACTCTTATGATTTAGCTCCACGAGCCAAAATTTCCGGCGTGACCAAGGAAAAGTGA
 CTGATACGGCATCCATGAAATATATCATGCGATACAACAATTATAAGAAGGATCCTTACAGTAGAGGTGA
 CCCCTGTAATACCATCTGCTGCCGTGAGGACCTGAACTCACCTAACCCAAGTCTGGAGGTTGTTATGAC
 ACAAGGTGGCAGATATCTACCTAGCATCTCAGTACACATCCTATGCCATAAGTGGTCCCACAGTACAAG
 GTGGCCTCCCTGTTTTTCGCTGGGACCGTTTCAACAAACTCTACATCAGGGCATGGCAGAGGTCTACAA
 CTTTGATTTTATTACCATGAAACCAATTTTGAACCTTGATATAAAA

ACGCGTACGCGGCCGCTCGAGCAGAAACTCATCTCAGAAGAGGATCTGGCAGCAAATGATATCCTGGATT
 ACAAGGATGACGACGATAAGGTTTAA

Protein Sequence:

>RC209501 protein sequence
 Red=Cloning site Green=Tags(s)

MTRGGPGGRPGLPQPPLLLLLLLLPLLLVTAEPPKPAVVYATAYWMPAEKTVQVKNVMDKNGDAYGFYN
 NSVKTTGWGILEIRAGYGSQTL SNEIIMFVAGFLEGYLTAPHMNDHYTNLYPQLITKPSIMDKVQDFMEK
 QDKWTRKNIKEYKTD SFRHTGYVMAQIDGLYVGAKKRAILEGKPMTLFQIQFLNSVGDLLDLIPSLSP
 TKNGSLKVFWRWDMGHCSALIKVLPGFENILFAHSSWYTYAAMLRIYKHWFNIIIDKDTSSSRLSFSSYP
 GFLESLDDFYILSSGLILLQTTNSVFNKTLKQVIPETLLSWQRVRVANMMADSGKRWADIFSKYNSGT
 NNQYMLDLKKVVLNHSLDKGLYIVEQIPTVEYSEQTDVLRKGYWPSYNVPPFHEKIYNWSGYPLLVQK
 LGLDYSYDLAPRAKIFRRDQGVTD TASMKYIMRYNNYKDPYSRGPDCNTICREDLNSPNSPGGCYD
 TKVADIYLASQYTSYASISGPTVQGLPVFRWDRFNKTLHQGMAEVYNFDFITMKPILKLDIK

TRTRPLEQKLISEEDLAANDILDYKDDDDKV

Chromatograms:

https://cdn.origene.com/chromatograms/mk6354_f10.zip

Restriction Sites:

Sgfl-Mlul

Cloning Scheme:


ACCN: NM_024829

ORF Size: 1941 bp

OTI Disclaimer: The molecular sequence of this clone aligns with the gene accession number as a point of reference only. However, individual transcript sequences of the same gene can differ through naturally occurring variations (e.g. polymorphisms), each with its own valid existence. This clone is substantially in agreement with the reference, but a complete review of all prevailing variants is recommended prior to use. [More info](#)

OTI Annotation: This clone was engineered to express the complete ORF with an expression tag. Expression varies depending on the nature of the gene.

Components: The ORF clone is ion-exchange column purified and shipped in a 2D barcoded Matrix tube containing 10ug of transfection-ready, dried plasmid DNA (reconstitute with 100 ul of water).

- Reconstitution Method:**
1. Centrifuge at 5,000xg for 5min.
 2. Carefully open the tube and add 100ul of sterile water to dissolve the DNA.
 3. Close the tube and incubate for 10 minutes at room temperature.
 4. Briefly vortex the tube and then do a quick spin (less than 5000xg) to concentrate the liquid at the bottom.
 5. Store the suspended plasmid at -20°C. The DNA is stable for at least one year from date of shipping when stored at -20°C.

RefSeq: [NM_024829.3](#)

RefSeq Size: 1951 bp

RefSeq ORF: 1662 bp

Locus ID: 79887

UniProt ID: [Q6P4A8](#)

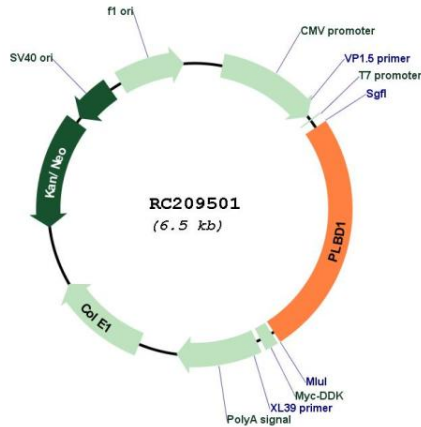
Cytogenetics: 12p13.1

Domains: Laminin_A

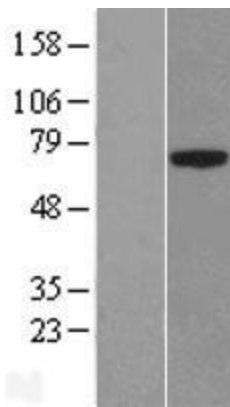
MW: 63.1 kDa

Gene Summary: In view of the small size of the putative binding pocket, it has been proposed that it may act as an amidase or a peptidase (By similarity). Exhibits a weak phospholipase activity, acting on various phospholipids, including phosphatidylcholine, phosphatidylinositol, phosphatidylethanolamine and lysophospholipids.[UniProtKB/Swiss-Prot Function]

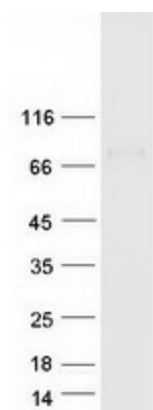
Product images:



Circular map for RC209501



Western blot validation of overexpression lysate (Cat# [LY410947]) using anti-DDK antibody (Cat# [TA50011-100]). Left: Cell lysates from untransfected HEK293T cells; Right: Cell lysates from HEK293T cells transfected with RC209501 using transfection reagent MegaTran 2.0 (Cat# [TT210002]).



Coomassie blue staining of purified PLBD1 protein (Cat# [TP309501]). The protein was produced from HEK293T cells transfected with PLBD1 cDNA clone (Cat# RC209501) using MegaTran 2.0 (Cat# [TT210002]).