

Product datasheet for **RC209499**

ARMC9 (NM_025139) Human Tagged ORF Clone

Product data:

Product Type:	Expression Plasmids
Product Name:	ARMC9 (NM_025139) Human Tagged ORF Clone
Tag:	Myc-DDK
Symbol:	ARMC9
Synonyms:	ARM; JBTS30; KU-MEL-1; NS21
Mammalian Cell Selection:	Neomycin
Vector:	pCMV6-Entry (PS100001)
E. coli Selection:	Kanamycin (25 ug/mL)



[View online »](#)

ORF Nucleotide
Sequence:

>RC209499 ORF sequence
Red=Cloning site Blue=ORF Green=Tags(s)

TTTTGTAATACGACTCACTATAGGGCGGCCGGGAATTCGTCGACTGGATCCGGTACCGAGGAGATCTGCC
GCCGCGATCGCC

ATGGGGGACATTCTGGCTCATGAATCTGAATTACTTGGACTAGTGAAGAGTATTTAGATTTTGGCTGAAT
TTGAAGACACCTTGAAAACATTTTCAAAAAGAAATGCAAAATAAAAAGGAAAACCACTGTGAAAACAGTAGG
CGGATCTTTTCAGAGACTCCAATCATTGACAATTCAGAAGGATCTTGTGCTGCATTTGACAACGGAGAC
CAGAAGGTGTTCTTCGATCTGTGGGAGGAGCACATTTCAAGTTCCATCCGAGATGGGGACTCCTTTGCC
AGAAGCTGGAATCTATCTCCACATCCATTTTCCATCTATTTTTGAAGTACTCTGTGGGGAGACCGGA
CAAAGAGGAGCTGGATGAAAAGATTTCTACTTCAAAACCTACCTGGAGACCAAAGGGGCAGCCTTGAGC
CAGACCACAGAGTTTCTCCTTTCTATGCCCTTCTTTTGTCCCAACCTATGGTGCACCCCTCATTTA
AAGAACTCTCCAGGATTCCTGGACTCCAGAGTTAAAGTTGAAGTTGAAAAGTTTCTAGCTTTAATATC
TAAAGCCAGCAACACGCCAAAGCTTTTAAACAATATATAAGGAGAATGGACAAAGTAACAAAGAAATCTTG
CAGCAGCTCCACCAGCAGCTGGTTGAAGCTGAAGTAGGTGAGTACATACCTCAAACGGTACAATAAGA
TCCAGGCCGACTACCACAATCTCATTGGAGTCACAGCAGAGCTGGTGGATTCTCTAGAGGCCACAGTCAG
CGGCAAGATGATCACCCCTGAGTACCTCCAGAGCGTCTGTGTCCGCTGTTGAGTAAACAGATGCGGCAG
AGCCTGGCGCATAGTGTGGACTTCACGAGGCTGGGACGGCATCCACCATGTTACGAGCCTCCTTGGCAC
CCGTGAAATTGAAGGATGCCATTACTGCCCTCCTTGGATTATGAGAACTGAAGAAGGATTTGATTTT
GGGGAGTGACCGCTTGAAGCCTTCTTGTGACGGCTCTGCGCTGGCGCTTGACCACATCCCATCCTGGA
GAGCAGAGGGAGACCGTCTGCAAGCCTACATCAGCAATGACCTCTTGGACTGTTATAGCCACAACCAGA
GGAGTGTGCTTCAGTTGCTGCACTCCACGAGCGACGTGGTGGCAGTACATGGCCAGGCTCATCAATGC
TTTTGCGTCACTGGCAGAAGGTCGCTCTACCTTGCCCAACACAAAGGTGCTGCAGATGCTGGAGGGA
AGGCTGAAGGAGGAGACAAGGATATCATCACCAGGGAGAATGTTCTTGGGGCCCTGCAGAAGTTAGTC
TCAGGCGCCCGCTGCAGACAGCGATGATTCAAGACGGCCTCATCTTCTGGCTGGTTGATGTTCTGAAGGA
CCCTGACTGCCTGTCTGACTACACGCTGGAGTACTCGGTGGCTTTGCTCATGAACCTCTGCCTCCGCAGC
ACAGGGAAGAACATGTGTCCAAGGTGGCAGGCCCTCGTGCTCAAAGTCTTTCCGATCTTCTTGGCCATG
AAAACCATGAGATACAGCCGTATGTGAATGGAGCTCTGTACAGCATCCTTTCTGTTCCATCCATTCGTGA
GGAAGCAAGGCAATGGGAATGGAAGACATCCTACGCTGCTTCAAAAGAAGGCAATGCTGAAATGATC
CGCCAGATAGAATTCATCATCAAGCAGTAAATCCGAAGAGCTACCAGATGGTGTCTTGAATCTGATG
ATGATGAAGATGAAGATGATGAAGAGGACCATGACATCATGGAAGCCGATCTGGACAAAGACGAACTGAT
CCAGCCCCAGCTCGGAGAACTCTCAGGAGAGAAGCTTCTGACCACGGAGTACCTGGGGATCATGACCAAC
ACGGGGAAGACAAGGCGGAAGGGCTGGCTAATGTGCAGTGGAGCGGGATGAGCCCTGCAAAGGCCCG
TCACCCCGCGGCCACAGAAACGGGTACCCAGTG

ACGCGTACGCGGCCGCTCGAGCAGAACTCATCTCAGAAGAGGATCTGGCAGCAATGATATCCTGGATT
ACAAGGATGACGACGATAAGGTTTAA

Protein Sequence: >RC209499 protein sequence
 Red=Cloning site Green=Tags(s)

```

MGDILAHESSELLGLVKEYLDFAEFEDTLKTFKSKECKIKGKPLCKTVGGSFRRDSSKSLTIQKDLVAAFNGD
QKVFFDLWEEHISSSIRDGDSFAQKLEFYLHIHFAYFLKYSVGRPDKEELDEKISYFKTYLETKGAALS
QTTEFLPFYALPFVNPMPVHPSFKELFQDSWTPPELKLKLEKFLALISKASNTPKLLTIYKENGQSNKEIL
QQLHQQLVEAERRSVTYLKRYNKIQADYHNLIGVTAELVDSLEATVSGKMITPEYLQSVCVRLF SNQMRQ
SLAHSVDFTRPGTASTMLRASLAPVKLKDVPLLPSLDYEKLLKDLILGSDRLKAFLLQALRWRLTTSHPG
EQRETVLQAYISNDLLDCYSHNQSVLQLLHSTSDVVRQYMARLINAFASLAEGRLYLAQNTKVLQMLEG
RLKEEDKDIITRENVLQALQKFSRRRLQTAMIQDGLIFWLVDVLKDPDCLSDYTLSEYVALLMNLCLRS
TGKNMCAKAVAGLVKVLSDLLGHENHEIQPYVNGALYSILSVPSIREEARAMGMEDILRCF IKEGNAEMI
RQIEFIKQLNSEELPDGVLESDDDEDEDEEDHDIMEADLDKDELIQPQLGELSGEKLLTTEYLGIMTN
TGKTRRGLANVQWSGDEPLQRPVTPGGHRNGYPV
  
```

TRTRPLEQKLISEEDLAANDILDYKDDDDKV

Chromatograms: https://cdn.origene.com/chromatograms/mk6531_e05.zip

Restriction Sites: SgfI-MluI

Cloning Scheme:



ACCN: NM_025139

ORF Size: 1995 bp

OTI Disclaimer: The molecular sequence of this clone aligns with the gene accession number as a point of reference only. However, individual transcript sequences of the same gene can differ through naturally occurring variations (e.g. polymorphisms), each with its own valid existence. This clone is substantially in agreement with the reference, but a complete review of all prevailing variants is recommended prior to use. [More info](#)

OTI Annotation: This clone was engineered to express the complete ORF with an expression tag. Expression varies depending on the nature of the gene.

Components: The ORF clone is ion-exchange column purified and shipped in a 2D barcoded Matrix tube containing 10ug of transfection-ready, dried plasmid DNA (reconstitute with 100 ul of water).

Reconstitution Method:

1. Centrifuge at 5,000xg for 5min.
2. Carefully open the tube and add 100ul of sterile water to dissolve the DNA.
3. Close the tube and incubate for 10 minutes at room temperature.
4. Briefly vortex the tube and then do a quick spin (less than 5000xg) to concentrate the liquid at the bottom.
5. Store the suspended plasmid at -20°C. The DNA is stable for at least one year from date of shipping when stored at -20°C.

RefSeq: [NM_025139.6](#)

RefSeq Size: 2317 bp

RefSeq ORF: 1998 bp

Locus ID: 80210

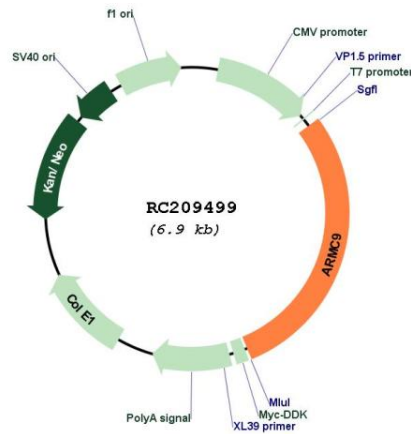
UniProt ID: [Q7Z3E5](#)

Cytogenetics: 2q37.1

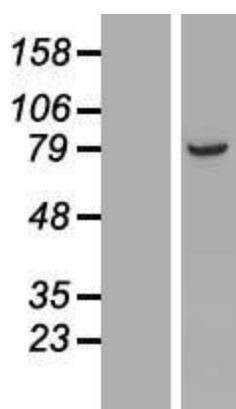
MW: 75.6 kDa

Gene Summary: Required for ciliogenesis.[UniProtKB/Swiss-Prot Function]

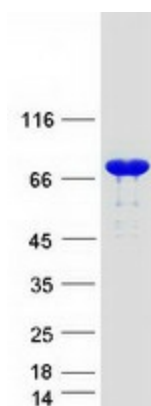
Product images:



Circular map for RC209499



Western blot validation of overexpression lysate (Cat# [LY410879]) using anti-DDK antibody (Cat# [TA50011-100]). Left: Cell lysates from untransfected HEK293T cells; Right: Cell lysates from HEK293T cells transfected with RC209499 using transfection reagent MegaTran 2.0 (Cat# [TT210002]).



Coomassie blue staining of purified ARMC9 protein (Cat# [TP309499]). The protein was produced from HEK293T cells transfected with ARMC9 cDNA clone (Cat# RC209499) using MegaTran 2.0 (Cat# [TT210002]).