

Product datasheet for **RC209496**

LMAN2L (NM_030805) Human Tagged ORF Clone

Product data:

Product Type:	Expression Plasmids
Product Name:	LMAN2L (NM_030805) Human Tagged ORF Clone
Tag:	Myc-DDK
Symbol:	LMAN2L
Synonyms:	MRT52; VIPL
Mammalian Cell Selection:	Neomycin
Vector:	pCMV6-Entry (PS100001)
E. coli Selection:	Kanamycin (25 ug/mL)
ORF Nucleotide Sequence:	>RC209496 ORF sequence Red=Cloning site Blue=ORF Green=Tags(s)

TTTTGTAATACGACTCACTATAGGGCGGCCGGAATTCGTCGACTGGATCCGGTACCGAGGAGATCTGCC
GCC**CGATCGCC**

ATGGCGGCGACTCTGGGACCCCTTGGGTCGTGGCAGCAGTGGCGGCGATGTTTGTGGCTCGGGATGGGT
CCAGGATGTTACTCCTTCTTTTGGGGTCTGGGCAGGGCCACAGCAAGTCGGGGCGGGTCAAAC
GTTGAGTACTTGAACGGGAGCACTCGCTGTCGAAGCCCTACCAGGGTGTGGGCACAGGCAATTCCTCA
CTGTGGAATCTGATGGGCAATGCCATGGTATGACCCAGTATATCCGCCTTACCCAGATATGCAAAGTA
AACAGGGTGCCTTGTGGAACCGGTGCCATGTTTCCTGAGAGACTGGGAGTTGCAGGTGCACTTCAAAT
CCATGGACAAGGAAAGAAGAATCTGCATGGGGATGGCTTGGCAATCTGGTACACAAGGATCGGATGCAG
CCAGGGCCTGTGTTTGGAAACATGGACAAATTTGTGGGGCTGGGAGTATTTGTAGACACCTACCCCAATG
AGGAGAAGCAGCAAGAGCGGGTATTCCTTACATCTCAGCCATGGTGAACAACGGCTCCCTCAGCTATGA
TCATGAGCGGGATGGCGGCCTACAGAGCTGGGAGGCTGCACAGCCATTGTCCGCAATCTTCATTACGAC
ACCTTCTGGTGATTGCTACGTCAAGAGGCATTTGACGATAATGATGGATATTGATGGCAAGCATGAGT
GGAGGGACTGCATTGAAGTGCCCGGAGTCCGCCTGCCCGCGGCTACTACTTCGGCACCTCTCCATCAC
TGGGATCTCTCAGATAATCATGATGTCTTTTCCCTGAAGTTGTTTGAAGTGCAGTGGAGAGAACCCCA
GAAGAGGAAAAGCTCCATCGAGATGTGTTTCCCTCAGTGGACAATATGAAGTCCCTGAGATGACAG
CTCCACTGCCGCCCTGAGTGGCCTGGCCCTTTCCTCATCGTCTTTTTCTCCCTGGTGTTTTCTGTATT
TGCCATAGTCATTGGTATCATACTCTACAACAAATGGCAGGAACAGAGCCGAAAGCGCTTCTAC

ACGCGTACGCGGCCGCTCGAGCAGAACTCATCTCAGAAGAGGATCTGGCAGCAATGATATCCTGGATT
ACAAGGATGACGACGATAAGGTTTAA



[View online »](#)

Protein Sequence: >RC209496 protein sequence
Red=Cloning site Green=Tags(s)

MAATLGPLGSWQQWRRCLSARDGSRMLLLLLLLGSGQGPQQVGAGQTFEYLKREHLSKPYQGVGTGSSS
 LWNLMGNAMVMTQYIRLTPDMQSKQGalWNRVPCFLRDWELQVHFKIHGQKKNLHGDGLAIWYTKDRMQ
 PGPVFGNMDKFVGLGVFVDTPNNEEKQQERVFPYISAMVNNGSLSYDHERDGRPTELGGCTAIVRNLYHD
 TFLVIRYVKRHLTIMMDIDGKHEWRDCIEVPGVRLPRGYFSGTSSITGDLSDNHDVLSLKLFEFTVERTP
 EEEKLHRDVFPLPSVDNMKLPENTAPLPLSGLALFLIVFFSLVFSVFAIVIGIILYNKWQEQRKRFY

TRTRPLEQKLISEEDLAANDILDYKDDDDKV

Chromatograms: https://cdn.origene.com/chromatograms/mk6360_g02.zip

Restriction Sites: SgfI-MluI

Cloning Scheme:



ACCN: NM_030805

ORF Size: 1044 bp

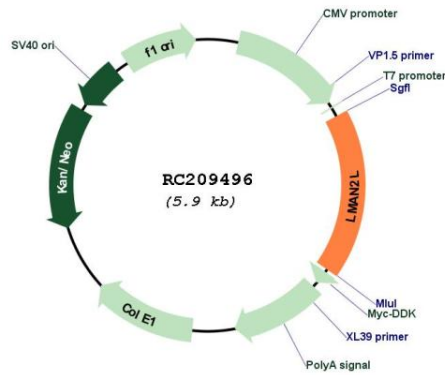
OTI Disclaimer: The molecular sequence of this clone aligns with the gene accession number as a point of reference only. However, individual transcript sequences of the same gene can differ through naturally occurring variations (e.g. polymorphisms), each with its own valid existence. This clone is substantially in agreement with the reference, but a complete review of all prevailing variants is recommended prior to use. [More info](#)

OTI Annotation: This clone was engineered to express the complete ORF with an expression tag. Expression varies depending on the nature of the gene.

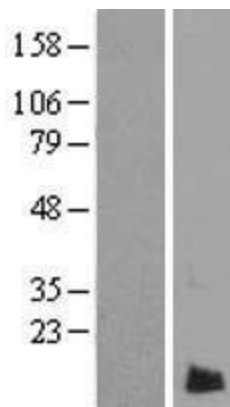
Components: The ORF clone is ion-exchange column purified and shipped in a 2D barcoded Matrix tube containing 10ug of transfection-ready, dried plasmid DNA (reconstitute with 100 ul of water).

Reconstitution Method:	<ol style="list-style-type: none">1. Centrifuge at 5,000xg for 5min.2. Carefully open the tube and add 100ul of sterile water to dissolve the DNA.3. Close the tube and incubate for 10 minutes at room temperature.4. Briefly vortex the tube and then do a quick spin (less than 5000xg) to concentrate the liquid at the bottom.5. Store the suspended plasmid at -20°C. The DNA is stable for at least one year from date of shipping when stored at -20°C.
RefSeq:	NM_030805.4
RefSeq Size:	2425 bp
RefSeq ORF:	1047 bp
Locus ID:	81562
UniProt ID:	Q9H0V9
Cytogenetics:	2q11.2
Domains:	Lectin_leg-like
Protein Families:	Druggable Genome, Transmembrane
MW:	39.7 kDa
Gene Summary:	<p>This gene encodes a protein belonging to the L-type lectin group of type 1 membrane proteins, which function in the mammalian early secretory pathway. These proteins contain luminal carbohydrate recognition domains, which display homology to leguminous lectins. Unlike other proteins of the group, which cycle in the early secretory pathway and are predominantly associated with post endoplasmic reticulum membranes, the protein encoded by this gene is a non-cycling resident protein of the ER, where it functions as a cargo receptor for glycoproteins. It is proposed to regulate exchange of folded proteins for transport to the Golgi and exchange of misfolded glycoproteins for transport to the ubiquitin-proteasome pathway. [provided by RefSeq, Apr 2016]</p>

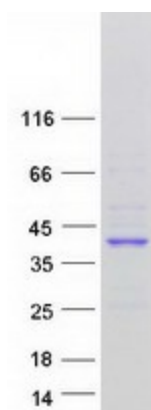
Product images:



Circular map for RC209496



Western blot validation of overexpression lysate (Cat# [LY410700]) using anti-DDK antibody (Cat# [TA50011-100]). Left: Cell lysates from untransfected HEK293T cells; Right: Cell lysates from HEK293T cells transfected with RC209496 using transfection reagent MegaTran 2.0 (Cat# [TT210002]).



Coomassie blue staining of purified LMAN2L protein (Cat# [TP309496]). The protein was produced from HEK293T cells transfected with LMAN2L cDNA clone (Cat# RC209496) using MegaTran 2.0 (Cat# [TT210002]).