

Product datasheet for RC209490

C1orf198 (NM_032800) Human Tagged ORF Clone

Product data:

Product Type:	Expression Plasmids
Product Name:	C1orf198 (NM_032800) Human Tagged ORF Clone
Tag:	Myc-DDK
Symbol:	C1orf198
Mammalian Cell Selection:	Neomycin
Vector:	pCMV6-Entry (PS100001)
E. coli Selection:	Kanamycin (25 ug/mL)
ORF Nucleotide Sequence:	>RC209490 representing NM_032800 Red=Cloning site Blue=ORF Green=Tags(s)

CTATAGGGCGGCCGGGAATTCGTGCGACTGGATCCGGTACCGAGGAGATCTGCCGCCGCGATCGCCGGCCG
GCC

ATGGCGTCCATGGCGCGCGCATCGCGGCTTCGCGCTCGGCGGTCATGAGCGGGAACCGGCTCTGGACG
ACCGGGAGCGAAAGCGCTTCACTTACTTCTCGTTCGCTGAGCCCCATGGCCAGGAAGATCATGCAGGACAA
GGAGAAGATCCGCGAGAAGTACGGGCCGAGTGGGCGCGCTGCCGCCGCGCAGCAGGACGAGATCATC
GACCGGTGCCTGGTGGGGCCGCGCCCCGCGCCCCGAGACCCCGGGGACTCGGAGGAGCTCACGCGCT
TCCCCGGCTTGGCGGGCCACGGGCCAGAAGGTGGTGCCTTCGGGGACGAGGATCTAACTTGGCAAGA
TGAGCACTCTGCCCTTTCTCCTGGAAACAAAGAGTCAGATGGAGTTCAATATCTCCGCCCTATCCATC
CAGGAGCCGAGCAACGGCACCGCCGACGAGCCAGACCACTGTCAAAGCTTCCAGGGCTCCAGG
CCCTCAAGTCTCCAAAGGCAGCAGGTCTCCAGCCTGGACGCCCTGGGCCCCACCAGGAAGGAGGAGGA
AGCGTCATTCTGGAAGATCAATGCTGAGCGGTCCCGAGGGGAGGGCCTGAGGCCGAGTTCAGTCGCTG
ACCCCTAGCCAGATCAAGTCCATGGAGAAGGGGAAAAGGTCTTGCTCCCTGCTACCGGCAGGAACCTG
CCCCGAAGGACAGGGAGGCCAAGGTGAAAGGCCAGCACCTCCGTGAGGACGAGTCTCTCCAA
CGTGAGCACCGAACGTGAGAGACCCAGCCTGTCCAGGCCTTCCAGTGCAGTGCACGAGGCTGCCCC
TCCCAGCTCGAGGGAAGCTGCCATCTCCTGATGTCAGGCAGGACGATGGGAAGACACCCTGTTCTCGG
AACCCAAGTTTGACAGGTCAGCTCAAGTAATGTCGTCTTGAAGACGGGATTTGATTTTCTGGACAATTG
G

ACGCGTACGCGGCCGCTCGAGCAGAACTCATCTCAGAAGAGGATCTGGCAGCAAATGATATCCTGGATT
ACAAGGATGACGACGATAAGGTTTAA



[View online »](#)

Protein Sequence: >RC209490 representing NM_032800
Red=Cloning site Green=Tags(s)

MASMAAAIAASRSVMSGNRPLDDREKRFTYFSSLSPMARKIMQDKEKIREKYGPEWARLPPAQQDEII
 DRCLVGPAPAPRDPGDSEELTRFPGLRGPTGQKVVRFGDEDLTWQDEHSAPFSWETKSQMEFSISALSI
 QEPSNGTAASEPRPLSKASQGSQALKSSQGSRSSLDALGPTRKEEEASFWKINAERSRGEGPEAEFQSL
 TPSQIKSMEKGEKVLPPCYRQEPAPKDREKVERPSTLRQEQRPLPNVSTERERPQPVQAFSSALHEAAP
 SQLEGLKLPSPDVRQDDGEDTLFSEPKFAQVSSSNVVLKTGFDFLDNW

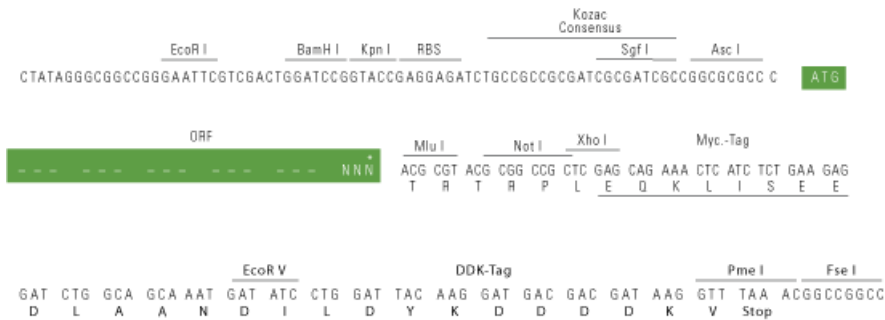
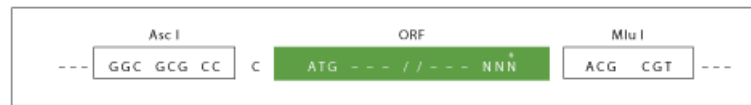
TRTRPLEQKLISEEDLAANDILDYKDDDDKV

Chromatograms: https://cdn.origene.com/chromatograms/mg4348_g01.zip

Restriction Sites: AscI-MluI

Cloning Scheme:

Cloning sites used for ORF Shuttling:



* The last codon before the Stop codon of the ORF

ACCN: NM_032800

ORF Size: 981 bp

OTI Disclaimer: The molecular sequence of this clone aligns with the gene accession number as a point of reference only. However, individual transcript sequences of the same gene can differ through naturally occurring variations (e.g. polymorphisms), each with its own valid existence. This clone is substantially in agreement with the reference, but a complete review of all prevailing variants is recommended prior to use. [More info](#)

OTI Annotation: This clone was engineered to express the complete ORF with an expression tag. Expression varies depending on the nature of the gene.

Components: The ORF clone is ion-exchange column purified and shipped in a 2D barcoded Matrix tube containing 10ug of transfection-ready, dried plasmid DNA (reconstitute with 100 ul of water).

Reconstitution Method:

1. Centrifuge at 5,000xg for 5min.
2. Carefully open the tube and add 100ul of sterile water to dissolve the DNA.
3. Close the tube and incubate for 10 minutes at room temperature.
4. Briefly vortex the tube and then do a quick spin (less than 5000xg) to concentrate the liquid at the bottom.
5. Store the suspended plasmid at -20°C. The DNA is stable for at least one year from date of shipping when stored at -20°C.

Note: Plasmids are not sterile. For experiments where strict sterility is required, filtration with 0.22um filter is required.

RefSeq: [NM_032800.3](#)

RefSeq Size: 3733 bp

RefSeq ORF: 984 bp

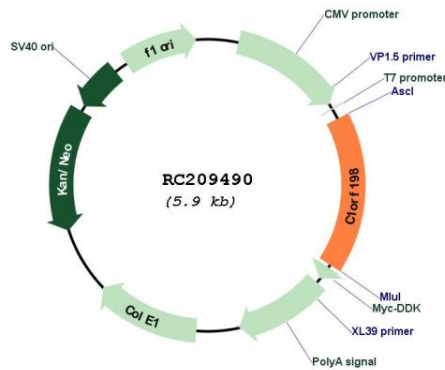
Locus ID: 84886

UniProt ID: [Q9H425](#)

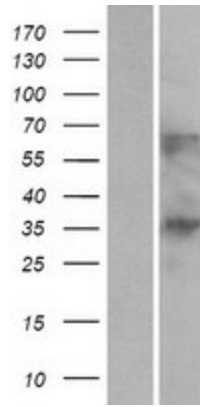
Cytogenetics: 1q42.2

MW: 36.2 kDa

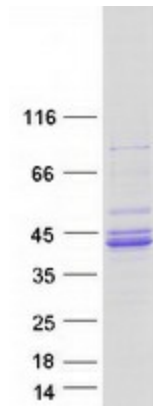
Product images:



Circular map for RC209490



Western blot validation of overexpression lysate (Cat# [LY409807]) using anti-DDK antibody (Cat# [TA50011-100]). Left: Cell lysates from untransfected HEK293T cells; Right: Cell lysates from HEK293T cells transfected with RC209490 using transfection reagent MegaTran 2.0 (Cat# [TT210002]).



Coomassie blue staining of purified C1orf198 protein (Cat# [TP309490]). The protein was produced from HEK293T cells transfected with C1orf198 cDNA clone (Cat# RC209490) using MegaTran 2.0 (Cat# [TT210002]).