

Product datasheet for **RC209489**

PPP1R15B (NM_032833) Human Tagged ORF Clone

Product data:

Product Type:	Expression Plasmids
Product Name:	PPP1R15B (NM_032833) Human Tagged ORF Clone
Tag:	Myc-DDK
Symbol:	PPP1R15B
Synonyms:	CREP; MSSGM2
Mammalian Cell Selection:	Neomycin
Vector:	pCMV6-Entry (PS100001)
E. coli Selection:	Kanamycin (25 ug/mL)



[View online »](#)

ORF Nucleotide Sequence:

>RC209489 ORF sequence
 Red=Cloning site Blue=ORF Green=Tags(s)

CTATAGGGCGGCCGGGAATTCGTCGACTGGATCCGGTACCGAGGAGATCTGCCGCCGCGATCGCCGGCGC
 GCC

ATGGAGCCGGGGACAGGCGGATCGCGAAACGGCTTGGCCCTCGGGCGGGCTTCCGGTTCTGGCCACCT
 TTTCCCTCGGCGATCGCAAGCAGGCTCTTCTAAGTTCGCGACGCTCTTGGCCCGAAAACCTCCGGAA
 CCCCACACTGTTTCTCTGCCCAGCCGAGACTCGGGTCAGTTACTGGACGAAACTGCTCTCCAGCTC
 CTTGCGCCGCTCCCGGATTGCTTCAGAAGGTGCTAATTTGGAGCCAACCTTTCCGGTGAATGTTCCGA
 CCAGATGGCTAGATTTTCTGAGTCTACAGCGCCCTGAGAGCCCTGAAGGGACGGGAGAAAACAGCCGC
 CCCCACAGCGCAGAAATCTTTGAGTTCGCTGCAGCTCGACTCCTCAGACCCCTCGGTACCAGTCCCCTT
 GATTGGCTAGAGAGGGGATCCACTGGCAATACTCGCCCCAGACCTAAAATTGGAGCTTAAGGCCAAGG
 GAAGTCTTTGGACCCTGCAGCACAGGCTTTCTCTTAGAGCAGCAGCTGTGGGAGTGGAGCTGTTGCC
 CAGTAGCCTTCAATCCCCTGTACTCTAACCGGGAACCTGGCTCTTCGCCCTCTGGGCCTAAACATT
 CAACGCATAGACAATTTCAAGTGGTATCTATTTGCTGAACCCCTCCTACCTGGACTGTTTCTAGGC
 TAGAAGTCAGCTATCAGAACAGTGATGGAATAGCGAGGTAGTCGGCTTCCAGACACTAACCCAGAGAG
 CAGCTGCCTGAGAGAGGACCATTGTATCCCCAGCCGCTGAGTGCAGAACTATTCCGGCCTCGTGGCAG
 GGATGTCCACCTCTTCTACGGAAGGCCTACCAGAAATCACCATCTTCGCATGAAACGGCTGGAATTC
 TTCAACAGGCTAGCAAGGGGCAAGATTTACCCACCCCTGACCAGGATAATGGCTACCACAGCCTGGAGGA
 GGAACACAGCCTTCTCCGGATGGATCCAAAACACTGCAGAGATAACCCAACACAGTTTGTTCCTGCTGCT
 GGAGACATTCCTGAAACACCCAGGAATCCACTGAAGAAAAAATAGAATTATTAACACAGAGGTTCCAC
 TTGCTTTGGAAGAAGAGAGCCCTTCTGAGGGCTGTCCATCTAGTGAGATACCTATGGAAGGAGCCTGG
 AGAGGGCCGAATAAGTGTAGTTGATTACTACCTAGAAAGGTGACCTTCCCATTCTGCCAGACCAGCT
 TGTAGTAACAACTGATAGATTATTTTTGGGAGGTGCATCCAGTGACCTGGAAACAAGTTCTGATCCAG
 AAGGTGAGGATTGGGATGAGGAAGCTGAGGATGATGGTTTTGATAGTGATAGCTACTGTGAGACTCAGA
 CCTTGAACAAGACCCTGAAGGGCTTACCTTTGGAACCTTTCTGCAGTGTAGATCCTTATAATCCCAG
 AACTTTACAGCAACAATTCAGACTGCTGCCAGAATTGTTCTGAAGAGCCTTCTGATTACAGAGAAGGATT
 TGTCTGGCAAGTCTGATCTAGAGAATTCCTCCAGTCTGGAAGCCTTCTGAGACCCCTGAGCATAGTTC
 TGGGGAGGAAGATGACTGGGAATCTAGTGCAGATGAAGCAGAGAGTCTCAAACCTGTGGAACCTATTCTGT
 AATTCTGATGACCCTACAACCTTTAAATTTAAGGCTCCTTTCAAACATCAGGGGAAAATGAGAAAG
 GCTGTCGTGACTCAGAGACCCCATCTGAGTCCATTGTGGCCATTTCTGAGTGTCACACCTTACTTTCTTG
 TAAGGTGCAGCTGTTGGGAGCCAAGAAAGTGAATGTCCAGACTCGGTACAGCGTGACGTTCTTTCTGGA
 GGAAGACACACATGTCAAAGAAAAAAGGTAACCTTCTTGAAGAAGTACTGAGTATTATATAAGTG
 GTGATGAGGATCGCAAAGGACATGGGAAGAATTTGCAAGGGATGGATGCAGGTTCCAGAAACGAATTCA
 AGAAACAGAAGATGCTATTGGATATTGCTTGACATTTGAACACAGAGAAAGAATGTTAATAGACTCCAG
 GGAACATGCTTCAAAGGACTTAATGTTCTCAAGCAATGT

ACGCGTACGCGGCCGCTCGAGCAGAACTCATCTCAGAAGAGGATCTGGCAGCAAATGATATCCTGGATT
 ACAAGGATGACGACGATAAGGTTTAA

Protein Sequence: >RC209489 protein sequence
Red=Cloning site Green=Tags(s)

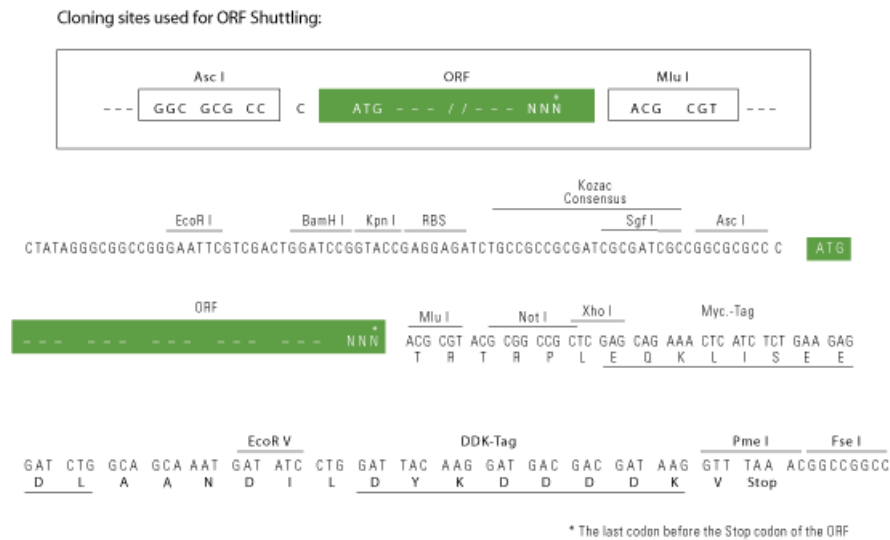
```
MEPGTGGSRKRLGPRAGFRFWPPFFPRRSQAGSSKFPTPLGPENSGNPTLLSSAQPETRVSYWTKLLSQL
LAPLPGLLQKVL IWSQLFGGMFPTRWLDFAGVYSALRALKGREKPAAPTAQKSLSSLQLDSSDPSVTSPL
DWLEEGIHWQYSPDLKLELKAKGSALDPAQAFLLEQQLWGVLLPSSLQSRLYSNRELGSSPSGPLNI
QRIDNFSVVSYLLNPSYLDLCPRLLEVSYQNSDGNSEVVGFTLTPESSCLREDHCHPQPLSAELIPASWQ
GCPPLSTEGLPEIHHLRMKRLFLQQASKGQDLPTPDQDNGYHSL EEEHSLLRMDPKHCRDNPTQFVPA
GDIPGNTQESTEEKIELLTTEVPLALEEESPSEGCPSSSEIPMEKEPEGGRISVVDYSYLEGLDLPISARPA
CSNKLIDYILGGASSDLETSSDPEGEDWDEEAEDDGFSDSSLSDSLQDPEGLHLWNSFCVSDYPNPQ
NFTATIQTAAARIVPEEPSDEKDLSGKSDLENSQSGSLPETPEHSSGEEDDWESSADEAESLKLWNSFC
NSDDPYNPLNFKAPFQTSGENEKGRDSETPSEIVAI SECHTL L SCKVQLLGSQSECPDVSQRDVL SG
GRHHTVKKKVTFL EEVTEYYISGDEDRKGPWEEFARDGCRFQKRIQETEDAIGYCLTFEHRERMFNRLQ
GTCFKGLNVLKQC
```

TRTRPLEQKLISEEDLAANDILDYKDDDDKV

Chromatograms: https://cdn.origene.com/chromatograms/mk6745_c02.zip

Restriction Sites: AscI-MluI

Cloning Scheme:



ACCN: NM_032833

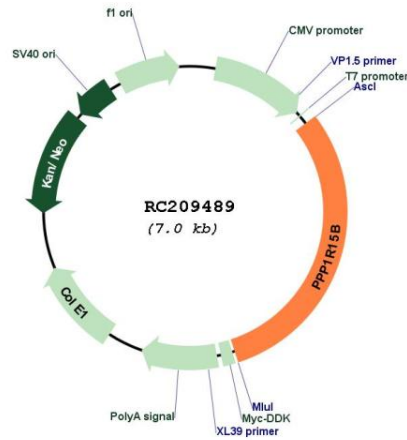
ORF Size: 2139 bp

OTI Disclaimer: The molecular sequence of this clone aligns with the gene accession number as a point of reference only. However, individual transcript sequences of the same gene can differ through naturally occurring variations (e.g. polymorphisms), each with its own valid existence. This clone is substantially in agreement with the reference, but a complete review of all prevailing variants is recommended prior to use. [More info](#)

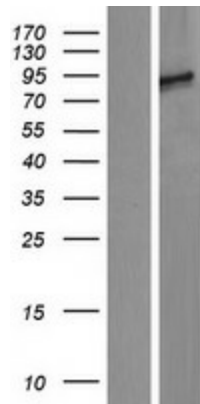
OTI Annotation: This clone was engineered to express the complete ORF with an expression tag. Expression varies depending on the nature of the gene.

Components:	The ORF clone is ion-exchange column purified and shipped in a 2D barcoded Matrix tube containing 10ug of transfection-ready, dried plasmid DNA (reconstitute with 100 ul of water).
Reconstitution Method:	<ol style="list-style-type: none">1. Centrifuge at 5,000xg for 5min.2. Carefully open the tube and add 100ul of sterile water to dissolve the DNA.3. Close the tube and incubate for 10 minutes at room temperature.4. Briefly vortex the tube and then do a quick spin (less than 5000xg) to concentrate the liquid at the bottom.5. Store the suspended plasmid at -20°C. The DNA is stable for at least one year from date of shipping when stored at -20°C.
RefSeq:	<u>NM_032833.2</u> , <u>NP_116222.2</u>
RefSeq Size:	5276 bp
RefSeq ORF:	2142 bp
Locus ID:	84919
Cytogenetics:	1q32.1
Protein Families:	Druggable Genome
MW:	79.1 kDa
Gene Summary:	<p>This gene encodes a protein phosphatase I-interacting protein that promotes the dephosphorylation of eukaryotic translation initiation factor 2A to regulate translation under conditions of cellular stress. The transcribed messenger RNA contains two upstream open reading frames (ORFs) that repress translation of the main protein coding ORF under normal conditions, while the protein coding ORF is expressed at high levels in response to stress. Continual translation of the mRNA under conditions of eukaryotic translation initiation factor 2A inactivation is thought to create a feedback loop for reactivation of the gene during recovery from stress. In addition, it has been shown that this protein plays a role in membrane traffic that is independent of translation and that it is required for exocytosis from erythroleukemia cells. Allelic variants of this gene are associated with microcephaly, short stature, and impaired glucose metabolism. [provided by RefSeq, Feb 2016]</p>

Product images:



Circular map for RC209489



Western blot validation of overexpression lysate (Cat# [LY409921]) using anti-DDK antibody (Cat# [TA50011-100]). Left: Cell lysates from untransfected HEK293T cells; Right: Cell lysates from HEK293T cells transfected with RC209489 using transfection reagent MegaTran 2.0 (Cat# [TT210002]).