

Product datasheet for **RC209487**

Sec8 (EXOC4) (NM_021807) Human Tagged ORF Clone

Product data:

Product Type:	Expression Plasmids
Product Name:	Sec8 (EXOC4) (NM_021807) Human Tagged ORF Clone
Tag:	Myc-DDK
Symbol:	Sec8
Synonyms:	SEC8; SEC8L1; Sec8p
Mammalian Cell Selection:	Neomycin
Vector:	pCMV6-Entry (PS100001)
E. coli Selection:	Kanamycin (25 ug/mL)



[View online »](#)

ORF Nucleotide
Sequence:

>RC209487 ORF sequence
Red=Cloning site Blue=ORF Green=Tags(s)

TTTTGTAATACGACTCACTATAGGGCGGCCGGAATTCGTGACTGGATCCGGTACCGAGGAGATCTGCC
GCC**CGGATCGCC**

ATGGCGGCAGAAGCAGCTGGTGGGAAATACAGAAGCACAGTCAGCAAAGCAAAGACCCCTCGGGGCTGC
TCATCTCTGTGATCAGGACTCTGTCTACTAGTGACGATGTCGAAGACAGGGAAAATGAAAAGGGTCGCCT
TGAAGAAGCCTACGAGAAATGTGACCGTGACCTGGATGAATTGATTGTACAGCACTACACAGAATTGACG
ACAGCCATTTCGCACATACCAGAGCATCACAGAGCGCATCACTAACTCCCGAAAATAAAATAAAGCAGGTAA
AAGAGAACCTGCTTTCATGCAAGATGCTGCTGCACTGCAAACGGGATGAGCTTCGGAAAATGTGGATTGA
AGGAATTGAGCATAAGCATGTCTGAACTTGTGGATGAAATTGAGAATATCAAGCAAGTGCCTCAAAG
CTGGAACAGTGCATGGCCAGCAAGCACTATCTCAGTGCCACTGACATGTTGGTGCAGCAGTTGAGTCTT
TGGAGGGCCCCCTGCTCCAGGTGGAAGGACTGAGTGACCTTCGACTAGAGCTTCACAGCAAGAAGATGAA
CCTTCACTTGGTTCTCATAGATGAACTACACCGGCACCTGTACATCAAATCGACTAGCCGAGTTGTGCAG
CGTAACAAGGAAAAAGGGAAAATCAGCTCCCTCGTGAAGATGCTTCTGTTCCCTCTGATTGATGTTACAA
ACCTCCCTACTCCTCGAAAATTCCTTGATACCTCTCACTATTCTACTGCTGGAAGCTCAAGTGTGAGGGA
GATAAATCTGCAGGACATCAAGGAAGATTTAGAATTGGATCCAGAGGAAAACAGCACCCCTGTTTATGGGT
ATCCTCATTAAAGGGCTTGGCGAAACTGAAGAAGATCCCAGAAAACAGTTAAGGCAATCATAGAGCGCTTGG
AGCAGGAGTTGAAGCAAATTTGTGAAGAGGTCTACAACCCAGGTGGCAGACAGTGGCTATCAGCGGGGGGA
GAACGTTACTGTGGAGAACCAACCAAGGTTGCTTCTAGAAGTCTGGAGTTACTGTTTGACAAGTTAAT
GCTGTAGCCGCTGCACACTCTGTGGTCTGGGATACCTGCAGGACACTGTAGTGACTCCACTGACTCAGC
AGGAAGATACAACTGTATGATATGGCAGATGTATGGGTGAAGATCCAAGATGTTCTACAGATGCTATT
AACTGAGTACTTGGATATGAAAAATACTCGTACGGCCTCTGAACCATCAGCTCAACTAAGCTATGCCAGC
ACTGGACGAGAGTTTGCAGCCTTTTTTGGCAAGAAGAAACCTCAAAGGCCAAAAAATTCTCTTTTCAAGT
TCGAATCGTCTCCCATGCCATCAGTATGAGCGCCTATCTGCGAGAACAGAGAAGGGAGCTCTATAGTCG
GAGTGGAGAAGTCAAGGGGGTCTGATGACAACCTTACTTGAAGGTGGAGGAACAAAATTTGCTGCAAAA
CCTGGAGCCAGAAAACATTACCGTCATATCCACCCATTACTAAGATTTATTCAGGAGATTGAGCATGCTC
TGGGTCTTGGCCAGCCAAACAGTGTCTCTTCGAGAGTTTCTCACCGTGTACATCAAAAACATCTTTCT
CAATCAAGTCTTGCTGAGATCAACAAGGAGATTGAAGGAGTCACTAAAACATCTGACCCTTTGAAGATT
CTGGCCAAACGCAGACACCATGAAGGTGCTGGGAGTGCAGCGGCCCTCCTACAGAGCACAATCATTGTGG
AGAAGACAGTTCAAGACCTCCTGAACCTGATGCATGACTTGAGTGATATTCAGATCAATTCCTCAACAT
GGTGTGCGTGAAGCTCCAGGAGTACAAGGACACCTGCACTGCAGCTTACAGGGGTATTGTCCAGTCAGAA
GAAAAACTTGTATCAGTGCATCCTGGGCAAAAGATGATGATATCAGCAGACTCTTGAAATCTCTACCAA
ACTGGATGAATATGGCTCAACCCAAACAGCTGAGGCCAAAAAGAGAGGAGGAAGAAGATTCATAAGGGC
AGCTTTTGGCAAGGAGTCTGAAGTTCTTATTGGGAACCTGGGTGATAAATTAATCCCTCCACAAGACATC
CTTCGTGACGTGAGTACCTCAAAGCCTTGGCCAAACATGCATGAAAGCCTGGAATGGTTGGCAAGTCGAA
CAAAGTCAGCTTTCTCCAATCTTTCTACATCCCAGATGCTTTCTCCTGCTCAAGACAGCCACACGAAAC
GGATCTCCCCCAGTGTGAGAGCAGATCATGCAGACTCTCAGTGAACCTGCAAAATCGTTCCAGGATATG
GCTGACCCTGCTTGTCTTACATCTGGAAGTGAGGGTTCACTGTTTCCACTATCTTATCCCTCTTG
CAAAGGAGGGGAACTATGCCATTGTGGCTAATGTGAAAGTATGGATTATGACCCCTGGTGGTCAAGCT
CAACAAAGATATCAGCGCCATTGAAGAGGCCATGAGCGCCAGCCTTACAGCAGCACAAGTTCCAGTATATC
TTCGAAGGCTGGCCACCTGATCTCCTGCATCCTCATTAAATGGTGCCAGTACTTCAGGCGCATCAGTG
AGTCTGGCATCAAGAAAATGTGTAGGAACATTTTTGTTCTTACAGCAGAATTTGACCAACATCACCATGTC
GCGGGAGGCAGACCTGGACTTTGCAAGGCAGTACTACGAGATGCTTTACAACACAGCTGACGAGCTCCTG
AACCTGGTGGTGGACCAGGGTGTGAAGTACACGGAGCTGGAGTACATCCACGCTCTGACCCTGCTGCACC
GCAGCCAAACTGGGTGGGGAACTGACCACCCAGAACACGAGGCTGCAGAGGCTCAAAGAGATCATCTG
CGAGCAGGCTGCCATCAAGCAAGCCACCAAGGACAAGAAGATAACTACCGTT

ACGCGTACGCGGCCGCTCGAGCAGAAACTCATCTCAGAAGAGGATCTGGCAGCAAATGATATCCTGGATT
ACAAGGATGACGACGATAAGGTTTAA

Protein Sequence: >RC209487 protein sequence
 Red=Cloning site Green=Tags(s)

MAAEAAGGKYRSTVSKSKDPSGLLISVIRTLSTDDVEDRENEKGRLEEAYEKCDRDLDELIVQHYTELT
 TAIRTYQSITERITNSRNKIKQVKENLLSCKMLLHCKRDELRLKWIIEGIEHKHVLNLLDEIENIKQVPQK
 LEQCMASKHYLSATDMLVSAVESLEGPLLQVEGLSDLRLELHSHKMMNLHLVLELHHRHLYIKSTSRVQ
 RNKEKGISSLVKDASVPLIDVTNLPTPRKFLDTSHYTAGSSSVREINLQDIKEDLELDPEENSTLFMG
 ILIKGLAKLKKIPETVKAIERLEQELKQIVKRSTTQVADSGYQRGENVTVENQPRLLLELLELDFDKFN
 AVAAAHSVVLGYLQDVTVPLTQQEDIKLYDMADVWVKIQDVLQMLL TEYLDMKNTRTASEPSAQLSYAS
 TGREFAAFFAKKKPQRPKNSLFKFESSHAISMSAYLREQRRELYSRGELQGGPDDNLEGGGTFVCK
 PGARNITVIFHPLLRFIQEIEHALGLGPAKQCPLREFLTVYIKNIFLNQVLAEINKEIEGVTKTSDPLKI
 LANADTMKVLGVQRLLQSTIIVEKTVQDLLNLMHDL SAYSDQFLNMVCVKLQEYKDTCTAAYRGIVQSE
 EKLVISASWAKDDDISRLLKSLPNWMMAQPKQLRPKREEEEDF IRAAFGKSEVLI GNLDGKLI PPQDI
 LRDVSDLKALANMHESLEWLASRTKSAF SNLSTSQMLSPAQDSHTNTDLPVSEQIMQTL SELAKSFQDM
 ADRCLLVHLVVRVHCFHYLIPLAKEGNYAIVANVESMDYDPLVVKLNKDISAIEEAMSASLQQHKFYI
 FEGLGHLISCI LINGAQYFRRISESGIKMCRNIFVLQQLNTNITMSREADLDFARQYYEMLYNTADELL
 NLVVDQGVKYTELEYIHALTLLHRSQTGVGELTTQNTRLQRLKEIICEQAAIKQATKDKKITTV

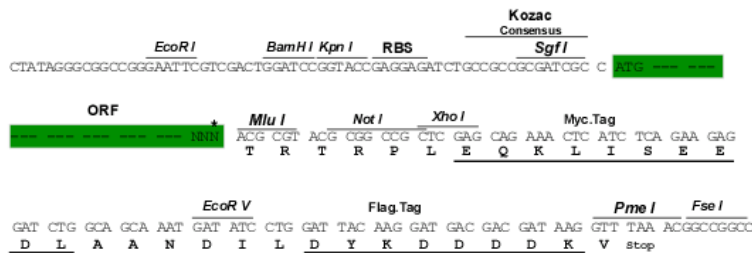
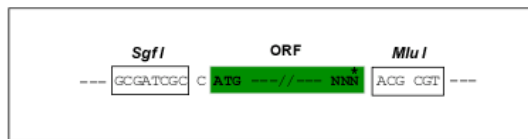
TRTRPLEQKLISEEDLAANDILDYKDDDDKV

Chromatograms: https://cdn.origene.com/chromatograms/mk6293_h05.zip

Restriction Sites: SgfI-MluI

Cloning Scheme:

Cloning sites used for ORF Shuttling:



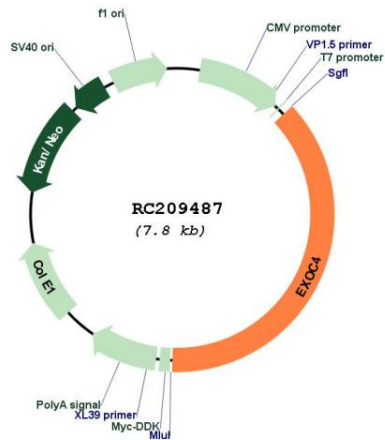
* The last codon before the Stop codon of the ORF

ACCN: NM_021807

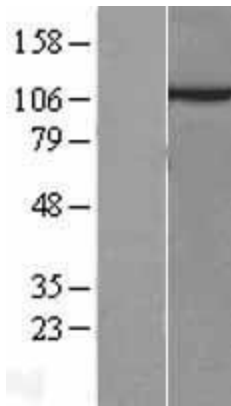
ORF Size: 2922 bp

OTI Disclaimer:	The molecular sequence of this clone aligns with the gene accession number as a point of reference only. However, individual transcript sequences of the same gene can differ through naturally occurring variations (e.g. polymorphisms), each with its own valid existence. This clone is substantially in agreement with the reference, but a complete review of all prevailing variants is recommended prior to use. More info
OTI Annotation:	This clone was engineered to express the complete ORF with an expression tag. Expression varies depending on the nature of the gene.
Components:	The ORF clone is ion-exchange column purified and shipped in a 2D barcoded Matrix tube containing 10ug of transfection-ready, dried plasmid DNA (reconstitute with 100 ul of water).
Reconstitution Method:	<ol style="list-style-type: none">1. Centrifuge at 5,000xg for 5min.2. Carefully open the tube and add 100ul of sterile water to dissolve the DNA.3. Close the tube and incubate for 10 minutes at room temperature.4. Briefly vortex the tube and then do a quick spin (less than 5000xg) to concentrate the liquid at the bottom.5. Store the suspended plasmid at -20°C. The DNA is stable for at least one year from date of shipping when stored at -20°C.
Note:	Plasmids are not sterile. For experiments where strict sterility is required, filtration with 0.22um filter is required.
RefSeq:	NM_021807.4
RefSeq Size:	4203 bp
RefSeq ORF:	2925 bp
Locus ID:	60412
UniProt ID:	Q96A65
Cytogenetics:	7q33
Domains:	Sec8_exocyst
Protein Pathways:	Tight junction
MW:	110.5 kDa
Gene Summary:	The protein encoded by this gene is a component of the exocyst complex, a multiple protein complex essential for targeting exocytic vesicles to specific docking sites on the plasma membrane. Though best characterized in yeast, the component proteins and functions of exocyst complex have been demonstrated to be highly conserved in higher eukaryotes. At least eight components of the exocyst complex, including this protein, are found to interact with the actin cytoskeletal remodeling and vesicle transport machinery. The complex is also essential for the biogenesis of epithelial cell surface polarity. Alternate transcriptional splice variants, encoding different isoforms, have been characterized. [provided by RefSeq, Jul 2008]

Product images:



Circular map for RC209487



Western blot validation of overexpression lysate (Cat# [LY411914]) using anti-DDK antibody (Cat# [TA50011-100]). Left: Cell lysates from untransfected HEK293T cells; Right: Cell lysates from HEK293T cells transfected with RC209487 using transfection reagent MegaTran 2.0 (Cat# [TT210002]).