

Product datasheet for **RC209484**

KLHL13 (NM_033495) Human Tagged ORF Clone

Product data:

Product Type:	Expression Plasmids
Product Name:	KLHL13 (NM_033495) Human Tagged ORF Clone
Tag:	Myc-DDK
Symbol:	KLHL13
Synonyms:	BKLHD2
Mammalian Cell Selection:	Neomycin
Vector:	pCMV6-Entry (PS100001)
E. coli Selection:	Kanamycin (25 ug/mL)



[View online »](#)

**ORF Nucleotide
Sequence:**

>RC209484 ORF sequence
 Red=Cloning site Blue=ORF Green=Tags(s)

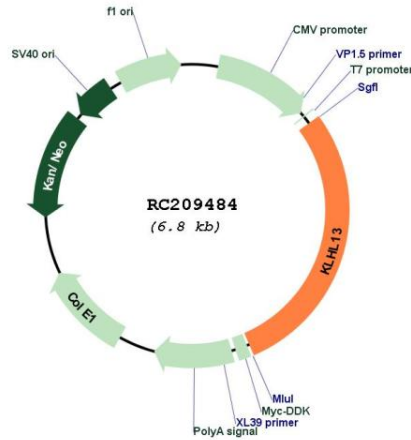
TTTTGTAATACGACTCACTATAGGGCGGCCGGAATTCGTCGACTGGATCCGGTACCGAGGAGATCTGCC
 GCC**CGGATCGCC**

ATGCCATTGAAATGGAAAACGAGCTCTCCTGCTATCTGGAAATCCCAGTTCCTGTGCTTAAACATCCA
 GGCAACTCCACTTTCTCCAGCATACATATCTCTCGTGGAAAGAGGAAGACCAACACATGAAATTGTCCT
 TGGAGGCAGCGAAATGGGCCTCTCATCCATTTGCAAGTTCCTCAAGGCAGGACCTACACGCATCTTACC
 AGCAATACCCACAGTTCTGTGGTGTACAGGGCTTTGACCAGCTTCGACTTGAAGGATTGCTTTGTGATG
 TGACCCTGATGCCAGGTGACACAGATGATGCTTCCCTGTGCATAGAGTCATGATGGCATCTGCTAGTGA
 TTACTTCAAGGCTATGTTACAGGTGGAATGAAAGAACAAGATTTAATGTGCATTAACCTCATGGTGTG
 AGCAAAGTCGGTCTAAGGAAAATTATTGATTTCACTTACTGCAAAGCTTTCTCTTAATATGGACAACC
 TTCAAGACACGCTGGAAGCTGCCAGTTTCTACAGATTCTGCCAGTTTGGACTTCTGTAAGTGTCTTCT
 CATATCTGGGGTCACTTTAGACAAGTGTGTTGAAGTTGGACGGATTGCCAACACCTACAATCTAACCGAA
 GTGGATAAATACGTTAACAGTTTCGTCCTGAAGAATTTCTGCAATGCTGAGCAGAGGGGAGTTCTTGA
 AACTCCCTTTGAGCGTCTTGCCTTCGTCTTCCAGTAATAGCCTTAAGCACTGTACTGAACTTGAGCT
 CTTAAGGCTACCTGTCGTTGGCTTCGCCTGGAAGAGCCTCGGATGGACTTTGCTGCAAAATTAATGAAG
 AACATACGATTTCCACTGATGACACCACAGGAGCTCATAATTACGTGCAAACGGTGGATTTTCATGAGAA
 CTGACAATACTTGTGTAATTTGCTTTTGGAAAGCCAGCAATTACCAATGATGCCATATATGCAGCCAGT
 TATGCAGTCAGACAGGACTGCCATTAGTCTGACACCACTCACTTGGTTACACTAGGAGGAGTGTGAGG
 CAGCAGCTGGTTGTCAGTAAGGAATTGCCATGTATGATGAAAAGGCCCATGAGTGGAAATCGTTAGCCC
 CCATGGATGCCCAAGGTACCAGCATGGCATCGCCGTCATTGGAATTTCTCTATGTGGTTGGCGGACA
 GAGTAATTATGATACAAAAGGAAAAACGGCAGTTGATACAGTCTTCAGATTTGATCCTCGATACAATAAA
 TGGATGCAAGTTGCATCTTTAAATGAAAAGCGCACCTTCTCCACCTAAGTGCCCTCAAAGGATATCTGT
 ATGCAGTTGGTGGCGGAAATGCAGCAGGTGAAGTCCACAGTAGAATGTTACAATCCAAGAACAATGA
 ATGGACCTATGTTGCCAAATGAGTGAAGCCACTATGGCCATGCTGGAAGTGTGATGGAGGAGTGTG
 TATATTTAGGAGGAATTACTCATGATACTTTCCAAAAGGAGCTCATGTGCTTTGACCCTGATACTGACA
 AATGGATCCAGAAGGCGCAATGACCACTGTGAGAGTCTGCATTGCATGTGTACAGTGGGAGAAAGGCT
 CTATGTCATTGGTGGCAATCACTTCAGAGGAACAAGTATTATGATGATGTCCTAAGCTGTGAATACTAT
 TCACCTATCCTTGACCAGTGGACCCCAATTGCTGCCATGTTAAGAGGGCAGAGTGTGTTGGGGTCTGCTG
 TCTTCGAAAATAAAATCTATGTGTTGGGGGTATTCTTGAATAATCGTTGTATGGTAGAGATAGTGCA
 GAAATATGATCCAGATAAAGATGAATGGCATAAGGTTTTGATCTGCCAGAATCCCTTGGTGGCATTCTG
 GCTTGCACTCACAGTTTTCCACCAGAAGAAACCACACCATCACCTTCTAGAGAGTCCCTCTTTCTG
 CACCT

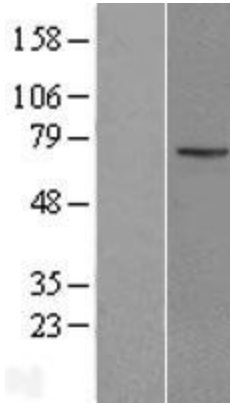
ACGCGTACGCGGCCGCTCGAGCAGAACTCATCTCAGAAGAGGATCTGGCAGCAATGATATCCTGGATT
 ACAAGGATGACGACGATAAGGTTTAA

Reconstitution Method:	<ol style="list-style-type: none">1. Centrifuge at 5,000xg for 5min.2. Carefully open the tube and add 100ul of sterile water to dissolve the DNA.3. Close the tube and incubate for 10 minutes at room temperature.4. Briefly vortex the tube and then do a quick spin (less than 5000xg) to concentrate the liquid at the bottom.5. Store the suspended plasmid at -20°C. The DNA is stable for at least one year from date of shipping when stored at -20°C.
Note:	Plasmids are not sterile. For experiments where strict sterility is required, filtration with 0.22um filter is required.
RefSeq:	NM_033495.3
RefSeq Size:	3991 bp
RefSeq ORF:	1968 bp
Locus ID:	90293
UniProt ID:	Q9P2N7
Cytogenetics:	Xq24
Domains:	BTB, Kelch
Protein Pathways:	Ubiquitin mediated proteolysis
MW:	73.9 kDa
Gene Summary:	This gene encodes a BTB and kelch domain containing protein and belongs to the kelch repeat domain containing superfamily of proteins. The encoded protein functions as an adaptor protein that complexes with Cullin 3 and other proteins to form the Cullin 3-based E3 ubiquitin-protein ligase complex. This complex is necessary for proper chromosome segregation and completion of cytokinesis. Alternate splicing results in multiple transcript variants. [provided by RefSeq, Mar 2010]

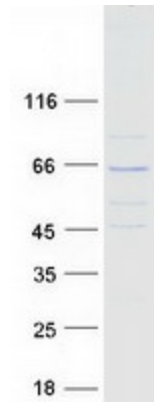
Product images:



Circular map for RC209484



Western blot validation of overexpression lysate (Cat# [LY409529]) using anti-DDK antibody (Cat# [TA50011-100]). Left: Cell lysates from untransfected HEK293T cells; Right: Cell lysates from HEK293T cells transfected with RC209484 using transfection reagent MegaTran 2.0 (Cat# [TT210002]).



Coomassie blue staining of purified KLHL13 protein (Cat# [TP309484]). The protein was produced from HEK293T cells transfected with KLHL13 cDNA clone (Cat# RC209484) using MegaTran 2.0 (Cat# [TT210002]).