

## Product datasheet for **RC209481**

### **ARMC6 (NM\_033415) Human Tagged ORF Clone**

#### **Product data:**

Product Type:	Expression Plasmids
Product Name:	ARMC6 (NM_033415) Human Tagged ORF Clone
Tag:	Myc-DDK
Symbol:	ARMC6
Synonyms:	R30923_1
Mammalian Cell Selection:	Neomycin
Vector:	pCMV6-Entry (PS100001)
E. coli Selection:	Kanamycin (25 ug/mL)



[View online »](#)

**ORF Nucleotide Sequence:**

>RC209481 ORF sequence  
 Red=Cloning site Blue=ORF Green=Tags(s)

TTTTGTAATACGACTCACTATAGGGCGGCCGGAATTCGTCGACTGGATCCGGTACCGAGGAGATCTGCC  
 GCC**GCGATCGCC**

ATGGTCTCCAAGCGCATTGCCAGGAGACCTTTGATGCAGCTGTGCGCGAGAACATCGAGGAGTTTGCGA  
 TGGGGCCAGAGGAGGCAGTGAAAGAGGCCGTGGAGCAGTTTGAATCGCAAGGGGTTGATCTGAGCAACAT  
 TGTAAAGACGGCACCTAAAGTCTCTGCAGACGGATCCCAGGAGCCACACATGACATCCTGCAGATGCTC  
 AGTGACCTCCAGGAGTCTGTGGCCAGCTCTCGCCCCAGGAGGTGTAGCATACTCACCCGCTTCTGCG  
 ACCAGTGCAAACAGGACAAGGCCTGCCGCTTCTCGCGGCCAGAAAGGGGCTACCCCATCATCTTAC  
 TGCCTGGAAGCTGGCCACTGCAGGTGACCAGGGCCTTCTGCTCCAGTCCCTCAATGCCCTGTCGGTGTG  
 ACTGATGGACAGCCAGACCTCCTGGATGCCAGGGCCTGCAGCTCCTAGTGGCCACGCTGACCCAGAATG  
 CTGATGAGGCTGACCTGACCTGCTCTGGGATCCGCTGTGTGCGTCACGCTTGCCTGAAACATGAACAGAA  
 TCGGCAAGACCTGGTAAAGCTGGCGTGTGCCTCTGCTGACTGGTGCCATCACCCATCATGGCCACCAC  
 ACTGACGTGGTACAGGGAAGCCTGCTGGGCCTGCGTGTGATGACCTTCGATGACGACATCCGTGTGCCCT  
 TTGGCCATGCCCAACCATGCCAAGATGATTGTGCAGGAGAACAAGGCTTGAAGGTGCTCATCGAAGC  
 CACCAAGCGTTCCTGGATAACCCTGGCATCCTGAGCGAGCTCTGTGAAACCCTGTCCCCTGGCCATT  
 CGCAACGAGTTCTGCCAGGAGGTGTCGACCTCGGGGCTGAGCATTCTGGTGTCCCTGCTAGCCGACT  
 GCAATGACCACCAGATGAGGGACCAGAGCGGCTTCCAGGAGTCTGTAAGCAAGTGTGAGCACCCTGCG  
 AGCCATCGCAGGCAACGACGACGTGAAAGATGCTATTGTCGCTGGTGGGACGGAGTCCATCGTGGCT  
 GCTATGACCCAGCATCTGACAGCCCCAGGTGTGTGAGCAGAGCTGCGCGGCCCTGTGCTTCCCTGGCCC  
 TGGCTAAGCCCCGACAACAGCCGCATCATCGTGGAGGGTGGCGGGCTGTGGCAGCAGTGCAGCCATGAA  
 GGCACACCCGCGAGAAGGCCGCGCTGCAGAAACAGGCTTGCATGCTGATCCGAAACCTGGTGGCCACGCG  
 CAGGCCTTCTCGAAGCCATCCTGGACCTGGGGCTGAGGCACTCATCATGAGGCCCGATGCCCCACC  
 GTGACTGTGAGGACGTGGCCAAGGCCGCTGCGGGACCTGGGTGTCATGTCGAGCTCCGAGAGCTGTG  
 GACAGGCCAGAGGGGCAACCTGGCGCCA

**ACGCGT**ACGCGGCCGCTCGAGCAGAAACTCATCTCAGAAGAGGATCTGGCAGCAATGATATCCTGGATT  
 ACAAGGATGACGACGATAAGGTTTAA

**Protein Sequence:**

>RC209481 protein sequence  
 Red=Cloning site Green=Tags(s)

MVSKRIAQETFDAAVRENIEEFAMGPPEAVKEAVEQFESQGVDSLNIIVKTA PKVSADGSQEPHTDILQML  
 SDLQESVASSRPQEV SAYL TRFCDQCKQDKACRFLAAQKGAYPIIFTAWKLATAGDQGLLLQSLNALSVL  
 TDGQPDLLDAQLLVATLTQNADEADLTCSGIRCVRHACLKHEQNRQDLVKAGVLP LLTGAITHHGH  
 TDVVREACWALRVMTFDDDIRVFPFGHAHNHAKMIVQENKGLKVLIEATKAFLDNPGILSELCGTLSRLAI  
 RNEFCQEVVDLGGLSILVSLADCNDHQMRDQSGVQELVKQVLSLRAIAGNDDVKDAIVRAGGTESIVA  
 AMTQHLTSPQVCEQSCAALCFLALRKPNSRIIVEGGGVAALQAMKAHPQKAGVQKQACMLIRNLVAHG  
 QAFSKPILDGAEALIMQARSAHRDCEDVAKAALRDLGCHVELRELWTGQRGNLAP

**TR**TRPLEQKLI SEEDLAANDILDYKDDDDKV

**Chromatograms:**

[https://cdn.origene.com/chromatograms/mk6358\\_h06.zip](https://cdn.origene.com/chromatograms/mk6358_h06.zip)

**Restriction Sites:**

Sgfl-Mlul

**Cloning Scheme:**


**ACCN:** NM\_033415

**ORF Size:** 1428 bp

**OTI Disclaimer:** The molecular sequence of this clone aligns with the gene accession number as a point of reference only. However, individual transcript sequences of the same gene can differ through naturally occurring variations (e.g. polymorphisms), each with its own valid existence. This clone is substantially in agreement with the reference, but a complete review of all prevailing variants is recommended prior to use. [More info](#)

**OTI Annotation:** This clone was engineered to express the complete ORF with an expression tag. Expression varies depending on the nature of the gene.

**Components:** The ORF clone is ion-exchange column purified and shipped in a 2D barcoded Matrix tube containing 10ug of transfection-ready, dried plasmid DNA (reconstitute with 100 ul of water).

- Reconstitution Method:**
1. Centrifuge at 5,000xg for 5min.
  2. Carefully open the tube and add 100ul of sterile water to dissolve the DNA.
  3. Close the tube and incubate for 10 minutes at room temperature.
  4. Briefly vortex the tube and then do a quick spin (less than 5000xg) to concentrate the liquid at the bottom.
  5. Store the suspended plasmid at -20°C. The DNA is stable for at least one year from date of shipping when stored at -20°C.

**RefSeq:** [NM\\_033415.4](#)

**RefSeq Size:** 2397 bp

**RefSeq ORF:** 1431 bp

**Locus ID:** 93436

**UniProt ID:** [Q6NXE6](#)

**Cytogenetics:** 19p13.11

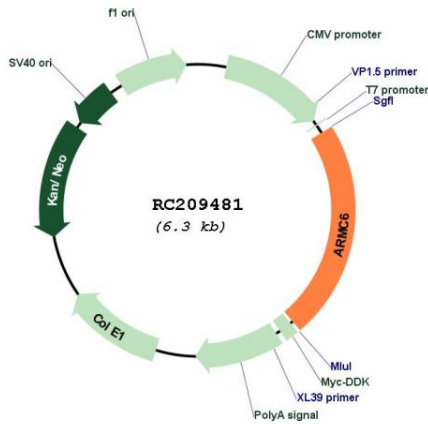
**Domains:** Armadillo\_seg

**Protein Families:** Stem cell - Pluripotency

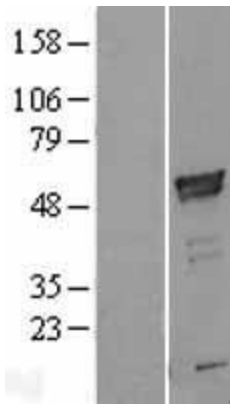
**MW:** 51.5 kDa

**Gene Summary:** The function of this gene's protein product has not been determined. A related protein in mouse suggests that this protein has a conserved function. Two transcript variants encoding different isoforms have been found for this gene. [provided by RefSeq, Nov 2010]

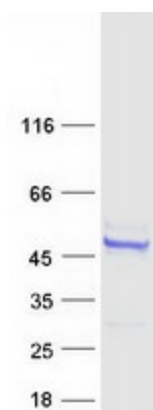
**Product images:**



Circular map for RC209481



Western blot validation of overexpression lysate (Cat# [LY409540]) using anti-DDK antibody (Cat# [TA50011-100]). Left: Cell lysates from untransfected HEK293T cells; Right: Cell lysates from HEK293T cells transfected with RC209481 using transfection reagent MegaTran 2.0 (Cat# [TT210002]).



Coomassie blue staining of purified ARMC6 protein (Cat# [TP309481]). The protein was produced from HEK293T cells transfected with ARMC6 cDNA clone (Cat# RC209481) using MegaTran 2.0 (Cat# [TT210002]).