

## Product datasheet for **RC209479**

### **HRPT2 (CDC73) (NM\_024529) Human Tagged ORF Clone**

#### **Product data:**

Product Type:	Expression Plasmids
Product Name:	HRPT2 (CDC73) (NM_024529) Human Tagged ORF Clone
Tag:	Myc-DDK
Symbol:	CDC73
Synonyms:	C1orf28; FIHP; HPTJT; HRPT1; HRPT2; HYX
Vector:	pCMV6-Entry (PS100001)
E. coli Selection:	Kanamycin (25 ug/mL)
Cell Selection:	Neomycin



[View online »](#)

ORF Nucleotide  
Sequence:

>RC209479 ORF sequence  
Red=Cloning site Blue=ORF Green=Tags(s)

TTTTGTAATACGACTCACTATAGGGCGGCCGGAATTCGTCGACTGGATCCGGTACCGAGGAGATCTGCC  
GCCGCGATCGCC

ATGGCGGACGTGCTTAGCGTCTGCGACAGTACAACATCCAGAAGAAGGAGATTGTGGTGAAGGGAGACG  
AAGTGATCTTCGGGAGTTCTCCTGGCCCAAGAATGTGAAGACCAACTATGTTGTTGGGGACTGGAAA  
GGAAGGCCAACCCAGAGAGTACTACACATTGGATTCCATTTTATTCTACTTAATAACGTGCACCTTTCT  
CATCCTGTTTATGTCGACGTGCAGTACTGAAAAATTCTGTGGTTAGAAGACCTGATCGAAAAGATC  
TACTTGGATATCTCAATGGTGAAGCGTCAACATCGGCAAGTATAGACAGAAGCGCTCCCTTAGAAATAGG  
TCTTCAGCGATCTACTCAAGTCAAACGAGCTGCAGATGAAGTTTTAGCAGAAGCAAAGAAACCACGAATT  
GAGGATGAAGAGTGTGTGCGCTTGATAAAGAGAGATTGGCTGCCCGTTGGAGGGTCACAAAGAAGGGA  
TTGTACAGACTGAACAGATTAGGTCTTTGTCTGAAGCTATGTCAGTGGAAAAATGCTGCAATCAAAGC  
CAAAATTATGGCTAAGAAAAGATCTACTATCAAGACTGATCTAGATGATGACATAACTGCCCTTAAACAG  
AGGAGTTTTGTGGATGCTGAGGTAGATGTACCCGAGATATTGTCAGCAGAGAGAGAGATGGAGGACAC  
GAACAACATCTTACAAAGCACAGGAAAGAATTTTCCAAGAACATTTTTCGAATCTTCAATCTGTAAA  
AGCCAGAGAAGAAGGGCGTGCACCTGAACAGCGACCTGCCCAATGCAGCACCTGTGGATCCCCTTTG  
CGCACCAAACAGCCTATCCCAGCTGCCTATAACAGATACGATCAGGAAAGATTCAAAGGAAAAGAAGAAA  
CGGAAGGCTTCAAAATTGACACTATGGGAACCTACCATGGTATGACACTGAAATCTGTAACGGAGGGTGC  
ATCTGCCCGGAAGACTCAGACTCCTGCAGCCAGCCAGTACCAAGACCAGTTTCTCAAGCAAGACCTCCC  
CCAAATCAGAAGAAAGGATCTCGAACACCCATTATCATAATTCCTGCAGTACCACCTTTAATAACCA  
TGCTTAATGCAAAAGACCTTCTACAGGACCTGAAATTTGTCCATCAGATGAAAAGAAGAAACAAGGTTG  
TCAACGAGAAAATGAAACTCTAATACAAAGAAGAAAAGACCAGATGCAACCAGGGGGCACTGCAATTAGT  
GTTACAGTACCTTATAGAGTAGTACAGCCCTTAACTTATGCCTCAAGACTGGGACCGCGTTGTAG  
CCGTTTTTGTGCAGGGTCTGCATGGCAGTTCAAAGGTTGGCCATGGCTTTTGCCTGATGGATCACCAGT  
TGATATATTTGCTAAAATTAAGCCTTCCATCTGAAGTATGATGAAGTTCGTCTGGATCCAAATGTTTCA  
AAATGGGATGTAAACAGTATTAGAAGTACAGTATCACAACGTCATTTGGATAGACCAGTGTCTTACGGT  
TTTGGAAACATTGGACAGGTACATGGTAAAGCATAAATCGCACTTGAGATTC

ACGCGTACGCGGCCGCTCGAGCAGAACTCATCTCAGAAGAGGATCTGGCAGCAAATGATATCTGGATT  
ACAAGGATGACGACGATAAGGTTTAA

## Protein Sequence:

>RC209479 protein sequence  
Red=Cloning site Green=Tags(s)

MADVLSVLRQYNIQKKEIVVKGDEIVFGEFSWPKNVKNYVVWGTGKEGQPREYYTLDSILFLNNVHLS  
HPVYVRRRAATENIPVRRPDRKDLLGYLNGEASTSASIDRSAPLEIGLQRSTQVKRAAEVLAEAKKPRI  
EDEECVRLDKERLAARLEGHKEGIVQTEQIRSLSEAMSVEKIAAIKAKIMAKKRSTIKTDLDDITALKQ  
RSFVDAEVDVTRDIVSRERVRTRTTILQSTGKNFSKNIFAILQSVKAREEGRAPEQRPAAPNAAPVDTL  
RTKQPIPAAYNRYDQERFKGKEETEGFKIDTMGTYHGMLKSVTEGASARKTQTPAAQVPRPVSQARPP  
PNQKKSRTPIIIIPAATSLITMLNAKDLLQDLKFPVPSDEKKKQGCQRENELIQRRKQMQPGGTAIS  
VTVPYRVVDQPLKMPQDWRVAVFVQGPWQFKGWPWLLPDGSPVDIFAKIKAFHLKYDEVRLDPNVQ  
KWDVTVLELSYHKRHLDRPVFLRFWETLDRYMKHKSHLRF

TRTRPLEQKLISEEDLAANDILDYKDDDDKV

## Chromatograms:

[https://cdn.origene.com/chromatograms/mk6125\\_g12.zip](https://cdn.origene.com/chromatograms/mk6125_g12.zip)

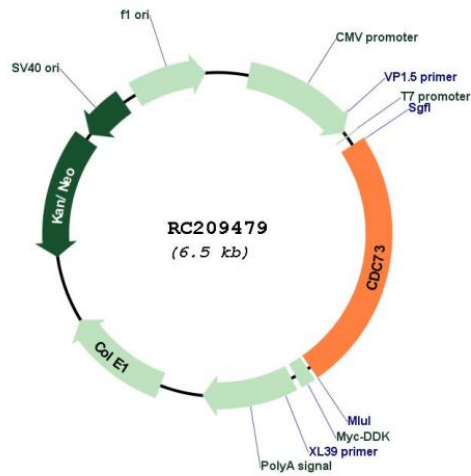
## Restriction Sites:

SgfI-MluI

Cloning Scheme:



Plasmid Map:

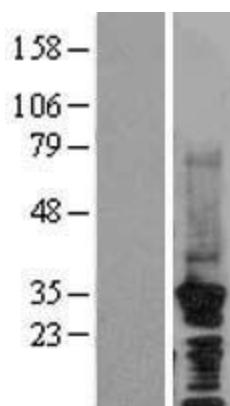


ACCN:

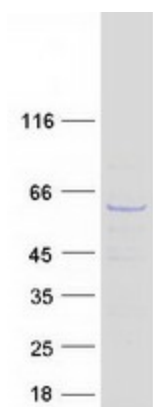
NM\_024529

ORF Size:	1593 bp
OTI Disclaimer:	The molecular sequence of this clone aligns with the gene accession number as a point of reference only. However, individual transcript sequences of the same gene can differ through naturally occurring variations (e.g. polymorphisms), each with its own valid existence. This clone is substantially in agreement with the reference, but a complete review of all prevailing variants is recommended prior to use. <a href="#">More info</a>
OTI Annotation:	This clone was engineered to express the complete ORF with an expression tag. Expression varies depending on the nature of the gene.
RefSeq:	<a href="#">NM_024529.5</a>
RefSeq Size:	5942 bp
RefSeq ORF:	1596 bp
Locus ID:	79577
Domains:	Cdc73
Protein Families:	Druggable Genome
MW:	60.6 kDa
Gene Summary:	This gene encodes a tumor suppressor that is involved in transcriptional and post-transcriptional control pathways. The protein is a component of the the PAF protein complex, which associates with the RNA polymerase II subunit POLR2A and with a histone methyltransferase complex. This protein appears to facilitate the association of 3' mRNA processing factors with actively-transcribed chromatin. Mutations in this gene have been linked to hyperparathyroidism-jaw tumor syndrome, familial isolated hyperparathyroidism, and parathyroid carcinoma. [provided by RefSeq, Jul 2009]

### Product images:



Western blot validation of overexpression lysate (Cat# [LY402998]) using anti-DDK antibody (Cat# [TA50011-100]). Left: Cell lysates from untransfected HEK293T cells; Right: Cell lysates from HEK293T cells transfected with RC209479 using transfection reagent MegaTran 2.0 (Cat# [TT210002]).



Coomassie blue staining of purified CDC73 protein (Cat# [TP309479]). The protein was produced from HEK293T cells transfected with CDC73 cDNA clone (Cat# RC209479) using MegaTran 2.0 (Cat# [TT210002]).