

Product datasheet for **RC209474**

VPS11 (NM_021729) Human Tagged ORF Clone

Product data:

Product Type:	Expression Plasmids
Product Name:	VPS11 (NM_021729) Human Tagged ORF Clone
Tag:	Myc-DDK
Symbol:	VPS11
Synonyms:	END1; HLD12; hVPS11; PEP5; RNF108
Mammalian Cell Selection:	Neomycin
Vector:	pCMV6-Entry (PS100001)
E. coli Selection:	Kanamycin (25 ug/mL)



[View online »](#)

ORF Nucleotide Sequence:

>RC209474 representing NM_021729
 Red=Cloning site Blue=ORF Green=Tags(s)

TTTTGTAATACGACTCACTATAGGGCGGCCGGGAATTCGTCGACTGGATCCGGTACCGAGGAGATCTGCC
 GCC**CGGATCGCC**

ATGGCGCCTACCTGCAGTGGCGCGCTTCGTTTTCTTCGACAAGGAGCTGGTGAAGGAGCCGCTGAGCA
 ATGATGGGGCCGCTCCCGGGCCACACCTGCTTCTGGATCCGCTGCTTCCAAGTTCTTTGCCTCCCTCC
 TGGCATCACTGTCTGCGACTCAGGCCGAGGGAGCCTGGTCTTTGGAGATATGGAAGGCCAGATCTGGTTC
 TTGCCACGTTCCCTACAGCTTACAGGCTTCCAAGCCTACAAACTACGGGTGACACACCTGTACCAACTGA
 AGCAGCACAATATTCTGGCATCTGTTGGAGAAGATGAAGAGGGCATCAACCCCTTGGTTAAGATCTGGAA
 CCTGGAGAAGAGAGATGGTGGCAATCCACTCTGCACTCGAATCTTCCCTGCTATTCCAGGAACAGAGCCA
 ACTGTTGTATCTGTTTGACTGTCCATGAAAATCTCAACTTTATGGCCATTGGTTTCACAGATGGGAGTG
 TTACATTGAACAAAGGAGACATCACCCGGGACCGCATAGCAAGACCCAGATTTTGCACAAGGGCAACTA
 TCCTGTAAGTGGATTGGCCTTTCCGAAGCAGGAAAGACCACTCACTTGTGTTGTGACAACAGAGAAC
 GTCAGTCTATATAGTTTCTGGAAGACTACCTCGCGTGGAGTTGGACACCCATGGTTGGCCTGC
 GCTGCTCAGCCCTAAGTGACCTTCTCAGGACCTGCAGTTCATTGTGGCCGGGATGAGTGTGCTACTT
 GTACCAGCCTGATGAACGTGGGCCCTGCTTCGCTTTGAGGGCCATAAGCTCATTGCCACTGGTTTAGA
 GGCTACCTTATCATTGTCTCCCGTGACCGGAAGGTTTCTCCCAAGTCAGAGTTTACCAGCAGGGATTAC
 AGAGCTCCGACAAGCAGATTCTAAACATCTATGACCTGTGCAACAAGTTCATAGCCTATAGCACCGTCTT
 TGAGGATGTAGTGGATGTGCTTGCTGAGTGGGGCTCCCTGTACGTGCTGACGCGGGATGGGCGGGTCCAC
 GCACTGCAGGAGAAGGACACAGACCAAACTGGAGATGCTGTTAAGAAGAACCATTGAGATGGCGA
 TTAACCTTGCCAAGAGCCAGCATCTGGACAGTGTGGCTGGCCAGATTTTCATGCATATGGAGACCA
 TCTCTACAGCAAGGGCAACCACGATGGGGCTGTCCAGCAATATATCCGAACCATTTGGAAAGTTGGAGCCA
 TCCTACGTGATCCGCAAGTTTCTGGATGCCAGCGCATTCAACCTGACTGCCTACCTGCAGACCTGC
 ACCGACAATCCCTGGCCAATGCCAGCATAACCACCCTGCTCCTCAACTGCTATACCAAGCTCAAGGACAG
 CTCGAAGCTGGAGGATTTCATCAAGAAAAAGAGTGAAGTGAAGTCCACTTTGATGTGGAGACAGCCATC
 AAGGTCTCCGGCAGGCTGGCTACTACTCCCATGCCCTGTATCTGGCGGAGAACCATGCACATCATGAGT
 GGTACCTGAAGATCCAGCTAGAAGACATTAAGAATTATCAGGAAGCCCTTCGATACATCGGCAAGCTGCC
 TTTTGAGCAGGCAGAGAGCAACATGAAGCGCTACGGCAAGATCCTCATGCACCACATACCAGAGCAGACA
 ACTCAGTTGCTGAAGGGACTTTGTACTGATTATCGGCCAGCCTCGAAGGCCGACGAGATAGGGAGGCC
 CAGGCTGCAGGGCAACTCTGAGGAGTTTATCCCATCTTTGCCAATAACCCGCGAGAGCTGAAAGCCTT
 CCTAGAGCACATGAGTGAAGTGACGACACTCACCCAGGGGATCTACGACACACTCCTTGAGCTGCGA
 CTGCAGAACTGGGCCACGAGAAGGATCCACAGGTCAAAGAGAAGCTTACGCGAGAGGCCATTTCCCTGC
 TGAAGAGTGGTCGCTTCTGTGACGTCTTGTGACAAGGCCCTGGTCTGTGCCAGATGCACGACTTCCAGGA
 TGGTGTCTTTACCTTTATGAGCAGGGGAAGCTGTTCCAGCAGATCATGCACTACCACATGCAGCAGGAG
 CAGTACCGGCAGGTCATCAGCGTGTGTGAGCGCCATGGGAGCAGGACCCCTCCTGTGGGAGCAGGCC
 TCAGTACTTCGCTCGCAAGGAGGAGGACTGCAAGGAGTATGTGGCAGCTGTCTCAAGCATATCGAGAA
 CAAGAACCTCATGCCACCTTTCTAGTGGTGCAGACCCTGGCCCAACTCCACAGCCACACTCCTCGTGC
 ATCAGGGACTACCTGGTCCAAAACTACAGAAACAGAGCCAGCAGATTGCACAGGATGAGCTGCGGGTGC
 GGCGGTACCGAGAGGAGACCACCCGTATCCGCCAGGAGATCCAAGAGCTCAAGGCCAGTCTTAAGATTTT
 CCAAAAGACCAAGTGCAGCATCTGTAACAGTGCCTTGGAGTTGCCCTCAGTCCACTTCTGTGTGGCCAC
 TCCTTCCACCAACTGCTTTGAGAGTTACTCGGAAAGTGTGCTGACTGCCCCACTGCCTCCCTGAAA
 ACCGGAAGGTCATGGATATGATCCGGGCCAGGAACAGAAACGAGATCTCCATGATCAATCCAGCATCA
 GCTCAGGTGCTCAATGACAGCTTTTCTGTGATTGCTGACTACTTTGGCAGAGGTGTTTTCAACAAATTG
 ACTCTGCTGACCGACCTCCACAGCCAGACTGACCTCCAGCCTGGAGGCTGGGCTGCAACGCGACCTAC
 TCATGCACTCCAGGAGGGCACT

ACGCGTACGCGGCCGCTCGAGCAGAAACTCATCTCAGAAGAGGATCTGGCAGCAAATGATATCCTGGATT
 ACAAGGATGACGACGATAAGGTTTAA

Protein Sequence: >RC209474 representing NM_021729
 Red=Cloning site Green=Tags(s)

```

MAAYLQWRRFVFFDKELVKEPLSNDGAAPGATPASGSAASKFLCLPPGITVCDSSGRGSLVFGDMEGQIWF
LPRSLQLTGFQAYKLRVTHLYQLKQHNILASVGEDEEGINPLVKIWNLEKRDGGNPLCTRIFPAIPGTEP
TVVSLTVHENLNFMAIGFTDGSVTLNKGDI TRDRHKTQILHKGNYPTGLAFRQAGKTTHL FVVTTEN
VQSYIVSGKDYPRVELDTHGGLRCSALSDPSQDLQFIVAGDECVYLYQPDERGPCFAFEGHKLIAHWFR
GYLIIVSRDRKVSFKSEFTSRDSQSSDKQILNIYDLCKNFIAYSTVFEDVVDVLAEWGSLYVLRDGRVH
ALQEKDQTQKLEMLFKKNLFEMAINLAKSQHLDSGLAQIFMQYGDHLYSKGNHDGAVQQYIRTIGKLEP
SYVIRKFLDAQRIHNL TAYLQTLHRQSLANADHTLLLNLCYTKLKDSSKLEEFIKKSESEVHFDVETAI
KVL RQAGYYSHALYLAENHAHHEWYLKIQLEDIKNYQEALRYIGKLPFEQAESNMKRYGKILMHHIPEQT
TQLLKGLCTDYRPSLEGRSDREAPGCRANSEEFIPIFANNPRELKAFLEHMSEVQPDSPQGIYDTLLELR
LQNWAEHKDPQVKEKLHAEATISLLKSGRFCDVFDKALVLCQMDFQDGLVLYEQGKLFQQIMHYHMQHE
QYRQVIVS C ERHGEQDPSLWEQALSYFARKEEDCKEYVA AVLKHIENKNLMPPLL VVQTLAHNSTATLSV
IRDYLVQK LQKQSQQIAQDELVR RRYREETTRIRQEI QELKASPKIFQKTKCSICNSALELPSVHFLCGH
SFHQHCFESYSESDADCP TCLPENRKVMDMIRAQEQKRDLDHDFQHQLRCSNDSFSVIADYFGRGVFNKL
TLLTDPPTARLTSSLEAGLQRD LLMHSRRGT
  
```

TRTRPLEQKLISEEDLAANDILDYKDDDDKV

Chromatograms: https://cdn.origene.com/chromatograms/mg3164_h02.zip

Restriction Sites: SgfI-MluI

Cloning Scheme:

Cloning sites used for ORF Shuttling:



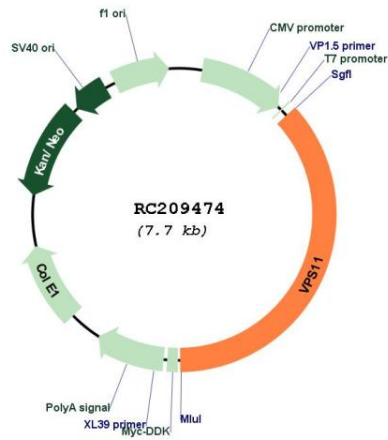
* The last codon before the Stop codon of the ORF

ACCN: NM_021729

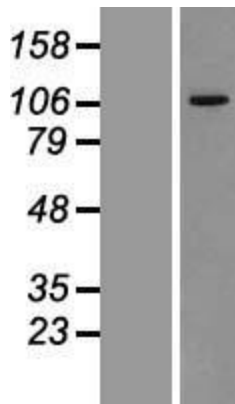
ORF Size: 2823 bp

OTI Disclaimer:	The molecular sequence of this clone aligns with the gene accession number as a point of reference only. However, individual transcript sequences of the same gene can differ through naturally occurring variations (e.g. polymorphisms), each with its own valid existence. This clone is substantially in agreement with the reference, but a complete review of all prevailing variants is recommended prior to use. More info
OTI Annotation:	This clone was engineered to express the complete ORF with an expression tag. Expression varies depending on the nature of the gene.
Components:	The ORF clone is ion-exchange column purified and shipped in a 2D barcoded Matrix tube containing 10ug of transfection-ready, dried plasmid DNA (reconstitute with 100 ul of water).
Reconstitution Method:	<ol style="list-style-type: none"> 1. Centrifuge at 5,000xg for 5min. 2. Carefully open the tube and add 100ul of sterile water to dissolve the DNA. 3. Close the tube and incubate for 10 minutes at room temperature. 4. Briefly vortex the tube and then do a quick spin (less than 5000xg) to concentrate the liquid at the bottom. 5. Store the suspended plasmid at -20°C. The DNA is stable for at least one year from date of shipping when stored at -20°C.
RefSeq:	NM_021729.6
RefSeq Size:	3279 bp
RefSeq ORF:	2826 bp
Locus ID:	55823
UniProt ID:	Q9H270
Cytogenetics:	11q23.3
Domains:	Clathrin, RING
Protein Families:	Druggable Genome
MW:	107.6 kDa
Gene Summary:	Vesicle mediated protein sorting plays an important role in segregation of intracellular molecules into distinct organelles. Genetic studies in yeast have identified more than 40 vacuolar protein sorting (VPS) genes involved in vesicle transport to vacuoles. This gene encodes the human homolog of yeast class C Vps11 protein. The mammalian class C Vps proteins are predominantly associated with late endosomes/lysosomes, and like their yeast counterparts, may mediate vesicle trafficking steps in the endosome/lysosome pathway. Alternative splicing results in multiple transcript variants. [provided by RefSeq, Feb 2014]

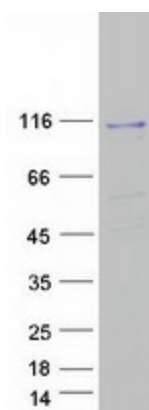
Product images:



Circular map for RC209474



Western blot validation of overexpression lysate (Cat# [LY411947]) using anti-DDK antibody (Cat# [TA50011-100]). Left: Cell lysates from untransfected HEK293T cells; Right: Cell lysates from HEK293T cells transfected with RC209474 using transfection reagent MegaTran 2.0 (Cat# [TT210002]).



Coomassie blue staining of purified VPS11 protein (Cat# [TP309474]). The protein was produced from HEK293T cells transfected with VPS11 cDNA clone (Cat# RC209474) using MegaTran 2.0 (Cat# [TT210002]).