

Product datasheet for RC209468

SIRPG (NM_018556) Human Tagged ORF Clone

Product data:

Product Type:	Expression Plasmids
Product Name:	SIRPG (NM_018556) Human Tagged ORF Clone
Tag:	Myc-DDK
Symbol:	SIRPG
Synonyms:	bA77C3.1; CD172g; SIRP-B2; SIRPB2; SIRPgamma
Mammalian Cell Selection:	Neomycin
Vector:	pCMV6-Entry (PS100001)
E. coli Selection:	Kanamycin (25 ug/mL)
ORF Nucleotide Sequence:	>RC209468 ORF sequence Red=Cloning site Blue=ORF Green=Tags(s)

TTTTGTAATACGACTCACTATAGGGCGCCGGGAATTCGTCGACTGGATCCGGTACCGAGGAGATCTGCC
GCC**CGATCGCC**

ATGCTGTCCCAGCCTCCTGGCCCCATCCTCCTGGTCCTTCTGCTTCTGACTCTACTGCTGGGACTTA
CAGAAGTGGCAGGTGAGGAGGAGCTACAGATGATTCAGCCTGAGAAGCTCCTGTTGGTCACAGTTGGAAA
GACAGCCACTCTGACTGCACTGTGACCTCCCTGCTTCCCGTGGGACCCGTCCTGTGGTTCAGAGGAGTT
GGACCAGGCCGGGAATTAATCTACAATCAAAAAGAAGGCCACTTCCCAGGGTAACAACAGTTTCAGACC
TCACAAAGAGAAACAACATGGACTTTTCCATCCGCATCAGTAGCATCACCCAGCAGATGTCGGCACATA
CTACTGTGTGAAGTTTCGAAAAGGGAGCCCTGAGAACGTGGAGTTAAGTCTGGACCAGGCACTGAGATG
GCTTTGGGTGCCAAACCCTCTGCCCCCGTGGTATTGGGCCCTGCGGCGAGGACCACACCTGAGCATAACAG
TGAGTTTCACCTGTGAGTCCCATGGCTTCTCTCCAGAGACATCACCCGAAATGGTTCAAAAATGGGAA
TGAGCTCTCAGACTTCCAGACCAACGTGGACCCACAGGACAGAGTGTGGCCTACAGCATCCGCAGCACA
GCCAGGGTGGTACTGGACCCCTGGGACGTTTCGCTCTCAGGTCATCTGCGAGGTGGCCCATGTACCTTGC
AGGGGGACCCTCTTCGTGGGACTGCCAATTGTCTGAGGCCATCCGAGTCCACCCACCTTGAGGTTAC
TCAACAGCCCATGAGGGTGGGAACAGGTAACGTCACCTGCCAGGTGAGGAAGTCTACCCCCAGAGC
CTACAGCTGACCTGGTCGAGAATGGAACGTTGCCAGAGAGAAACAGCCTCGACCCCTACAGAGAACA
AGGATGGTACCTACAACCTGGACAAGCTGGTTCCTGGTGAACATATCTGACCAAAGGGATGATGTGGTCT
CACCTGCCAGGTGAAGCATGATGGGAGCTGGCGGTCAGCAAACGCCCTTGCCTAGAGGTACAGTCCAC
CAGAAGGACCAGAGCTCAGATGCTACCCCTGGCCCGGCATCATCTCTTACTGCGCTGCTCCTCATAGCTG
TCCTCCTGGGCCCATCTATGTCCCTGGAAGCAGAAGACC

ACGGTACGGGCCGCTCGAGCAGAACTCATCTCAGAAGAGGATCTGGCAGCAATGATATCCTGGATT
ACAAGGATGACGACGATAAGGTTTAA



[View online >](#)

Protein Sequence: >RC209468 protein sequence
Red=Cloning site Green=Tags(s)

MPVPASWPHPPGPFLLLLLLLLLGLTEVAGEEELQMIQPEKLLLVTVGKTATLHCTVTSLLPVGPVLWFRGV
 GPGRELIYNQKEGHFPRVTTVSDLTKRNNMDFSIRISSITPADVGTYYCVKFRKGSPEVFEKSGPGTEM
 ALGAKPSAPVVLGPAARTTPEHTVSFTCESHGFSRPRDITLKWFKNGNELSDFQTNVDPTGQSVAYSIRST
 ARVVLDPWDVRSQVICEVAHVTLQGDPLRGTANLSEAIRVPPTLEVTTQQPMRVGNQVNVTCQVRKFYPQS
 LQLTWSSENGVNCQRETASTLTENKDGTYNWTSWFLVNIISDQRDDVVLTCQVKHGDQLAVSKRLALEVTVH
 QKDQSSDATPGPASSLTALLLIIVLLGPIYVPWKQKT

TRTRPLEQKLISEEDLAANDILDYKDDDDKV

Chromatograms: https://cdn.origene.com/chromatograms/mk6524_d05.zip

Restriction Sites: SgfI-MluI

Cloning Scheme:



ACCN: NM_018556

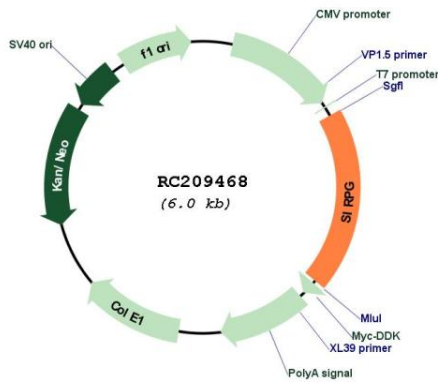
ORF Size: 1161 bp

OTI Disclaimer: Due to the inherent nature of this plasmid, standard methods to replicate additional amounts of DNA in *E. coli* are highly likely to result in mutations and/or rearrangements. Therefore, OriGene does not guarantee the capability to replicate this plasmid DNA. Additional amounts of DNA can be purchased from OriGene with batch-specific, full-sequence verification at a reduced cost. Please contact our customer care team at custsupport@origene.com or by calling 301.340.3188 option 3 for pricing and delivery.

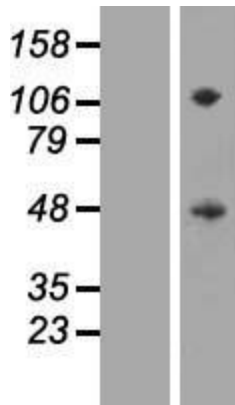
The molecular sequence of this clone aligns with the gene accession number as a point of reference only. However, individual transcript sequences of the same gene can differ through naturally occurring variations (e.g. polymorphisms), each with its own valid existence. This clone is substantially in agreement with the reference, but a complete review of all prevailing variants is recommended prior to use. [More info](#)

OTI Annotation:	This clone was engineered to express the complete ORF with an expression tag. Expression varies depending on the nature of the gene.
Components:	The ORF clone is ion-exchange column purified and shipped in a 2D barcoded Matrix tube containing 10ug of transfection-ready, dried plasmid DNA (reconstitute with 100 ul of water).
Reconstitution Method:	<ol style="list-style-type: none">1. Centrifuge at 5,000xg for 5min.2. Carefully open the tube and add 100ul of sterile water to dissolve the DNA.3. Close the tube and incubate for 10 minutes at room temperature.4. Briefly vortex the tube and then do a quick spin (less than 5000xg) to concentrate the liquid at the bottom.5. Store the suspended plasmid at -20°C. The DNA is stable for at least one year from date of shipping when stored at -20°C.
RefSeq:	NM_018556.3 , NP_061026.2
RefSeq Size:	1720 bp
RefSeq ORF:	1164 bp
Locus ID:	55423
UniProt ID:	Q9P1W8
Cytogenetics:	20p13
Protein Families:	Druggable Genome, Transmembrane
MW:	42.5 kDa
Gene Summary:	The protein encoded by this gene is a member of the signal-regulatory protein (SIRP) family, and also belongs to the immunoglobulin superfamily. SIRP family members are receptor-type transmembrane glycoproteins known to be involved in the negative regulation of receptor tyrosine kinase-coupled signaling processes. Alternatively spliced transcript variants encoding different isoforms have been described. [provided by RefSeq, Jul 2008]

Product images:



Circular map for RC209468



Western blot validation of overexpression lysate (Cat# [LY413008]) using anti-DDK antibody (Cat# [TA50011-100]). Left: Cell lysates from untransfected HEK293T cells; Right: Cell lysates from HEK293T cells transfected with RC209468 using transfection reagent MegaTran 2.0 (Cat# [TT210002]).