

## Product datasheet for **RC209467**

### TCTN1 (NM\_001082537) Human Tagged ORF Clone

#### Product data:

Product Type:	Expression Plasmids
Product Name:	TCTN1 (NM_001082537) Human Tagged ORF Clone
Tag:	Myc-DDK
Symbol:	TCTN1
Synonyms:	JBTS13; TECT1
Mammalian Cell Selection:	Neomycin
Vector:	pCMV6-Entry (PS100001)
E. coli Selection:	Kanamycin (25 ug/mL)



[View online »](#)

**ORF Nucleotide Sequence:**

>RC209467 ORF sequence  
 Red=Cloning site Blue=ORF Green=Tags(s)

TTTTGTAATACGACTCACTATAGGGCGGCCGGAATTCGTCGACTGGATCCGGTACCGAGGAGATCTGCC  
 GCC**CGGATCGCC**

ATGAGGCCGCGAGGTCTCCCGCCGCTCCTGGTGGTGTCTCTGGGCTGCTGGCCCTCCGTGAGCGCCAGAC  
 CCGATGCCACCCCGCGGTGACGACAGAGGGCCTCAACTCCACCGAGGCAGCCCTGGCCACCTTCGGAAC  
 TTTCCCGTCGACCAGGCCCCCGGGACTCCAGGGCTCCAGGGCCCTCCTCCGGCCCCAGGCCTACCCCA  
 GTCACGGACGTTGCTGTTCTCTGTGTGTGACTTATCCCGACACAGTGTGACATCAACTGCTGTGTG  
 ATCCCGACTGCAGCTCCGTGGATTTTCAGTGTCTTTTCTGCCTGCTCAGTTCAGTTGTCACGGGCGACG  
 CCAGTTTTGTAGTCAAAAAGCAGTCATCTATTCATTGAATTTTACAGCAAACCCACCTCAAAGAGTATTT  
 GAACTTGTGACCAGATTAATCCATCTATTTCTGCATTCATATTACAACTATAAACCTGCATTATCCT  
 TTATTAATCCAGAAGTACCTGATGAAAACAATTTTATACATTGATGAAAACATCTGATGGTTTTACATT  
 GAATGCTGAATCATATGTTTCTTCAACCAAACTGGATATTCCTACTGCTGCTAAATATGAGTATGGG  
 GTTCTCTGCAGACTTCAGATTCGTTTCTGAGATTTCTTCGTCCTGACATCATCTCTGTGCAGTATA  
 ATAACCTGCAGCGTTTCTGGTGAACAGGCTGTTAAGTGCACCAGAAAAATAAATTTAGAACAGTGTGA  
 AGAAATGAAGCCCTCAGCATGGCTTTTACAGCAGCCCGAAATTTCTGAGGGTACCTGATTCAAGAAAA  
 AAGGTCCTATCACTGTTTCAGTCCATCGTCATTAGTCTCTAAATAAAACGCTCACCCGACGGGAGGACA  
 CTGATGTGCTGCAGCCGACTCTCGTCAACGCTGGACACTTAGCCTTTCGCGTGAATGTTGTTCTTGAGGT  
 AAAGTACAGCCTCACATACAGATGCAGGTGAAGTCAACAAAGCTGATCTCTCATTGTTCTGGGGACA  
 GTTAGCAGCGTAGTGGTCCCAGTGCAGCAAAAGTTTGAATTCATTTTCTCAGGAAAAACCCAGCCAG  
 TCCCTCTCAGTGGAAACCTGGTTATGTCGTGGGGCTCCATTAGCTGCTGGATTCCAGCCTCATAAGGG  
 GTCTGGGATTATTCAGACCACAAATAGATATGGACAGTCTACTATTCTTCATAGCACAACTGAGCAAGAC  
 TGCTTAGCACTGGAGGGGTCCGGACCCAGTATTATTTGGTTACTATGCAATCTGGCTGTAACATAA  
 GACTGACTGGAGCTCTCCCGTGCAGCTCGTAGCACAGAAGTGAAGAGCCTGCTGTGGGGCCAGGGCTT  
 CCCAGATTACGTGGCCCTTTTGGAAATCCCAGGCCAGGACATGCTGGACTGGGTGCCATCCACTTC  
 ATCACCAGTCAATCAACAGGAAGGATTCCTGCCAGCTCCAGGGGCTTTGGTTATAGAAGTGAAGTGA  
 CTAATAACGGATCCCTGCTGAATCCACAGGCCAAAATAGTCAATGTAAGTCAAACTAATTTATCCTC  
 CTTTCTGAGGCCAACTCAGAAATGAAAGGACGATTCTATTTCCACTGCGGTTACTTTTGTGGATGTG  
 TCTGCACCTGCAGAGGCAGGCTTCAGAGCTCCACCAGCCATCAATGCCAGGCTGCCCTTTAACTTCTCT  
 TCCCGTTTGT

**ACGCGT**ACGCGGCCGCTCGAGCAGAACTCATCTCAGAAGAGGATCTGGCAGCAAATGATATCCTGGATT  
 ACAAGGATGACGACGATAAGGTTTAA

**Protein Sequence:**

>RC209467 protein sequence  
 Red=Cloning site Green=Tags(s)

MRPRGLPPLLVLVLLGCWASVSAQTDATPAVTTEGLNSTEALATFGTFPSTRPPGTPRAPGPSSGPRPTP  
 VTDVAVLCVCDLSPAQCDCINCCDPDCSSVDFSVFSACSVPVVTGDSQFCSQKAVIYSLNFTANPPQRVF  
 ELVDQINPSIFCIHITNYKPAISFINPEVPDENNFDTLMKTSDFTLNAESYVSFTTKLDIPTAAKYEYG  
 VPLQTSDFSFLRFPSLSTSLCTDNPAFLVNQAVKCTRKINLEQCEEIEALSMFYSSPEILRVPDSRK  
 KVPITVQSIVIQSLNKTLTRREDTDLQPTLVNAGHFLCVNVVLEVKYSLTYTDAGEVTKADLSFVLGT  
 VSSVVVPLQQKFEIHFLQENTQPVPLSGNPGYVGLPLAAGFQPHKSGSIQTTNRYGQLTILHSTTEQD  
 CLALEGVRTPVLFGYTMQSGCKLRLTGALPCQLVAQKVKSLWQGFDPDYVAPFGNSQAQDMLDWVPIHF  
 ITQSFNRKDSCQLPGALVIEVKWTKYGSLLNPQAKIVNVTANLISSSFPEANSGNERTILISTAVTFVDV  
 SAPAEAGFRAPPAINARLPFNFFPFV

**TR**TRPLEQKLISEEDLAANDILDYKDDDDKV

**Chromatograms:**

[https://cdn.origene.com/chromatograms/mk6727\\_b03.zip](https://cdn.origene.com/chromatograms/mk6727_b03.zip)

Restriction Sites: SgfI-MluI

Cloning Scheme:



ACCN: NM\_001082537

ORF Size: 1761 bp

OTI Disclaimer: The molecular sequence of this clone aligns with the gene accession number as a point of reference only. However, individual transcript sequences of the same gene can differ through naturally occurring variations (e.g. polymorphisms), each with its own valid existence. This clone is substantially in agreement with the reference, but a complete review of all prevailing variants is recommended prior to use. [More info](#)

OTI Annotation: This clone was engineered to express the complete ORF with an expression tag. Expression varies depending on the nature of the gene.

Components: The ORF clone is ion-exchange column purified and shipped in a 2D barcoded Matrix tube containing 10ug of transfection-ready, dried plasmid DNA (reconstitute with 100 ul of water).

- Reconstitution Method:
1. Centrifuge at 5,000xg for 5min.
  2. Carefully open the tube and add 100ul of sterile water to dissolve the DNA.
  3. Close the tube and incubate for 10 minutes at room temperature.
  4. Briefly vortex the tube and then do a quick spin (less than 5000xg) to concentrate the liquid at the bottom.
  5. Store the suspended plasmid at -20°C. The DNA is stable for at least one year from date of shipping when stored at -20°C.

RefSeq: [NM\\_001082537.3](#)

RefSeq Size: 2025 bp

RefSeq ORF: 1764 bp

Locus ID: 79600

UniProt ID: [Q2MV58](#)

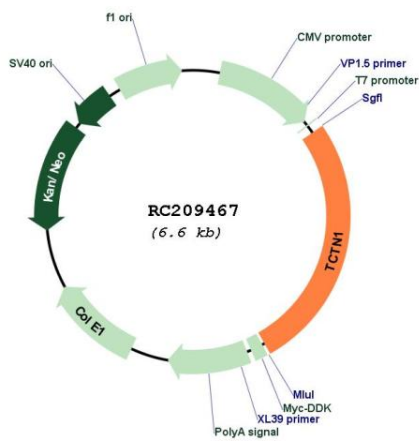
Cytogenetics: 12q24.11

Protein Families: Secreted Protein

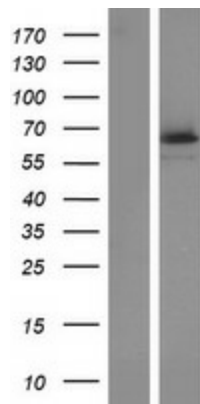
MW: 63.6 kDa

**Gene Summary:** This gene encodes a member of a family of secreted and transmembrane proteins. The orthologous gene in mouse functions downstream of smoothed and rab23 to modulate hedgehog signal transduction. This protein is a component of the tectonic-like complex, which forms a barrier between the ciliary axoneme and the basal body. A mutation in this gene was found in a family with Joubert syndrome-13. Alternative splicing results in multiple transcript variants. [provided by RefSeq, Feb 2016]

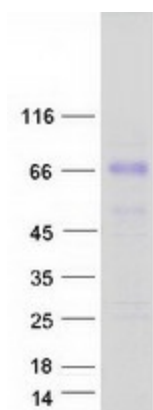
**Product images:**



Circular map for RC209467



Western blot validation of overexpression lysate (Cat# [LY421188]) using anti-DDK antibody (Cat# [TA50011-100]). Left: Cell lysates from untransfected HEK293T cells; Right: Cell lysates from HEK293T cells transfected with RC209467 using transfection reagent MegaTran 2.0 (Cat# [TT210002]).



Coomassie blue staining of purified TCTN1 protein (Cat# [TP309467]). The protein was produced from HEK293T cells transfected with TCTN1 cDNA clone (Cat# RC209467) using MegaTran 2.0 (Cat# [TT210002]).