

## Product datasheet for **RC209463**

### SLC39A4 (NM\_130849) Human Tagged ORF Clone

#### Product data:

Product Type:	Expression Plasmids
Product Name:	SLC39A4 (NM_130849) Human Tagged ORF Clone
Tag:	Myc-DDK
Symbol:	SLC39A4
Synonyms:	AEZ; AWMS2; ZIP4
Mammalian Cell Selection:	Neomycin
Vector:	pCMV6-Entry (PS100001)
E. coli Selection:	Kanamycin (25 ug/mL)



[View online »](#)

ORF Nucleotide  
Sequence:

>RC209463 ORF sequence  
 Red=Cloning site Blue=ORF Green=Tags(s)

TTTTGTAATACGACTCACTATAGGGCGGCCGGAATTCGTCGACTGGATCCGGTACCGAGGAGATCTGCC  
 GCCCGCATCGCC

ATGGCGTCCCTGGTCTCGCTGGAGCTGGGGCTGCTTCTGGCTGTGCTGGTGGTGACGGCGACGGCGTCCC  
 CGCCTGCTGGTCTGCTGAGCCTGCTCACCTCTGGCCAGGGCGCTCTGGATCAAGAGGCTCTGGGCGGCCT  
 GTTAAATACGCTGGCGGACCGTGTGCACTGCACCAACGGGCCGTGTGAAAGTGCCTGTCTGTGGAGGAC  
 GCCCTGGGCTGGGCGAGCCTGAGGGTTCAGGGCTGCCCGGGCCCGGTCTGGAGGCCAGGTACGTGCG  
 CCCGCTCAGTGGCGCCCGCTCTGTACCTCAGCAACCCGAGGGCACCTGTGAGGACACTCGGGCTGG  
 CCTCTGGGCTCTCATGCAGACCACCTCTGGCCCTGCTCGAGAGCCCCAAGGCCCTGACCCGGGCTG  
 AGCTGGTCTGTCAGAGGATGCAGGCCCGGGTCCCGCCAGACCCCAAGACGGCTGCGTAGATATCC  
 CTCAGCTGCTGGAGGAGCGGTGGGGCGGGGCTCCGGCAGTCTGGCGGCTCTGGCTGCCCTGCT  
 GGACCATGTCAGGAGCGGTCTTGTCCACGCCCTGCCGAGCCCTCAGTACTTCGTGGACTTTGTGTT  
 CAGCAGCACAGCAGCGAGTCCCTATGACGCTGGCCGAGCTGTCAGCCTTGATGCAGCGCTGGGGTGG  
 GCAGGGAGGCCACAGTACCACAGTATCGGCACAGGGGAGCCAGCAGCCGGGACCTGTGCCCTCAT  
 CAGCTCCAGAACAGCTCCAGTGTGTGGACACGGTATGCCTGAGTGCCAGGGACGTGATGGCTGCATAT  
 GGACTGTCCGAACAGGCTGGGGTACCCCGGAGGCTGGGCCAACTGAGCCCTGCCCTGCTCCAACAGC  
 AGCTGAGTGGAGCCTGCACCTCCAGTCCAGGCCCCCGTCCAGGACCAGCTCAGCCAGTCAAGAGGTA  
 TCTGTACGGCTCCCTGGCCAGCTGCTCATCTGCCTCTGCGCGGTCTTTGGCTCCTGCTGCTGACTGC  
 ACTGGCTGCAGGGGGTCACTCACTACATCCTGCAGACCTTCTGAGCCTGGCAGTGGGTGCACTCACTG  
 GGACGCTGTCTGCATCTGACGCCAAGGTGCTGGGGCTGCATACACACAGCAAGAGGGCTCAGCCC  
 ACAGCCACCTGGCGCCTCCTGGCTATGCTGGCCGGGCTACGCCTTCTTCTGTTGAGAACCTCTTC  
 AATCTCCTGCTGCCAGGACCCGGAGGACCTGGAGGACGGCCCTGCGGCCACAGCAGCCATAGCCACG  
 GGGCCACAGCCACGGTGTGTCCCTGCAGCTGGCACCCAGCGAGCTCCGGCAGCCCAAGCCCCCAGCA  
 GGGCTCCCGCGCAGACCTGGTGGCGGAGGAGCCCGGAGCTGCTGAACCCTGAGCCAGGAGACTGAGC  
 CCAGAGTTGAGGCTACTGCCCTATATGATCACTCTGGGCGACGCCGTGCACAACCTCGCCGACGGGCTGG  
 CCGTGGGCGCCGCTTCGCTCCTCCTGGAAGACCGGGTGGCCACCTCGCTGGCCGTGTTCTGCCACGA  
 GTTGCCACACGAGCTGGGGACTTCGCCGCTTGTGTCACGCGGGGCTGTCGGTGGCCAAAGCACTGCTG  
 CTGAACCTGGCCTCCGCGCTCACGGCTTCGCTGGTCTCTACGTGGCACTCGCGGTTGGAGTCAGCGAGG  
 AGAGCGAGGCTGGATCCTGGCAGTGGCACCCGGCCTGTTCTCTACGTAGCACTCTGCGACATGCTCCC  
 GCGGATGTTGAAAGTACGGGACCCGCGGCCCTGGCTCCTTCTCCTGCTGCACAACGTGGGCTGCTGGG  
 GGCTGGACCGTCTGCTGCTGCTCCCTGTACGAGGATGACATCACCTC

ACGCGTACGCGGCCGCTCGAGCAGAACTCATCTCAGAAGAGGATCTGGCAGCAATGATATCCTGGATT  
 ACAAGGATGACGACGATAAGGTTTAA

**Protein Sequence:** >RC209463 protein sequence  
Red=Cloning site Green=Tags(s)

MASLVSLELGLLLAVLVVTATASPPAGLLSLLTSGQGALDQEALGGLNLTADR VHCTNGPCGKCLSVED  
 ALGLGEPEGSGLPPGPVLEARYVARLSAAAVLYLSNPEGTCDTRAGLWASHADHLLALLESPKALTPGL  
 SWLLQRMQARAAGQTPKTACVDIPQLLEEAVGAGAPGSAGGVLAALLDHVRS GSCFHALPSQYFVDFVF  
 QQHSSEVPMTLAEALSALMQRLGVGREAHSDHSHRHRGASSRDPVPLISSNSSSSVWDTVCL SARDVMAAY  
 GLSEQAGVTPEAWAQLSPALLQQQLSGACTSQSRPPVQDQLSQSERYLYGSLATLLIICLCAVFG LLLLTC  
 TGCRGVTHYILQTFLLAVGALTGDAVLHLTPKVLGLHTHSEGLSPQPTWRLLAMLAGLYAFFLFENLF  
 NLLLPDPEDLEDGPCGHSSSHSGHSHGVSLQLAPSELRQPKPPHEGSRADLVAEESPELLNPEPRRLS  
 PELRLLPYMITLGDVAHNFADGLAVGAFASSWKTGLATSLAVFCHELPHELGDFAALLHAGLSVRQALL  
 LNLASALTAFAGLYVALAVGVSESEAWILAVATGLFLYVALCDMLPAMLKVRDPRPWLLFLLHNVGLLG  
 GWTVLLLLSLYEDDITF

TRTRPLEQKLISEEDLAANDILDYKDDDDKV

**Restriction Sites:**

SgfI-MluI

**Cloning Scheme:**



**ACCN:** NM\_130849

**ORF Size:** 1941 bp

**OTI Disclaimer:** The molecular sequence of this clone aligns with the gene accession number as a point of reference only. However, individual transcript sequences of the same gene can differ through naturally occurring variations (e.g. polymorphisms), each with its own valid existence. This clone is substantially in agreement with the reference, but a complete review of all prevailing variants is recommended prior to use. [More info](#)

**OTI Annotation:** This clone was engineered to express the complete ORF with an expression tag. Expression varies depending on the nature of the gene.

**Components:** The ORF clone is ion-exchange column purified and shipped in a 2D barcoded Matrix tube containing 10ug of transfection-ready, dried plasmid DNA (reconstitute with 100 ul of water).

**Reconstitution Method:**

1. Centrifuge at 5,000xg for 5min.
2. Carefully open the tube and add 100ul of sterile water to dissolve the DNA.
3. Close the tube and incubate for 10 minutes at room temperature.
4. Briefly vortex the tube and then do a quick spin (less than 5000xg) to concentrate the liquid at the bottom.
5. Store the suspended plasmid at -20°C. The DNA is stable for at least one year from date of shipping when stored at -20°C.

**RefSeq:** [NM\\_130849.4](#)

**RefSeq Size:** 2198 bp

**RefSeq ORF:** 1944 bp

**Locus ID:** 55630

**UniProt ID:** [Q6P5W5](#)

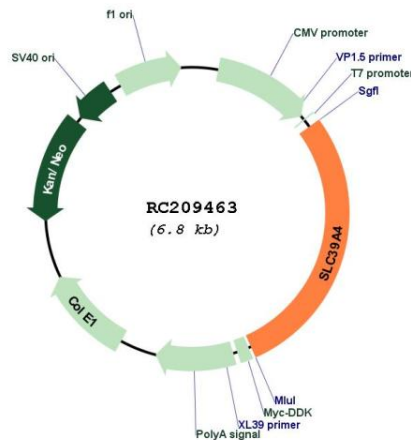
**Cytogenetics:** 8q24.3

**Protein Families:** Transmembrane

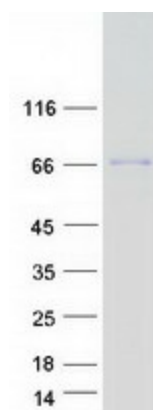
**MW:** 68.5 kDa

**Gene Summary:** This gene encodes a member of the zinc/iron-regulated transporter-like protein (ZIP) family. The encoded protein localizes to cell membranes and is required for zinc uptake in the intestine. Mutations in this gene result in acrodermatitis enteropathica. Multiple transcript variants encoding different isoforms have been found for this gene. [provided by RefSeq, Jul 2013]

### Product images:



Circular map for RC209463



Coomassie blue staining of purified SLC39A4 protein (Cat# [TP309463]). The protein was produced from HEK293T cells transfected with SLC39A4 cDNA clone (Cat# RC209463) using MegaTran 2.0 (Cat# [TT210002]).