

## Product datasheet for **RC209457**

### **GTPBP2 (NM\_019096) Human Tagged ORF Clone**

#### **Product data:**

Product Type:	Expression Plasmids
Product Name:	GTPBP2 (NM_019096) Human Tagged ORF Clone
Tag:	Myc-DDK
Symbol:	GTPBP2
Synonyms:	JABELS
Mammalian Cell Selection:	Neomycin
Vector:	pCMV6-Entry (PS100001)
E. coli Selection:	Kanamycin (25 ug/mL)



[View online »](#)

**ORF Nucleotide Sequence:**

>RC209457 ORF sequence  
 Red=Cloning site Blue=ORF Green=Tags(s)

TTTTGTAATACGACTCACTATAGGGCGGCCGGGAATTCGTCGACTGGATCCGGTACCGAGGAGATCTGCC  
 GCC**CGGATCGCC**

ATGGACTCGCGGGTATCGGAGCTGTTGCGCGGCTGCTGCCGGCCCGGAGGGGGCCCGGCCGTGGCGGAA  
 CCCTCAAGGCTAGGGGGCCGGCAGCAGCAGCGCTGCGGGGGCCAAAGGGAAAGAAGAAGAACCGAAG  
 GAACAGAGGGGGCAAAGCCAACAACCCCGTATTTGCCCCCGAGGCTGAAGATGGAAACATTGAATAT  
 AAATTGAAGCTGGTGAATCCATCCAGTACCGCTTTGAGCACCTGGTGACACAAATGAAGTGGCGCTCC  
 AGGAGGGACGTGGTGAAGCCGCTACCAGATTGGGGTAGAGGACAATGGGCTGCTGGTGGGGCTGGCTGA  
 GGAGGAAATGCGAGCTTCGCTCAAGACCCTGCACCGGATGGCAGAGAAGGTTGGGCAGACATAACCGTT  
 CTTGAGAGCGAGAAGTGGATTATGATAGCGACATGCCCCGAAGATCACCGAGGTGCTAGTACGAAAGG  
 TCCCTGACAACCAACAGTTCCTAGACCTCCGTGTGGCCGTCTGGGGAATGTGGACTCTGGGAAGTCAAC  
 TCTGCTTGGAGTCTGACCCAGGAGAGCTGGACAATGGGCGGGCCGGGCTCGGCTCAACCTTTTCCGC  
 CACCTGCATGAGATTGAGTCTGGCCGAACCTCCAGCATCAGTTCGAGATCCTGGGCTTTAACAGCAAGG  
 GAGAGGTGGTGAATTACAGCGACTCACGGACAGCAGAAGAGATCTGTGAGAGCAGCTCAAGATGATCAC  
 CTTTCATCGACCTGGCAGGCCACCATAAGTACCTACACACCACCATCTTTGGCCTCACATCACTGCCCC  
 GACTGCGCCCTGCTCCTCGTCAGTGCCAACACTGGGATTGCTGGCACCACAAGGGAACATCTGGGCTGG  
 CCCTGGCCCTGAAAGTGCCTTCTTCATCGTGGTCAGCAAAGATCGACCTATGTGCCAAGACCACAGTGA  
 GAGGACGTACGCCAGCTGGAGCGGGTCTCAAGCAGCTGGCTGCCACAAGTCCCCATGCTGGTCAAC  
 TCTGAGGATGATGCCGTCAGTCTGCCCAGCAGTTTGTCTCAGTACCCCAATGTACCCCCATCTTCACAT  
 TGTCCAGTGTCTGGAGAGAGCTGGACCTCCTCAAAGTCTTTCTGAATATTCTGCCGCCACTACCAA  
 CAGCAAAGAGCAGGAGGAACATCATGACGAGCTGACGGAGTTCAGGTGGATGAAATCTACACAGTACCA  
 GAGGTGGGGACTGTTGTTGGAGGAACACTTTCAGTGGGATTTGCCGTGAGGGGGACCAGCTGGTGGTGG  
 GCCCCACGGATGATGGCTGCTTCTGGAGCTGAGAGTATGCAGCATCCAGCGCAACCGCTCTGCCTGTCG  
 TGTGCTGCGAGCTGGTCAAGGCTGCTACACTGGCGCTTGGGGACTTTGACCGTGCAGTCTTCCGAAGGGC  
 ATGGTGTGGTGAAGCCGGAGATGAATCCTACCATCTGCTCGGTGTTGAGGCAGAGATAGTCTTACTGT  
 TCCATGCCACCACCTCCGACGAGGATTCAGGTGACAGTACACGTGGGCAACGTACGTGACAGCGGAGT  
 GGTGAAAAGATCCATGCCAAGGACAACTGCGGACAGGGCAGAAAGCAGTGGTACGTTTCCGCTTCTCTG  
 AAACCCAGAGTACCTGAAGTGGGCGCCAAACTGCTGTTCCGGGAGGGTGTACCAAGGGCATCGGCC  
 ATGCTACTGATGTACAAGCCATTACAGCAGGAGAAGCCAGGCCAACATGGGCTTC

**ACGCGT**ACGCGGGCCGCTCGAGCAGAAACTCATCTCAGAAGAGGATCTGGCAGCAAATGATATCCTGGATT  
 ACAAGGATGACGACGATAAGGTTTAA

**Protein Sequence:**

>RC209457 protein sequence  
 Red=Cloning site Green=Tags(s)

MDSRVSELFGGCCRPGGGPAVGGTLKARGAGSSSGCGGPKGKKKNGRNRGGKANNPPYLPEAEDGNIEY  
 KLKLVNPSQYRFEHLVTQMKWRLQEGRGEAVYQIGVEDNGLLVGLAEEEMRASLKLHRMAEKVADITV  
 LREREVDYDSMPRKITEVLVRKVPDNQQFLDLRVAVLGNVDSGKSTLLGVLQGELDNGRGRARLNLFR  
 HLHEIQSGRTSSISFEILGFNSKGEVVNYSRSTAEIEICSSSKMITFIDLGHKKYLHTTIFGLTSYCP  
 DCALLLVANTGIAGTTREHLGLALALVKVFFIVVSKIDLCAKTTVERTVRQLERVLKQPGCHKVPLMLVT  
 SEDDAVTAQQFAQSPNVTPIFTLSSVSGESLDLLKVFLNLPPLTNSKEQEELMQQLTEFQVDEIYTVP  
 EVGTVVGGTSSGICREGDQLVVGPTDDGCFLELRVCSIQNRNSACRVLRAGQAATLALGDFDRALLRKG  
 MVMVSPENPTICSVFEAEIVLLFHATTFRRGFQVTVHVGNVQRQTAVVEKIHAKDKLRTGEKAVVRFRLF  
 KHPEYLKVGAKLLFREGVTKGIGHVTDVQAITAGEAQNMGF

**TR**TRPLEQKLISEEDLAANDILDYKDDDDKV

**Chromatograms:**

[https://cdn.origene.com/chromatograms/mk6531\\_h12.zip](https://cdn.origene.com/chromatograms/mk6531_h12.zip)

Restriction Sites: SgfI-MluI

Cloning Scheme:



ACCN: NM\_019096

ORF Size: 1806 bp

OTI Disclaimer: The molecular sequence of this clone aligns with the gene accession number as a point of reference only. However, individual transcript sequences of the same gene can differ through naturally occurring variations (e.g. polymorphisms), each with its own valid existence. This clone is substantially in agreement with the reference, but a complete review of all prevailing variants is recommended prior to use. [More info](#)

OTI Annotation: This clone was engineered to express the complete ORF with an expression tag. Expression varies depending on the nature of the gene.

Components: The ORF clone is ion-exchange column purified and shipped in a 2D barcoded Matrix tube containing 10ug of transfection-ready, dried plasmid DNA (reconstitute with 100 ul of water).

Reconstitution Method:

1. Centrifuge at 5,000xg for 5min.
2. Carefully open the tube and add 100ul of sterile water to dissolve the DNA.
3. Close the tube and incubate for 10 minutes at room temperature.
4. Briefly vortex the tube and then do a quick spin (less than 5000xg) to concentrate the liquid at the bottom.
5. Store the suspended plasmid at -20°C. The DNA is stable for at least one year from date of shipping when stored at -20°C.

RefSeq: [NM\\_019096.5](#)

RefSeq Size: 3043 bp

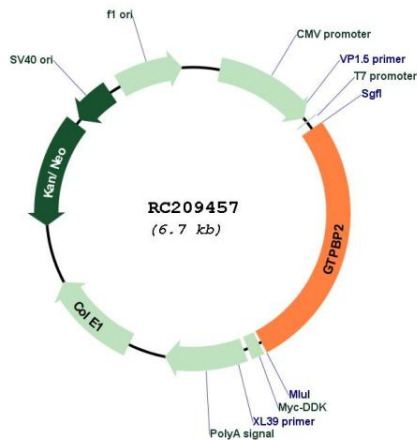
RefSeq ORF: 1809 bp

Locus ID: 54676

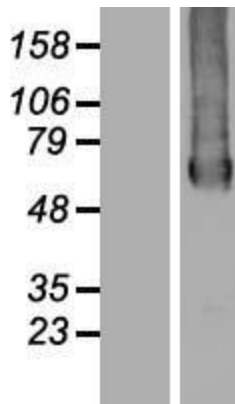
**UniProt ID:** [Q9BX10](#)  
**Cytogenetics:** 6p21.1  
**Domains:** GTP\_EFTU, GTP\_EFTU\_D3, GTP\_EFTU\_D2  
**MW:** 65.8 kDa

**Gene Summary:** GTP-binding proteins, or G proteins, constitute a superfamily capable of binding GTP or GDP. G proteins are activated by binding GTP and are inactivated by hydrolyzing GTP to GDP. This general mechanism enables G proteins to perform a wide range of biologic activities. [supplied by OMIM, Jan 2003]

**Product images:**



Circular map for RC209457



Western blot validation of overexpression lysate (Cat# [LY412755]) using anti-DDK antibody (Cat# [TA50011-100]). Left: Cell lysates from untransfected HEK293T cells; Right: Cell lysates from HEK293T cells transfected with RC209457 using transfection reagent MegaTran 2.0 (Cat# [TT210002]).