

## Product datasheet for **RC209454**

### **DGLUCY (NM\_024952) Human Tagged ORF Clone**

#### **Product data:**

Product Type:	Expression Plasmids
Product Name:	DGLUCY (NM_024952) Human Tagged ORF Clone
Tag:	Myc-DDK
Symbol:	DGLUCY
Synonyms:	C14orf159
Mammalian Cell Selection:	Neomycin
Vector:	pCMV6-Entry (PS100001)
E. coli Selection:	Kanamycin (25 ug/mL)



[View online »](#)

**ORF Nucleotide  
Sequence:**

&gt;RC209454 ORF sequence

Red=Cloning site Blue=ORF Green=Tags(s)

 TTTTGAATACGACTCACTATAGGGCGGCCGGAATTCGTCGACTGGATCCGGTACCGAGGAGATCTGCC  
GCC**CGCATCGC**C

 ATGCCCTTCACACTCCACCTGAGGTCCCGCCTTCCTCTGCCATAAGGAGTTTGATTCTACAAAAGAAAC  
CAAACATCAGAAATACATCCAGCATGGCTGGAGAGCTCCGACCAGCCAGCCTGGTGGTCCTGCCAGGTC  
CCTTGCTCCAGCTTTTGAAAGATTCTGCCAGGTCAACACTGGTCCTCTACCCCTGCTGGGCCAGAGTGAG  
CCAGAAAAGTGGATGCTGCCCCCTCAAGGTGCTATCTCAGAGACCAGGATGGGCCATCCCGATTCTGGA  
AATACGAGTTCGGTGCCTGCACCGGTAGCTGGCTTCGCTGGAGCAGTACTCGGAGCAGCTGAAGGACAT  
GGTGGCCTTCTTCTGGGCTGCAGCTTCTCCCTGGAGGAGGCCTTGAGAAAAGCGGGGCTCCCCAGAAGA  
GACCCAGCAGGTACAGCCAGACAACAGTGCCTTGTGTTACCCATGCTGGCTTCTGCTGCCCTCTGGTGG  
TCACGATGAGGCCATTCCCAAGGACAAGCTGGAAGGGCTGGTGGGGCCTGCTGCTCCCTCGGAGGTGA  
GCAGGGGCAACCTGTTACATGGGCGACCCAGAACTGTTGGGAATCAAAGAGCTTCCAAACCTGCCTAC  
GGGGATGCCATGGTGTGTCCCCAGGGGAGGTTCCAGTGTCTGGCCTTCTCCGCTGACCACTCTCGGAG  
CTGTGACGAGCTGTGAGACCCCACTGGCTTTTGCCAGCATCCAGGCTGCACAGTTATGACTGACCTGAA  
GGATGCAAAGGCTCCACCTGGTGTCTACCCCAAGAGAGAAATCCAGAGGTCCATCACATTTCCCAAGAT  
CCTCTGCACTACAGCATCGCGTCAGTCTCTGCTTCTCAGAAGATCAGAGAACTAGAGTCTATGATCGGCA  
TAGACCCAGGGAACCGGGGATTGGGCACCTGCTCTGTAAGATGAGCTGCTGAAGGCCTCTCTCTCGCT  
GTCCCATGCCCGCTCAGTGTCTACCACTGGGTTCCCAACATTTCAATCATGAGCCTCCAGAAGAG  
ACAGATGGCCCAAGGAGCTGTTGCTCTGGTTGCCTTCTGCAGGCCTTGAGAGAAGGAGGTGCGCATAA  
TCGTTGACCAAGAGCCTGGAACCTGCACCAAGATTGTTGAAGATGCTGTTGAGCAAGGTGTTCTGAA  
GACGCAGATCCCGATATTAACCTACCAAGGTGGATCAGTGGAAAGCTGCTCAGGCATTCTGTGCAAAAAT  
GGGGACCCGACAGACCTAGATTTGACCACCTGGTGGCCATAGAGCGTGCCGGAAGAGCTGCTGATGGCA  
ATTACTACAATGCAAGGAAGATGAACATCAAGCACTTGTTGACCCATTGACGATCTTTTTCTTCTGCTGC  
GAAGAAGATTCTGGAATCTCATCACTGGAGTCGGTATGGAGGCAACGAGCTTGGGATGGGTAAGTC  
AAGGAGGCTGTGAGGAGGCACATACGGCACGGGATGTCATCGCCTGCGACTGTACATCTGTACTCATGTGC  
TCATTGCTGGTGTCTAACTGGGAGGCTATGCCCTGGCCTGCGCACTTACATCTGTACTCATGTGC  
TGTCACAGTCAGTACCTGAGGAAAGCAGTCGGACCTCCAGGGCACCTGGAGATCAGGCCTGGACTCAG  
GCCCTCCCGTCGGTCATTAAGGAAGAAAAATGCTGGGCATCTTGGTGCAGCACAAGTCCGGAGTGGCG  
TCTCGGGCATCGTGGGCATGGAGGTGGATGGGCTGCCCTTCCACAACACCCACGCCGAGATGATCCAGAA  
GCTGGTGGACGTACCACGGCACAGTG

**ACGCGT**ACGCGGCCGCTCGAGCAGAACTCATCTCAGAAGAGGATCTGGCAGCAAATGATATCCTGGATT  
ACAAGGATGACGACGATAAGGTTTAA

**Protein Sequence:**

&gt;RC209454 protein sequence

Red=Cloning site Green=Tags(s)

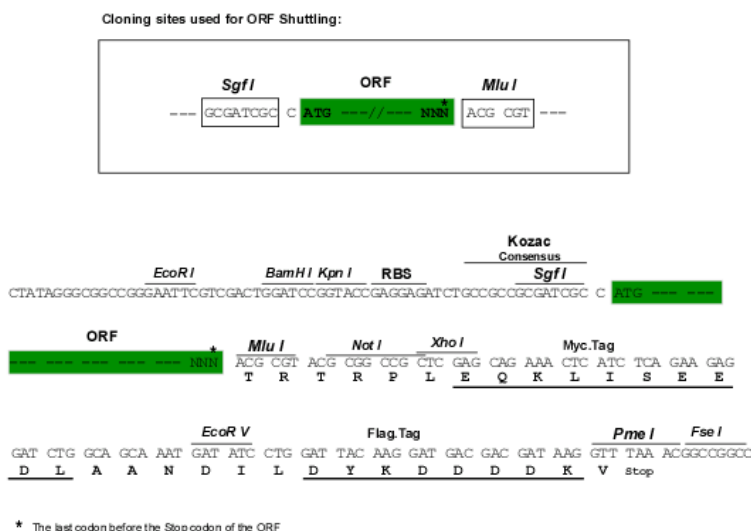
 MPFTLHLRSRLPSAIRSLILQKKPNIRNTSSMAGELRPASLVVLPRSLAPAFERFCQVNTGPLPLLGQSE  
PEKWMLPPQGAISETRMGHPQFWKYEFGACTGSLASLEQYSEQLKDMVAFFLGCSFSLEEALAKGLPRR  
DPAGHSQTTVPCVTHAGFCPLVVTMRPIPKDKLEGLVRACCSLGGEQGPVHMGDPELLGIKELSKPAY  
GDAMVCPPEVPVFWPSPLTSLGAVSSCETPLAFASIPGCTVMTDLKDAKAPPGCLTPERIPEVHHISQD  
PLHYSIASVSASQKIRELESMIGIDPGNRGIGHLLCKDELLKASLSLSHARSVLITTFPPTHFNHEPPEE  
TDGPPGAVLVAFLQALEKEVAIIVDQRAWNLHQKIVEDAVEQGVLTQIPILTYQGSVEAAQAFCKN  
GDPQTPRFDHLVAIERAGRAADGNYYNARKMNIHLVDPIDDLFLAAKKIPGISSTGVGDGGMELGMKV  
KEAVRRHIRHGDVIACDVEADFAVIAGVSNWGGYALACALYILYSCAVHSQYLKAVGPSRAPGDQAWTQ  
ALPSVIKEEKMLGILVQHKVRSVSGIVGMEVDGLPFHNTHAEMIQKLVDTTAQV

**TR**TRPLEQKLISEEDLAANDILDYKDDDDKV

Chromatograms: [https://cdn.origene.com/chromatograms/mk6357\\_d09.zip](https://cdn.origene.com/chromatograms/mk6357_d09.zip)

Restriction Sites: SgfI-MluI

Cloning Scheme:



ACCN: NM\_024952

ORF Size: 1848 bp

OTI Disclaimer: The molecular sequence of this clone aligns with the gene accession number as a point of reference only. However, individual transcript sequences of the same gene can differ through naturally occurring variations (e.g. polymorphisms), each with its own valid existence. This clone is substantially in agreement with the reference, but a complete review of all prevailing variants is recommended prior to use. [More info](#)

OTI Annotation: This clone was engineered to express the complete ORF with an expression tag. Expression varies depending on the nature of the gene.

Components: The ORF clone is ion-exchange column purified and shipped in a 2D barcoded Matrix tube containing 10ug of transfection-ready, dried plasmid DNA (reconstitute with 100 ul of water).

Reconstitution Method:

1. Centrifuge at 5,000xg for 5min.
2. Carefully open the tube and add 100ul of sterile water to dissolve the DNA.
3. Close the tube and incubate for 10 minutes at room temperature.
4. Briefly vortex the tube and then do a quick spin (less than 5000xg) to concentrate the liquid at the bottom.
5. Store the suspended plasmid at -20°C. The DNA is stable for at least one year from date of shipping when stored at -20°C.

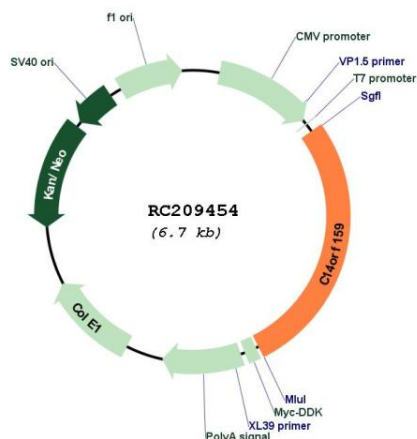
RefSeq: [NM\\_024952.3](#)

RefSeq Size: 3011 bp

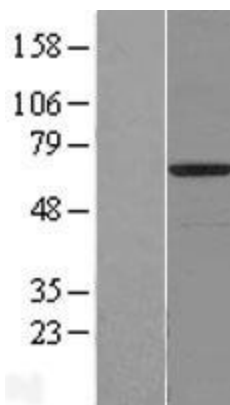
RefSeq ORF: 1851 bp

Locus ID:	80017
UniProt ID:	<a href="#">Q7Z3D6</a>
Cytogenetics:	14q32.11
MW:	66.4 kDa
Gene Summary:	D-glutamate cyclase that converts D-glutamate to 5-oxo-D-proline.[UniProtKB/Swiss-Prot Function]

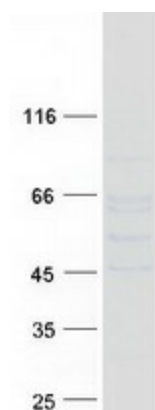
## Product images:



Circular map for RC209454



Western blot validation of overexpression lysate (Cat# [LY420134]) using anti-DDK antibody (Cat# [TA50011-100]). Left: Cell lysates from untransfected HEK293T cells; Right: Cell lysates from HEK293T cells transfected with [RC223896] using transfection reagent MegaTran 2.0 (Cat# [TT210002]).



Coomassie blue staining of purified DGLUCY protein (Cat# [TP309454]). The protein was produced from HEK293T cells transfected with DGLUCY cDNA clone (Cat# RC209454) using MegaTran 2.0 (Cat# [TT210002]).