

Product datasheet for RC209451

VEGFC (NM_005429) Human Tagged ORF Clone

Product data:

Product Type:	Expression Plasmids
Product Name:	VEGFC (NM_005429) Human Tagged ORF Clone
Tag:	Myc-DDK
Symbol:	VEGFC
Synonyms:	Flt4-L; LMPH1D; LMPHM4; VRP
Vector:	pCMV6-Entry (PS100001)
E. coli Selection:	Kanamycin (25 ug/mL)
Cell Selection:	Neomycin
ORF Nucleotide Sequence:	>RC209451 representing NM_005429. Blue=ORF Red=Cloning site Green=Tag(s)

```
GCTCGTTTAGTGAACCGTCAGAATTTTGTAAACGACTCACTATAGGGCGGCCGGGAATTCGTCGACTG
GATCCGGTACCGAGGAGATCTGCCGCCGCGATCGCC
ATGCACTTGCTGGGCTTCTTCTGTGGCGTGTCTCTGCTCGCCGCTGCGCTGCTCCCGGGTCTCTCGC
GAGGGCCCGCCGCCGCCGCCCTTCGAGTCCGGACTCGACCTCTCGGACGCGGAGCCCGACGCGGGC
GAGGCCACGGCTTATGCAAGCAAAGATCTGGAGGAGCAGTTACGGTCTGTGTCCAGTGTAGATGAACTC
ATGACTGTACTCTACCCAGAATATTGAAAATGTACAAGTGTACAGTAAGGAAAGGAGGCTGGCAACAT
AACAGAGAACAGGCCAACCTCAACTCAAGGACAGAAGAGACTATAAAAATTTGCTGCAGCATTATAAT
ACAGAGATCTTGAAGTATTGATAATGAGTGGAGAAAGACTCAATGCATGCCACGGGAGGTGTGTATA
GATGTGGGGAAGGAGTTTGGAGTCGCGACAAACACCTTCTTTAAACCTCCATGTGTGTCCGCTACAGA
TGTGGGGTGTGCAATAGTGAGGGGCTGCAGTGCATGAACACCAGCAGGCTACCTCAGCAAGACG
TTATTTGAAATTACAGTGCCTCTCTCAAGGCCCAAACCAAGTAAACATCAGTTTTGCCAATCACACT
TCCTGCCGATGCATGTCTAACTGGATGTTACAGACAAGTTCATTCCATTATTAGACGTTCCCTGCCA
GCAACTACTACCAGTGTCCAGGCAGCGAACAAGACCTGCCCCACCAATTACATGTGGAATAATCACATC
TGCAGATGCCTGGCTCAGGAAGATTTTATGTTTTCTCGGATGCTGGAGATGACTCAACAGATGGATTC
CATGACATCTGTGGACCAACAAGGAGCTGGATGAAGAGACCTGTCAAGTGTCTGCAGAGCGGGGCTT
CGGTCTGCCAGCTGTGGACCCCAAAAAGAACTAGACAGAACTCATGCCAGTGTGTCTGTA AAAACAAA
CTTTCCCGCAATGTGGGGCAACCGAGAATTTGATGAAAACACATGCCAGTGTGTATGTA AAAAGA
ACCTGCCCCAGAAATCAACCCCTAAATCCTGAAAATGTGCCTGTGAATGTACAGAAAGTCCACAGAAA
TGCTTGTTAAAAGGAAAGAAGTTCACCACCAACATGCAGCTGTACAGACGGCCATGTACGAACCGC
CAGAAGGCTGTGAGCCAGGATTTTCATATAGTGAAGAAGTGTGCGTTGTGCCCTTCATATTGAAA
AGACCACAAATGAGC
ACGCGTACGCGGCCGCTCGAGCAGAACTCATCTCAGAAGAGGATCTGGCAGCAAATGATATCCTGGAT
TACAAGGATGACGACGATAAGGTTTAAACGGCCGCGC
```



[View online »](#)

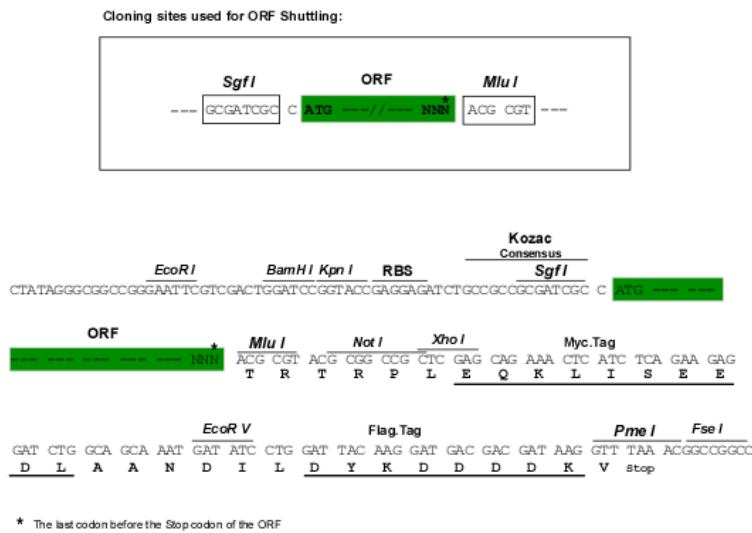
Protein Sequence: >Peptide sequence encoded by RC209451
 Blue=ORF Red=Cloning site Green=Tag(s)

MHLLGFFSVACSLLAALLPGPREAPAAAAAFESGLDLSAEPDAGEATAYASKDLEEQLRSVSSVDEL
 MTVLYPEYWKMYKCQLRKGWQHNREQANLNSRTEETIKFAAAHYNTEILKSIDNEWRTQCMPREVCI
 DVGKEFGVATNTFFKPPCVSVYRCGGCCNSEGLQCMNTSTSYLSKTLFEITVPLSQGPKPVTISFANHT
 SCRCMSKLDVYRQVHSIIRRSLPATLPQCAANKTCPTNYMWNHICRCLAQEDFMFSSDAGDDSDTGF
 HDICGPNKELDEETCQCVCRAGLRSASCGPHKELDRNSCQCVCNKLFPSQCANREFDENTCQCVCCKR
 T CPRNQPLNPGKACACECTESPQKCLLKGKFFHHQTCSCYRRPCTNRQKACEPGFSYSEEVCRCVPSYWK
 RPQMS
 TRTRPLEQKLISEEDLAANDILDYKDDDDKV

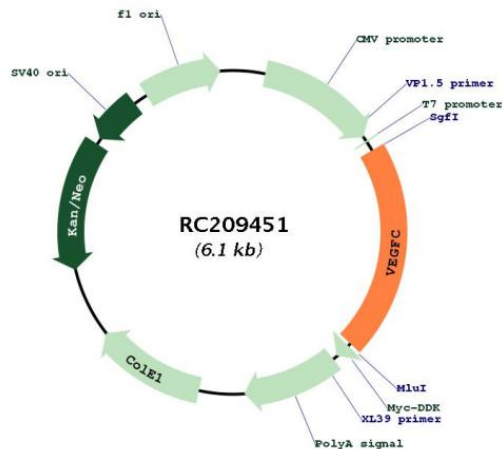
Chromatograms: https://cdn.origene.com/chromatograms/mk6147_c04.zip

Restriction Sites: SgfI-MluI

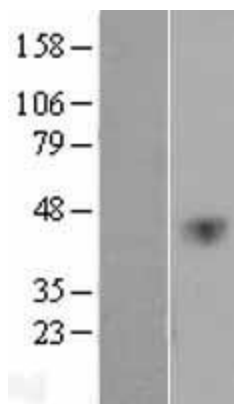
Cloning Scheme:



Plasmid Map:



ACCN:	NM_005429
ORF Size:	1257 bp
OTI Disclaimer:	<p>Due to the inherent nature of this plasmid, standard methods to replicate additional amounts of DNA in E. coli are highly likely to result in mutations and/or rearrangements. Therefore, OriGene does not guarantee the capability to replicate this plasmid DNA. Additional amounts of DNA can be purchased from OriGene with batch-specific, full-sequence verification at a reduced cost. Please contact our customer care team at custsupport@origene.com or by calling 301.340.3188 option 3 for pricing and delivery.</p> <p>The molecular sequence of this clone aligns with the gene accession number as a point of reference only. However, individual transcript sequences of the same gene can differ through naturally occurring variations (e.g. polymorphisms), each with its own valid existence. This clone is substantially in agreement with the reference, but a complete review of all prevailing variants is recommended prior to use. More info</p>
OTI Annotation:	This clone was engineered to express the complete ORF with an expression tag. Expression varies depending on the nature of the gene.
RefSeq:	NM_005429.5
RefSeq Size:	2103 bp
RefSeq ORF:	1260 bp
Locus ID:	7424
Domains:	PDGF, CXCXC
Protein Families:	Druggable Genome, Secreted Protein
Protein Pathways:	Bladder cancer, Cytokine-cytokine receptor interaction, Focal adhesion, mTOR signaling pathway, Pancreatic cancer, Pathways in cancer, Renal cell carcinoma
MW:	46.9 kDa
Gene Summary:	<p>The protein encoded by this gene is a member of the platelet-derived growth factor/vascular endothelial growth factor (PDGF/VEGF) family. The encoded protein promotes angiogenesis and endothelial cell growth, and can also affect the permeability of blood vessels. The proprotein is further cleaved into a fully processed form that can bind and activate VEGFR-2 and VEGFR-3 receptors. [provided by RefSeq, Apr 2014]</p>

Product images:

Western blot validation of overexpression lysate (Cat# [LY401667]) using anti-DDK antibody (Cat# [TA50011-100]). Left: Cell lysates from untransfected HEK293T cells; Right: Cell lysates from HEK293T cells transfected with RC209451 using transfection reagent MegaTran 2.0 (Cat# [TT210002]).