

## Product datasheet for **RC209449**

### WDR23 (DCAF11) (NM\_025230) Human Tagged ORF Clone

#### Product data:

Product Type:	Expression Plasmids
Product Name:	WDR23 (DCAF11) (NM_025230) Human Tagged ORF Clone
Tag:	Myc-DDK
Symbol:	WDR23
Synonyms:	GL014; PRO2389; WDR23
Mammalian Cell Selection:	Neomycin
Vector:	pCMV6-Entry (PS100001)
E. coli Selection:	Kanamycin (25 ug/mL)



[View online »](#)

**ORF Nucleotide Sequence:**

>RC209449 ORF sequence  
 Red=Cloning site Blue=ORF Green=Tags(s)

TTTTGTAATACGACTCACTATAGGGCGGCCGGGAATTCGTCGACTGGATCCGGTACCGAGGAGATCTGCC  
 GCC**CGGATCGCC**

ATGGGATCGCGGAACAGCAGCAGTGCAGGATCCGGTCCGGAGACCCCTCCGAGGGCTTGCCTCGAAGAG  
 GGGCTGGCTGCGTCGGAGTGAGGAAGAGGAAGAAGAGGATGAAGATGTGGATCTGGCCAGGACTGGC  
 CTATCTCTCCGAGAGGCCAAGTGAGGTTGGTGCAGGGAGGAGTGCAGCAAATTTACAATTCATTGAG  
 GCCCTCTTGGACTCAGAGGAAGAGAATGACAGAGCTTGGGATGGTCTGTTGGGGATCGATAACAACCCAC  
 CTGTGGATGCTACCCCTGACACCCGGGAGCTGGAATTCATGAGATCAAGACACAAGTGGAACTGGCCAC  
 AGGGCAGCTGGGGCTTAGGCGGGCCGCCAGAAGCACAGCTTTCCTCGAATGTTGCACCAGAGAGAACGG  
 GGCCTCTGCCATCGGGAAAGCTTCTCCCTGGAGAACAGTCTCGAGTGATATCTCACTTCTTGCCAATG  
 ATCTGGGCTTCACTGATAGCTACTCTCAGAAGGCTTCTGTGGCATCTACAGCAAAGATGGTCAAATATT  
 CATGTCTGCTTGGCAAGACCAGACAATCCGACTCTATGACTGCCGATATGGCCGTTTCCATAAATCAAG  
 AGCATCAAGGCCCGCATGTAGGCTGGAGCGTCTTGGATGTGGCCTTACCCCTGATGGGAACCACTTCC  
 TCTACTTAGCTGGTCTGATTACATTCATATCTGCAATATCTATGGTGAGGGAGATACACACACTGCCCT  
 GGATCTCAGGCCAGATGAGCGTCTGCTTTGCTGTCTTCTCCATTGCTGTCTCCTCAGATGGACGAGAAGTA  
 CTAGGAGGGGCCAATGATGGCTGCCTGTATGTCTTTGACCGAGAACAAGACCCGGCGCACCCCTCAGATTG  
 AGTCCCATGAGGATGATGTGAATGCAGTGGCCTTTGCTGATATAAGTCCCAAATCTGTCTCTGGGGG  
 AGATGATGCCATCTGCAAAGTGTGGGATCGACGCCACCATGCGGGAGGATGACCCCAAGCCTGTGGGTGCA  
 CTGGCTGGACACCAGGATGGCATCACCTCATTGACAGCAAGGGTATGCCCGGTATCTGATCTCCAAT  
 CTAAGACACAGACCATCAAACCTGGGATATCCGACGCTTTTCCAGCCGGGAAGGCATGGAAGCTTACG  
 CCAGGCTGCCACACAGCAAAACTGGGACTATCGGTGGCAGCAAGTGCCCAAAAAAGCCTGGCGGAAGCTG  
 AAGCTCCAGGGGACAGCTCCTTGATGACCTACCGGGGCCACGGAGTGTGCACACCCTCATCCGCTGCC  
 GGTCTCCCCATTATAGCACTGGCCAGCAGTTCATCTACAGTGGTGTCTCACTGGCAAAGTGGTTGT  
 GTACGACCTTCTAAGTGGCCACATTGTGAAGAAGCTGACCAACCACAAGGCCTGTGTGCGTGACGTGAGT  
 TGGCACCCCTTTGAAGAGAAGATTGTGACGAGTTCGTGGGACGGGAACCTGCGTCTGTGGCAGTACCGCC  
 AGGCTGAGTACTCCAGGATGACATGCCAGAATCTGAGGAATGTGCCAGCGCCCTGCCCCAGTGCCCA  
 ATCCTCTACACCCTTTCTCACCCAG

**ACGCGT**ACGCGGCCGCTCGAGCAGAAACTCATCTCAGAAGAGGATCTGGCAGCAAATGATATCCTGGATT  
 ACAAGGATGACGACGATAAGGTTTAA

**Protein Sequence:**

>RC209449 protein sequence  
 Red=Cloning site Green=Tags(s)

MGRNSSSAGSGSDPSEGLPRRGAGLRRESEEEEEDEDVLAQVLAYLLRRGQVRLVQGGGAANLQFIQ  
 ALLDSEEENDRAWDGRLGDRYNPPVDATPDRTRELFNEIKTQVELATGQLGLRRAAQKHSFPRMLHQRER  
 GLCHRGSFSLGEQSRVISHFLPNDLGFTDSYSQKAFCGIYSKDQIFMSACQDQTI RLYDCRYGRFHFKF  
 SIKARDVGWSVLDVAFTPDGNHFLYSSWSDYIHICNIYGEEDTHTALDLRPDERRFAVFSIAVSSDGREV  
 LGGANDGCLYVFDREQNRRLQIESHEDDVNAFAFADISSQILFSGGDDAICKVWDRRTMREDDPKPVGA  
 LAGHQDGI TFDISKGDARYLISNSKDQTIKLWDIRRFSSREGMEASRQAATQQNWDYRWQVPPKAWRKL  
 KLPGDSSLMYRGHGVLHTLIRCRFSPIHSTGQQFIYSGCSTGKVVVYDLLSGHIVKKL TNHKACVRDVS  
 WHPFEEKIVSSSWDGNLRLWQYRQAEYFQDDMPESEECASAPAPVPSSTPFSSPQ

**TRTRPLEQKLI**SEEDLAANDILDYKDDDDKV

**Chromatograms:**

[https://cdn.origene.com/chromatograms/mk6357\\_h10.zip](https://cdn.origene.com/chromatograms/mk6357_h10.zip)

**Restriction Sites:**

Sgfl-Mlul

**Cloning Scheme:**

**ACCN:** NM\_025230

**ORF Size:** 1638 bp

**OTI Disclaimer:** The molecular sequence of this clone aligns with the gene accession number as a point of reference only. However, individual transcript sequences of the same gene can differ through naturally occurring variations (e.g. polymorphisms), each with its own valid existence. This clone is substantially in agreement with the reference, but a complete review of all prevailing variants is recommended prior to use. [More info](#)

**OTI Annotation:** This clone was engineered to express the complete ORF with an expression tag. Expression varies depending on the nature of the gene.

**Components:** The ORF clone is ion-exchange column purified and shipped in a 2D barcoded Matrix tube containing 10ug of transfection-ready, dried plasmid DNA (reconstitute with 100 ul of water).

- Reconstitution Method:**
1. Centrifuge at 5,000xg for 5min.
  2. Carefully open the tube and add 100ul of sterile water to dissolve the DNA.
  3. Close the tube and incubate for 10 minutes at room temperature.
  4. Briefly vortex the tube and then do a quick spin (less than 5000xg) to concentrate the liquid at the bottom.
  5. Store the suspended plasmid at -20°C. The DNA is stable for at least one year from date of shipping when stored at -20°C.

**RefSeq:** [NM\\_025230.5](#)
**RefSeq Size:** 4311 bp

**RefSeq ORF:** 1641 bp

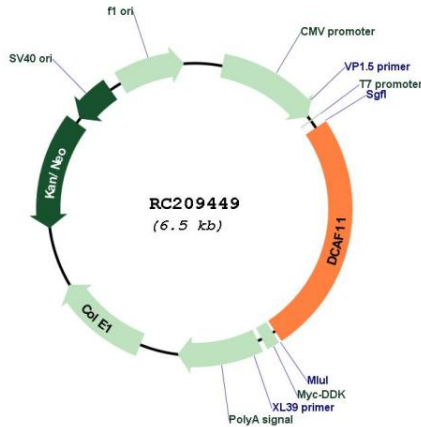
**Locus ID:** 80344

**UniProt ID:** [Q8TEB1](#)

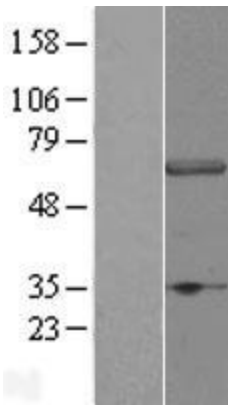
**Cytogenetics:** 14q12  
**Domains:** WD40  
**MW:** 61.7 kDa

**Gene Summary:** This gene encodes a WD repeat-containing protein that interacts with the COP9 signalosome, a macromolecular complex that interacts with cullin-RING E3 ligases and regulates their activity by hydrolyzing cullin-Nedd8 conjugates. Multiple alternatively spliced transcript variants have been found for this gene. [provided by RefSeq, Jul 2009]

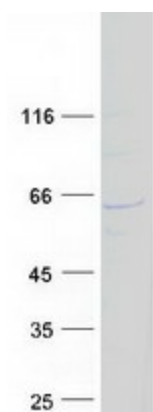
**Product images:**



Circular map for RC209449



Western blot validation of overexpression lysate (Cat# [LY431978]) using anti-DDK antibody (Cat# [TA50011-100]). Left: Cell lysates from untransfected HEK293T cells; Right: Cell lysates from HEK293T cells transfected with [RC228951] using transfection reagent MegaTran 2.0 (Cat# [TT210002]).



Coomassie blue staining of purified DCAF11 protein (Cat# [TP309449]). The protein was produced from HEK293T cells transfected with DCAF11 cDNA clone (Cat# RC209449) using MegaTran 2.0 (Cat# [TT210002]).