

Product datasheet for **RC209448**

DDX47 (NM_016355) Human Tagged ORF Clone

Product data:

Product Type:	Expression Plasmids
Product Name:	DDX47 (NM_016355) Human Tagged ORF Clone
Tag:	Myc-DDK
Symbol:	DDX47
Synonyms:	E4-DBP; HQ0256; MSTP162; RRP3
Mammalian Cell Selection:	Neomycin
Vector:	pCMV6-Entry (PS100001)
E. coli Selection:	Kanamycin (25 ug/mL)



[View online »](#)

ORF Nucleotide Sequence:

>RC209448 ORF sequence
 Red=Cloning site Blue=ORF Green=Tags(s)

TTTTGTAATACGACTCACTATAGGGCGGCCGGAATTCGTCGACTGGATCCGGTACCGAGGAGATCTGCC
 GCC**CGATCGCC**

ATGGCGGCACCCGAGGAACAGATTCTCCGACCGAAGCGTCCAGCCGATTGTGGAAGAGGAGAACTA
 AAACATTTAAAGACCTGGGTGTGACAGATGTGTTGTGAAGCTTGTGACCAGTTGGGATGGACAAAACC
 CACCAAGATCCAGATTGAAGCTATTCCTTTGGCCTTACAAGTCTGTATCATTGGGCTTGACAGAACT
 GGCTCTGGAAAGACAGGCGCCTTTGCTTTGCCATTCTAAACGCACTGCTGGAGACCCCGCAGCGTTTGT
 TTGCCCTAGTTCTTACCCCGACTCGGGAGCTGGCCTTTCAGATCTCAGAGCAGTTTGAAGCCCTGGGGTC
 CTCTATTGGAGTGCAGAGTGTGTGATTGTAGGTGGAATTGATTCATGTCTCAATCTTTGGCCCTTGCA
 AAAAAACCATATAATAATAGCAACTCTGGTCGACTGATTGACCACTGGAAAATACGAAAGTTTCA
 ACTTGAGAGCTCTCAAACTTTGGTCATGGATGAAGCCGACCGAATACTGAATATGGATTTTGGACAGA
 GGTTGACAAGATCCTCAAAGTATTCTCGAGATCGGAAAACATTCCTCTCTGCCACCATGACCAAG
 AAGTTTAAAAAATTCAGCGAGCAGCTCTGAAGAATCCTGTGAAATGTGCCGTTTCTCTAAATACCAGA
 CAGTTGAAAAATTACAGCAATATTATATTTTTATTCCTCTAAATTCAAGGATACCTACCTGGTTTATAT
 TCTAAATGAATTGGCTGGAACTCCTTTATGATATTCTGCAGCACCTGTAATAATACCCAGAGAACAGCT
 TTGCTACTGCGAAATCTTGGCTTCACTGCCATCCCCCTCCATGGACAAATGAGTCAGAGTAAGCGCCTAG
 GATCCCTTAATAAGTTTAAAGCCAAGGCCGTTCCATTCTTAGCAACTGACGTTGCCAGCCGAGGTTT
 GGACATACCTCATGTAGATGTGGTTGTCAACTTTGACATTCCTACCCATTCCAAGGATTACATCCATCGA
 GTAGGTCGAACAGCTAGAGCTGGGCGCTCCGAAAAGGCTATTACTTTTGTACACAGTATGATGTGGAAC
 TCTCCAGCGCATAGAACACTTAATTGGGAAGAACTACCAGTTTCCAACACAGGATGATGAGTTAT
 GATGCTGACAGAACGCGTCTGCTGAAGCCCAAAGGTTTGCCCGAATGGAGTTAAGGGAGCATGGAGAAAAG
 AAGAAACGCTCGCGAGAGGATGCTGGAGATAATGATGACACAGAGGGTGCTATTGGTGTCAGGAACAAG
 TGCTGGAGGAAAAATGAAGAAGCGGAAAGGCCGT

AG**CGGACCG**ACGCGTACGCGGCCGCTCGAGCAGAACTCATCTCAGAAGAGGATCTGGCAGCAAATGATATCC
 TGGATTACAAGGATGACGACGATAAGGTTTAA

Protein Sequence:

>RC209448 protein sequence
 Red=Cloning site Green=Tags(s)

MAAPEEHDSPTASQPIVEEEETKFKDLGVTDLCEACDQLGWTKPTKIQIEAIPALQGRDIIGLAET
 GSGKTGAFALPILNALLETPQRLFALVLTPTRELAFQISEQFEALGSSIGVQSAVIVGGIDSMSQSLALA
 KKPHEIIATPGRLIDHLENTKGFNLKALKYLMDEADRILNMDFETEVDKILKVIPDRKTFLLFSATMTK
 KVQKLQRAALKNPVKCAVSSKYQTVEKLQYYIFIPSKFKDTYLVYILNELAGNSFMIFCSTCNNTQRTA
 LLLRNLGFTAIPLHGMSQSKRLGSLNFKAKARSILLATDVASRLDIPHVDDVVNFDIPTHSKDYIHR
 VGR TARAGRSGKAITFVTQYDVELFQRIEHLIGKKLPGFPTQDDEVMMLTERVAEAQRFAARMELREHGEK
 KKRSREDAGDNDDEGAIGVRNKVAGGKMKKRKGR

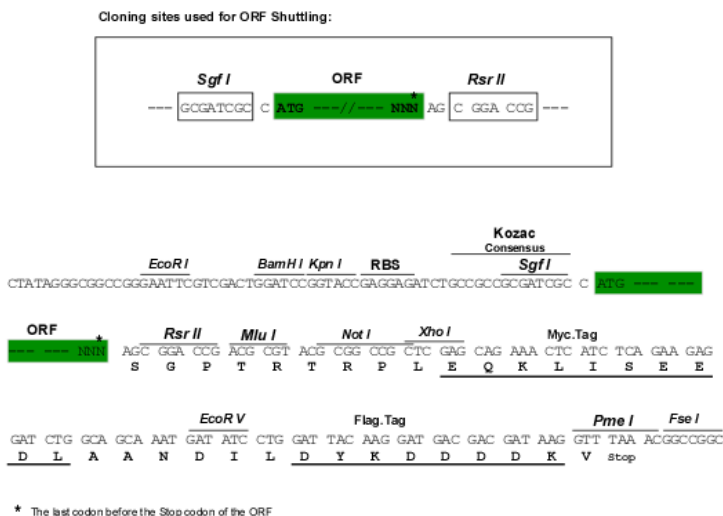
SGPTRTRPLEQKLI SEEDLAANDILDYKDDDDKV

Chromatograms:

https://cdn.origene.com/chromatograms/mk6620_d10.zip

Restriction Sites:

Sgfl-RsrII

Cloning Scheme:


ACCN: NM_016355

ORF Size: 1365 bp

OTI Disclaimer: The molecular sequence of this clone aligns with the gene accession number as a point of reference only. However, individual transcript sequences of the same gene can differ through naturally occurring variations (e.g. polymorphisms), each with its own valid existence. This clone is substantially in agreement with the reference, but a complete review of all prevailing variants is recommended prior to use. [More info](#)

OTI Annotation: This clone was engineered to express the complete ORF with an expression tag. Expression varies depending on the nature of the gene.

Components: The ORF clone is ion-exchange column purified and shipped in a 2D barcoded Matrix tube containing 10ug of transfection-ready, dried plasmid DNA (reconstitute with 100 ul of water).

Reconstitution Method:

1. Centrifuge at 5,000xg for 5min.
2. Carefully open the tube and add 100ul of sterile water to dissolve the DNA.
3. Close the tube and incubate for 10 minutes at room temperature.
4. Briefly vortex the tube and then do a quick spin (less than 5000xg) to concentrate the liquid at the bottom.
5. Store the suspended plasmid at -20°C. The DNA is stable for at least one year from date of shipping when stored at -20°C.

RefSeq: [NM_016355.4](#)

RefSeq Size: 1836 bp

RefSeq ORF: 1368 bp

Locus ID: 51202

UniProt ID: [Q9H0S4](#)

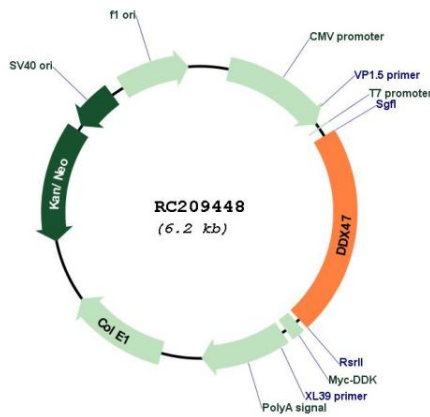
Cytogenetics: 12p13.1

Domains: DEAD, helicase_C

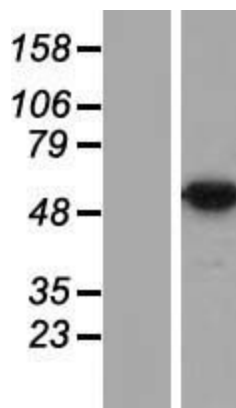
MW: 50.6 kDa

Gene Summary: This gene encodes a member of the DEAD box protein family. DEAD box proteins, characterized by the conserved motif Asp-Glu-Ala-Asp (DEAD), are putative RNA helicases. They are implicated in a number of cellular processes involving alteration of RNA secondary structure, such as translation initiation, nuclear and mitochondrial splicing, and ribosome and spliceosome assembly. Based on their distribution patterns, some members of this family are believed to be involved in embryogenesis, spermatogenesis, and cellular growth and division. The protein encoded by this gene can shuttle between the nucleus and the cytoplasm, and has an RNA-independent ATPase activity. Two alternatively spliced transcript variants encoding distinct isoforms have been found for this gene. [provided by RefSeq, Jul 2008]

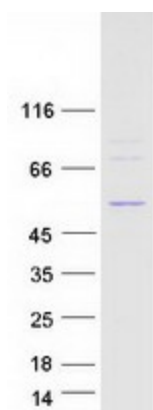
Product images:



Circular map for RC209448



Western blot validation of overexpression lysate (Cat# [LY414030]) using anti-DDK antibody (Cat# [TA50011-100]). Left: Cell lysates from untransfected HEK293T cells; Right: Cell lysates from HEK293T cells transfected with RC209448 using transfection reagent MegaTran 2.0 (Cat# [TT210002]).



Coomassie blue staining of purified DDX47 protein (Cat# [TP309448]). The protein was produced from HEK293T cells transfected with DDX47 cDNA clone (Cat# RC209448) using MegaTran 2.0 (Cat# [TT210002]).