

Product datasheet for **RC209442**

RNF139 (NM_007218) Human Tagged ORF Clone

Product data:

Product Type:	Expression Plasmids
Product Name:	RNF139 (NM_007218) Human Tagged ORF Clone
Tag:	Myc-DDK
Symbol:	RNF139
Synonyms:	HRCA1; RCA1; TRC8
Mammalian Cell Selection:	Neomycin
Vector:	pCMV6-Entry (PS100001)
E. coli Selection:	Kanamycin (25 ug/mL)



[View online »](#)

**ORF Nucleotide
Sequence:**

>RC209442 ORF sequence
 Red=Cloning site Blue=ORF Green=Tags(s)

TTTTGTAATACGACTCACTATAGGGCGGCCGGGAATTCGTCGACTGGATCCGGTACCGAGGAGATCTGCC
 GCC**CGGATCGCC**

ATGGCGGCCGTGGGGCCCCGACGAGCAGGTGCGGATGGCCATCAGCAGGTCTGGGCGGCCTCGAAG
 TGGCGCTCCGGGTGCCCTGCCTTTACATCATCGACGCCATCTTCAACTCCTACCCGGATTCCAGCCAAAG
 CCGGTTCTGCATCGTGTCCAGATCTTCTCCGGCTCTTTGGTGTATTTGCATCCAGTATTGTTCTGATC
 TTGTACACAACGATCACTTTCAAGTTTTACACGTACAGCTCAGCCTTTCTGTTAGCTGCAACTTCAGTGT
 TGGTGAATTATTATGCTTCTTTGCACATTGACTTCTATGGTGCCTACAACACGTACAGTTTTGGAATTGA
 GCTGCTTCTCGAAAAGGTCCCTCGCTGTGGATGGCACTTATCGTTCTACAGCTAACATTTGGAATTGGA
 TACGTTACTACTCCAGATTCATTCCATCTATTCACAATTAATTTTTGGATCTCTGGTTCTCTGTAA
 TAGGCTTAATCACAGAGCTACCATTACACATCAGAGAGACTTTACTGTTACTTCTTCTTGATTCTCAC
 ATTAATACAGTGTGGTCTGCGAGTGAAGTGAAGTGGTTTTATTATCCACACGATATGTTTATCTT
 TTGGTGAGGCACATGTATCGAATTTACGGATTACAGTTATTGATGGAGGACACATGGAAGAGGATTCCGT
 TCCCAGACATACTACGAGTCTTTGGCTAACAAGATTACAGCTCAGGCTACAGTGTAAATGTACATCTT
 AAGGATGGCAAATGAACTGATTCTTCTTTATTTCTTGGGATGATTTTTGGGACCTCATTTGCAATCTT
 ATAATTAGTGGGTGCGATTCTACACTAACTGACTGGGCATGAGTGTGTAATTTCTCAGTAGCCCAT
 ATTTGGGGCTTGGAAATTTGGCCTTTATGGATCAACTGAGGAAGATGACAGGCGCTTGGCTTTGTTGC
 ACCTGTTTTATTTTTATTTGGCTCTCAGACTGGGTTAAGTGGGCTAAGACCAGAAGAGAGACTTATT
 CGCTTAAGTAGAAACATGTGCCTTTATTAAGTGCAGTCTGCATTTTATCCATGGAATGACAGACCCTG
 TATTAATGTCTCTCAGTGCCTCTCATGTGCATCTTTTCGTAGACATTTTCTGTGCTGTTTGTCTCTGC
 TTGCCTGTTTATTCTTCTGTCTTACTCAGTTATGTTCTTTGGCATCACTATGCACTAAATACATGGTTG
 TTTGCAGTTACAGCATTTTGTGTGGAAGTGTGCTTAAAAGTAATTGTTTCTCTCACTGTTTATACGTTAT
 TCATGATTGATGGCTACTATAATGTCTCTGGGAAAAGCTTGACGATTATGTCTACTACGTTCTGTTCAAC
 AGGCAGTATTATTGAATTTATTTGGAGTTGTAATGTTTGGAAATGGGGCTTACACTATGATGTTTGGAG
 TCGGGAAGTAAAATTCGGGCTTTTATGATGTGCCTACATGCATATTTAACATCTACTTACAAGCCAAAA
 ATGGCTGGAAGACATTTATGAATCGTAGGACTGCTGTGAAGAAAATTAATCACTTCTGAAATAAAAGG
 GAGCCGTTACAAGAAAATAATGATGTATGTGCAATCTGCTATCATGAGTTTACAACATCTGCTCGTATT
 ACACCGTGAATCATTATTTCCATGCATTTGCCTTCGGAAATGGCTGTACATTCAAGATACTTGTCCAA
 TGTGCCATCAGAAAGTATACATCGAAGATGATATCAAGGATAATTCAAATGTATCTAACAACAATGGATT
 TATTCCACCCAATGAAACTCCAGAGGAAGCTGTAAAGAGAAGCTGCTGCTGAATCTGACAGGGAATTGAAC
 GAAGATGACAGTACAGATTGTGATGATGATGTTCAAAGAGAAAAGAAATGGAGTGATTACAGCACACAGGCG
 CAGCAGCTGAAGAATTTAATGATGATACTGAC

ACGCGTACGCGGCCGCTCGAGCAGAACTCATCTCAGAAGAGGATCTGGCAGCAAATGATATCCTGGATT
 ACAAGGATGACGACGATAAGGTTTAA

Protein Sequence: >RC209442 protein sequence
Red=Cloning site Green=Tags(s)

```

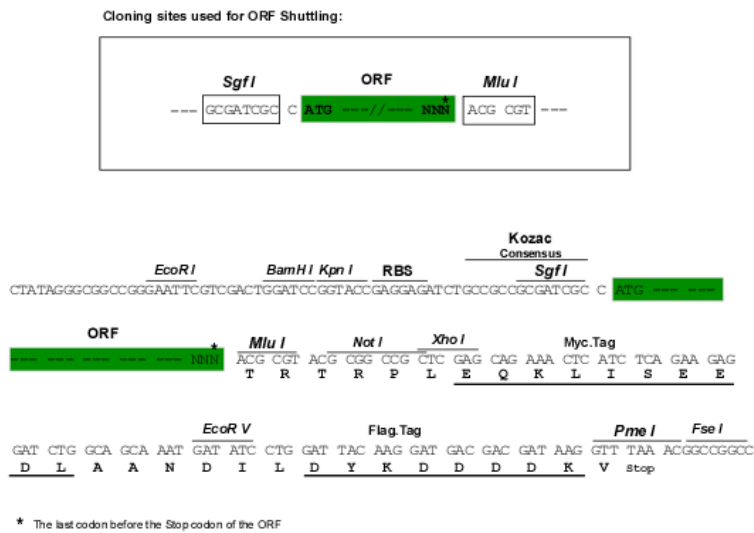
MAAVGPPQQVVRMAHQVVAALEVALRVPCLYIIDAFNSYPDSSQSRFCIVLQIFLRLFGVFASSIVLI
LSQRSLFKFYTYSSAFLAATSVLVNYASLHIDFYGAYNTSAFGIELLPRKGPSLWMALIVLQLTFGIG
YVTLQLIHSIYQLIILDLLVPVIGLITELPLHIRETLTFTSSLILTLNTVFLAVLKLKWFYYSTRYVYL
LVRHMYRIYGLQLLMEDTWKRIRFPDILRVFWLTRVTAQATVLMYILRMANETDSFFISWDDFWDLICNL
IISGCDSTLTVLGMASAVISVAHYLGLGILAFIGSTEEDRRRLGFVAPVLPFFILALQTLGLSGLRPEERLI
RLSRNMCLLLTAVLHFHIGMTDPVLMSLSASHVSSFRRHFPVLFVSACLFILPVLLSYVLWHYALNTWL
FAVTAFCVELCLKVIVSLTVYTLFMIDGYNVLWEKLDYVYVYRSTGSIIEFIFGVVMFGNGAYTMMFE
SGSKIRAFMMCLHAYFNIYLQAKNGWKTfMNRRTAVKKINSLPEIKGSRLEINDVCAICYHEFTTSARI
TPCNHYFHALCLRKWLVIQDTCPMCHQVYIEDDIKDNSNVSNNNGFIPPNETPEEAVRAAAAESDRELN
EDDSTDCDDVQREERNGVIQHTGAAAEFNDDTD
    
```

TRTRPLEQKLISEEDLAANDILDYKDDDDKV

Chromatograms: https://cdn.origene.com/chromatograms/mk6198_h12.zip

Restriction Sites: SgfI-MluI

Cloning Scheme:



ACCN: NM_007218

ORF Size: 1992 bp

OTI Disclaimer: The molecular sequence of this clone aligns with the gene accession number as a point of reference only. However, individual transcript sequences of the same gene can differ through naturally occurring variations (e.g. polymorphisms), each with its own valid existence. This clone is substantially in agreement with the reference, but a complete review of all prevailing variants is recommended prior to use. [More info](#)

OTI Annotation: This clone was engineered to express the complete ORF with an expression tag. Expression varies depending on the nature of the gene.

Components: The ORF clone is ion-exchange column purified and shipped in a 2D barcoded Matrix tube containing 10ug of transfection-ready, dried plasmid DNA (reconstitute with 100 ul of water).

Reconstitution Method:

1. Centrifuge at 5,000xg for 5min.
2. Carefully open the tube and add 100ul of sterile water to dissolve the DNA.
3. Close the tube and incubate for 10 minutes at room temperature.
4. Briefly vortex the tube and then do a quick spin (less than 5000xg) to concentrate the liquid at the bottom.
5. Store the suspended plasmid at -20°C. The DNA is stable for at least one year from date of shipping when stored at -20°C.

RefSeq: [NM_007218.4](#)

RefSeq Size: 3312 bp

RefSeq ORF: 1995 bp

Locus ID: 11236

UniProt ID: [Q8WU17](#)

Cytogenetics: 8q24.13

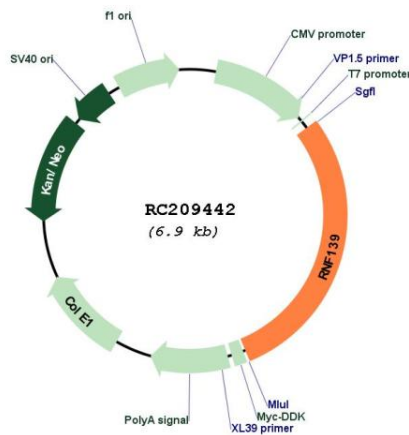
Domains: RING

Protein Families: Druggable Genome, Transmembrane

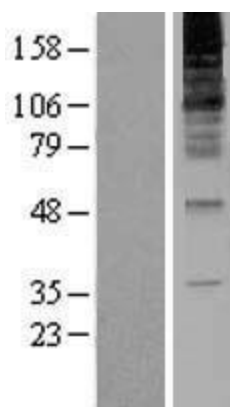
MW: 76 kDa

Gene Summary: The protein encoded by this gene is a multi-membrane spanning protein containing a RING-H2 finger. This protein is located in the endoplasmic reticulum, and has been shown to possess ubiquitin ligase activity. This gene was found to be interrupted by a t(3:8) translocation in a family with hereditary renal and non-medullary thyroid cancer. Studies of the *Drosophila* counterpart suggested that this protein may interact with tumor suppressor protein VHL, as well as with COPS5/JAB1, a protein responsible for the degradation of tumor suppressor CDKN1B/P27KIP. [provided by RefSeq, Jul 2008]

Product images:



Circular map for RC209442



Western blot validation of overexpression lysate (Cat# [LY402115]) using anti-DDK antibody (Cat# [TA50011-100]). Left: Cell lysates from untransfected HEK293T cells; Right: Cell lysates from HEK293T cells transfected with RC209442 using transfection reagent MegaTran 2.0 (Cat# [TT210002]).