

Product datasheet for **RC209441**

CNPY2 (NM_014255) Human Tagged ORF Clone

Product data:

Product Type:	Expression Plasmids
Product Name:	CNPY2 (NM_014255) Human Tagged ORF Clone
Tag:	Myc-DDK
Symbol:	CNPY2
Synonyms:	HP10390; MSAP; TMEM4; ZSIG9
Mammalian Cell Selection:	Neomycin
Vector:	pCMV6-Entry (PS100001)
E. coli Selection:	Kanamycin (25 ug/mL)
ORF Nucleotide Sequence:	>RC209441 ORF sequence Red=Cloning site Blue=ORF Green=Tags(s)

TTTTGTAATACGACTCACTATAGGGCGGCCGGAATTCGTCGACTGGATCCGGTACCGAGGAGATCTGCC
 GCC**CGATCGCC**

ATGAAAGGCTGGGTTGGCTGGCCCTGCTTCTGGGGGCCCTGCTGGGAACCGCCTGGGCTCGGAGGAGCC
 AGGATCTCCACTGTGGAGCATGCAGGGCTCTGGTGGATGAAGTGAATGGGAAATTGCCAGGTGGACCC
 CAAGAAGACCATTAGATGGGATCTTTCCGGATCAATCCAGATGGCAGCCAGTCAGTGGTGGAGGTGCCT
 TATGCCCGCTCAGAGGCCACCTCACAGAGCTGCTGGAGGAGATATGTGACCGGATGAAGGAGTATGGGG
 AACAGATTGATCCTTCCACCCATCGAAGAACTACGTACGTGTAGTGGCCGGAATGGAGAATCCAGTGA
 ACTGGACCTACAAGGCATCCGAATCGACTCAGATATTAGCGGCACCCCTCAAGTTTGCGTGTGAGAGCATT
 GTGGAGGAATACGAGGATGAAGTCAATTGATCTTTTCCGAGAGGCTGACAATGTTAAAGACAACTTT
 GCAGTAAGCGAACAGATCTTTGTGACCATGCCCTGCACATATCGCATGATGAGCTA

ACGCGTACGCGGCCGCTCGAGCAGAACTCATCTCAGAAGAGGATCTGGCAGCAAATGATATCCTGGATT
 ACAAGGATGACGACGATAAGGTTTAA

Protein Sequence:	>RC209441 protein sequence Red=Cloning site Green=Tags(s)
-------------------	--

MKGWGLALLLGALLGTAWARRSQDLHCGACRALVDELEWEIAQVDPKKTIQMGSFRINPDGSQSVEVP
 YARSEAHLTELEEICDRMKEYGEQIDPSTHRKNYVRVGRNGESSELDLQGIRIDSDISGLKFACESI
 VEEYEDELIEFFSREADNVKDKLCSKRTDLCDHALHSHDEL

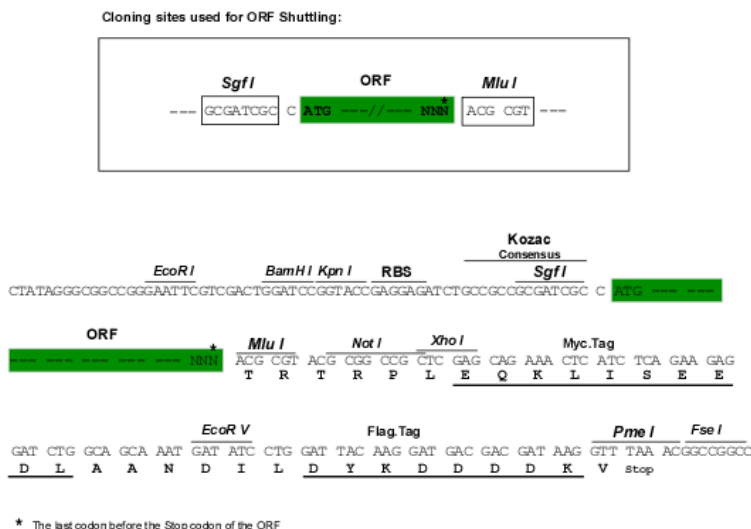
TRTRPLEQKLISEEDLAANDILDYKDDDDKV

Chromatograms:	https://cdn.origene.com/chromatograms/mk6127_g05.zip
----------------	---


[View online »](#)

Restriction Sites: Sgfl-MluI

Cloning Scheme:



ACCN: NM 014255

ORF Size: 546 bp

OTI Disclaimer: The molecular sequence of this clone aligns with the gene accession number as a point of reference only. However, individual transcript sequences of the same gene can differ through naturally occurring variations (e.g. polymorphisms), each with its own valid existence. This clone is substantially in agreement with the reference, but a complete review of all prevailing variants is recommended prior to use. More info

OTI Annotation: This clone was engineered to express the complete ORF with an expression tag. Expression varies depending on the nature of the gene.

Components: The ORF clone is ion-exchange column purified and shipped in a 2D barcoded Matrix tube containing 10ug of transfection-ready, dried plasmid DNA (reconstitute with 100 ul of water).

Reconstitution Method:

1. Centrifuge at 5,000xg for 5min.
2. Carefully open the tube and add 100ul of sterile water to dissolve the DNA.
3. Close the tube and incubate for 10 minutes at room temperature.
4. Briefly vortex the tube and then do a quick spin (less than 5000xg) to concentrate the liquid at the bottom.
5. Store the suspended plasmid at -20°C. The DNA is stable for at least one year from date of shipping when stored at -20°C.

Note: Plasmids are not sterile. For experiments where strict sterility is required, filtration with 0.22um filter is required.

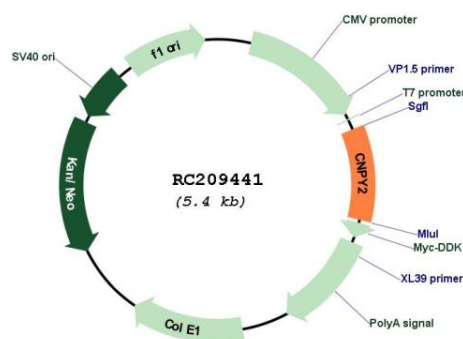
RefSeq: NM 014255.7

RefSeq Size: 1247 bp

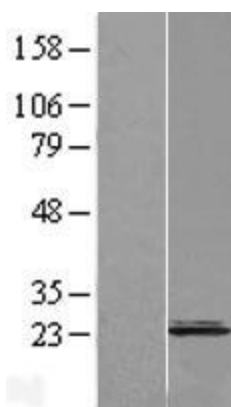
RefSeq ORF: 549 bp

Locus ID:	10330
UniProt ID:	Q9Y2B0
Cytogenetics:	12q13.3
MW:	20.7 kDa
Gene Summary:	Positive regulator of neurite outgrowth by stabilizing myosin regulatory light chain (MRLC). It prevents MIR-mediated MRLC ubiquitination and its subsequent proteasomal degradation. [UniProtKB/Swiss-Prot Function]

Product images:



Circular map for RC209441



Western blot validation of overexpression lysate (Cat# [LY402298]) using anti-DDK antibody (Cat# [TA50011-100]). Left: Cell lysates from untransfected HEK293T cells; Right: Cell lysates from HEK293T cells transfected with RC209441 using transfection reagent MegaTran 2.0 (Cat# [TT210002]).



Coomassie blue staining of purified CNPY2 protein (Cat# [TP309441]). The protein was produced from HEK293T cells transfected with CNPY2 cDNA clone (Cat# RC209441) using MegaTran 2.0 (Cat# [TT210002]).