

Product datasheet for RC209435

ELOVL5 (NM_021814) Human Tagged ORF Clone

Product data:

Product Type:	Expression Plasmids
Product Name:	ELOVL5 (NM_021814) Human Tagged ORF Clone
Tag:	Myc-DDK
Symbol:	ELOVL5
Synonyms:	dj483K16.1; HELO1; SCA38
Mammalian Cell Selection:	Neomycin
Vector:	pCMV6-Entry (PS100001)
E. coli Selection:	Kanamycin (25 ug/mL)
ORF Nucleotide Sequence:	>RC209435 representing NM_021814 Red=Cloning site Blue=ORF Green=Tags(s)

TTTTGTAATACGACTCACTATAGGGCGCCGGGAATTCGTCGACTGGATCCGGTACCGAGGAGATCTGCC
GCC**CGGATCGCC**

ATGGAACATTTTGATGCATCACTTAGTACCTATTTCAAGGCATTGCTAGGCCCTCGAGATACTAGAGTAA
AAGGATGGTTTCTTCTGGACAATTATATACCCACATTTATCTGCTCTGTCATATATTTACTAATTGTATG
GCTGGGACAAAATACATGAGGAATAAACAGCCATTCTCTTGCCGGGGGATTTTAGTGGTGATAACCTT
GGACTCACACTGCTGTCTGTATATGTTCTGTGAGTTAGTAACAGGAGTATGGGAAGGCAAATACAAC
TCTTCTGTCAGGGCACACGCACCCGAGGAGAATCAGATATGAAGATTATCCGTGTCCTCTGGTGGTACTA
CTTCTCCAAACTCATAGAATTTATGGACTTTTCTTTCATCCTGCGCAAGAACAACCACCAGATCAGG
GTCTGACAGTCTACCACCATGCCTCGATGCTGAACATCTGGTGGTTTGTGATGAACTGGTCCCTGCG
GCCACTCTATTTTGGTGCCACACTTAATAGCTTCATCCACGTCCTCATGTACTCTTACTATGGTTTGTG
GTCAGTCCCTTCCATGCGTCCATACCTCTGGTGAAGAAGTACATCACTCAGGGGAGCTGCTTCAGTTT
GTGCTGACAATCATCCAGACCAGCTGCGGGTCTCTGGCCGTGCACATTCCTCTTGGTTGGTTGTATT
TCCAGATTGGATACATGATTTCCCTGATTGCTCTCTTCAAACTTCTACATTGAGCTACAACAAGAA
AGGGCCCTCCCGAAGGAAAGACCACCTGAAGACCACCAGAATGGTCCATGGCTGCTGTGAATGGACAC
ACCAACAGCTTTTCACCCCTGAAAACAATGTGAAGCCAAGGAAGCTGCGGAAGGAT

ACGCGTACGCGGCCGCTCGAGCAGAAACTCATCTCAGAAGAGGATCTGGCAGCAAATGATATCCTGGATT
ACAAGGATGACGACGATAAGGTTTAA



[View online »](#)

Protein Sequence: >RC209435 representing NM_021814
Red=Cloning site Green=Tags(s)

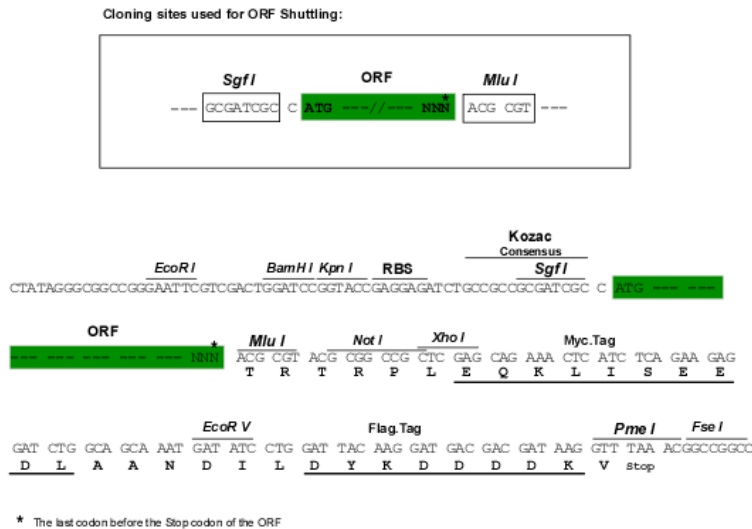
MEHFDASLSTYFKALLGPRDTRVKGWFLLDNYIPTFICSVIYLLIVWLGPKYMRNKQPFSCRGILVYVNL
 GLTLLSLYMFCELVTVGWEGKYNFFCQGTRTAGESDMKIIRVLWVYFYSKLIIEFMDTFFFILRKNNHQIT
 VLHVVYHHSMLNIWWFVMNWVPCGHSYFGATLNSFIHVLMSYSYGLSSVPSMRPWLWKKYITQGQLLQF
 VLTIIQTSCGVIWPCTFPLGWL YFQIGYIMISLIALFTNFYIQTYNKKGASRRKDHLDKHQNGSMAAVNGH
 TNSFSPLENNVKPRKLRKD

TRTRPLEQKLISEEDLAANDILDYKDDDDKV

Chromatograms: https://cdn.origene.com/chromatograms/ja1513_h08.zip

Restriction Sites: SgfI-MluI

Cloning Scheme:



ACCN: NM_021814

ORF Size: 897 bp

OTI Disclaimer: The molecular sequence of this clone aligns with the gene accession number as a point of reference only. However, individual transcript sequences of the same gene can differ through naturally occurring variations (e.g. polymorphisms), each with its own valid existence. This clone is substantially in agreement with the reference, but a complete review of all prevailing variants is recommended prior to use. [More info](#)

OTI Annotation: This clone was engineered to express the complete ORF with an expression tag. Expression varies depending on the nature of the gene.

Components: The ORF clone is ion-exchange column purified and shipped in a 2D barcoded Matrix tube containing 10ug of transfection-ready, dried plasmid DNA (reconstitute with 100 ul of water).

Reconstitution Method:

1. Centrifuge at 5,000xg for 5min.
2. Carefully open the tube and add 100ul of sterile water to dissolve the DNA.
3. Close the tube and incubate for 10 minutes at room temperature.
4. Briefly vortex the tube and then do a quick spin (less than 5000xg) to concentrate the liquid at the bottom.
5. Store the suspended plasmid at -20°C. The DNA is stable for at least one year from date of shipping when stored at -20°C.

RefSeq: [NM_021814.5](#)

RefSeq Size: 3003 bp

RefSeq ORF: 900 bp

Locus ID: 60481

UniProt ID: [Q9NYP7](#)

Cytogenetics: 6p12.1

Domains: ELO

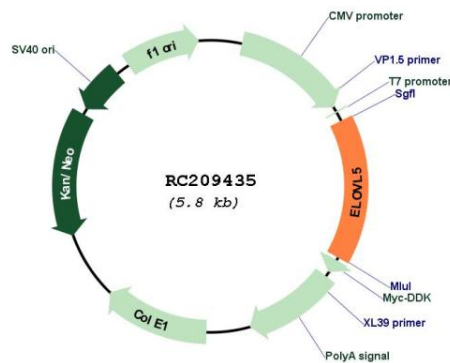
Protein Families: Transmembrane

Protein Pathways: Biosynthesis of unsaturated fatty acids

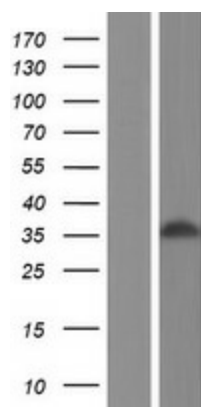
MW: 35.1 kDa

Gene Summary: This gene belongs to the ELO family. It is highly expressed in the adrenal gland and testis, and encodes a multi-pass membrane protein that is localized in the endoplasmic reticulum. This protein is involved in the elongation of long-chain polyunsaturated fatty acids. Mutations in this gene have been associated with spinocerebellar ataxia-38 (SCA38). Alternatively spliced transcript variants have been found for this gene. [provided by RefSeq, Sep 2014]

Product images:



Circular map for RC209435



Western blot validation of overexpression lysate (Cat# [LY411911]) using anti-DDK antibody (Cat# [TA50011-100]). Left: Cell lysates from untransfected HEK293T cells; Right: Cell lysates from HEK293T cells transfected with RC209435 using transfection reagent MegaTran 2.0 (Cat# [TT210002]).