

Product datasheet for **RC209433**

LZIC (NM_032368) Human Tagged ORF Clone

Product data:

Product Type: Expression Plasmids
 Product Name: LZIC (NM_032368) Human Tagged ORF Clone
 Tag: Myc-DDK
 Symbol: LZIC
 Mammalian Cell Selection: Neomycin
 Vector: pCMV6-Entry (PS100001)
 E. coli Selection: Kanamycin (25 ug/mL)
 ORF Nucleotide Sequence: >RC209433 ORF sequence
 Red=Cloning site Blue=ORF Green=Tags(s)

TTTTGTAATACGACTCACTATAGGGCGGCCGGAATTCGTCGACTGGATCCGGTACCGAGGAGATCTGCC
 GCC**CGCATCGCC**

ATGGCTTCAGAGGAAAGACAGAGACAAGCAAATTAAGCAGAATTTAGAAGAACAGTTGGATAGACTCA
 TGCAACAATTACAAGATCTGGAGGAATGCAGAGAGGAACCTTGATACAGATGAATATGAAGAAACCAAAAA
 GGAACCTCTGGAGCAACTAAGTGAATTTAATGATTCACATAAGAAAATATGCTGGAAATAGACTTTG
 GTAGATGAACAAAGTGAATGCAGCTGGCTATTCAGGCAGCTATCAGCCAGGCCTTTAAACCCAGAGG
 TCATCAGATTGTTTCAAAGAAACAACCCAGGTCAGCTTCGACAAGGTTAGCAGAGATGGATAGAGATCT
 GATGGTAGGAAAGCTGGAAAGAGACCTGTACACTCAACAGAAAGTGGAGATACTAACAGCTCTTAGGAAA
 CTTGGAGAGAAGCTGACTGCAGATGATGAGCCTTCTTGTGAGCAATGCAGGTGCTATACTCAGCCAGT
 TTGAGAAAGTCTCTACAGACCTGGCTCTGGAGACAAAATTTCTGCTCTGGCAAGTTTTGAGGTTGAAAA
 AACAAAAAA

ACGCGTACGCGGCCGCTCGAGCAGAAACTCATCTCAGAAGAGGATCTGGCAGCAATGATATCCTGGATT
 ACAAGGATGACGACGATAAGGTTTAA

Protein Sequence: >RC209433 protein sequence
 Red=Cloning site Green=Tags(s)

MASRGKTETSKLKQNLEEQLDRLMQQLQDLEECREELDTDEYEETKKETLEQLSEFNDSLKKIMSGNMTL
 VDELSGMQLAIQAAISQAFKTPVIRLFAKKQPGQLRTRLAEMDRDLVVGKLERDLYTQQKVEILTALRK
 LGEKLTADDEAFLSANAGAILSQFEKVSTDLGSGDKILALASFEVEKTKK

TRTRPLEQKLISEEDLAANDILDYKDDDDKV

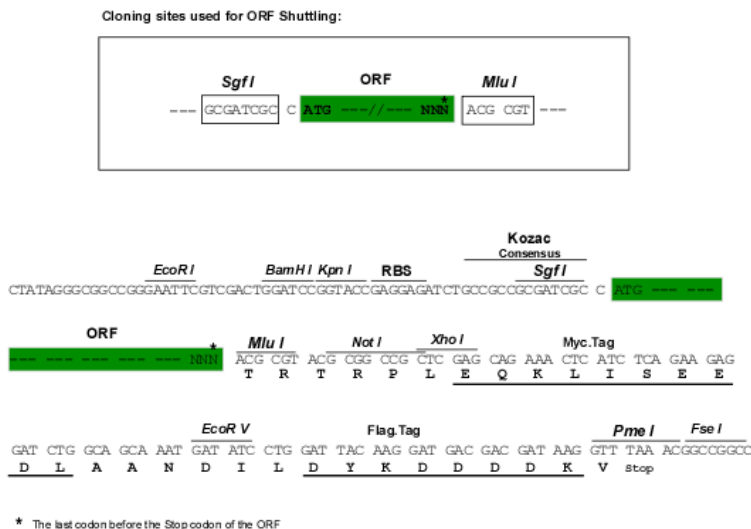
Chromatograms: https://cdn.origene.com/chromatograms/mk6355_e10.zip



[View online »](#)

Restriction Sites: SgfI-MluI

Cloning Scheme:



ACCN: NM_032368

ORF Size: 570 bp

OTI Disclaimer: The molecular sequence of this clone aligns with the gene accession number as a point of reference only. However, individual transcript sequences of the same gene can differ through naturally occurring variations (e.g. polymorphisms), each with its own valid existence. This clone is substantially in agreement with the reference, but a complete review of all prevailing variants is recommended prior to use. [More info](#)

OTI Annotation: This clone was engineered to express the complete ORF with an expression tag. Expression varies depending on the nature of the gene.

Components: The ORF clone is ion-exchange column purified and shipped in a 2D barcoded Matrix tube containing 10ug of transfection-ready, dried plasmid DNA (reconstitute with 100 ul of water).

Reconstitution Method:

1. Centrifuge at 5,000xg for 5min.
2. Carefully open the tube and add 100ul of sterile water to dissolve the DNA.
3. Close the tube and incubate for 10 minutes at room temperature.
4. Briefly vortex the tube and then do a quick spin (less than 5000xg) to concentrate the liquid at the bottom.
5. Store the suspended plasmid at -20°C. The DNA is stable for at least one year from date of shipping when stored at -20°C.

RefSeq: [NM_032368.5](#)

RefSeq Size: 1484 bp

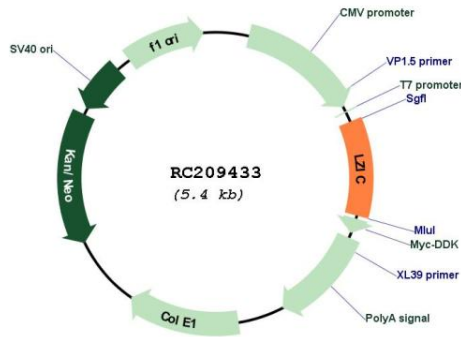
RefSeq ORF: 573 bp

Locus ID: 84328

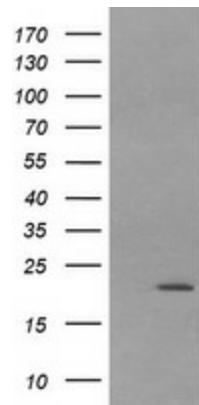
UniProt ID: [Q8WZA0](#)

Cytogenetics: 1p36.22
 MW: 21.5 kDa

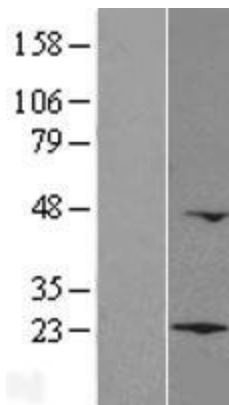
Product images:



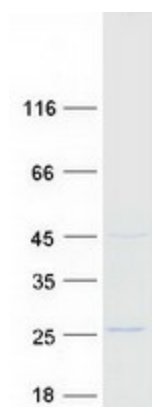
Circular map for RC209433



HEK293T cells were transfected with the pCMV6-ENTRY control (Cat# [PS100001], Left lane) or pCMV6-ENTRY LZIC (Cat# RC209433, Right lane) cDNA for 48 hrs and lysed. Equivalent amounts of cell lysates (5 ug per lane) were separated by SDS-PAGE and immunoblotted with anti-LZIC (Cat# [TA505941]). Positive lysates [LY410162] (100ug) and [LC410162] (20ug) can be purchased separately from OriGene.



Western blot validation of overexpression lysate (Cat# [LY410162]) using anti-DDK antibody (Cat# [TA50011-100]). Left: Cell lysates from untransfected HEK293T cells; Right: Cell lysates from HEK293T cells transfected with RC209433 using transfection reagent MegaTran 2.0 (Cat# [TT210002]).



Coomassie blue staining of purified LZIC protein (Cat# [TP309433]). The protein was produced from HEK293T cells transfected with LZIC cDNA clone (Cat# RC209433) using MegaTran 2.0 (Cat# [TT210002]).