

Product datasheet for **RC209429**

STAT5B (NM_012448) Human Tagged ORF Clone

Product data:

Product Type:	Expression Plasmids
Product Name:	STAT5B (NM_012448) Human Tagged ORF Clone
Tag:	Myc-DDK
Symbol:	STAT5B
Synonyms:	GHSID2; STAT5
Mammalian Cell Selection:	Neomycin
Vector:	pCMV6-Entry (PS100001)
E. coli Selection:	Kanamycin (25 ug/mL)



[View online »](#)

ORF Nucleotide Sequence:

>RC209429 representing NM_012448
 Red=Cloning site Blue=ORF Green=Tags(s)

TTTTGTAATACGACTCACTATAGGGCGGCCGGAATTCGTCGACTGGATCCGGTACCGAGGAGATCTGCC
 GCC**CGCATCGCC**

ATGGCTGTGTGGATACAAGCTCAGCAGCTCCAAGGAGAAGCCCTTCATCAGATGCAAGCGTTATATGGCC
 AGCATTTTCCATTGAGGTGCGGCATTATTTATCCCAGTGGATTGAAAGCCAAGCATGGGACTCAGTAGA
 TCTTGATAATCCACAGGAGAACATTAAGGCCACCCAGCTCCTGGAGGGCCTGGTGCAGGAGCTGCAGAAG
 AAGGCAGAGCACCAGGTGGGGAAGATGGGTTTTACTGAAGATCAAGCTGGGGCACTATGCCACACAGC
 TCCAGAACACGTATGACCGCTGCCCATGGAGCTGGTCCGCTGCATCCGCCATATATTGTACAATGAACA
 GAGGTTGGTCCGAGAAGCCAACAATGGTAGCTCTCCAGCTGGAAGCCTTGCTGATGCCATGTCCCAGAAA
 CACCTCCAGATCAACCAGACGTTTGAGGAGCTGCGACTGGTCACGCAGGACACAGAGAATGAGTTAAAAA
 AGCTGCAGCAGACTCAGGAGTACTTCATCATCCAGTACCAGGAGAGCCTGAGGATCCAAGCTCAGTTTGG
 CCCGCTGGCCAGCTGAGCCCCAGGAGCGTCTGAGCCGGGAGACGGCCCTCCAGCAGAAGCAGGTGTCT
 CTGGAGGCTGGTTGCAGCGTGAGGCACAGACACTGCAGCAGTACCGCTGGAGCTGGCCGAGAAGCACC
 AGAAGACCCTGCAGCTGCTGCGGAAGCAGCAGACCATCATCTGGATGACGAGCTGATCCAGTGGAGCG
 GCGGCAGCAGCTGGCCGGGAACGGCGGGCCCCCGAGGGCAGCCTGGACGTGCTACAGTCCCTGGTGTGAG
 AAGTTGGCCGAGATCATCTGGCAGAACCGGCAGCAGATCCGCAGGGCTGAGCACCTCTGCCAGCAGCTGC
 CCATCCCCGGCCAGTGGAGGAGATGCTGGCCGAGGTCAACGCCACCATCACGGACATTATCTCAGCCCT
 GGTGACCAGCACGTTTCATTGAGAAGCAGCCTCCTCAGGTCTGAAGACCCAGACCAAGTTTGCAGCC
 ACTGTGCCCTGCTGGTGGGCGGAAGCTGTAACGTGCACATGAACCCCCCAGGTGAAGGCCACCATCA
 TCAGTGAGCAGCAGGCCAAGTCTCTGCTCAAGAACGAGAACACCCGCAATGATTACAGTGGCGCATCTT
 GAACAACCTGCTGCGTCATGGAGTACCACCAAGCCACAGGCACCCTTAGTGCCCACTTCAGGAATATGTCC
 CTGAAACGAATTAAGAGTCCAGACCGTCTGGGGCAGAGTCGGTGACAGAAGAAAAATTTACAATCTGT
 TTGAATCCAGTTCAGTGTGGTGGAAATGAGCTGGTTTTTCAAGTCAAGACCCTGTCCCTGCCAGTGGT
 GGTGATCGTTCATGGCAGCCAGGACAACAATGCGACGGCCACTGTTCTCTGGGACAATGCTTTTGCAGAG
 CCTGGCAGGGTGCCATTTGCCGTGCTGACAAAGTGTGTGGCCACAGCTGTGTGAGGCGCTCAACATGA
 AATTCAAGGCCGAAGTGCAGAGCAACCGGGCCTGACCAAGGAGAACCTCGTGTCTGCGCAGAAAAT
 GTTCAACAACAGCAGCAGCCACCTGGAGACTACAGTGGCCTGTCTGTCTGCTGGTCCCAGTTCAACAGG
 GAGAATTTACCAGGACGGAATTACACTTCTGGCAATGGTTTACGGTGTGATGGAAGTGTAAAAAAAC
 ATCTCAAGCCTCATTGGAATGATGGGGCATTGTTGGGTTTGTAAACAAGCAACAGGCCCATGACCTACT
 CATTAAACAAGCCAGATGGGACCTTCTCCTGAGATTTCAGTGAAGTTCAGAAATTGGCGGCATCACCATTGCT
 TGGAAGTTTATTCTCAGGAAAGAATGTTTTGGAATCTGATGCCTTTTACCACCAGAGACTTCTCCATTC
 GGTCCCTAGCCGACCGCTTGGGAGACTTGAATTACCTTATCTACGTGTTTCTGATCGGCCAAAAGATGA
 AGTATACTCCAAATACTACACACCAGTTCCTGCGAGTCTGCTACTGCTAAAGCTGTTGATGGATACGTG
 AAGCCACAGATCAAGCAAGTGGTCCCTGAGTTTGTGAACGCATCTGCAGATGCCGGGGCGGCAGCGCCA
 CGTACATGGACCAGGCCCTCCAGCTGTGTGTCAGGCTCACTATAACATGTACCCACAGAACCC
 TGACTCAGTCTTGACACCGATGGGACTTCGATCTGGAGGACACAATGGACGTAGCGCGCGTGTGGAG
 GAGCTCCTGGCCGCGCAATGGACAGTCAAGTGGATCCCGCACGCACAATCG

ACGCGTACGCGGCCGCTCGAGCAGAACTCATCTCAGAAGAGGATCTGGCAGCAAATGATATCCTGGATT
 ACAAGGATGACGACGATAAGGTTTAA

Protein Sequence: >RC209429 representing NM_012448
 Red=Cloning site Green=Tags(s)

```

MAVWIIQAQQLQGEALHQMQUALYGQHFPIEVRHYLSQWIESQAWDSVDLNDNPQENIKATQLLEGLVQELQK
KAEHQVGEDGFLKIKLGHYATQLQNTYDRCPMELVRCIRHILYNEQRLVREANNGSSPAGSLADAMSQK
HLQINQTFEELRLVTQDTENELKKLQQTQEYFIIQYQESLRIQAQFGPLAQLSPQERLSRETALQQKQVS
LEAWLQREAAQTLQQYRVELAEKHQKTLQLLRQQTIIIDDELIQWKRRQQLAGNGGPPPEGSLDVLQSWCE
KLAEEIIWQNRQQIRRAEHLCCQLPIPGPVEEMLAEVNATITDIIISALVTSTFIIIEKQPPQVLKTQTKFAA
TVRLLVGGKLNVMNPPQVKATIISEQQAKSLLKNENTRNDYSGEILNNCCVMEYHQATGTLSAHFRNMS
LKRIKRSRRGAESVTEEFILFESQFSVGGNELVFQVKTLVSLPVVVIVHGSQDNNATATVLDWNAFAE
PGRVPPFAVPDKVLWPQLCEALNMKFKAEVQSNRGLTKENLVFLAQKLFNNSSSHLEDYSGLSVSWSQFNR
ENLPGRNYTFWQWFDGMEVLKKHLKPHWNDGAILGFVNKQQAHDLLINKPDGTFLLRFSDSEIGGITIA
WKFDQSQERMFWNLMPTTRDFSIRSLADRLGDLNLIYVFPDRPKDEVYSKYYPVPCESATAKAVDGYV
KPQIKQVVPEFVNASADAGGGSATYMDQAPSPAVCPQAHYNYMYPQNPDSVLDTDGDFLEDTMDVARRVE
ELLGRPMDSQWIPHAQS
  
```

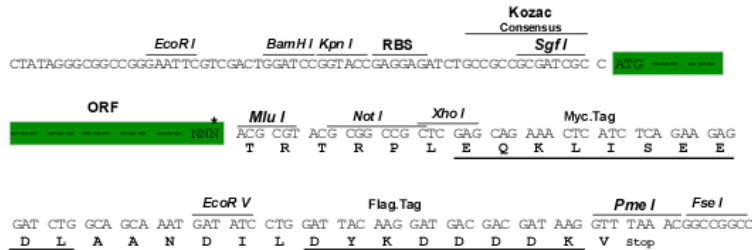
TRTRPLEQKLI SEEDLAANDILDYKDDDDKV

Chromatograms: https://cdn.origene.com/chromatograms/mg3554_d09.zip

Restriction Sites: Sgfl-Mlul

Cloning Scheme:

Cloning sites used for ORF Shutting:



* The last codon before the Stop codon of the ORF

ACCN: NM_012448

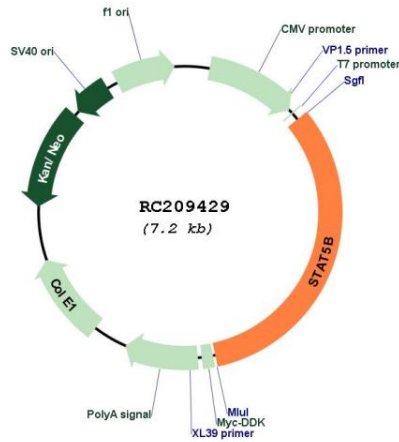
ORF Size: 2361 bp

OTI Disclaimer: Due to the inherent nature of this plasmid, standard methods to replicate additional amounts of DNA in E. coli are highly likely to result in mutations and/or rearrangements. Therefore, OriGene does not guarantee the capability to replicate this plasmid DNA. Additional amounts of DNA can be purchased from OriGene with batch-specific, full-sequence verification at a reduced cost. Please contact our customer care team at custsupport@origene.com or by calling 301.340.3188 option 3 for pricing and delivery.

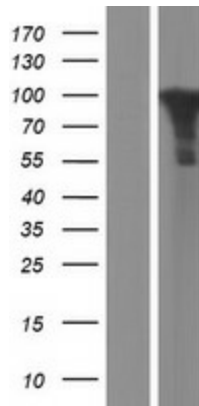
The molecular sequence of this clone aligns with the gene accession number as a point of reference only. However, individual transcript sequences of the same gene can differ through naturally occurring variations (e.g. polymorphisms), each with its own valid existence. This clone is substantially in agreement with the reference, but a complete review of all prevailing variants is recommended prior to use. [More info](#)

OTI Annotation:	This clone was engineered to express the complete ORF with an expression tag. Expression varies depending on the nature of the gene.
Components:	The ORF clone is ion-exchange column purified and shipped in a 2D barcoded Matrix tube containing 10ug of transfection-ready, dried plasmid DNA (reconstitute with 100 ul of water).
Reconstitution Method:	<ol style="list-style-type: none">1. Centrifuge at 5,000xg for 5min.2. Carefully open the tube and add 100ul of sterile water to dissolve the DNA.3. Close the tube and incubate for 10 minutes at room temperature.4. Briefly vortex the tube and then do a quick spin (less than 5000xg) to concentrate the liquid at the bottom.5. Store the suspended plasmid at -20°C. The DNA is stable for at least one year from date of shipping when stored at -20°C.
Note:	Plasmids are not sterile. For experiments where strict sterility is required, filtration with 0.22um filter is required.
RefSeq:	NM_012448.4
RefSeq Size:	5171 bp
RefSeq ORF:	2364 bp
Locus ID:	6777
UniProt ID:	P51692
Cytogenetics:	17q21.2
Domains:	SH2, STAT
Protein Families:	Druggable Genome, ES Cell Differentiation/IPS, Stem cell relevant signaling - JAK/STAT signaling pathway, Transcription Factors
Protein Pathways:	Acute myeloid leukemia, Chemokine signaling pathway, Chronic myeloid leukemia, ErbB signaling pathway, Jak-STAT signaling pathway, Pathways in cancer
MW:	89.7 kDa
Gene Summary:	The protein encoded by this gene is a member of the STAT family of transcription factors. In response to cytokines and growth factors, STAT family members are phosphorylated by the receptor associated kinases, and then form homo- or heterodimers that translocate to the cell nucleus where they act as transcription activators. This protein mediates the signal transduction triggered by various cell ligands, such as IL2, IL4, CSF1, and different growth hormones. It has been shown to be involved in diverse biological processes, such as TCR signaling, apoptosis, adult mammary gland development, and sexual dimorphism of liver gene expression. This gene was found to fuse to retinoic acid receptor-alpha (RARA) gene in a small subset of acute promyelocytic leukemias (APLL). The dysregulation of the signaling pathways mediated by this protein may be the cause of the APLL. [provided by RefSeq, Jul 2008]

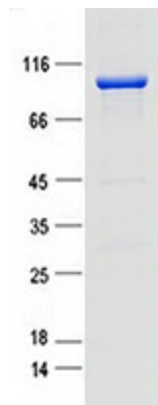
Product images:



Circular map for RC209429



Western blot validation of overexpression lysate (Cat# [LY415754]) using anti-DDK antibody (Cat# [TA50011-100]). Left: Cell lysates from untransfected HEK293T cells; Right: Cell lysates from HEK293T cells transfected with RC209429 using transfection reagent MegaTran 2.0 (Cat# [TT210002]).



Coomassie blue staining of purified STAT5B protein (Cat# [TP309429]). The protein was produced from HEK293T cells transfected with STAT5B cDNA clone (Cat# RC209429) using MegaTran 2.0 (Cat# [TT210002]).