

## Product datasheet for **RC209428**

### UVRAG (NM\_003369) Human Tagged ORF Clone

#### Product data:

Product Type:	Expression Plasmids
Product Name:	UVRAG (NM_003369) Human Tagged ORF Clone
Tag:	Myc-DDK
Symbol:	UVRAG
Synonyms:	DHTX; p63; VPS38
Mammalian Cell Selection:	Neomycin
Vector:	pCMV6-Entry (PS100001)
E. coli Selection:	Kanamycin (25 ug/mL)



[View online »](#)

**ORF Nucleotide  
Sequence:**

>RC209428 ORF sequence  
 Red=Cloning site Blue=ORF Green=Tags(s)

TTTTGTAATACGACTCACTATAGGGCGGCCGGGAATTCGTGCGACTGGATCCGGTACCGAGGAGATCTGCC  
 GCC**CGGATCGCC**

ATGAGCGCCTCCGCGTCGGTCGGGGCCAGGTCCCCAGCCACCCCGGGCCCGCGCTGCTCTGCCTC  
 CCGTTCTGCCGCGCGGCCCTGCATGTGGAGCTGCCGTCTCAGCAGCGGCGTCTTCGACATCTTCGGAA  
 CATTGCTGCCCGAACATTGTTAATAGAAATGGCCATCAGCTCCTTGATACCTACTTTACTTCACTTCACTTG  
 TGTAGTACTGAAAAGATATATAAAGAAATTTATAGAAGTGAAGTGATTAAGAATTCCTTGAATCCCACGT  
 GGCGAAGTCTCGATTTTGGAAATATGCCAGACCGTCTTGATACATCTGTGTCTTGTCTTTCGTGGTGAAGAT  
 ATGGGGTGGAAAGGAGAATCTACCAGCTGTTGATTGAATGGAAAGTCTGTTTGGATGGCTGAAATAC  
 TTGGGTCAGCAGATTCATGCCGAAACAAAATGAAATAATTTTGGGCTGAATGATGGATACTATGGT  
 CTCATTTGAACATAAGGGTTATCAAATGCTCAGAAGACTATTCTTCTGCAGGTGGATCAGAAGTGT  
 TCGCAATTCCTACGATGTCTTCTTTGCTACGGCTTCATAGAGCCAGTGTGCAATTAACAGACTCAG  
 GTAAGTGTTCAGAAAATTGGAAAGGAAATGAAGAAAACTAAGACTCACATCTACAAGCAATGAACTGA  
 AAAAAAAAAAGTGAATGCCTGCAGTTAAAAATTTGGTGCTTCAGAATGAACTGGAACGGCAGAAAGAAAGC  
 TTTGGGACGGGAGGTGGCATTACTGCATAAGCAACAAATTCATTACAAGACAAAGGAAGTGCATTTTCA  
 GCTGAGCACCTCAAACCTCAACTCCAGAAGGAATCCCTAAATGAGCTGAGGAAGGAGTGCCTGCAAAAA  
 GAGAAGTCTTCTGAAGACTAATGCTCAGTTGACAATTCGTTGCAGGCAGTTACTCTCTGAGCTTTCCTA  
 CATTTACCCTATTGATTTGAATGAACATAAGGATTACTTTGTATGCGGTGTCAAGTTGCCTAATTTCTGAG  
 GACTTCCAAGCAAAGATGATGGAAGCATTGCTGTTGCCCTTGGTTATACTGCACATCTGGTCTCCATGA  
 TTTCTTTTTCTACAAGTGCCCTCAGATATCCTATAATTCATAAGGGGTCTAGATCAACAATCAAAGA  
 CAATATCAATGACAAAAGTACGGAAAAGGAGAGAGATTTCCACTGTATCCAAAAGGAGGGGAGAAGTTG  
 CAGTTTGATTATGGTGTCTATCTTCTGAACAAAAATATAGCACAGCTAAGATATCAACATGGACTAGGGA  
 CTCCAGACTTGCGGCAAACCTTCCCAACTGAAAAACTCATGGAGCATGGACTAATGGTCAGGTGTGA  
 CAGACATCACACCTCCAGTGCAATCCCTGTTTCTAAGAGACAAAGCTCCATATTTGGGGGTGAGATGTA  
 GGCTTCTCTGGGGGATCCCTTACCAGACAAAGGACATCGAAAACGGGCCAGCTCTGAGAATGAGAGAC  
 TTCAGTACAAAACCCCTCCTCCAGTTACAACCTCAGCATTAGCCAGCCTGTGACCACCGTCCCCTCCAT  
 GGGAGAGACCGAGAGAAAGATAACATCTCTATCCTCCTCCTTGGATACCTCCTTGGACTTCTCAAAGAA  
 AACAGAAAAAAGGAGAGGATCTAGTTGGCAGCTTAAACGGAGGCCACGCGAATGTGCACCCTAGCCAAG  
 AACAGGAGAAGCCCTCCTCCGGCACCGGCCACAGTCAATGGCACTCTCCTACCCAGCGAGCAGGCCGG  
 GTCGCGCAGTGTCCAGCTTCCAGGCGAGTTCACCCAGTCTCAGAAGCTGAGCTCTGCTGTACTGTGGAG  
 CAAGCAGAAGAAATCATCGGGCTGGAAGCCACAGGTTTCGCTCAGGTGATCAGCTAGAAGCATTAACT  
 GCATCCCAGTGGACAGTGTGTGGCAGTAGAGTGTGACGAACAAGTTCTGGGAGAATTTGAAGAGTTCTC  
 CCGAAGGATCTATGCACTGAATGAAAACGTATCCAGCTTCCGCCGGCCGCGCAGGAGTTCGGATAAG

**ACGCGT**ACGCGGCCGCTCGAGCAGAACTCATCTCAGAAGAGGATCTGGCAGCAATGATATCCTGGATT  
 ACAAGGATGACGACGATAAGGTTTAA

**Protein Sequence:** >RC209428 protein sequence  
Red=Cloning site Green=Tags(s)

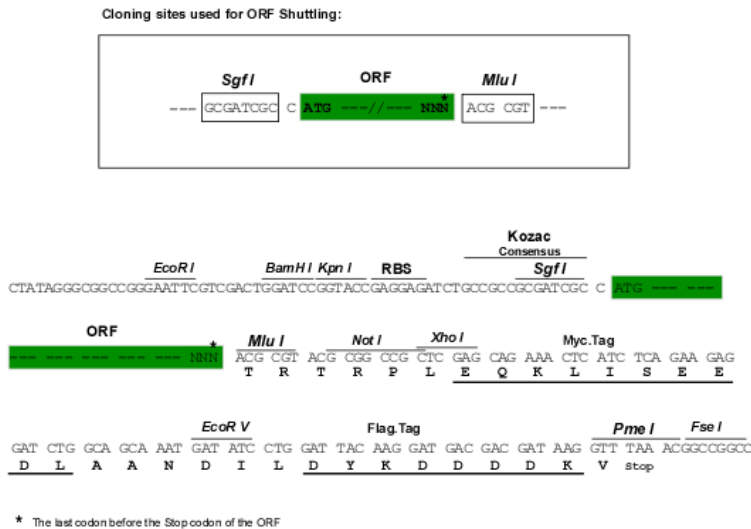
MSASASVGGQVPQPPPGPAAALPPGSAARALHVELPSQQRRRLRHLRNIAARNIVNRNGHQLLDITYFTLHL  
 CSTEKIYKEFYRSEVIKNSLNPTWRSLDFGIMPDRLDTSVSCFVVKIWWGKNIYQLLIEWKVCLDGLKY  
 LGQQIHARNQNEIIFGLNDGYGAPFEHKGYSNAQKTILLQVDQNCVRNSYDVFSLRLHRAQCAIKQTQ  
 VTVQKIGKEIEEKLRLTSTSNELKKKSECLQLKILVLQNELERQKKALGREVALLHKQIALQDKGSAFS  
 AEHLKLQKESLNELRKECTAKRELFLKTNAQLTIRCRQLLSELSYIYPIDLNEHKDYFVCGVKLPNSE  
 DFQAKDDGSIIVALGYTAHLVSMISFFLQVPLRYPIIHKGSRSTIKDNINDKLTEKEREFPYKPGGEKL  
 QFDYGVYLLNKNIAQLRYQHGLGTPDLRQTLPNLKNFMEHGLMVRCDRHHTSSAIPVPKRQSSIFGGADV  
 GFSGGIPSPDKGHRKRASSENERLQYKTPPPSYNSALAQPVTTVPSMGETERKITSSSLDTSDFSKE  
 NKKKGEDLVGSLNGGHANVHPSQEQGEALSGHRATVNGTLLPSEQASASVQLPGEFHPVSEALCCTVE  
 QAEEIIGLEATGFASGDQLEAFNCIPVDSAVAVECDEQVLGEFEEFSRRIYALNENVSSFRPRSSDK

TRTRPLEQKLISEEDLAANDILDYKDDDDKV

**Chromatograms:** [https://cdn.origene.com/chromatograms/mk6251\\_e05.zip](https://cdn.origene.com/chromatograms/mk6251_e05.zip)

**Restriction Sites:** SgfI-MluI

**Cloning Scheme:**



**ACCN:** NM\_003369

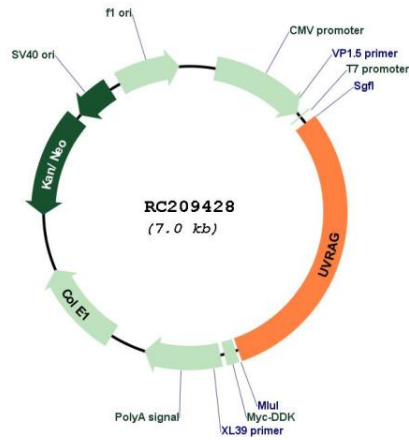
**ORF Size:** 2097 bp

**OTI Disclaimer:** The molecular sequence of this clone aligns with the gene accession number as a point of reference only. However, individual transcript sequences of the same gene can differ through naturally occurring variations (e.g. polymorphisms), each with its own valid existence. This clone is substantially in agreement with the reference, but a complete review of all prevailing variants is recommended prior to use. [More info](#)

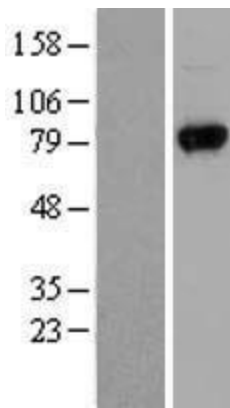
**OTI Annotation:** This clone was engineered to express the complete ORF with an expression tag. Expression varies depending on the nature of the gene.

<b>Components:</b>	The ORF clone is ion-exchange column purified and shipped in a 2D barcoded Matrix tube containing 10ug of transfection-ready, dried plasmid DNA (reconstitute with 100 ul of water).
<b>Reconstitution Method:</b>	<ol style="list-style-type: none"><li>1. Centrifuge at 5,000xg for 5min.</li><li>2. Carefully open the tube and add 100ul of sterile water to dissolve the DNA.</li><li>3. Close the tube and incubate for 10 minutes at room temperature.</li><li>4. Briefly vortex the tube and then do a quick spin (less than 5000xg) to concentrate the liquid at the bottom.</li><li>5. Store the suspended plasmid at -20°C. The DNA is stable for at least one year from date of shipping when stored at -20°C.</li></ol>
<b>Note:</b>	Plasmids are not sterile. For experiments where strict sterility is required, filtration with 0.22um filter is required.
<b>RefSeq:</b>	<a href="#">NM_003369.4</a>
<b>RefSeq Size:</b>	5166 bp
<b>RefSeq ORF:</b>	2100 bp
<b>Locus ID:</b>	7405
<b>UniProt ID:</b>	<a href="#">Q9P2Y5</a>
<b>Cytogenetics:</b>	11q13.5
<b>Domains:</b>	C2
<b>MW:</b>	78.2 kDa
<b>Gene Summary:</b>	This gene complements the ultraviolet sensitivity of xeroderma pigmentosum group C cells and encodes a protein with a C2 domain. The protein activates the Beclin1-PI(3)KC3 complex, promoting autophagy and suppressing the proliferation and tumorigenicity of human colon cancer cells. Chromosomal aberrations involving this gene are associated with left-right axis malformation and mutations in this gene have been associated with colon cancer. [provided by RefSeq, Jul 2008]

Product images:



Circular map for RC209428



Western blot validation of overexpression lysate (Cat# [LY418725]) using anti-DDK antibody (Cat# [TA50011-100]). Left: Cell lysates from untransfected HEK293T cells; Right: Cell lysates from HEK293T cells transfected with RC209428 using transfection reagent MegaTran 2.0 (Cat# [TT210002]).