

## Product datasheet for **RC209420**

### Exportin 5 (XPO5) (NM\_020750) Human Tagged ORF Clone

#### Product data:

**Product Type:** Expression Plasmids  
**Product Name:** Exportin 5 (XPO5) (NM\_020750) Human Tagged ORF Clone  
**Tag:** Myc-DDK  
**Symbol:** Exportin 5  
**Synonyms:** exp5  
**Mammalian Cell Selection:** Neomycin  
**Vector:** pCMV6-Entry (PS100001)  
**E. coli Selection:** Kanamycin (25 ug/mL)  
**ORF Nucleotide Sequence:** >RC209420 representing NM\_020750  
Red=Cloning site Blue=ORF Green=Tags(s)

TTTTGTAATACGACTCACTATAGGGCGGCCGGAATTCGTCGACTGGATCCGGTACCGAGGAGATCTGCC  
GCC**CGATCGCC**

ATGGCGATGGATCAAGTAAACGCGCTGTGCGAGCAGCTGGTAAAAGCGGTGACGGTCATGATGGACCCCA  
ACTCCACCCAGCGCTACCGGCTGGAAGCCCTCAAGTTTTGTGAGGAGTTAAAGAAAAGTGCCTATCTG  
TGTCCTCCGTGGCTTGGCTGAGAAAACACAAGTTGCCATCGTCAGACATTTTGGCCTTCAGATC  
CTGGAACACGTTGTCAAGTTTCGGTGAACGGCATGTCTCGATTGGAGAAGGTGTATCTGAAGAACAGTG  
TCATGGAGCTGATTGCAATGGAACATTGAACATTTTGAAGAGGAGAACCATATTAAGATGCTCTGTC  
TCGAATTGTAGTGAAAATGATCAAGCGAGAGTGGCCACAGCATTGGCCTGACATGCTAATAGAATTGGAC  
ACTCTTTCCAAAACAAGGGGAAAACACAGACAGAATTGGTGTGTTATCCTTTTGGCGACTGGCAGAGGATG  
TAGTGACTTTTCAGACACTTCCCCCTCAAAGAAGAAGGGACATCCAGCAAACATTAACCCAGAACATGGA  
AAGGATCTTCAGTTTTCTGCTTAACACACTTCAAGAAAATGTAACAAGTATCAGCAAGTGAAGACAGAT  
ACTTCTCAGGAGTCAAAGGCGCAAGCAAACACTGTCGAGTAGGAGTTGCAGCACTGAATACTCTAGCAGGCT  
ATATTGACTGGGTGTCTATGAGTCACATCACTGCTGAAAACACTGTAACCTCCTGGAGACTGTGTTTGTCT  
GTTGAATGAACAGGAACCTCAGTTGGGAGCCGCTGAGTGTCTTCTCATTGCAGTCAGCAGAAAAGGCAAG  
TTGGAAGACCGGAAGCCCTTGATGGTCTTATTTGGAGATGTTGCCATGCATTATATACTCTCCGCCGCAC  
AGACTGCTGATGGAGGAGTTTGGTAGAAAAACACTACGCTCTTCTGAAGAGGCTCTGTCAAGGTGTTGTG  
TGCCTGGCAATCAGCTGTGTGCATTGCTGGGTGCAGATTCTGATGTAGAAAACACCATCAAACCTTTGGA  
AAATACCTGGAATCTTTTCTGCTTTCACAACCCATCCAAGTCAAGTCTTCTACGCTCTTCAACTCAGATGA  
CTTGGGGAGCCCTCTCAGGCATGAAATCCTGTCCCGTATCCTTTGCTATTAGCAATAATACAAAATA  
TCTTCGTGCTTCCATGACTAACTTGGTCAAGATGGGCTTTCCTTCTAAAACAGACAGCCCTAGCTGTGAA  
TATTCTCGGTTTGATTTGATAGCGATGAGGACTTCAATGCTTTCTTCAACTCCTCCCGAGCACAACAAG  
GAGAGGTGATGAGTTGGCATGTCGTTTGGATCCCAAACTAGCTTCCAGATGGCTGGGAGTGGCTAAA  
GTATCAACTATCAACTTTTCTTGATGCTGTTCTGTGAATCTTGTCTGCAGTTGGAACGGAGAAGGA



AGCCTCTGTTCCGCTTTCTCACCTTCATTCGTGCAGTGGGAAGCCATGACTCTTTTTTTGGAAAAGTGTTA  
TCACCCAGATGTTTTGAACACTAAATAGAGAAGAAATTCCTGTTAATGATGGAATAGAGCTATTGCAGAT  
GGTTCTGAACTTTGATACCAAGGATCCCCTCATCTGTCTGCCTCCTACTAATGTCTCTGCACCTTTT  
CCATTTGTACCTACAGACCAGAGTTCCCTGCCCCAGGCTTTCTCTAAGCTATTTTCATCTGTCACTTTTG  
AACTGTTGAAGAAAGTAAGGCCCCAGAACCCGGGCAGTGAGGAATGTGAGGAGGCATGCTTGTTCCTC  
CATCATCAAGATGTGTCGTGACTACCCCAAGCTGTGTGTCGCCAATTTTGACATGCTTTATAACCATGTG  
AAGCAACTCCTCTCCAATGAGCTACTCCTGACACAAATGGAGAAGTGTGCCCTCATGGAAGCCCTGGTTC  
TCATTAGCAACCAATTTAAGAACTACGAGCGTCAGAAGGTGTTCCCTAGAGGAGCTGATGGCACCAGTGGC  
CAGCATCTGGCTTTCTCAAGACATGCACAGAGTGTGTGATGTTGATGCTTTTATTGCGTATGTGGGT  
ACAGATCAGAAGAGCTGTGACCCAGGCCTGGAGGATCCGTGTGGCTTAAACCGTGCACGAATGAGCTTTT  
GTGTATACAGCATTCTGGGTGTGGTGAACGAACCTGTGCGCCACTGACCTAGAAGAGGCCAAAGCTGG  
GGGATTTGTGGTGGTTATACATCCAGTGGAAATCCAATCTTCCGTAACCCCTGCACAGAGCAGATTCTG  
AAACTTCTTGACAATTTGCTTGCCTTATAAGAACCACAATACATTATATGCACCAGAAATGCTAGCCA  
AAATGGCAGAGCCTTCCCAAGGCTCTGGATATGCTTGACGCGGAAAAATCTGCTATATTAGGATTACC  
TCAACCTCTCTTGAACTCAATGACTCTCCTGTCTTCAAACCGTCTTGAAAGAATGCAGCGTTTCTTC  
TCTACCCTCTATGAAAAGTGTTCATATCCTAGGGAAGGCAGGCCCTTCCATGCAGCAAGACTTCTATA  
CTGTGGAGGACCTTGCTACCCAGCTTCTCAGCTCAGCCTTTGTCAACTTGAACAATATTCCTGACTACCG  
ACTCAGACCCATGCTTCGTGCTTTGTAAGCCTCTGGTGTCTTCTGTCCCCCAGAGCACTATGAAGCC  
CTGGTATCCCCATCCTCGGACCTTTTTACCTACCTCCATATGAGGCTTTCTCAGAAATGGCAAGTTA  
TCAACCAAGGAGCCTGCTGTGTGGAGAAGATGAGGCTGCAGATGAAAACCCAGAGTCTCAAGAGATGCT  
GGAGGAGCAACTGGTGGAGTGTAAACCCGAGAAGTCAATGACCTAATCACGTTTGTGTGTTTCAAAG  
AAGGGTGTGACCACAGTGTGCTCCCCAGCAGATGGAGACGATGAAGAAATGATGGCCACAGAGGTCA  
CCCCCTCAGCTATGGCAGAGCTTACAGACCTGGGCAAATGTCTGATGAAGCATGAGGATGTTTGTACAGC  
GCTATTAATTACAGCCTTCAATTCCTGGCCTGGAAAGATACTCTGTCTGCCAGAGGACAACCTCACAG  
CTCTGCTGGCCTCTCTCAAACAAGTGCTGTGAGGGACACTGCTCGCAGATGCAGTTACGTGGCTTTTCA  
CCAGTGTGCTGAAAGGCTTACAGATGCACGGGCAGCACGAGGCTGCATGGCTTCCCTGGTCCATCTGGC  
CTTCCAGATATACGAGGCACTGCGCCCCAGGTACCTGGAGATAAGAGCTGTAATGGAGCAAATCCCTGAA  
ATACAGAAGGACTCACTGGACCAGTTTACTGCAAGCTTTTAAACCCCTCCCTGCAGAAAGTGGCTGACA  
AGCGCCGAAAGGACCAATTCAAACGCTCATTGCTGGTTGCATTGGGAAACCTTGGGAGAGCAGTTCCG  
AAAAGAAGTTCACATTAAGAATCTTCCCTCACTTTTCAAAAAACAAAGCCAATGCTGGAGACGGAGGTG  
CTGGACAATGATGGGGTGGCCTGGCCACCATCTTTGAACCC

ACGCGTACGCGGCGCTCGAGCAGAACTCATCTCAGAAGAGGATCTGGCAGCAAATGATATCCTGGATT  
ACAAGGATGACGACGATAAGGTTTAA

**Protein Sequence:** >RC209420 representing NM\_020750  
 Red=Cloning site Green=Tags(s)

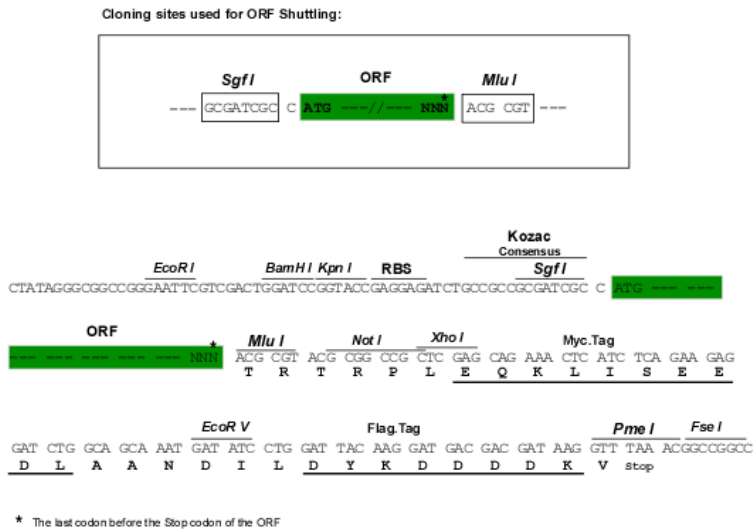
MAMDQVNALCEQLVKAVTVMMDPNSTQRYRLEALKFCEEFKKCPICVPCGLRLAEKTQVAIVRHFGQLI  
 LEHVVKFRWNGMSRLEKYYLKNVSMELIANGTLNILEENHIKDALSRIVVEMIKREWPHWPDMLIELD  
 TLSKQGETQTELVMFILLRLAEDVVTFTQLPPQRRRDIQQTLTQNMERIFSLLNLTQENVNKYQQVKTD  
 TSQESKAQANCRVGAALNLAGYIDWVSMISHITAENCKLLEILCLLLNEQELQLGAAECLLIASVRK GK  
 LEDRKPLMVLFGDVAMHYILSAAQTADGGGLVEKHVFLKRLCQVLCALGNQLCALLGADSDVETPSNFG  
 KYLESFLAFTTHPSQFLRSSTQMTWGALFRHEILSRDPLLLAIIPKYLRASMTNLVKMGFPKTDSPSCE  
 YSRFDFDSDDFNAFFNSRAQQGEVMRLACRLDPKTSFQMAGEWLKYQLSTFLDAGSVNSCSAVGTGEG  
 SLCSVFSFSFVQWEAMTLFLESVITQMFRTL NREEIPVNDGIELLQMLVNFDTKDPLILSCVL TNVSALF  
 PFVTYRPEFLPQVFSKLFSSVTFETVEESKAPRTRAVRNVRRHACSSIIKMRDYPQLVLPNFDMLYNHV  
 KQLLSNELLTQMEKCALMEALVLSNQFKNYERQKVFLEELMAPVASIWLSDMHVRLSDVDAF IAYVG  
 TDQKSCDPGLEDPGLNRARMSFCVYSILGVVVRTCWPTDLEEAKAGGFVVGYSNGNPIFRNPCTEQIL  
 KLLDNLLALIRTHNTLYAPEMLAKMAEPFTKALDMLDAEKSAIILGPQLLELNDSPVFKTVLERMQRFF  
 STLYENCFHILGKAGPSMQQDFYTVEDLATQLLSSAFVNLNIPDYRLRPLRVFVKPLVLCPPHYEA  
 LVSPILGPLFTYLHMRLSQKWQVINQRSLLCGEAEADENPESQEMLEEQLVRMLTREVMDLITVCCVSK  
 KGADHSSAPPADGDEEMATEVTPSAMAELDLGKCLMKHEDVCTALLITAFNSLAWKDTLSCQRTTSQ  
 LCWPLLKQVLSGTLADAVTWLFTSVLKGLQMHGQHDGCMASLVHLAFQIYEALRPRYLEIRAVMEQIPE  
 IQKDSLQDFDCKLLNPSLQKVADKRRKQFKRLIAGCIGKPLGEQFRKEVHIKNLPSLFKKTKPMLETEV  
 LDNDGGGLATIFEP

TRTRPLEQKLISEEDLAANDILDYKDDDDKV

**Chromatograms:** [https://cdn.origene.com/chromatograms/mk8114\\_a06.zip](https://cdn.origene.com/chromatograms/mk8114_a06.zip)

**Restriction Sites:** SgfI-MluI

**Cloning Scheme:**



**ACCN:** NM\_020750

**ORF Size:** 3612 bp

**OTI Disclaimer:** Due to the inherent nature of this plasmid, standard methods to replicate additional amounts of DNA in E. coli are highly likely to result in mutations and/or rearrangements. Therefore, OriGene does not guarantee the capability to replicate this plasmid DNA. Additional amounts of DNA can be purchased from OriGene with batch-specific, full-sequence verification at a reduced cost. Please contact our customer care team at [custsupport@origene.com](mailto:custsupport@origene.com) or by calling 301.340.3188 option 3 for pricing and delivery.

The molecular sequence of this clone aligns with the gene accession number as a point of reference only. However, individual transcript sequences of the same gene can differ through naturally occurring variations (e.g. polymorphisms), each with its own valid existence. This clone is substantially in agreement with the reference, but a complete review of all prevailing variants is recommended prior to use. [More info](#)

**OTI Annotation:** This clone was engineered to express the complete ORF with an expression tag. Expression varies depending on the nature of the gene.

**Components:** The ORF clone is ion-exchange column purified and shipped in a 2D barcoded Matrix tube containing 10ug of transfection-ready, dried plasmid DNA (reconstitute with 100 ul of water).

**Reconstitution Method:**

1. Centrifuge at 5,000xg for 5min.
2. Carefully open the tube and add 100ul of sterile water to dissolve the DNA.
3. Close the tube and incubate for 10 minutes at room temperature.
4. Briefly vortex the tube and then do a quick spin (less than 5000xg) to concentrate the liquid at the bottom.
5. Store the suspended plasmid at -20°C. The DNA is stable for at least one year from date of shipping when stored at -20°C.

**RefSeq:** [NM\\_020750.3](#)

**RefSeq Size:** 5378 bp

**RefSeq ORF:** 3615 bp

**Locus ID:** 57510

**UniProt ID:** [Q9HAV4](#)

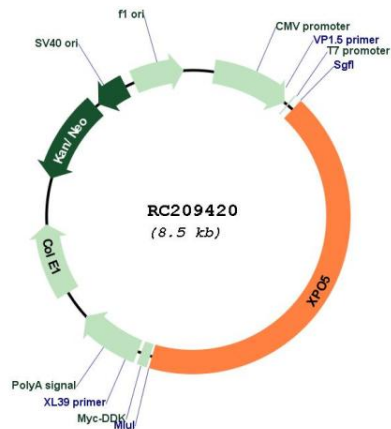
**Cytogenetics:** 6p21.1

**Protein Families:** Druggable Genome

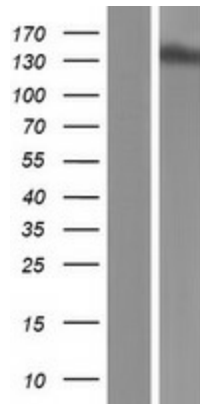
**MW:** 136.3 kDa

**Gene Summary:** This gene encodes a member of the karyopherin family that is required for the transport of small RNAs and double-stranded RNA-binding proteins from the nucleus to the cytoplasm. The encoded protein translocates cargo through the nuclear pore complex in a RanGTP-dependent process. [provided by RefSeq, Aug 2011]

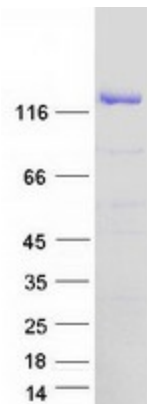
Product images:



Circular map for RC209420



Western blot validation of overexpression lysate (Cat# [LY412374]) using anti-DDK antibody (Cat# [TA50011-100]). Left: Cell lysates from untransfected HEK293T cells; Right: Cell lysates from HEK293T cells transfected with RC209420 using transfection reagent MegaTran 2.0 (Cat# [TT210002]).



Coomassie blue staining of purified XPO5 protein (Cat# [TP309420]). The protein was produced from HEK293T cells transfected with XPO5 cDNA clone (Cat# RC209420) using MegaTran 2.0 (Cat# [TT210002]).