

Product datasheet for **RC209418**

OSBPL11 (NM_022776) Human Tagged ORF Clone

Product data:

Product Type:	Expression Plasmids
Product Name:	OSBPL11 (NM_022776) Human Tagged ORF Clone
Tag:	Myc-DDK
Symbol:	OSBPL11
Synonyms:	ORP-11; ORP11; OSBP12; TCCCIA00292
Mammalian Cell Selection:	Neomycin
Vector:	pCMV6-Entry (PS100001)
E. coli Selection:	Kanamycin (25 ug/mL)



[View online »](#)

ORF Nucleotide Sequence:

>RC209418 representing NM_022776
 Red=Cloning site Blue=ORF Green=Tags(s)

TTTTGTAATACGACTCACTATAGGGCGGCCGGAATTCGTCGACTGGATCCGGTACCGAGGAGATCTGCC
 GCC**CGCATCGCC**

ATGACGGGGGTGAACCAAGTGTCCACAATGAAAGTCTCGGAGAGCGAAGGAAAGCTGGAGGGCCAGGCCA
 CAGCGGTGACCCGAACAAGAACAGCAGCTGTGGAGGTGGAATCAGTAGCAGCAGCAGCAGCCCGGTGG
 CAGTGCAAAAAGGCTGGCAGTACAGTGATCACATGGAAAATGTGTATGGCTATTTAATGAAGTATACCAAC
 CTTGCTACTGGGTGGCAGTACAGTTTTTTGTTTTAAACAATGAAGCTGGGCTGTTGGAGTACTTTGTGA
 ATGAACAGTCTAGAAATCAGAAACCTAGAGGAACTTGCAGCTTGCAGGAGCTGTAATATCACCCAGTGA
 TGAGGATTCTCACACCTCACTGTAACCGCTGCCAGTGGGGAACAATAAACTCAGAGCTACAGATGCA
 AAAGAGCGACAGCACTGGGTTAGCAGACTTCAGATATGTACACAGCATCATACTGAAGCTATTGAAAGA
 ATAATCCTCCTCTGAAGTCACGGAGCTTCTCACTGCATCTAGTAGTAATTCCTATATCGCAGAGGAG
 ACCAAGTCAAAATGCCATTTCTTTTTTAAATGTTGGACATTCAAACTGCAATCACTGAGCAAAAGAACT
 AATTTACCTCCAGACCATCTGTGGAAGTCAGAGAAATGATGTCTCATGCTGAAGGACAACAAAGAGACT
 TAATTAGACGAATTGAATGCCTTCTACTTCTGGCCATCTTAGTTCCTGGACCAGGATCTCTTAATGCT
 CAAAGCTACTTCCATGGCAACTATGAACTGCTTAAATGACTGCTTTCATATTCTCCAGTTACAGCATGCA
 TCACATCAGAAGGGCTCATTGCCTTCAGGAACGACAATCGAGTGGTTAGAACCAAGATATCTTTATCAA
 ACCACTATAAAAATGGAGCTGACCAGCCCTTTCGCAACTGATCAGAGTAAGCCGGTGGCAGTCCCAGAAGA
 GCAGCCTGTTGCAGAATCTGGACTATTAGCGAGGGAGCCTGAAGAAATAAATGCAGATGATGAGATAGAG
 GATACATGTGACCACAAGAGGATGACCTGGGAGCTGTAGAAGAACAACGTAGTGTACCTACATCTCT
 TGTACAGCTTAAGCTGGGCATGGATTTAAACAAGAGTGGTGTCTTCTACATTTATCCTAGAGAAGCGTTC
 CTTGCTGGAAATGTATGCAGACTTTATGTCTCATCCAGACCTATTTATAGCCATCACTAATGGAGCCACA
 GCTGAGGACAGAATGATTCGCTTTGTTGAGTACTACCTTACCTCATTTTCATGAAGGCCGTAAAGGAGCCA
 TTGCTAAAAAACCATACAATCCTATCATTGGAGAAACATTTCACTGTTCTGGAAGATGCCAAAAAGCGA
 GGTAGCATCCAGTGTTTTAGCAGTTCTTCCACCAGGGAGTCACAAATCATGCTCCTTTATCGGGGAG
 TCTTTGACCCAGGTGGGATCAGACTGTTACACAGTCAAGTTTGTGCTGAGCAGGTTTCTCATCCTC
 CAGTCTCAGGATTTTATGCAGAATGTACAGAGAGGAAGATGTGTGTAATGCGCATGTCTGGACTAAGAG
 CAAGTTCTTAGGCATGTCAATAGGCGTGACAATGGTTGGAGAAGGTATCCTTAGTCTGTTGGAGCATGGA
 GAAGAGTACACATTTTCTACCTGTGCATATGCTCGGTCAATTTTACTGTTCTTGGGTAGAAGTGG
 GTGGCAAAGTCAAGTGTCAACTGTGCAAAAAGTGGATATTCAGCCAGCATCACTTTTCATACCAAGCCATT
 TTATGGTGGCAAAGTGCATCGGGTTACAGCTGAAGTAAAGCACAACATACCAACACTGTGGTATGCAGA
 GTGCAAGGGGAATGGAATAGTGTCTTGTAGTTCACATATAGCAATGGAGAGACAAAGTATGTGGACTTGA
 CTAATTTGGCAGTGACGAAGAAAAGAGTGAAGCTCTGGAGAAGCAGGATCCATTTGAATCCAGGCGATT
 GTGAAAAATGTGACAGACTCGCTGAGAGAATCTGAAATTTGATAAGGCCACAGAGCATAAGCATACCCTG
 GAAGAACGTCAGAGGACTGAAGAAAGGCATCGTACTGAAACAGGCACACCTTGGAAAACCAATATTTTA
 TTAAGAGGGAGATGGCTGGGTTTATCATAAACCACTTTGGAAAAATAATCCAACAACACAACCAGCAGA
 G

ACGCGTACGCGGCCGCTCGAGCAGAAACTCATCTCAGAAGAGGATCTGGCAGCAATGATATCCTGGATT
 ACAAGGATGACGACGATAAGGTTTAA

Protein Sequence: >RC209418 representing NM_022776
Red=Cloning site Green=Tags(s)

MQGGPEVSTMKVSESEGLKLEGQATAVTPNKNSSCGGGISSSSSRGGSAGWQYSDHMENVYGYLMKYTN
 LVTGWQYRFFVLNNEAGLLEYFVNEQSRNQKPRGTLQLAGAVISPSDEDSHTFTVNAASGEQYKLRATDA
 KERQHWVSRLQICTQHHTAIGKNNPPLKSRSFSLASSNSPISQRRPSQNAISFFNVGHSKLQSLSKRT
 NLPPDHLVEVREMMSHAEGQQRDLIRRIECLPTSGHLSSLDQDLLMLKATSMATMNCLNDCFHILQLQHA
 SHQKGSLSPTGTTIEWLEPKISLSNHYKNGADQPFATDQSKPVAVPEEQPVAESGLLAREPEEINADDEIE
 DTCDHKEDDLGAVEEQRSVILHLLSQLKLGMDLTRVVLPTFILEKRSLLEMYADFMSPDLFIAITNGAT
 AEDRMIRFVEYYLTSFHEGRKGAIAKKPYNPIIGETFHCSWKMPKSEVASSVFSSSSTQGVTNHAPLSGE
 SLTQVGSDCYTVRFVAEQVSHPPVSGFYAECTERKMCVNAHVWTKSKFLGMSIGVTMVGEGILSLEHG
 EETYFSLPCAYARSILTPWVELGGKSVNCAKTGYSASITFHTKPFYGGKLRHVTAEVKHNIITNTVVC
 VQGEWNSVLEFTYSNGETKYVDLTKLAVTKKRVPRLEKQDPFESRRLWKNVTDLSLRESEIDKATEHKHTL
 EERQRTEERHRTETGTPWKTKYFIKEGDGWVYHKPLWKIIPPTQPAE

TRTRPLEQKLISEEDLAANDILDYKDDDDKV

Chromatograms: https://cdn.origene.com/chromatograms/mg2866_h01.zip

Restriction Sites: SgfI-MluI

Cloning Scheme:

Cloning sites used for ORF Shuttling:



* The last codon before the Stop codon of the ORF

ACCN: NM_022776

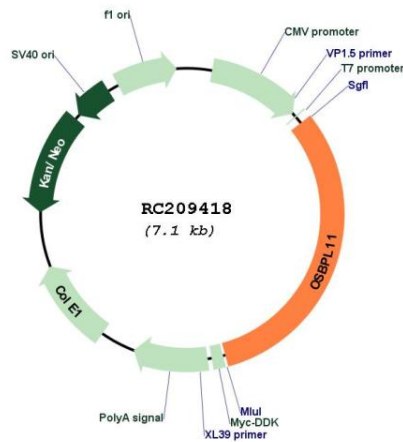
ORF Size: 2241 bp

OTI Disclaimer: The molecular sequence of this clone aligns with the gene accession number as a point of reference only. However, individual transcript sequences of the same gene can differ through naturally occurring variations (e.g. polymorphisms), each with its own valid existence. This clone is substantially in agreement with the reference, but a complete review of all prevailing variants is recommended prior to use. [More info](#)

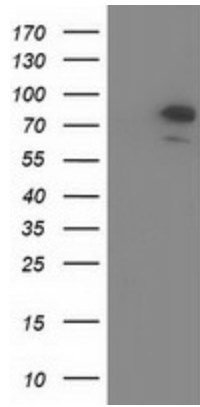
OTI Annotation: This clone was engineered to express the complete ORF with an expression tag. Expression varies depending on the nature of the gene.

Components:	The ORF clone is ion-exchange column purified and shipped in a 2D barcoded Matrix tube containing 10ug of transfection-ready, dried plasmid DNA (reconstitute with 100 ul of water).
Reconstitution Method:	<ol style="list-style-type: none"> 1. Centrifuge at 5,000xg for 5min. 2. Carefully open the tube and add 100ul of sterile water to dissolve the DNA. 3. Close the tube and incubate for 10 minutes at room temperature. 4. Briefly vortex the tube and then do a quick spin (less than 5000xg) to concentrate the liquid at the bottom. 5. Store the suspended plasmid at -20°C. The DNA is stable for at least one year from date of shipping when stored at -20°C.
RefSeq:	<u>NM_022776.5</u>
RefSeq Size:	4206 bp
RefSeq ORF:	2244 bp
Locus ID:	114885
UniProt ID:	<u>Q9BXB4</u>
Cytogenetics:	3q21.2
Domains:	Oxysterol_BP, PH
MW:	83.5 kDa
Gene Summary:	This gene encodes a member of the oxysterol-binding protein (OSBP) family, a group of intracellular lipid receptors. Like most members, the encoded protein contains an N-terminal pleckstrin homology domain and a highly conserved C-terminal OSBP-like sterol-binding domain. [provided by RefSeq, Jul 2008]

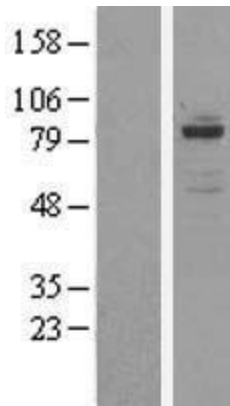
Product images:



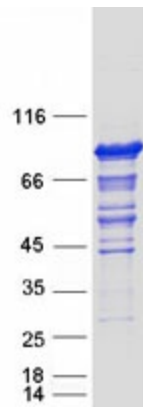
Circular map for RC209418



HEK293T cells were transfected with the pCMV6-ENTRY control (Cat# [PS100001], Left lane) or pCMV6-ENTRY OSBPL11 (Cat# RC209418, Right lane) cDNA for 48 hrs and lysed. Equivalent amounts of cell lysates (5 ug per lane) were separated by SDS-PAGE and immunoblotted with anti-OSBPL11(Cat# [TA502068]). Positive lysates [LY411565] (100ug) and [LC411565] (20ug) can be purchased separately from OriGene.



Western blot validation of overexpression lysate (Cat# [LY411565]) using anti-DDK antibody (Cat# [TA50011-100]). Left: Cell lysates from untransfected HEK293T cells; Right: Cell lysates from HEK293T cells transfected with RC209418 using transfection reagent MegaTran 2.0 (Cat# [TT210002]).



Coomassie blue staining of purified OSBPL11 protein (Cat# [TP309418]). The protein was produced from HEK293T cells transfected with OSBPL11 cDNA clone (Cat# RC209418) using MegaTran 2.0 (Cat# [TT210002]).