

## Product datasheet for **RC209413**

### EXOC3 (NM\_007277) Human Tagged ORF Clone

#### Product data:

Product Type:	Expression Plasmids
Product Name:	EXOC3 (NM_007277) Human Tagged ORF Clone
Tag:	Myc-DDK
Symbol:	EXOC3
Synonyms:	SEC6; SEC6L1; Sec6p
Mammalian Cell Selection:	Neomycin
Vector:	pCMV6-Entry (PS100001)
E. coli Selection:	Kanamycin (25 ug/mL)



[View online »](#)

**ORF Nucleotide Sequence:**

>RC209413 ORF sequence  
 Red=Cloning site Blue=ORF Green=Tags(s)

TTTTGTAATACGACTCACTATAGGGCGGCCGGAATTCGTCGACTGGATCCGGTACCGAGGAGATCTGCC  
 GCC**CGATCGCC**

ATGAAGGAGACAGACCGGGAGGCCGTTGCGACAGCAGTGCAAAGGTTGCTGGGATGCTCCAGCGCCCGG  
 ACCAGCTGGACAAGGTGGAGCAGTATCGCAGGAGAGAAGCGCGGAAGAAGGCCTCCGTGGAGGCCAGATT  
 GAAGGCCGCCATCCAGTACAGTTGGACGGGTGCGCACAGGCCTCAGCCAGCTCCACAACGCCCTGAAT  
 GACGTCAAAGACATCCAGCAGTCGCTGGCAGACGTGAGCAAGGACTGGAGGCAGAGCATCAACACCATTG  
 AGAGCCTCAAGGACGTCAAAGACGCCGTGGTGCAGCACAGCCAGCTCGCCGACGCCGTGGAGAACCCTCAA  
 GAACATCTTCTCAGTGCCTGAGATTGTGAGGGAGACCCAGGACCTAATTGAACAAGGGGCACTCTGCAA  
 GCCCACCGGAAGCTGATGGACCTGGAATGCTCCCGGGACGGGCTGATGTACGAGCAGTACCGCATGGACA  
 GTGGGAACACGCGTGACATGACCCTCATCCATGGCTACTTTGGCAGCACGAGGGGCTCTCTGATGAGCT  
 GGCTAAGCAGCTGTGGATGGTGTGCAGAGGTCAGTGGTCACTGTCCGCCGTGACCCACCTTGCTGGTC  
 TCAGTTGTGAGGATCATTGAAAGGGAAGAGAAAATTGACAGGCGCATACTTGACCGGAAAAAGCAAAGT  
 GCTTTGTTCTCCTGGGAGGCCAAGAATTGAAAGGAGAAAATGTTACCATCTTGAGAGGACTGTGAC  
 CACCAGAAATTGAGGGCACACAGGCAGATACCAGAGAGTCTGACAAGATGTGGCTTGTCCGCCACCTGGAA  
 ATTATAAGGAAGTACGCTCCTGGATGACCTCATTGTGCGCAAAAACCTGATGGTTCAAGTCTTCTCCCC  
 ACTATGAGATCTTTAAGAACCTCCTGAACATGTACCACCAAGCCCTGAGCACGCGGATGCAGGACCTCGC  
 ATCGGAAGACCTGGAAGCCAATGAGATCGTGAGCCTCTGACGTGGGTCTTAAACACCTACACAAGTACT  
 GAGATGATGAGGAACGTGGAGCTGGCCCCGGAAGTGGATGTCGGCACCCCTGGAGCCATTGCTTTCTCCAC  
 ACGTGGTCTCTGAGCTGCTTGACACGTACATGTCACGCTCACTTCAAACATCATCGCCTGGCTGCGGAA  
 AGCGCTGGAGACAGACAAGAAAGACTGGGTCAAAGAGACAGAGCCAGAAGCCGACCGAGGACGGGTACTAC  
 CAGACCACACTCCCTGCCATTGTCTTCCAGATGTTTGAACAGAATCTTCAAGTTGCTGCTCAGATAAGTG  
 AAGATTTGAAAACAAAGTACTAGTTTTATGTCTTCCAGCAGATGAATTCTTCTAAGCAGATATAAAGA  
 TGAAGCGCAGCTGTATAAAGAAGAGCACCTGAGGAATCGGCAGCACCCCTCACTGTACGTTCAAGTACATG  
 ATCGCCATCATCAACACTGCCAGACCTCAAGGAATCCATAGTCAGTTTAAAAAGAAAGTATTTAAAGA  
 ATGAAGTGAAGAGGGTGTGTCTCCGAGCCAGCCAGCATGGACGGATTTTAGACGCCATCGCGAAGGA  
 GGGCTGCAGCGGTTTGTGGAGGAGTCTTCTGGACCTGGAGCAACATCTGAATGAATTGATGACGAAG  
 AAGTGGCTATTAGGGTCAAACGCTGTAGACATTATCTGTGTACCGTGGAAGACTATTTCAACGATTTTG  
 CCAAAATTAAGGCGGTATAAGAAGAGGATGACGGCCGAGGCGCACCGGCGGTGGTGGTGGAGTACCT  
 GCGGGCGGTATGCAGAAGCGCATTTCTTCCGGAGCCCGGAGGAGCGCAAGGAGGGTGCCGAGAAGATG  
 GTTAGGGAGGCAGAGCAGCTGCGCTTCTGTTCCGGAAGCTGGCGTCCGGTTTCCGGGAAGACGTGGACG  
 GATACTGCGACACCATCGTGGCTGTGGCCGAAGTATCAAGCTGACAGACCCCTTCTGTCTACCTGGA  
 GGTCTCCACTCTGGTCAAGTATCCAGACATCAGGGATGACCACATCGGTGCGCTGCTGGCTGTGCGT  
 GGGGACGCCAGCCGTGACATGAAGCAGACCATCATGGAGACCTGGAGCAGGGCCAGCACAGGCCAGCC  
 CCAGCTACGTGCCCTCTTCAAGGACATTGTGGTGCCAGCCTGAACGTGGCCAAGCTGCTCAAG

**AGCGGACCG**ACGCGTACGCGGCCGCTCGAGCAGAACTCATCTCAGAAGAGGATCTGGCAGCAAATGATATCC  
 TGGATTACAAGGATGACGACGATAAGGTTTAA

**Protein Sequence:** >RC209413 protein sequence  
Red=Cloning site Green=Tags(s)

```

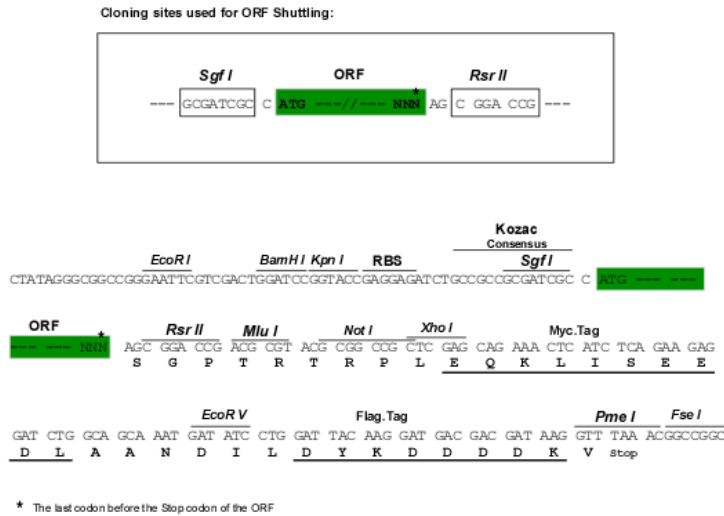
MKETDREAVATAVQRVAGMLQRPDQLDKVEQYRRREARKKASVEARLKAATQSQLDGVRTGLSQLHNALN
DVKDIQQSLADVSKDWRQSINTIESLKDVKDAVVQHSQLAAAVENLKNIFSVPEIVRETQDLIEQGALLQ
AHRKLMDECSRDLMEYQYRMDSGNTRDMTLIHGYPFGSTQGLSDELAKQLWMVLQRSLVTVRRDPTLLV
SVVRIIEREEKIDRRILDRRKQTGFVPPGRPKNWKEKMFTILERTVTTRIEGTQADTRESDKMWLVRHLE
IIRKYVLDLIVAKNLMVQCFPPHYEIFKNLLNMYHQALSTRMQDLASEDLEANEIVSLLTWVLNTYTST
EMMRNVELAPEVDVGTLEPLLSPHVSELLDTYMSTLTSNIIAWLRKALETDKKDWVKETEPEADQDGY
QTTLPAIVFQMFEQNLQVAAQISEDLKTKVLVLCLQQMNSFLSRYKDEAQLYKEEHLRNRQHPHCYVQYM
IAIINNCQTFKESIVSLKRKYLKNEVEEGVSPSQPSMDGILDAIAKEGCSGLLEEVFLDLEQHLNELMTK
KWLLGSNAVDIICVTVEDYFNDFAKIKKPYKKRMTAEAHRRVVVEYLRAVMQKRISFRSPEERKEGAEKM
VREAEQLRFLFRKLASGFGEDVDGYCDTIVAVAEVIKLTDPSLLYLEVSTLVSKYPDIRDDHIGALLAVR
GDASRDMKQTIMETLEQGPAQASPSYVPLFKDIVVPSLNVAKLLK
  
```

SGPTRTRPLEQKLISEEDLAANDILDYKDDDDKV

**Chromatograms:** [https://cdn.origene.com/chromatograms/mk6185\\_b11.zip](https://cdn.origene.com/chromatograms/mk6185_b11.zip)

**Restriction Sites:** SgfI-RsrII

**Cloning Scheme:**



**ACCN:** NM\_007277

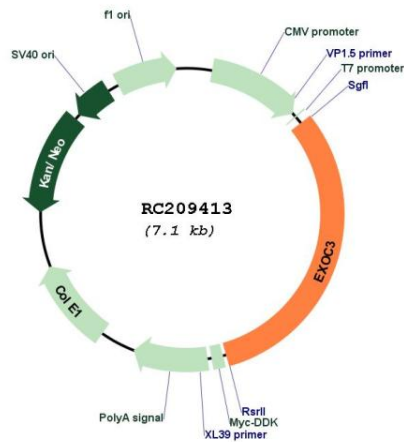
**ORF Size:** 2235 bp

**OTI Disclaimer:** The molecular sequence of this clone aligns with the gene accession number as a point of reference only. However, individual transcript sequences of the same gene can differ through naturally occurring variations (e.g. polymorphisms), each with its own valid existence. This clone is substantially in agreement with the reference, but a complete review of all prevailing variants is recommended prior to use. [More info](#)

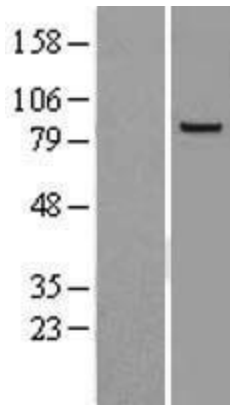
**OTI Annotation:** This clone was engineered to express the complete ORF with an expression tag. Expression varies depending on the nature of the gene.

<b>Components:</b>	The ORF clone is ion-exchange column purified and shipped in a 2D barcoded Matrix tube containing 10ug of transfection-ready, dried plasmid DNA (reconstitute with 100 ul of water).
<b>Reconstitution Method:</b>	<ol style="list-style-type: none"><li>1. Centrifuge at 5,000xg for 5min.</li><li>2. Carefully open the tube and add 100ul of sterile water to dissolve the DNA.</li><li>3. Close the tube and incubate for 10 minutes at room temperature.</li><li>4. Briefly vortex the tube and then do a quick spin (less than 5000xg) to concentrate the liquid at the bottom.</li><li>5. Store the suspended plasmid at -20°C. The DNA is stable for at least one year from date of shipping when stored at -20°C.</li></ol>
<b>RefSeq:</b>	<a href="#">NM_007277.5</a>
<b>RefSeq Size:</b>	2774 bp
<b>RefSeq ORF:</b>	2238 bp
<b>Locus ID:</b>	11336
<b>UniProt ID:</b>	<a href="#">O60645</a>
<b>Cytogenetics:</b>	5p15.33
<b>Protein Pathways:</b>	Tight junction
<b>MW:</b>	85.6 kDa
<b>Gene Summary:</b>	The protein encoded by this gene is a component of the exocyst complex, a multiple protein complex essential for targeting exocytic vesicles to specific docking sites on the plasma membrane. Though best characterized in yeast, the component proteins and functions of exocyst complex have been demonstrated to be highly conserved in higher eukaryotes. At least eight components of the exocyst complex, including this protein, are found to interact with the actin cytoskeletal remodeling and vesicle transport machinery. The complex is also essential for the biogenesis of epithelial cell surface polarity. [provided by RefSeq, Jul 2008]

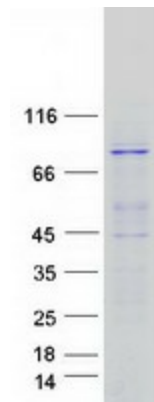
Product images:



Circular map for RC209413



Western blot validation of overexpression lysate (Cat# [LY402127]) using anti-DDK antibody (Cat# [TA50011-100]). Left: Cell lysates from untransfected HEK293T cells; Right: Cell lysates from HEK293T cells transfected with RC209413 using transfection reagent MegaTran 2.0 (Cat# [TT210002]).



Coomassie blue staining of purified EXOC3 protein (Cat# [TP309413]). The protein was produced from HEK293T cells transfected with EXOC3 cDNA clone (Cat# RC209413) using MegaTran 2.0 (Cat# [TT210002]).