

## Product datasheet for RC209395

### RHOJ (NM\_020663) Human Tagged ORF Clone

#### Product data:

Product Type:	Expression Plasmids
Product Name:	RHOJ (NM_020663) Human Tagged ORF Clone
Tag:	Myc-DDK
Symbol:	RHOJ
Synonyms:	ARHJ; RASL7B; TC10B; TCL
Mammalian Cell Selection:	Neomycin
Vector:	pCMV6-Entry (PS100001)
E. coli Selection:	Kanamycin (25 ug/mL)
ORF Nucleotide Sequence:	>RC209395 ORF sequence Red=Cloning site Blue=ORF Green=Tags(s)

TTTTGTAATACGACTCACTATAGGGCGGCCGGAATTCGTCGACTGGATCCGGTACCGAGGAGATCTGCC  
GCC**CGATCGCC**

ATGAAGTGCAAAGAGGGAAGTGCAGCAGCTGCGGCTGCAGGGGCAACGACGAGAAGAAGATGTTGAAGT  
GTGTGGTGGTGGGGACGGTGCCGTGGGAAAACCTGCCTGTGATGAGCTACGCCAACGACGCCTTCCC  
AGAGGAATACGTGCCACTGTGTTGACCACTATGCAGTTACTGTGACTGTGGGAGGCAAGCAACTTG  
CTCGACTGTATGACACCGGGACAGGAGGACTACAACCAGCTGAGGCCACTCTCTACCCCAACACGG  
ATGTGTTTTGATCTGCTTCTGTGCGTAAACCCTGCCTTACCACAATGTCCAGGAGGAATGGGTCCC  
CGAGCTCAAGGACTGCATGCCTCACGTGCCTTATGTCCTCATAGGGACCCAGATTGATCTCCGTGATGAC  
CCAAAAACCTTGCCCGTTTGCTGTATATGAAAGAGAAACCTCTCACTTACGAGCATGGTGTGAAGCTCG  
CAAAGCGATCGGAGCACAGTGCTACTTGGAAATGTTTCAGCTCTGACTCAGAAAGGTCTCAAAGCGTTTT  
TGATGAAGCAATCCTCACCATTTCCACCCCAAGAAAAAGAAACGCTGTTCTGAGGGTCACAGCTGC  
TGTTCAATTATC

**ACGCGT**ACGCGGCCGCTCGAGCAGAACTCATCTCAGAAGAGGATCTGGCAGCAATGATATCCTGGATT  
ACAAGGATGACGACGATAAGGTTTAA



[View online »](#)

**Protein Sequence:** >RC209395 protein sequence  
 Red=Cloning site Green=Tags(s)

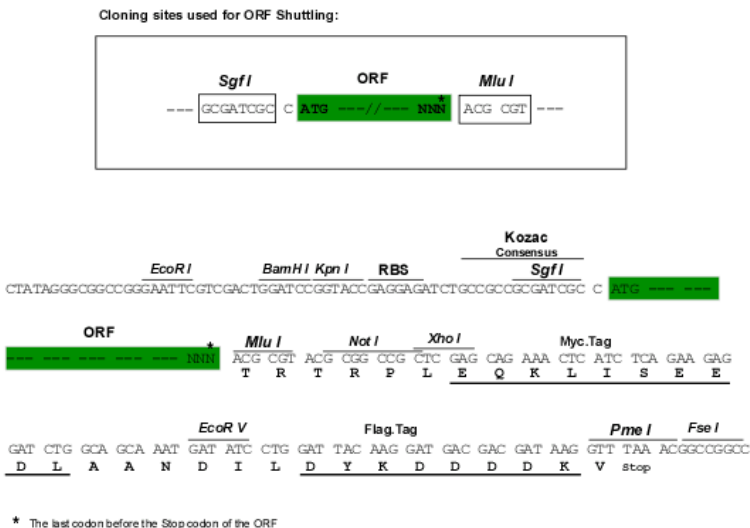
MNCKEGTDSSCGCRGNDEKKMLKCVVVG DGAVGKTCLLSYANDAFPEEYVPTVFDHYAVTVTVGGKQHL  
 LGLYDTAGQEDYNQLRPLSYPN TDVFLICFSVVPASYPHNVQEEWPELKDCMPHVPYVLIGTQIDL RDD  
 PKTLARLLYMKEKPLTYEHGK LAKAIGAQCYLECSAL TQKGLKAVFDEAILTIFHPKKKKKRCSEGHSC  
 CSII

TRTRPLEQKLISEEDLAANDILDYKDDDDKV

**Chromatograms:** [https://cdn.origene.com/chromatograms/mk6354\\_a03.zip](https://cdn.origene.com/chromatograms/mk6354_a03.zip)

**Restriction Sites:** SgfI-MluI

**Cloning Scheme:**



**ACCN:** NM\_020663

**ORF Size:** 642 bp

**OTI Disclaimer:** The molecular sequence of this clone aligns with the gene accession number as a point of reference only. However, individual transcript sequences of the same gene can differ through naturally occurring variations (e.g. polymorphisms), each with its own valid existence. This clone is substantially in agreement with the reference, but a complete review of all prevailing variants is recommended prior to use. [More info](#)

**OTI Annotation:** This clone was engineered to express the complete ORF with an expression tag. Expression varies depending on the nature of the gene.

**Components:** The ORF clone is ion-exchange column purified and shipped in a 2D barcoded Matrix tube containing 10ug of transfection-ready, dried plasmid DNA (reconstitute with 100 ul of water).

**Reconstitution Method:**

1. Centrifuge at 5,000xg for 5min.
2. Carefully open the tube and add 100ul of sterile water to dissolve the DNA.
3. Close the tube and incubate for 10 minutes at room temperature.
4. Briefly vortex the tube and then do a quick spin (less than 5000xg) to concentrate the liquid at the bottom.
5. Store the suspended plasmid at -20°C. The DNA is stable for at least one year from date of shipping when stored at -20°C.

**Note:** Plasmids are not sterile. For experiments where strict sterility is required, filtration with 0.22um filter is required.

**RefSeq:** [NM\\_020663.5](#)

**RefSeq Size:** 3619 bp

**RefSeq ORF:** 645 bp

**Locus ID:** 57381

**UniProt ID:** [Q9H4E5](#)

**Cytogenetics:** 14q23.2

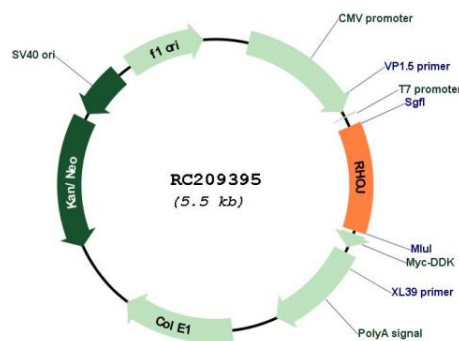
**Domains:** ras, RAS, RHO, RAB

**Protein Families:** Druggable Genome

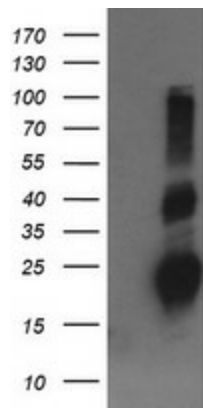
**MW:** 23.8 kDa

**Gene Summary:** This gene encodes one of the many small GTP-binding proteins in the Rho family shown to be associated with focal adhesions in endothelial cells (PMID: 21148427, 22103495). The encoded protein is activated by vascular endothelial growth factor and may regulate angiogenesis. [provided by RefSeq, Dec 2011]

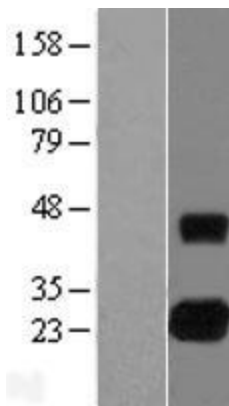
### Product images:



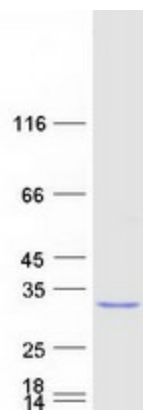
Circular map for RC209395



HEK293T cells were transfected with the pCMV6-ENTRY control (Cat# [PS100001], Left lane) or pCMV6-ENTRY RHOJ (Cat# RC209395, Right lane) cDNA for 48 hrs and lysed. Equivalent amounts of cell lysates (5 ug per lane) were separated by SDS-PAGE and immunoblotted with anti-RHOJ (Cat# [TA505592]). Positive lysates [LY412401] (100ug) and [LC412401] (20ug) can be purchased separately from OriGene.



Western blot validation of overexpression lysate (Cat# [LY412401]) using anti-DDK antibody (Cat# [TA50011-100]). Left: Cell lysates from untransfected HEK293T cells; Right: Cell lysates from HEK293T cells transfected with RC209395 using transfection reagent MegaTran 2.0 (Cat# [TT210002]).



Coomassie blue staining of purified RHOJ protein (Cat# [TP309395]). The protein was produced from HEK293T cells transfected with RHOJ cDNA clone (Cat# RC209395) using MegaTran 2.0 (Cat# [TT210002]).