

## Product datasheet for RC209392

### PRPS1L1 (NM\_175886) Human Tagged ORF Clone

#### Product data:

Product Type:	Expression Plasmids
Product Name:	PRPS1L1 (NM_175886) Human Tagged ORF Clone
Tag:	Myc-DDK
Symbol:	PRPS1L1
Synonyms:	PRPS1; PRPS3; PRPSL; PRS-III
Mammalian Cell Selection:	Neomycin
Vector:	pCMV6-Entry (PS100001)
E. coli Selection:	Kanamycin (25 ug/mL)
ORF Nucleotide Sequence:	>RC209392 ORF sequence Red=Cloning site Blue=ORF Green=Tags(s)

TTTTGTAATACGACTCACTATAGGGCGGCCGGAATTCGTCGACTGGATCCGGTACCGAGGAGATCTGCC  
GCC**CGATCGCC**

ACGCCGAATATCAAAATCTTCAGCGGCAGCTCCCACCAGGACTTATCCCAGAAAATTGCTGACCGCCTGG  
GCCTGGAGCTAGGCAAGGTGGTACTAAGAAATTCAGCAACCAGGAGACCTGCGTGGAAATTGATGAGAG  
TGTGCGTGGAGAGGATGTCTACATCGTTCAGAGTGGTTGTGGCGAAATCAACGACAGTCTAATGGAGCTT  
TTGATCATGATTAATGCCTGCAAGATTGCTTCAGCTAGCCGAGTACTGCAGTCATCCCATGCTTCCCTT  
ATGCCCGACAGGATAAGAAGGATAAGAGCCGGTCCCAATCTCTGCCAAGCTTGTGCAAAATATGCTCTC  
TATAGCAGGTGCGGATCATATCATCACCATGGACCTACATGCTTCTCAAATTCAGGGCTTTTTTGATATC  
CCAGTAGACAACCTGTATGCAGAGCCAACCTGTCCTGAAGTGGATAAGGGAGAATATCCCTGAGTGGAGA  
ACTGCATTATTGTCTCGCCAGATGCTGGTGGAGCTAAAAGAGTGACCTCCATTGCAGACCAGTTGAATGT  
GGACTTTGCTTTGATTCATAAAGAACGGAAGAAGGCCAATGAAGTGGACTGCATAGTGTAGTGGGAGAT  
GTGAATGATCGTGTGGCTATCCTTGTAGATGACATGGCAGACACTTGTGTTACAATCTGCCTCGCAGCTG  
ACAAACTTCTCTCAGCTGGAGCAACCAGAGTTTATGCTATCTTGACTCATGGAATCTTTTCTGGCCCAGC  
CATTTCTCGCATCAACACTGCATGCTTTGAAGCAGTGGTAGTACCAATACCATACTCAAGATGATAAG  
ATGAAGCATTGCTCCAAAATACGAGTAATTGACATCTCCATGATCCTTGCAGAAGCCATAAGGAGAACTC  
ATAATGGGAATCTGTTTCTACCTGTTTCCAGCCATGTTCTTTA

**ACGCGT**ACGCGGCCGCTCGAGCAGAAACTCATCTCAGAAGAGGATCTGGCAGCAAATGATATCCTGGATT  
ACAAGGATGACGACGATAAGGTTTAA



[View online »](#)

**Protein Sequence:** >RC209392 protein sequence  
Red=Cloning site Green=Tags(s)

TPNIKIFSGSSHQDL SQKIADRLGLELGKVVTKKFSNQETCVE IDESVRGEDVYIVQSGCGEINDSLMEL  
 LIMINACKIASASRVTAVIPCFPYARQDKKDKSRSPISAKLVANMLSIAGADHIIITMDLHASQIQGFFDI  
 PVDNLVYAEPTVLKWIRENIPWKNCCIIVSPDAGGAKRVTSIADQLNVDFALIHKERKKANEVDCIVLVGD  
 VNDRVAILVDDMADTCVTICLAADKLLSAGATRVYAILTHGIFSGPAISRINTACFEAVVVTNTIPQDDK  
 MKHCSKIRVIDISMILAEAIRRTHNGESVSYLFSHVPL

TRTRPLEQKLISEEDLAANDILDYKDDDDKV

**Chromatograms:** [https://cdn.origene.com/chromatograms/mk6194\\_a03.zip](https://cdn.origene.com/chromatograms/mk6194_a03.zip)

**Restriction Sites:** SgfI-MluI

**Cloning Scheme:**



**ACCN:** NM\_175886

**ORF Size:** 954 bp

**OTI Disclaimer:** The molecular sequence of this clone aligns with the gene accession number as a point of reference only. However, individual transcript sequences of the same gene can differ through naturally occurring variations (e.g. polymorphisms), each with its own valid existence. This clone is substantially in agreement with the reference, but a complete review of all prevailing variants is recommended prior to use. [More info](#)

**OTI Annotation:** This clone was engineered to express the complete ORF with an expression tag. Expression varies depending on the nature of the gene.

**Components:** The ORF clone is ion-exchange column purified and shipped in a 2D barcoded Matrix tube containing 10ug of transfection-ready, dried plasmid DNA (reconstitute with 100 ul of water).

**Reconstitution Method:**

1. Centrifuge at 5,000xg for 5min.
2. Carefully open the tube and add 100ul of sterile water to dissolve the DNA.
3. Close the tube and incubate for 10 minutes at room temperature.
4. Briefly vortex the tube and then do a quick spin (less than 5000xg) to concentrate the liquid at the bottom.
5. Store the suspended plasmid at -20°C. The DNA is stable for at least one year from date of shipping when stored at -20°C.

**RefSeq:** [NM\\_175886.3](#)

**RefSeq Size:** 1091 bp

**RefSeq ORF:** 957 bp

**Locus ID:** 221823

**UniProt ID:** [P21108](#)

**Cytogenetics:** 7p21.1

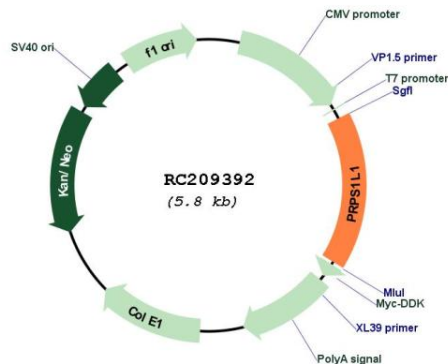
**Protein Families:** Druggable Genome

**Protein Pathways:** Metabolic pathways, Pentose phosphate pathway, Purine metabolism

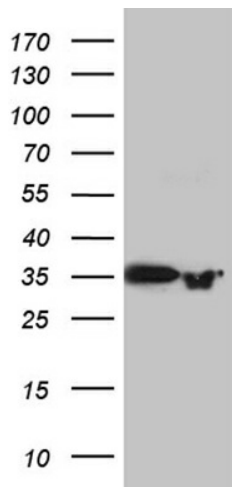
**MW:** 34.8 kDa

**Gene Summary:** This intronless gene is specifically expressed in the testis, and encodes a protein that is highly homologous to the two subunits of phosphoribosylpyrophosphate synthetase encoded by human X-linked genes, PRPS1 and PRPS2. These enzymes convert pyrimidine, purine or pyridine bases to the corresponding ribonucleoside monophosphates. In vitro transcription/translation and site-directed mutagenesis studies indicate that translation of this mRNA initiates exclusively at a non-AUG (ACG) codon. [provided by RefSeq, Jul 2008]

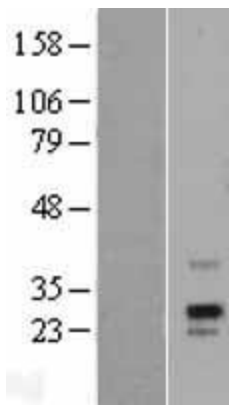
### Product images:



Circular map for RC209392



HEK293T cells were transfected with the pCMV6-ENTRY control (Cat# [PS100001], Left lane) or pCMV6-ENTRY PRPS1L1 (Cat# RC209392, Right lane) cDNA for 48 hrs and lysed. Equivalent amounts of cell lysates (5 ug per lane) were separated by SDS-PAGE and immunoblotted with anti-PRPS1L1 (Cat# [TA811662])(1:2000). Positive lysates [LY403581] (100ug) and [LC403581] (20ug) can be purchased separately from OriGene.



Western blot validation of overexpression lysate (Cat# [LY403581]) using anti-DDK antibody (Cat# [TA50011-100]). Left: Cell lysates from untransfected HEK293T cells; Right: Cell lysates from HEK293T cells transfected with RC209392 using transfection reagent MegaTran 2.0 (Cat# [TT210002]).