

Product datasheet for **RC209391**

KK LC 1 (CT83) (NM_001017978) Human Tagged ORF Clone

Product data:

Product Type: Expression Plasmids
Product Name: KK LC 1 (CT83) (NM_001017978) Human Tagged ORF Clone
Tag: Myc-DDK
Symbol: KK LC 1
Synonyms: CXorf61; KK-LC-1; KKLC1
Mammalian Cell Selection: Neomycin
Vector: pCMV6-Entry (PS100001)
E. coli Selection: Kanamycin (25 ug/mL)
ORF Nucleotide Sequence: >RC209391 ORF sequence
Red=Cloning site Blue=ORF Green=Tags(s)

TTTTGTAATACGACTCACTATAGGGCGGCCGGAATTCGTCGACTGGATCCGGTACCGAGGAGATCTGCC
GCC**CGATCGCC**

ATGAACTTCTATTTACTCCTAGCGAGCAGCATTCTGTGTGCCTTGATTGTCTTCTGGAAATATCGCCGCT
TTCAGAGAAACTGGCGAAATGTCATCAAATCAACTGCTCTTGCACTAGTGAGACCCTTCTTCTG
GTTAATTAACAGCAATACAGACAACAATCTTGCACTACGACCTCTCTCGGGATATTTAAATAATTC
CCACACTCAATAGCCAGGCAGAAGCGAATATTGGTAAACCTCAGTATGGTGGAAAACAAGCTGGTTGAAC
TGAACATACTCTACTTAGCAAGGGTTTCAGAGGTGCATCACCTACCGGAAATCCACC

ACGCGTACGCGGCCGCTCGAGCAGAAACTCATCTCAGAAGAGGATCTGGCAGCAAATGATATCCTGGATT
ACAAGGATGACGACGATAAGGTTTAA

Protein Sequence: >RC209391 protein sequence
Red=Cloning site Green=Tags(s)
MNFYLLLASSILCALIVFWKYRRFQRNTGEMSSNSTALALVRPSSGLINSNTDNNLAVYDLSRDILNNF
PHSIARQKRILVNLSMVENKLVLEHTLLSKGFRGASPHRKST

TRTRPLEQKLISEEDLAANDILDYKDDDDKV

Chromatograms: https://cdn.origene.com/chromatograms/mk6143_e06.zip

Restriction Sites: SgfI-MluI



[View online »](#)

Cloning Scheme:


ACCN: NM_001017978

ORF Size: 339 bp

OTI Disclaimer: The molecular sequence of this clone aligns with the gene accession number as a point of reference only. However, individual transcript sequences of the same gene can differ through naturally occurring variations (e.g. polymorphisms), each with its own valid existence. This clone is substantially in agreement with the reference, but a complete review of all prevailing variants is recommended prior to use. [More info](#)

OTI Annotation: This clone was engineered to express the complete ORF with an expression tag. Expression varies depending on the nature of the gene.

Components: The ORF clone is ion-exchange column purified and shipped in a 2D barcoded Matrix tube containing 10ug of transfection-ready, dried plasmid DNA (reconstitute with 100 ul of water).

- Reconstitution Method:**
1. Centrifuge at 5,000xg for 5min.
 2. Carefully open the tube and add 100ul of sterile water to dissolve the DNA.
 3. Close the tube and incubate for 10 minutes at room temperature.
 4. Briefly vortex the tube and then do a quick spin (less than 5000xg) to concentrate the liquid at the bottom.
 5. Store the suspended plasmid at -20°C. The DNA is stable for at least one year from date of shipping when stored at -20°C.

RefSeq: [NM_001017978.4](#)

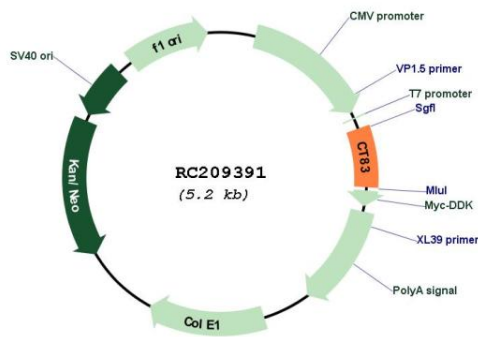
RefSeq Size: 580 bp

RefSeq ORF: 342 bp

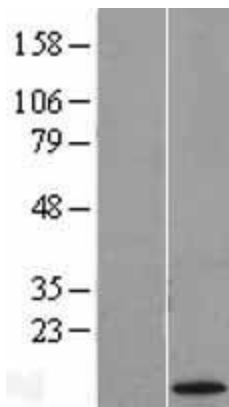
Locus ID: 203413

UniProt ID: [Q5H943](#)
Cytogenetics: Xq23
Protein Families: Transmembrane
MW: 12.8 kDa

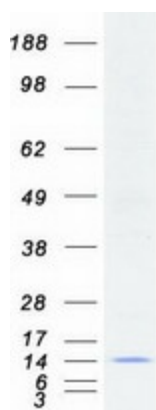
Product images:



Circular map for RC209391



Western blot validation of overexpression lysate (Cat# [LY400409]) using anti-DDK antibody (Cat# [TA50011-100]). Left: Cell lysates from untransfected HEK293T cells; Right: Cell lysates from HEK293T cells transfected with RC209391 using transfection reagent MegaTran 2.0 (Cat# [TT210002]).



Coomassie blue staining of purified CT83 protein (Cat# [TP309391]). The protein was produced from HEK293T cells transfected with CT83 cDNA clone (Cat# RC209391) using MegaTran 2.0 (Cat# [TT210002]).