

Product datasheet for RC209385

SKP1 (NM_170679) Human Tagged ORF Clone

Product data:

Product Type: Expression Plasmids
Product Name: SKP1 (NM_170679) Human Tagged ORF Clone
Tag: Myc-DDK
Symbol: SKP1
Synonyms: EMC19; OCP-II; OCP2; p19A; SKP1A; TCEB1L
Mammalian Cell Selection: Neomycin
Vector: pCMV6-Entry (PS100001)
E. coli Selection: Kanamycin (25 ug/mL)
ORF Nucleotide Sequence: >RC209385 representing NM_170679
 Red=Cloning site Blue=ORF Green=Tags(s)

TTTTGTAATACGACTCACTATAGGGCGGCCGGAATTCGTCGACTGGATCCGGTACCGAGGAGATCTGCC
 GCC**CGGATCGCC**

ATGCCTTCAATTAAGTTGCAGAGTTCTGATGGAGAGATATTTGAAGTTGATGTGGAAATTGCCAAACAAT
 CTGTGACTATTAAGACCATGTTGGAAGATTTGGGAATGGATGATGAAGGAGATGATGACCCAGTTCTCT
 ACCAAATGTGAATGCAGCAATATTAAGAAAGGTCATTCAGTGGTGCACCCACCACAAGGATGACCTCCT
 CCTCCTGAAGATGATGAGAACAAGAAAAGCGAACAGATGATATCCCTGTTTGGGACCAAGAATTCCTGA
 AAGTTGACCAAGGAACACTTTTTGAACTCATTCTGGCTGCAAACTACTTAGACATCAAAGTTTGTGTTGA
 TGTACATGCAAGACTGTTGCCAATATGATCAAGGGGAAAACCTGAGGAGATTCGCAAGACCTTCAAT
 ATCAAAAATGACTTTACTGAAGAGGAGGAAGCCAGGTACGAAAAGAGAACCAGTGGTGTGAAGAGAAG

ACGCGTACGCGGCCGCTCGAGCAGAACTCATCTCAGAAGAGGATCTGGCAGCAAATGATATCCTGGATT
 ACAAGGATGACGACGATAAGGTTTAA

Protein Sequence: >RC209385 representing NM_170679
 Red=Cloning site Green=Tags(s)

MPSIKLQSSDGEIFEVDVEIAKQSVTIKTMLEDLGMDDGDDDPVPLPNVNAAILKKVIQWCTHHKDDPP
 PPEDDENKEKRTDDIPVWDQEFLLKVDQGLFELILAANYLDIKGLLDVTCCKTVANMIKGTPEEIRKTFN
 IKNDFTEEEEAQVRKENQWCEEK

TRTRPLEQK**L**ISEEDLAANDILDYKDDDDKV

Chromatograms: https://cdn.origene.com/chromatograms/mg2894_f01.zip



[View online >](#)

Restriction Sites: SgfI-MluI

Cloning Scheme:



ACCN: NM_170679

ORF Size: 489 bp

OTI Disclaimer: The molecular sequence of this clone aligns with the gene accession number as a point of reference only. However, individual transcript sequences of the same gene can differ through naturally occurring variations (e.g. polymorphisms), each with its own valid existence. This clone is substantially in agreement with the reference, but a complete review of all prevailing variants is recommended prior to use. [More info](#)

OTI Annotation: This clone was engineered to express the complete ORF with an expression tag. Expression varies depending on the nature of the gene.

Components: The ORF clone is ion-exchange column purified and shipped in a 2D barcoded Matrix tube containing 10ug of transfection-ready, dried plasmid DNA (reconstitute with 100 ul of water).

Reconstitution Method:

1. Centrifuge at 5,000xg for 5min.
2. Carefully open the tube and add 100ul of sterile water to dissolve the DNA.
3. Close the tube and incubate for 10 minutes at room temperature.
4. Briefly vortex the tube and then do a quick spin (less than 5000xg) to concentrate the liquid at the bottom.
5. Store the suspended plasmid at -20°C. The DNA is stable for at least one year from date of shipping when stored at -20°C.

RefSeq: [NM_170679.3](#)

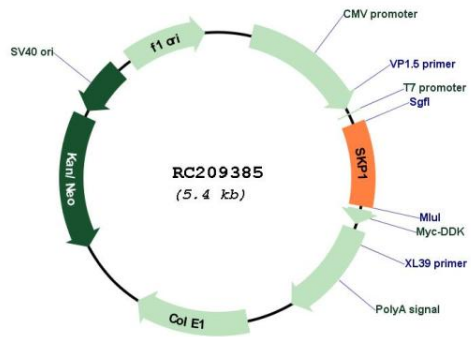
RefSeq Size: 1486 bp

RefSeq ORF: 492 bp

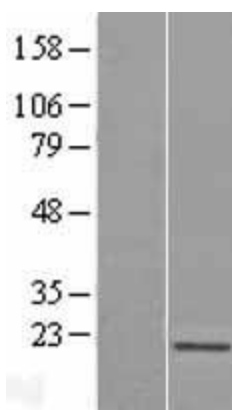
Locus ID: 6500

UniProt ID:	P63208
Cytogenetics:	5q31.1
Protein Families:	Druggable Genome
Protein Pathways:	Cell cycle, Oocyte meiosis, TGF-beta signaling pathway, Ubiquitin mediated proteolysis, Wnt signaling pathway
MW:	18.5 kDa
Gene Summary:	This gene encodes a component of SCF complexes, which are composed of this protein, cullin 1, a ring-box protein, and one member of the F-box family of proteins. This protein binds directly to the F-box motif found in F-box proteins. SCF complexes are involved in the regulated ubiquitination of specific protein substrates, which targets them for degradation by the proteasome. Specific F-box proteins recognize different target protein(s), and many specific SCF substrates have been identified including regulators of cell cycle progression and development. Studies have also characterized the protein as an RNA polymerase II elongation factor. Alternative splicing of this gene results in two transcript variants. A related pseudogene has been identified on chromosome 7. [provided by RefSeq, Jul 2008]

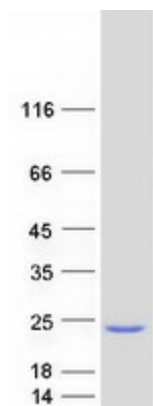
Product images:



Circular map for RC209385



Western blot validation of overexpression lysate (Cat# [LY406907]) using anti-DDK antibody (Cat# [TA50011-100]). Left: Cell lysates from untransfected HEK293T cells; Right: Cell lysates from HEK293T cells transfected with RC209385 using transfection reagent MegaTran 2.0 (Cat# [TT210002]).



Coomassie blue staining of purified SKP1 protein (Cat# [TP309385]). The protein was produced from HEK293T cells transfected with SKP1 cDNA clone (Cat# RC209385) using MegaTran 2.0 (Cat# [TT210002]).