

Product datasheet for RC209381

COMMD5 (NM_014066) Human Tagged ORF Clone

Product data:

Product Type:	Expression Plasmids
Product Name:	COMMD5 (NM_014066) Human Tagged ORF Clone
Tag:	Myc-DDK
Symbol:	COMMD5
Synonyms:	HCARG; HT002
Mammalian Cell Selection:	Neomycin
Vector:	pCMV6-Entry (PS100001)
E. coli Selection:	Kanamycin (25 ug/mL)
ORF Nucleotide Sequence:	>RC209381 ORF sequence Red=Cloning site Blue=ORF Green=Tags(s)

TTTTGTAATACGACTCACTATAGGGCGCCGGGAATTCGTCGACTGGATCCGGTACCGAGGAGATCTGCC
GCC**CGATCGCC**

ATGTCTGCTGTGGGGCTGCAACTCCATACCTGCATCATCCTGGTGATAGTCACAGTGGCCGAGTGAGTT
TCTTGGGGGCCAGCTTCTCCAGAGGTGGCAGCAATGGCCGGCTACTAGGGGACCTAGACAGGAGCAC
GTTCAGAAAGTTGCTGAAGTTTGTGGTCAGCAGCCTGCAGGGGAGGACTGCCGAGAGGCTGTGCAGCGT
CTTGGGGTCAGCGCAACCTGCCGGAGGAGCAGCTGGGTGCCCTGCTGGCAGGCATGCACACACTGCTCC
AGCAGGCCCTCCGTCTGCCCCACCAGCCTGAAGCCTGACACCTTCAGGGACCAGCTCCAGGAGCTCTG
CATCCCCAAGACCTGGTCGGGGACTTGCCAGCGTGGTATTTGGGAGCCAGCGGCCCTCTTGATTCT
GTGGCCAGCAGCAGGGGCCTGGCTGCCGCATGTTGCTGACTTTCGGTGGCGGGTGGATGTAGCAATCT
CCACCAGTGCCCTGGCTCGCTCCCTGCAGCCGAGCGTCTGATGCAGCTGAAGCTTTCAGATGGGTGAGC
ATACCGCTTTGAGGTCCCACAGCCAAGTTCCAGGAGCTGCGGTACAGCGTGGCCCTGGTCTAAAGGAG
ATGGCAGATCTGGAGAAGAGGTGTGAGCGCAGACTGCAGGAC

ACGCGTACGCGGGCCGCTCGAGCAGAACTCATCTCAGAAGAGGATCTGGCAGCAAATGATATCCTGGATT
ACAAGGATGACGACGATAAGGTTTAA



[View online »](#)

Protein Sequence: >RC209381 protein sequence
Red=Cloning site Green=Tags(s)

MSAVGAATPYLHHPGDSHSGRVSFLGAQLPPEVAAMARLLGDLDRSTFRKLLKFVSSSLQGEDCREAVQR
 LGVSANLPEEQLGALLAGMHTLLQQALRLPPTSLKPDTRDQLQELCIPQDLVGDLASVVFSGSRPLDLS
 VAQQQGAWLPHVADFRWRVDVAISTSALARSLQPSVLMQLKLSGDSAYRFEVPTAKFQELRYSVALVLKE
 MADLEKRCERRLQD

TRTRPLEQKLISEEDLAANDILDYKDDDDKV

Chromatograms: https://cdn.origene.com/chromatograms/mk6390_a01.zip

Restriction Sites: SgfI-MluI

Cloning Scheme:



ACCN: NM_014066

ORF Size: 672 bp

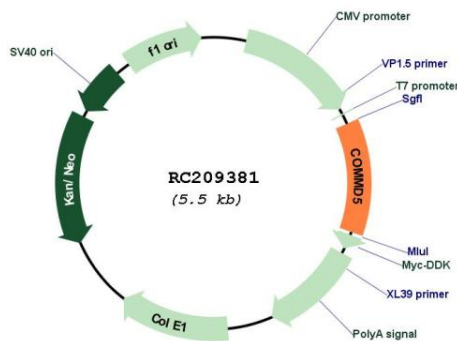
OTI Disclaimer: Due to the inherent nature of this plasmid, standard methods to replicate additional amounts of DNA in *E. coli* are highly likely to result in mutations and/or rearrangements. Therefore, OriGene does not guarantee the capability to replicate this plasmid DNA. Additional amounts of DNA can be purchased from OriGene with batch-specific, full-sequence verification at a reduced cost. Please contact our customer care team at custsupport@origene.com or by calling 301.340.3188 option 3 for pricing and delivery.

The molecular sequence of this clone aligns with the gene accession number as a point of reference only. However, individual transcript sequences of the same gene can differ through naturally occurring variations (e.g. polymorphisms), each with its own valid existence. This clone is substantially in agreement with the reference, but a complete review of all prevailing variants is recommended prior to use. [More info](#)

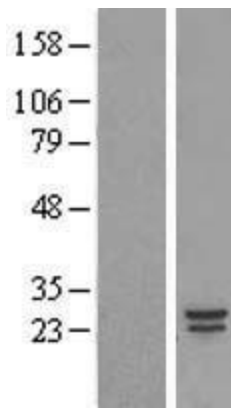
OTI Annotation: This clone was engineered to express the complete ORF with an expression tag. Expression varies depending on the nature of the gene.

Components:	The ORF clone is ion-exchange column purified and shipped in a 2D barcoded Matrix tube containing 10ug of transfection-ready, dried plasmid DNA (reconstitute with 100 ul of water).
Reconstitution Method:	<ol style="list-style-type: none"> 1. Centrifuge at 5,000xg for 5min. 2. Carefully open the tube and add 100ul of sterile water to dissolve the DNA. 3. Close the tube and incubate for 10 minutes at room temperature. 4. Briefly vortex the tube and then do a quick spin (less than 5000xg) to concentrate the liquid at the bottom. 5. Store the suspended plasmid at -20°C. The DNA is stable for at least one year from date of shipping when stored at -20°C.
RefSeq:	<u>NM_014066.4</u>
RefSeq Size:	1475 bp
RefSeq ORF:	675 bp
Locus ID:	28991
UniProt ID:	<u>Q9GZQ3</u>
Cytogenetics:	8q24.3
Protein Families:	Druggable Genome
MW:	24.7 kDa
Gene Summary:	May modulate activity of cullin-RING E3 ubiquitin ligase (CRL) complexes (PubMed:21778237). Negatively regulates cell proliferation. Negatively regulates cell cycle G2/M phase transition probably by transactivating p21/CDKN1A through the p53/TP53-independent signaling pathway. Involved in kidney proximal tubule morphogenesis (By similarity). Down-regulates activation of NF-kappa-B (PubMed:15799966).[UniProtKB/Swiss-Prot Function]

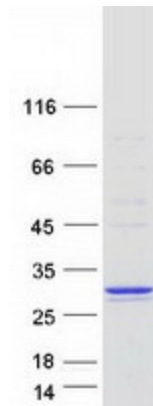
Product images:



Circular map for RC209381



Western blot validation of overexpression lysate (Cat# [LY421149]) using anti-DDK antibody (Cat# [TA50011-100]). Left: Cell lysates from untransfected HEK293T cells; Right: Cell lysates from HEK293T cells transfected with [RC216768] using transfection reagent MegaTran 2.0 (Cat# [TT210002]).



Coomassie blue staining of purified COMMD5 protein (Cat# [TP309381]). The protein was produced from HEK293T cells transfected with COMMD5 cDNA clone (Cat# RC209381) using MegaTran 2.0 (Cat# [TT210002]).