

Product datasheet for RC209372

C6orf58 (NM_001010905) Human Tagged ORF Clone

Product data:

| | |
|---------------------------|-------------------------------------------------------------------|
| Product Type: | Expression Plasmids |
| Product Name: | C6orf58 (NM_001010905) Human Tagged ORF Clone |
| Tag: | Myc-DDK |
| Symbol: | C6orf58 |
| Synonyms: | LEG1 |
| Mammalian Cell Selection: | Neomycin |
| Vector: | pCMV6-Entry (PS100001) |
| E. coli Selection: | Kanamycin (25 ug/mL) |
| ORF Nucleotide Sequence: | >RC209372 ORF sequence Red=Cloning site Blue=ORF Green=Tags(s) |

TTTTGTAATACGACTCACTATAGGGCGGCCGGAATTCGTCGACTGGATCCGGTACCGAGGAGATCTGCC
GCC**CGATCGCC**

ATGGCTTTTCTTCCTCCTGGGTTTGTGTACTAGTTGGTTCCTTTCTGCTTCCTTAGCAGGGACTTCCA
ATCTCTCAGAGACAGAGCCCCCTGTGGAAGGAGAGTCTGGTCAGCTCAGTACTACAGGGTGGAGAA
CAGCATGTACATTATTAATCCCTGGGTATACCTTGAGAGAATGGGGATGTATAAAATCATATTGAATCAG
ACAGCCAGGTATTTGCAAATTTGCACCAGATAATGAACAGAATATTTATGGGGTTCCTCTGCAGT
ATGGCTGGCAATATAGGACAGGCAGATTAGCTGATCCAACCCGAAGGACAACTGTGGCTATGAATCTGG
AGATCATATGTGCATCTCTGTGGACAGTTGGTGGGCTGATTTGAATTATTTCTGTCTTCATTACCTTT
CTTGCTGCGGTTGATTCTGGTGAATGGGATATCATCAGACCAAGTCAGGCTTTTGCCCCACCCAAGA
ATGAGAGGAAGTTTTGTTATGATGTTTCTAGCTGTCTTCATCCTCCCTGAGACAATGAACAAGTGGAA
CACCTTTTACCAGTATTTGCAGTCACCTTTTAGTAAGTTTGTATGATCTGTTGAAGTACTTATGGGCTGCA
CACACTTCAACCTTGGCAGATAATCAAAAGTTTTGAAGACAGATATGATTATTATTCTAAAGCAGAAG
CGCATTTTGAGAGAAGTTGGGTACTGGCTGTGGATCATTTAGCTGCAGTCCTCTTTCTACAACCTTGAT
TAGATCATATAAGTTCCAGAAGGGCATGCCACCACGAATCTTCTTAATACTGATGTAGCCCTTTTCATC
AGTGACTTTACTGCTTTTTCAGAATGTAGTCCTGGTCTTCTAAATATGCTTGACAATGTGGATAAATCTA
TAGGTTATCTTTGTACAGAAAAATCTAATGTATATAGAGATCATTCCGAATCTAGCTCTAGAAGTTATGG
AAATAACTCC

ACGCGTACGCGGCCGCTCGAGCAGAACTCATCTCAGAAGAGGATCTGGCAGCAATGATATCCTGGATT
ACAAGGATGACGACGATAAGGTTTAA



[View online »](#)

Reconstitution Method:

1. Centrifuge at 5,000xg for 5min.
2. Carefully open the tube and add 100ul of sterile water to dissolve the DNA.
3. Close the tube and incubate for 10 minutes at room temperature.
4. Briefly vortex the tube and then do a quick spin (less than 5000xg) to concentrate the liquid at the bottom.
5. Store the suspended plasmid at -20°C. The DNA is stable for at least one year from date of shipping when stored at -20°C.

RefSeq: [NM_001010905.3](#)

RefSeq Size: 1201 bp

RefSeq ORF: 993 bp

Locus ID: 352999

UniProt ID: [Q6P5S2](#)

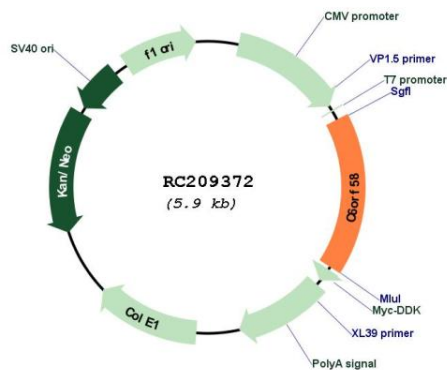
Cytogenetics: 6q22.33

Protein Families: Secreted Protein

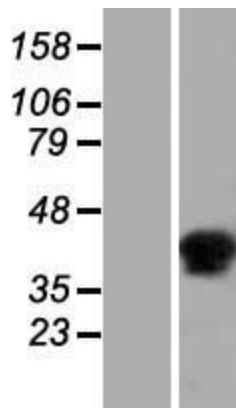
MW: 37.9 kDa

Gene Summary: May be involved in early liver development.[UniProtKB/Swiss-Prot Function]

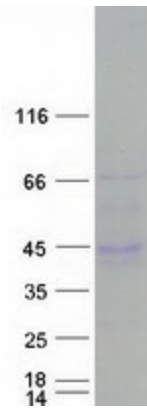
Product images:



Circular map for RC209372



Western blot validation of overexpression lysate (Cat# [LY423220]) using anti-DDK antibody (Cat# [TA50011-100]). Left: Cell lysates from untransfected HEK293T cells; Right: Cell lysates from HEK293T cells transfected with RC209372 using transfection reagent MegaTran 2.0 (Cat# [TT210002]).



Coomassie blue staining of purified C6orf58 protein (Cat# [TP309372]). The protein was produced from HEK293T cells transfected with C6orf58 cDNA clone (Cat# RC209372) using MegaTran 2.0 (Cat# [TT210002]).