

## Product datasheet for RC209371

### AADACL2 (NM\_207365) Human Tagged ORF Clone

#### Product data:

Product Type:	Expression Plasmids
Product Name:	AADACL2 (NM_207365) Human Tagged ORF Clone
Tag:	Myc-DDK
Symbol:	AADACL2
Mammalian Cell Selection:	Neomycin
Vector:	pCMV6-Entry (PS100001)
E. coli Selection:	Kanamycin (25 ug/mL)
ORF Nucleotide Sequence:	>RC209371 ORF sequence Red=Cloning site Blue=ORF Green=Tags(s)

TTTTGTAATACGACTCACTATAGGGCGGCCGGAATTCGTCGACTGGATCCGGTACCGAGGAGATCTGCC  
GCC**CGATCGCC**

ATGCCAGACAACATTGAAGAAAGCTGGAAAATAATGGCCTTGGATGCCATCGCTAAAACCTGTACATTTA  
CGGCTATGTGTTTTGAAAATATGCGTATTATGAGATATGAAGAGTTTATATCCATGATATTCAGGCTGGA  
TTATACCCAACCACTTTCAGATGAATACATCACAGTGACTGATACAACATTTGTTGACATTCAGTACGA  
TTGTACTTGCCAAAAAGAAAGTCAGAAACCCGAAGGCGAGCTGTGATATATTTTCATGGTGGTGGTTTTT  
GTTTTGGAAGTTCCAAACAGAGGGCTTTTGACTTCCTGAATAGATGGACGGCAAACACGCTTGATGCTGT  
TGTTGTAGGCGTGGACTATAGGCTGGCTCCTCAACACCACTTTCCCTGCTCAGTTTGAAGATGGCCTTGCT  
GCAGTCAAATTTTTCTTTTGGAAAAATTCCTACAAAATATGGAGTGGATCCCACCCGAATCTGCATTT  
CGGGAGACAGTTCTGGGGCAATTTAGCAACAGCGGCTCAACAGGTGCAGAATGATGCTGAAAATAAA  
ACATAAAATCAAGATGCAGGTCTTACTTTACCCTGGCTTACAGATAACAGATTCTTATTTGCCATCTCAC  
CGAGAAAATGAGCATGGTATAGTTTTGACCAGGGATGTAGCCATAAAAACCTCGTGAGCTTATATTTACCA  
AGGATGAAGCACTTCCCTGGGCAATGAGAAGAAACCAACACATGCCTCTGGAGTCAAGACATCTGTTAA  
GTTTGTTAACTGGAGTATTCTTCTCCTGAGAAGTATAGAAAAGACTATGTATATACTGAACCAATCTT  
GGAGGACTTAGTTATTCATTGCCAGGACTTACAGACAGCAGAGCATTACCCTTGTGGCCAATGATTCTC  
AGTTACAGAATTTGCCACTAACCTATATTTCTTACTTGTCAACATGATCTCTTAAGAGATGATGGACTTAT  
GTATGTTACAAGACTTCGAAATGTTGGAGTCCAAGTTGTTTCATGAACATATTGAGGATGGAATTCATGGA  
GCTTTATCATTGACTTCACCATTTTATTTACGTCTAGGTCTTAGGATAAGAGATATGTATGTAAGTT  
GGCTGGATAAGAATTTA

**ACGCGT**ACGCGGCCGCTCGAGCAGAAACTCATCTCAGAAGAGGATCTGGCAGCAAATGATATCCTGGATT  
ACAAGGATGACGACGATAAGGTTTAA



[View online »](#)

**Protein Sequence:** >RC209371 protein sequence  
Red=Cloning site Green=Tags(s)

MPDNIEESWKIMALDAIAKTCTFTAMCFENMRIMRYEEFISMIFRLDYTQPLSDEYITVTDTTFFVDIPVR  
 LYLPKRKSETRRRRAVIYFHGGGFCFGSSKQRAFDFLNRTANTLDAVVVGVDYRLAPQHHFPAQFEDGLA  
 AVKFFLLEKILTKYGVDPTRICISGDSSGGNLATAVTQQVQNDAEIKHKIKMQVLLYPGLQITDSYLP  
 RENEHGIVLTRDVAIKLVSLYFTKDEALPWAMRRNQHMPLSRHLFKFVNWSILLPEKYRKDYVYTEPIL  
 GGLSYSPLPGLTDSRALPLLANDSQLQNLPLTYILTCQHDLLRDDGLMYVTRLRNVGVQVVHEHIEDGIIHG  
 ALSFMTSPFYLRGLRIRDMYVSWLTKNL

TRTRPLEQKLISEEDLAANDILDYKDDDDKV

**Chromatograms:** [https://cdn.origene.com/chromatograms/mk6548\\_e02.zip](https://cdn.origene.com/chromatograms/mk6548_e02.zip)

**Restriction Sites:** Sgfl-MluI

**Cloning Scheme:**

Cloning sites used for ORF Shuttling:



\* The last codon before the Stop codon of the ORF

**ACCN:** NM\_207365

**ORF Size:** 1137 bp

**OTI Disclaimer:** The molecular sequence of this clone aligns with the gene accession number as a point of reference only. However, individual transcript sequences of the same gene can differ through naturally occurring variations (e.g. polymorphisms), each with its own valid existence. This clone is substantially in agreement with the reference, but a complete review of all prevailing variants is recommended prior to use. [More info](#)

**OTI Annotation:** This clone was engineered to express the complete ORF with an expression tag. Expression varies depending on the nature of the gene.

**Components:** The ORF clone is ion-exchange column purified and shipped in a 2D barcoded Matrix tube containing 10ug of transfection-ready, dried plasmid DNA (reconstitute with 100 ul of water).

- Reconstitution Method:**
1. Centrifuge at 5,000xg for 5min.
  2. Carefully open the tube and add 100ul of sterile water to dissolve the DNA.
  3. Close the tube and incubate for 10 minutes at room temperature.
  4. Briefly vortex the tube and then do a quick spin (less than 5000xg) to concentrate the liquid at the bottom.
  5. Store the suspended plasmid at -20°C. The DNA is stable for at least one year from date of shipping when stored at -20°C.

**RefSeq:** [NM\\_207365.2](#)

**RefSeq Size:** 1513 bp

**RefSeq ORF:** 1206 bp

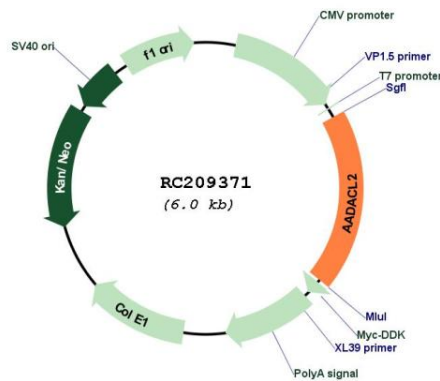
**Locus ID:** 344752

**UniProt ID:** [Q6P093](#)

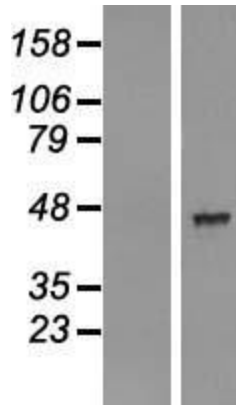
**Cytogenetics:** 3q25.1

**MW:** 43.7 kDa

**Product images:**



Circular map for RC209371



Western blot validation of overexpression lysate (Cat# [LY403986]) using anti-DDK antibody (Cat# [TA50011-100]). Left: Cell lysates from untransfected HEK293T cells; Right: Cell lysates from HEK293T cells transfected with RC209371 using transfection reagent MegaTran 2.0 (Cat# [TT210002]).



Coomassie blue staining of purified AADACL2 protein (Cat# [TP309371]). The protein was produced from HEK293T cells transfected with AADACL2 cDNA clone (Cat# RC209371) using MegaTran 2.0 (Cat# [TT210002]).