

## Product datasheet for RC209369

### TIMM23 (NM\_006327) Human Tagged ORF Clone

#### Product data:

**Product Type:** Expression Plasmids  
**Product Name:** TIMM23 (NM\_006327) Human Tagged ORF Clone  
**Tag:** Myc-DDK  
**Symbol:** TIMM23  
**Synonyms:** TIM23  
**Mammalian Cell Selection:** Neomycin  
**Vector:** pCMV6-Entry (PS100001)  
**E. coli Selection:** Kanamycin (25 ug/mL)  
**ORF Nucleotide Sequence:** >RC209369 ORF sequence  
 Red=Cloning site Blue=ORF Green=Tags(s)

TTTTGTAATACGACTCACTATAGGGCGGCCGGAATTCGTCGACTGGATCCGGTACCGAGGAGATCTGCC  
 GCCCGCATCGCC

ATGGAAGGAGGCGGGGAAGCGGCAACAAAACCACAGGGGGATTGGCCGGCTTTTTCGGAGCCGGCGGAG  
 CAGGTTACTCGCACGCGGATTTGGCTGGCGTCCCCTAACTGGTATGAACCCTCTGTCTCCTATTTAA  
 TGTGGATCCAGTACCTCGTGCAGGATACAGATGAGTTATACCTACCGAGCTATAAAACCCGGGGC  
 AGATTTGAGCTGGCCTTCTTTACGATTGGAGGATGTTGCATGACAGGGGCTGCGTTTGGTCAATGAATG  
 GTCTTCGGCTAGGATTGAAGGAAACCCAGAACATGGCCTGGTCCAAACCAAGAAATGTACAGATTTGAA  
 TATGGTACTAGGCAAGGGGCACTTTGGGCTAATACTCTAGGTTCTCTGGCTTTGCTCTATAGTGCAAT  
 GGTGTCATCATTGAGAAAACACGAGGTGCAGAAGATGACCTTAACACAGTAGCAGCTGGAACCATGACAG  
 GCATGTTGTATAAATGTACAGGTGGTCTTCGAGGGATAGCACGAGGTGGTCTGACAGGACTAACACTTAC  
 CAGCCTCTATGCACTATAATAACTGGGAGCACATGAAAGGCTCCTTGCTCCAACAGTCACTC

ACGCGTACGCGGCCGCTCGAGCAGAACTCATCTCAGAAGAGGATCTGGCAGCAATGATATCCTGGATT  
 ACAAGGATGACGACGATAAGGTTTAA

**Protein Sequence:** >RC209369 protein sequence  
 Red=Cloning site Green=Tags(s)

MEGGGSGNKTTGGLAGFFGAGGAGYSHADLAGVPLTGMNPLSPYLNVDPRYLVDQDDEFIPTGANKTRG  
 RFELAFFTIGCCMTGAAFAMNGLRLGLKETQNMASKPRNVQILNMVTRQALWANTLGSLLLYSAF  
 GVIEKTRGAEDDLNTVAAGTMTGMLYKCTGGLRGIARGGLTGLTLTSLYALYNNWEHMKGSLQQL

TRTRPLEQKLISEEDLAANDILDYKDDDDKV



[View online »](#)

**Chromatograms:** [https://cdn.origene.com/chromatograms/mk6035\\_b11.zip](https://cdn.origene.com/chromatograms/mk6035_b11.zip)

**Restriction Sites:** SgfI-MluI

**Cloning Scheme:**



**ACCN:** NM\_006327

**ORF Size:** 1449 bp

**OTI Disclaimer:** The molecular sequence of this clone aligns with the gene accession number as a point of reference only. However, individual transcript sequences of the same gene can differ through naturally occurring variations (e.g. polymorphisms), each with its own valid existence. This clone is substantially in agreement with the reference, but a complete review of all prevailing variants is recommended prior to use. [More info](#)

**OTI Annotation:** This clone was engineered to express the complete ORF with an expression tag. Expression varies depending on the nature of the gene.

**Components:** The ORF clone is ion-exchange column purified and shipped in a 2D barcoded Matrix tube containing 10ug of transfection-ready, dried plasmid DNA (reconstitute with 100 ul of water).

**Reconstitution Method:**

1. Centrifuge at 5,000xg for 5min.
2. Carefully open the tube and add 100ul of sterile water to dissolve the DNA.
3. Close the tube and incubate for 10 minutes at room temperature.
4. Briefly vortex the tube and then do a quick spin (less than 5000xg) to concentrate the liquid at the bottom.
5. Store the suspended plasmid at -20°C. The DNA is stable for at least one year from date of shipping when stored at -20°C.

**RefSeq:** [NM\\_006327.4](#)

**RefSeq Size:** 1239 bp

**RefSeq ORF:** 630 bp

**Locus ID:** 100287932

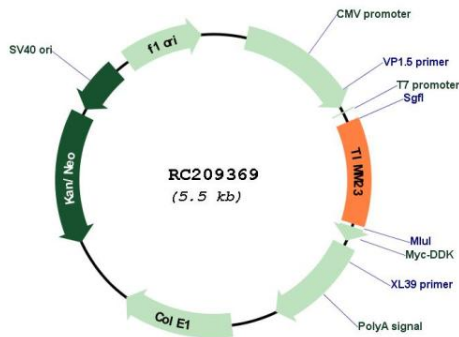
UniProt ID: [O14925](#)

Cytogenetics: 10q11.22

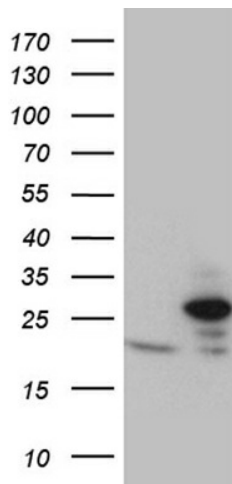
MW: 21.8 kDa

**Gene Summary:** The protein encoded by this gene is part of a complex located in the inner mitochondrial membrane that mediates the transport of transit peptide-containing proteins across the membrane. Multiple transcript variants, one protein-coding and others not protein-coding, have been found for this gene. [provided by RefSeq, Jul 2012]

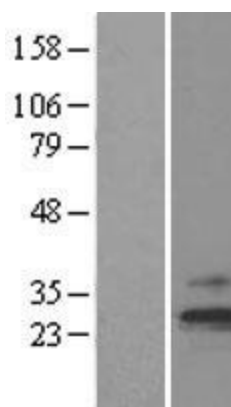
**Product images:**



Circular map for RC209369



HEK293T cells were transfected with the pCMV6-ENTRY control (Cat# [PS100001], Left lane) or pCMV6-ENTRY TIMM23 (Cat# RC209369, Right lane) cDNA for 48 hrs and lysed. Equivalent amounts of cell lysates (5 ug per lane) were separated by SDS-PAGE and immunoblotted with anti-TIMM23 (Cat# [TA811032])(1:2000). Positive lysates [LY401917] (100ug) and [LC401917] (20ug) can be purchased separately from OriGene.



Western blot validation of overexpression lysate (Cat# [LY401917]) using anti-DDK antibody (Cat# [TA50011-100]). Left: Cell lysates from untransfected HEK293T cells; Right: Cell lysates from HEK293T cells transfected with RC209369 using transfection reagent MegaTran 2.0 (Cat# [TT210002]).