

Product datasheet for **RC209368**

ARL8B (NM_018184) Human Tagged ORF Clone

Product data:

Product Type: Expression Plasmids
Product Name: ARL8B (NM_018184) Human Tagged ORF Clone
Tag: Myc-DDK
Symbol: ARL8B
Synonyms: ARL10C; Gie1
Mammalian Cell Selection: Neomycin
Vector: pCMV6-Entry (PS100001)
E. coli Selection: Kanamycin (25 ug/mL)
ORF Nucleotide Sequence: >RC209368 ORF sequence
Red=Cloning site Blue=ORF Green=Tags(s)

TTTTGTAATACGACTCACTATAGGGCGGCCGGAATTCGTCGACTGGATCCGGTACCGAGGAGATCTGCC
GCC**CGATCGCC**

ATGCTGGCGTCACTCTCCCGCTGCTGGACTGGTTCGGTTCGCTCTTCTGGAAGGAAGAGATGGAGCTGA
CGCTCGTGGGGCTGCAGTACTCGGGCAAGACCACCTTCGTCATGTCATCGCGTCAGGTCAATTCAGTGA
AGATATGATACCCACAGTGGGCTTCAACATGAGGAAGGTAACAAAGGTAACGTCACAATAAAGATCTGG
GACATAGGAGGACAACCCGATTCGAAGCATGTGGGAGCGGTATTGCAGAGGAGTCAATGCTATTGTTT
ACATGATAGATGCTGCAGATCGTAAAAGATAGAAGTTCCCGAAATGAGCTACATAATCTCTAGATAA
ACCACAGTTACAAGGAATCCAGTGTAGTGTGGAAACAAGAGAGATCTTCTAATGCCTGGATGAG
AAACAGCTAATTGAAAAAATGAATCTGTCTGCTATTTCAGGATAGAGAAATTTGCTGCTATTCAATTTCTT
GCAAAAGAAAAGGATAATATAGATATCACACTTCAGTGGCTTATTCAGCATTCAAATCTAGAAGAAGC

ACGCGTACGCGGCCGCTCGAGCAGAACTCATCTCAGAAGAGGATCTGGCAGCAAATGATATCCTGGATT
ACAAGGATGACGACGATAAGGTTTAA

Protein Sequence: >RC209368 protein sequence
Red=Cloning site Green=Tags(s)

MLALISRLLDWFRSLFWKEEMELTLVGLQYSGKTFVNVIASGQFSEDMIPTVGFNMRKVTGNVTIKIW
DIGGQPRFRSMWERYCRGVNAIVYMIDAADREKIEASRNELHNLDPQLQGIPVLVLGNKRDLPNALDE
KQLIEKMNLSAIQDREICCYSISCKEKNIDITLQWLIQHSKSRRS

TRTRPLEQKLISEEDLAANDILDYKDDDDKV

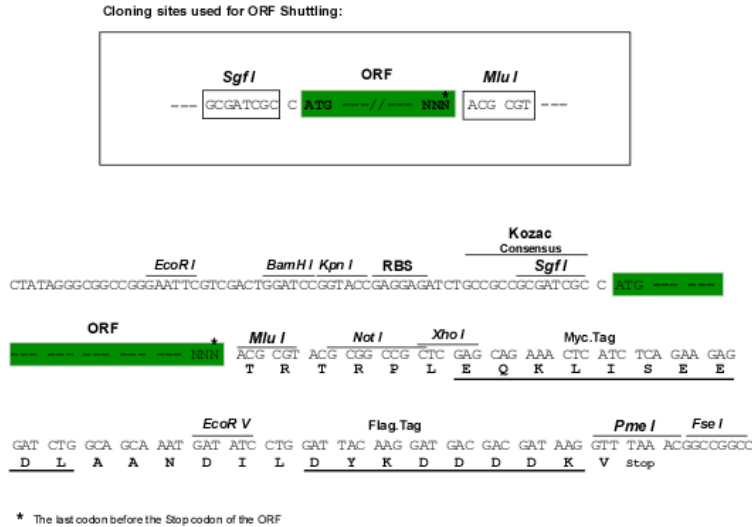
Chromatograms: https://cdn.origene.com/chromatograms/mk6035_a08.zip



[View online »](#)

Restriction Sites: SgfI-MluI

Cloning Scheme:



ACCN: NM_018184

ORF Size: 558 bp

OTI Disclaimer: The molecular sequence of this clone aligns with the gene accession number as a point of reference only. However, individual transcript sequences of the same gene can differ through naturally occurring variations (e.g. polymorphisms), each with its own valid existence. This clone is substantially in agreement with the reference, but a complete review of all prevailing variants is recommended prior to use. [More info](#)

OTI Annotation: This clone was engineered to express the complete ORF with an expression tag. Expression varies depending on the nature of the gene.

Components: The ORF clone is ion-exchange column purified and shipped in a 2D barcoded Matrix tube containing 10ug of transfection-ready, dried plasmid DNA (reconstitute with 100 ul of water).

Reconstitution Method:

1. Centrifuge at 5,000xg for 5min.
2. Carefully open the tube and add 100ul of sterile water to dissolve the DNA.
3. Close the tube and incubate for 10 minutes at room temperature.
4. Briefly vortex the tube and then do a quick spin (less than 5000xg) to concentrate the liquid at the bottom.
5. Store the suspended plasmid at -20°C. The DNA is stable for at least one year from date of shipping when stored at -20°C.

RefSeq: [NM_018184.3](#)

RefSeq Size: 3008 bp

RefSeq ORF: 561 bp

Locus ID: 55207

UniProt ID: [Q9NVJ2](#)

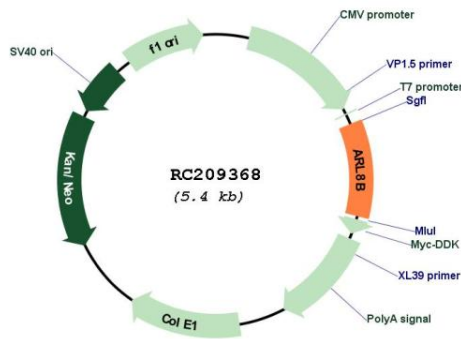
Cytogenetics: 3p26.1

Domains: RAB, SAR, ARF, arf

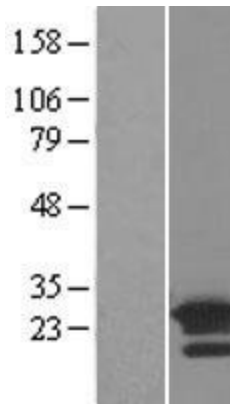
MW: 21.5 kDa

Gene Summary: Plays a role in lysosome motility (PubMed:16537643, PubMed:25898167). In neurons, mediates the anterograde axonal long-range transport of presynaptic lysosome-related vesicles required for presynaptic biogenesis and synaptic function (By similarity). May play a role in chromosome segregation (PubMed:15331635).[UniProtKB/Swiss-Prot Function]

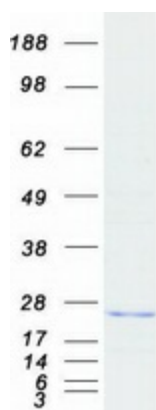
Product images:



Circular map for RC209368



Western blot validation of overexpression lysate (Cat# [LY402654]) using anti-DDK antibody (Cat# [TA50011-100]). Left: Cell lysates from untransfected HEK293T cells; Right: Cell lysates from HEK293T cells transfected with RC209368 using transfection reagent MegaTran 2.0 (Cat# [TT210002]).



Coomassie blue staining of purified ARL8B protein (Cat# [TP309368]). The protein was produced from HEK293T cells transfected with ARL8B cDNA clone (Cat# RC209368) using MegaTran 2.0 (Cat# [TT210002]).