

Product datasheet for **RC209363**

LCN1 (NM_002297) Human Tagged ORF Clone

Product data:

Product Type: Expression Plasmids
Product Name: LCN1 (NM_002297) Human Tagged ORF Clone
Tag: Myc-DDK
Symbol: LCN1
Synonyms: PMFA; TLC; TP; VEGP
Mammalian Cell Selection: Neomycin
Vector: pCMV6-Entry (PS100001)
E. coli Selection: Kanamycin (25 ug/mL)
ORF Nucleotide Sequence: >RC209363 ORF sequence
Red=Cloning site Blue=ORF Green=Tags(s)

TTTTGTAATACGACTCACTATAGGGCGGCCGGAATTCGTCGACTGGATCCGGTACCGAGGAGATCTGCC
GCC**CGGATCGCC**

ATGAAGCCCTGCTCCTGGCCGTCAGCCTTGGCCTCATTGCTGCCCTGCAGGCCACCACCTCCTGGCCT
CAGACGAGGAGATTCAGGATGTGTAGGGACGTGGTATCTGAAGCCATGACGGTGGACAGGGAGTTCCC
TGAGATGAATCTGGAATCGGTGACACCCATGACCCCTCACGACCCTGGAAGGGGCAACCTGGAAGCCAAG
GTCACCATGCTGATAAGTGGCCGGTGCCAGGAGGTGAAGGCCGCTCTGGAGAAAACCTGACGAGCCGGAA
AATACACGGCCGACGGGGCAAGCACGTGGCATACATCATCAGGTCGCACGTGAAGGACCACTACATCTT
TACTGTGAGGGCGAGCTGCACGGGAAGCCGGTCCGAGGGGTGAAGCTCGTGGGCAGAGACCCCAAGAAC
AACCTGGAAGCCTTGAGGACTTTGAGAAAGCCGAGGACCCCGGACTCAGCACGGAGAGCATCTCTCA
TCCCCAGGCAGAGCGAAACCTGCTCTCCAGGGAGCGAT

ACGCGTACGCGGCCGCTCGAGCAGAAACTCATCTCAGAAGAGGATCTGGCAGCAAATGATATCCTGGATT
ACAAGGATGACGACGATAAGGTTTAA

Protein Sequence: >RC209363 protein sequence
Red=Cloning site Green=Tags(s)

MKPLLLAVSLGLIAALQAHLLASDEEIQDVSQWYWKAMTVDFPEMNLSEVTPMTLTTLEGGNLEAK
VTMLISGRQEVKAVLEKTDPEPKYTADGGKHVAYIIRSHVKDHYIFYCEGELHGKPVGRVKLVGRDPKN
NLEALEDFEKAAGARGLSTESILIPRQSETCSPGSD

TRTRPLEQKLISEEDLAANDILDYKDDDDKV

Chromatograms: https://cdn.origene.com/chromatograms/mk6548_c07.zip



[View online »](#)

Restriction Sites: SgfI-MluI

Cloning Scheme:



ACCN: NM_002297

ORF Size: 528 bp

OTI Disclaimer: The molecular sequence of this clone aligns with the gene accession number as a point of reference only. However, individual transcript sequences of the same gene can differ through naturally occurring variations (e.g. polymorphisms), each with its own valid existence. This clone is substantially in agreement with the reference, but a complete review of all prevailing variants is recommended prior to use. [More info](#)

OTI Annotation: This clone was engineered to express the complete ORF with an expression tag. Expression varies depending on the nature of the gene.

Components: The ORF clone is ion-exchange column purified and shipped in a 2D barcoded Matrix tube containing 10ug of transfection-ready, dried plasmid DNA (reconstitute with 100 ul of water).

Reconstitution Method:

1. Centrifuge at 5,000xg for 5min.
2. Carefully open the tube and add 100ul of sterile water to dissolve the DNA.
3. Close the tube and incubate for 10 minutes at room temperature.
4. Briefly vortex the tube and then do a quick spin (less than 5000xg) to concentrate the liquid at the bottom.
5. Store the suspended plasmid at -20°C. The DNA is stable for at least one year from date of shipping when stored at -20°C.

RefSeq: [NM_002297.4](#)

RefSeq Size: 789 bp

RefSeq ORF: 531 bp

Locus ID: 3933

UniProt ID: [P31025](#)

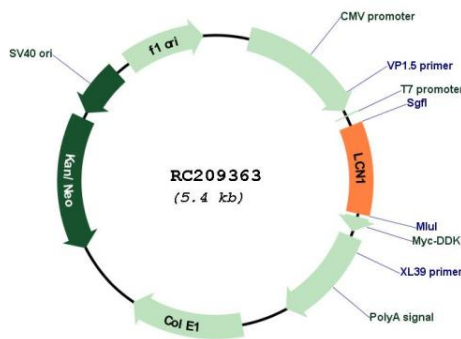
Cytogenetics: 9q34.3

Protein Families: Secreted Protein

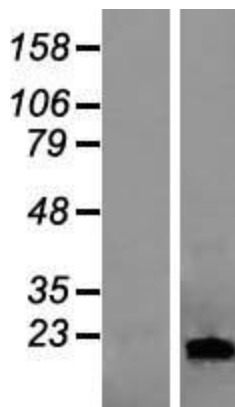
MW: 19.3 kDa

Gene Summary: This gene encodes a member of the lipocalin family of small secretory proteins. Lipocalins are extracellular transport proteins that bind to a variety of hydrophobic ligands. The encoded protein is the primary lipid binding protein in tears and is overproduced in response to multiple stimuli including infection and stress. The encoded protein may be a marker for chromosome aneuploidy as well as an autoantigen in Sjogren's syndrome. Alternatively spliced transcript variants encoding multiple isoforms have been observed for this gene, and two pseudogenes of this gene are also located on the long arm of chromosome 9. [provided by RefSeq, Nov 2011]

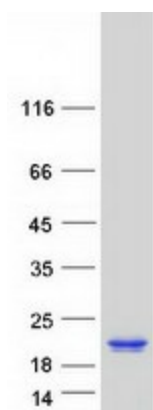
Product images:



Circular map for RC209363



Western blot validation of overexpression lysate (Cat# [LY419409]) using anti-DDK antibody (Cat# [TA50011-100]). Left: Cell lysates from untransfected HEK293T cells; Right: Cell lysates from HEK293T cells transfected with RC209363 using transfection reagent MegaTran 2.0 (Cat# [TT210002]).



Coomassie blue staining of purified LCN1 protein (Cat# [TP309363]). The protein was produced from HEK293T cells transfected with LCN1 cDNA clone (Cat# RC209363) using MegaTran 2.0 (Cat# [TT210002]).