

## Product datasheet for **RC209356**

### SCOC (NM\_032547) Human Tagged ORF Clone

#### Product data:

**Product Type:** Expression Plasmids  
**Product Name:** SCOC (NM\_032547) Human Tagged ORF Clone  
**Tag:** Myc-DDK  
**Symbol:** SCOC  
**Synonyms:** HRIHFB2072; SCOCO; UNC-69  
**Mammalian Cell Selection:** Neomycin  
**Vector:** pCMV6-Entry (PS100001)  
**E. coli Selection:** Kanamycin (25 ug/mL)  
**ORF Nucleotide Sequence:** >RC209356 ORF sequence  
**Red=Cloning site Blue=ORF Green=Tags(s)**

TTTTGTAATACGACTCACTATAGGGCGGCCGGAATTCGTCGACTGGATCCGGTACCGAGGAGATCTGCC  
GCC**CGATCGCC**

ATGGACGGGTCCAGGAAAGAGGAGGAGGAAGACAGCACATTCACCAACATTTCTCTTGCAGATGACATAG  
ACCATTCTCAAGAATTTGTATCCAAGGCCAAAAGTTGTTACCCAAGATGATGAATGCTGACATGGA  
TGTTGATGCTGAAAATCAAGTGGAACTGGAGGAAAAACAAGACTTATTAATCAAGTGTGGAACCCAA  
CACACACTGAAGATCTCTCTGCAAGAGTAGATGCAGTTAAGGAAGAAAATCTGAAGCTAAAATCAGAAA  
ACCAAGTTCTTGGACAATATATAGAAAATCTCATGTCAGCTTCTAGTGTTTTTCAAACAACACTGACACAAA  
AAGCAAAAGAAAG

**ACGCGT**ACGCGGCCGCTCGAGCAGAAACTCATCTCAGAAGAGGATCTGGCAGCAAATGATATCCTGGATT  
ACAAGGATGACGACGATAAGGTTTAA

**Protein Sequence:** >RC209356 protein sequence  
**Red=Cloning site Green=Tags(s)**  
MDGSRKEEEEDSTFTNISLADDIDHSSRILYPRPKSLLPKMMNADMVDAENQVELEEKTRLINQVLELQ  
HTLEDLSARVDVAVKEENLKLKSENQVLGQYIENLMSASSVFQTTDTKSKRK

**TR**TRPLEQKLISEEDLAANDILDYKDDDDKV

**Chromatograms:** [https://cdn.origene.com/chromatograms/mk6035\\_b12.zip](https://cdn.origene.com/chromatograms/mk6035_b12.zip)

**Restriction Sites:** SgfI-MluI



[View online »](#)

**Cloning Scheme:**


**ACCN:** NM\_032547

**ORF Size:** 363 bp

**OTI Disclaimer:** The molecular sequence of this clone aligns with the gene accession number as a point of reference only. However, individual transcript sequences of the same gene can differ through naturally occurring variations (e.g. polymorphisms), each with its own valid existence. This clone is substantially in agreement with the reference, but a complete review of all prevailing variants is recommended prior to use. [More info](#)

**OTI Annotation:** This clone was engineered to express the complete ORF with an expression tag. Expression varies depending on the nature of the gene.

**Components:** The ORF clone is ion-exchange column purified and shipped in a 2D barcoded Matrix tube containing 10ug of transfection-ready, dried plasmid DNA (reconstitute with 100 ul of water).

- Reconstitution Method:**
1. Centrifuge at 5,000xg for 5min.
  2. Carefully open the tube and add 100ul of sterile water to dissolve the DNA.
  3. Close the tube and incubate for 10 minutes at room temperature.
  4. Briefly vortex the tube and then do a quick spin (less than 5000xg) to concentrate the liquid at the bottom.
  5. Store the suspended plasmid at -20°C. The DNA is stable for at least one year from date of shipping when stored at -20°C.

**RefSeq:** [NM\\_032547.3](#)

**RefSeq Size:** 1974 bp

**RefSeq ORF:** 369 bp

**Locus ID:** 60592

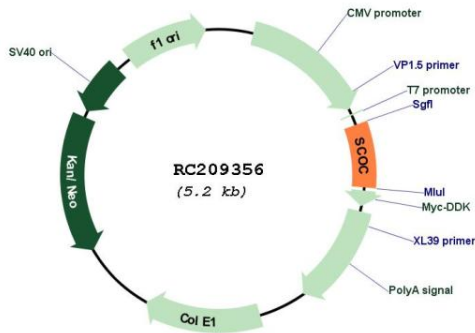
**UniProt ID:** [Q9UIL1](#)

Cytogenetics: 4q31.1

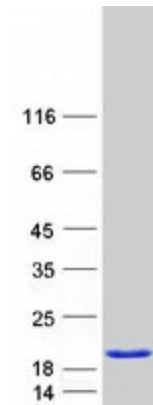
MW: 13.9 kDa

Gene Summary: This gene encodes a short coiled-coiled domain-containing protein that localizes to the Golgi apparatus. The encoded protein interacts with ADP-ribosylation factor-like proteins. Pseudogenes of this gene are found on chromosomes 1 and 14. Alternative splicing results in multiple transcript variants. [provided by RefSeq, Apr 2009]

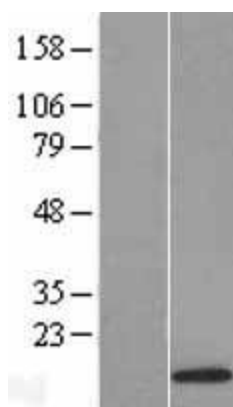
**Product images:**



Circular map for RC209356



Coomassie blue staining of purified SCOC protein (Cat# [TP309356]). The protein was produced from HEK293T cells transfected with SCOC cDNA clone (Cat# RC209356) using MegaTran 2.0 (Cat# [TT210002]).



Western blot validation of overexpression lysate (Cat# [LY431758]) using anti-DDK antibody (Cat# [TA50011-100]). Left: Cell lysates from untransfected HEK293T cells; Right: Cell lysates from HEK293T cells transfected with [RC228730] using transfection reagent MegaTran 2.0 (Cat# [TT210002]).