

## Product datasheet for RC209355

### LACRT (NM\_033277) Human Tagged ORF Clone

#### Product data:

Product Type: Expression Plasmids  
 Product Name: LACRT (NM\_033277) Human Tagged ORF Clone  
 Tag: Myc-DDK  
 Symbol: LACRT  
 Mammalian Cell Selection: Neomycin  
 Vector: pCMV6-Entry (PS100001)  
 E. coli Selection: Kanamycin (25 ug/mL)  
 ORF Nucleotide Sequence: >RC209355 ORF sequence  
 Red=Cloning site Blue=ORF Green=Tags(s)

TTTTGTAATACGACTCACTATAGGGCGGCCGGAATTCGTCGACTGGATCCGGTACCGAGGAGATCTGCC  
 GCC**CGATCGCC**

ATGAAATTTACCACTCTCCTCTTCTTGGCAGCTGTAGCAGGGCCCTGGTCTATGCTGAAGATGCCTCCT  
 CTGACTCGACGGGTGCTGATCCTGCCAGGAAGCTGGGACCTCTAAGCCTAATGAAGAGATCTCAGGTCC  
 AGCAGAACCAGCTTCACCCCCAGAGACAACCACAACAGCCAGGAGACTCGCGGCAGCAGTTCAGGGG  
 ACAGCCAAGGTCACCTCAAGCAGGCAGGAATAAACCCCTGAAATCCATAGTGGAGAAAAGTATCTTAC  
 TAACAGAACAAAGCCCTTGCAAAAGCAGGAAAAGGAATGCACGGAGCGTGCCAGGTGAAAACAATTCAT  
 CGAAAATGGAAGTGAATTTGCACAAAAATTACTGAAGAAATTCAGTCTATTAAAACCATGGCA

**ACGCGT**ACGCGGCCGCTCGAGCAGAACTCATCTCAGAAGAGGATCTGGCAGCAAATGATATCCTGGATT  
 ACAAGGATGACGACGATAAGGTTTAA

Protein Sequence: >RC209355 protein sequence  
 Red=Cloning site Green=Tags(s)

MKFTLLLFLAAVAGALVYAEDASSDSTGADPAQEAGTSKPNEEISGPAEPASPPETTTTAQETSAAAVQG  
 TAKVTSSRQELNPLKSIVEKSILLTEQALAKAGKGMHGGVPGGKQFIENGSEFAQKLLKKFSLKLPWA

**TR**TRPLEQKLISEEDLAANDILDYKDDDDKV

Chromatograms: [https://cdn.origene.com/chromatograms/mk6548\\_d10.zip](https://cdn.origene.com/chromatograms/mk6548_d10.zip)

Restriction Sites: Sgfl-MluI



[View online »](#)

**Cloning Scheme:**


**ACCN:** NM\_033277

**ORF Size:** 414 bp

**OTI Disclaimer:** The molecular sequence of this clone aligns with the gene accession number as a point of reference only. However, individual transcript sequences of the same gene can differ through naturally occurring variations (e.g. polymorphisms), each with its own valid existence. This clone is substantially in agreement with the reference, but a complete review of all prevailing variants is recommended prior to use. [More info](#)

**OTI Annotation:** This clone was engineered to express the complete ORF with an expression tag. Expression varies depending on the nature of the gene.

**Components:** The ORF clone is ion-exchange column purified and shipped in a 2D barcoded Matrix tube containing 10ug of transfection-ready, dried plasmid DNA (reconstitute with 100 ul of water).

- Reconstitution Method:**
1. Centrifuge at 5,000xg for 5min.
  2. Carefully open the tube and add 100ul of sterile water to dissolve the DNA.
  3. Close the tube and incubate for 10 minutes at room temperature.
  4. Briefly vortex the tube and then do a quick spin (less than 5000xg) to concentrate the liquid at the bottom.
  5. Store the suspended plasmid at -20°C. The DNA is stable for at least one year from date of shipping when stored at -20°C.

**RefSeq:** [NM\\_033277.2](#)

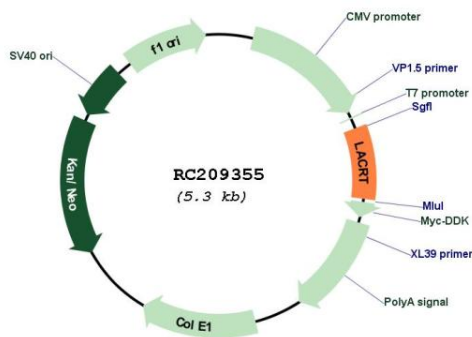
**RefSeq Size:** 508 bp

**RefSeq ORF:** 417 bp

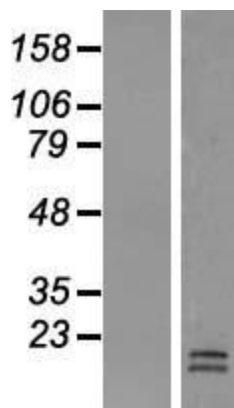
**Locus ID:** 90070

UniProt ID: [Q9GZZ8](#)  
 Cytogenetics: 12q13.2  
 Protein Families: Secreted Protein  
 MW: 14.2 kDa  
 Gene Summary: The protein encoded by this gene is highly expressed in the lacrimal glands and localized primarily to secretory granules and secretory fluid. It augments lacrimal acinar cell secretion, promotes ductal cell proliferation, and stimulates signaling through tyrosine phosphorylation and release of calcium. [provided by RefSeq, Jul 2008]

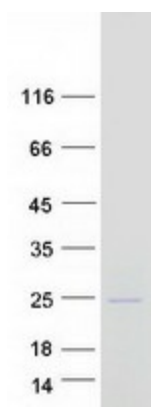
**Product images:**



Circular map for RC209355



Western blot validation of overexpression lysate (Cat# [LY409624]) using anti-DDK antibody (Cat# [TA50011-100]). Left: Cell lysates from untransfected HEK293T cells; Right: Cell lysates from HEK293T cells transfected with RC209355 using transfection reagent MegaTran 2.0 (Cat# [TT210002]).



Coomassie blue staining of purified LACRT protein (Cat# [TP309355]). The protein was produced from HEK293T cells transfected with LACRT cDNA clone (Cat# RC209355) using MegaTran 2.0 (Cat# [TT210002]).