

## Product datasheet for **RC209348**

### Cystatin D (CST5) (NM\_001900) Human Tagged ORF Clone

#### Product data:

**Product Type:** Expression Plasmids  
**Product Name:** Cystatin D (CST5) (NM\_001900) Human Tagged ORF Clone  
**Tag:** Myc-DDK  
**Symbol:** Cystatin D  
**Mammalian Cell Selection:** Neomycin  
**Vector:** pCMV6-Entry (PS100001)  
**E. coli Selection:** Kanamycin (25 ug/mL)  
**ORF Nucleotide Sequence:** >RC209348 ORF sequence  
 Red=Cloning site Blue=ORF Green=Tags(s)

TTTTGTAATACGACTCACTATAGGGCGGCCGGAATTCGTCGACTGGATCCGGTACCGAGGAGATCTGCC  
 GCC**CGGATCGCC**

ATGATGTGGCCCATGCACCCCCACTGCTGCTGCTGACTGCCTTGATGGTGGCCGTGGCCGGGAGTGCCT  
 CGGCCCAATCTAGGACCTTGGCAGGTGGCATCCATGCCACAGACCTCAATGACAAGAGTGTGCAGTGTGC  
 CCTGGACTTTGCCATCAGCGAGTACAACAAGGTCATTAATAAGGATGAGTACTACAGCCGCCCTCTGCAG  
 GTGATGGCTGCCTACCAGCAGATCGTGGGTGGGTGAAGTACTACTTCAATGTGAAGTTCGGTCGAACCA  
 CATGCACCAAGTCCCAGCCCACTTGGACAAGTGTCCCTTCAATGACCAGCCAAAAGTGAAGAGGAAGA  
 GTTCTGCTCTTTCCAGATCAATGAAGTTCCTGGGAGGATAAAATTTCCATTCTGAAGTACAAGTGCCGG  
 AAAGTC

**ACGCGT**ACGCGGCCGCTCGAGCAGAACTCATCTCAGAAGAGGATCTGGCAGCAAATGATATCCTGGATT  
 ACAAGGATGACGACGATAAGGTTTAA

**Protein Sequence:** >RC209348 protein sequence  
 Red=Cloning site Green=Tags(s)

MMWPMHTPLLLL TALMVAVAGSASQSR TLAGGIHATDLNDKSVQCALDFAISEYNKVINKDEYYSRPLQ  
 VMAAYQQIVGGVNYFNVKFGRTTCTKSQPNLDNCPFNQPKLKEEFCSFQINEVPWEDIKILNYKCR  
 KV

**TR**TRPLEQKLISEEDLAANDILDYKDDDDKV

**Chromatograms:** [https://cdn.origene.com/chromatograms/mk6035\\_a11.zip](https://cdn.origene.com/chromatograms/mk6035_a11.zip)

**Restriction Sites:** SgfI-MluI



[View online »](#)

## Cloning Scheme:



ACCN: NM\_001900

ORF Size: 426 bp

OTI Disclaimer: The molecular sequence of this clone aligns with the gene accession number as a point of reference only. However, individual transcript sequences of the same gene can differ through naturally occurring variations (e.g. polymorphisms), each with its own valid existence. This clone is substantially in agreement with the reference, but a complete review of all prevailing variants is recommended prior to use. [More info](#)

OTI Annotation: This clone was engineered to express the complete ORF with an expression tag. Expression varies depending on the nature of the gene.

Components: The ORF clone is ion-exchange column purified and shipped in a 2D barcoded Matrix tube containing 10ug of transfection-ready, dried plasmid DNA (reconstitute with 100 ul of water).

Reconstitution Method:

1. Centrifuge at 5,000xg for 5min.
2. Carefully open the tube and add 100ul of sterile water to dissolve the DNA.
3. Close the tube and incubate for 10 minutes at room temperature.
4. Briefly vortex the tube and then do a quick spin (less than 5000xg) to concentrate the liquid at the bottom.
5. Store the suspended plasmid at -20°C. The DNA is stable for at least one year from date of shipping when stored at -20°C.

Note: Plasmids are not sterile. For experiments where strict sterility is required, filtration with 0.22um filter is required.

RefSeq: [NM\\_001900.5](#)

RefSeq Size: 790 bp

RefSeq ORF: 429 bp

Locus ID: 1473

UniProt ID: [P28325](#)

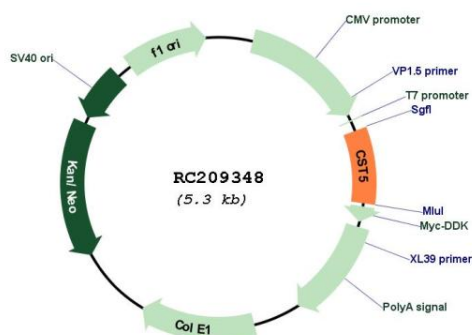
Cytogenetics: 20p11.21

Domains: CY

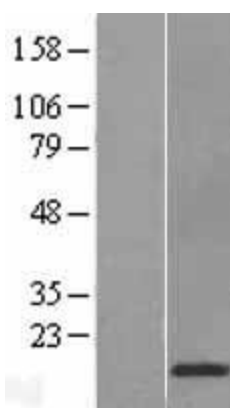
MW: 16.1 kDa

**Gene Summary:** The cystatin superfamily encompasses proteins that contain multiple cystatin-like sequences. Some of the members are active cysteine protease inhibitors, while others have lost or perhaps never acquired this inhibitory activity. There are three inhibitory families in the superfamily, including the type 1 cystatins (stefins), type 2 cystatins and the kininogens. The type 2 cystatin proteins are a class of cysteine proteinase inhibitors found in a variety of human fluids and secretions. The cystatin locus on chromosome 20 contains the majority of the type 2 cystatin genes and pseudogenes. This gene is located in the cystatin locus and encodes a protein found in saliva and tears. The encoded protein may play a protective role against proteinases present in the oral cavity. [provided by RefSeq, Jul 2008]

## Product images:



Circular map for RC209348



Western blot validation of overexpression lysate (Cat# [LY419667]) using anti-DDK antibody (Cat# [TA50011-100]). Left: Cell lysates from untransfected HEK293T cells; Right: Cell lysates from HEK293T cells transfected with RC209348 using transfection reagent MegaTran 2.0 (Cat# [TT210002]).